

Hamptons

INTERNATIONAL



440 Wyola St, Pittsburgh, PA 15211

3 1/2 3 1/2

£390,000

(\$525,000)

Property details



Key features

- **Sewer: Public**
- **Cooling: Central A/C**
- **Water: City Water**

Attributes

 **Garage**

440 Wyola St, Pittsburgh, PA 15211

3  3 

£390,000
(\$525,000)

Description

This fabulous new-construction home at 440 Wyola in Mount Washington is ready for its very first owners, offering modern design, thoughtful layout, and an unbeatable location near all the neighborhood's top attractions. Enter through the lower level to a long hallway with ceramic tile flooring, a utility room with a Carrier electric heat pump and water tank. Across the hall is access to a two-car garage (single door) with a 200-amp breaker panel and poured concrete foundation. The first floor also includes a nicely sized game room, bedroom (no window) or office with carpet and a generous closet. Head upstairs to the main living level where soaring ceilings-approximately 10 feet-create an airy, spacious feel. Luxury vinyl plank flooring flows throughout the open-concept living room, dining room, and kitchen, accented by recessed lighting. The kitchen features granite countertops, Forevermark wood cabinetry with soft-close doors, Anderson windows, and GE/Whirlpool stainless appliances including electric cooktop oven with hood vent, refrigerator, dishwasher, and microwave on a built-in shelf. A convenient powder room is located on this level, and sliding doors off the kitchen lead to a side patio with a newly excavated yard area with retaining wall and fresh pine trees. Upstairs, the LVP flooring continues and you'll find a large laundry room with electric hookups, plus a full bath with ceramic tile and neutral gray tones. Three bedrooms are located on this level, including a primary suite at the back of the home and two additional bedrooms in the front. The Primary bath offers a spacious shower with glass door, private toilet area, shelving niche potential, and modern finishes. Large stationary windows in the bedrooms as well as fully functioning windows provide abundant natural light, complemented by overhead lighting and hallway recessed lights. Exterior features include vinyl siding with stone facade. Located on a quiet dead-end street, this property presents an excellent Airbnb opportunity or primary residence, just minutes from Mount Washington restaurants, the incline, downtown Pittsburgh, and the South Side.































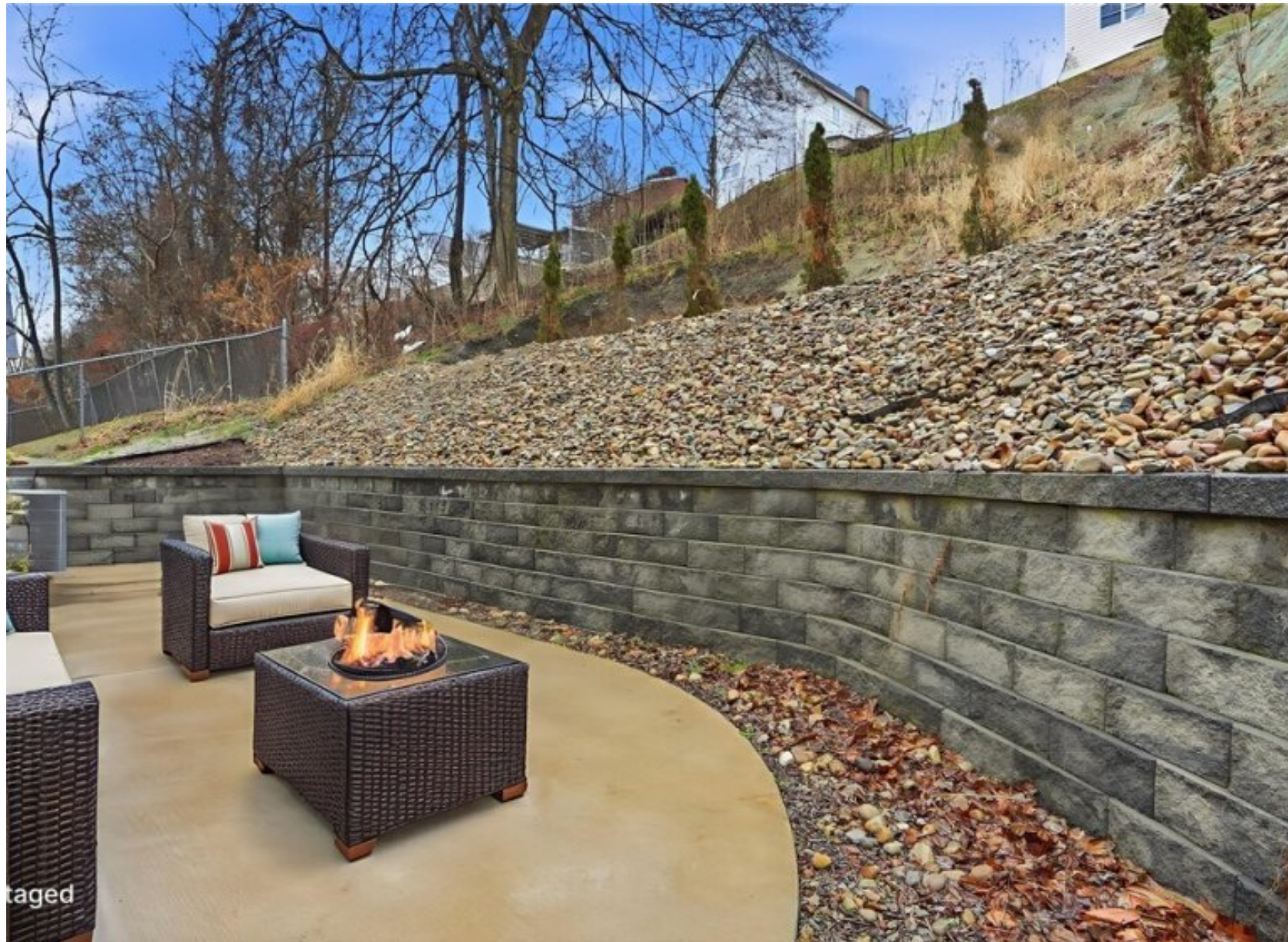


taged

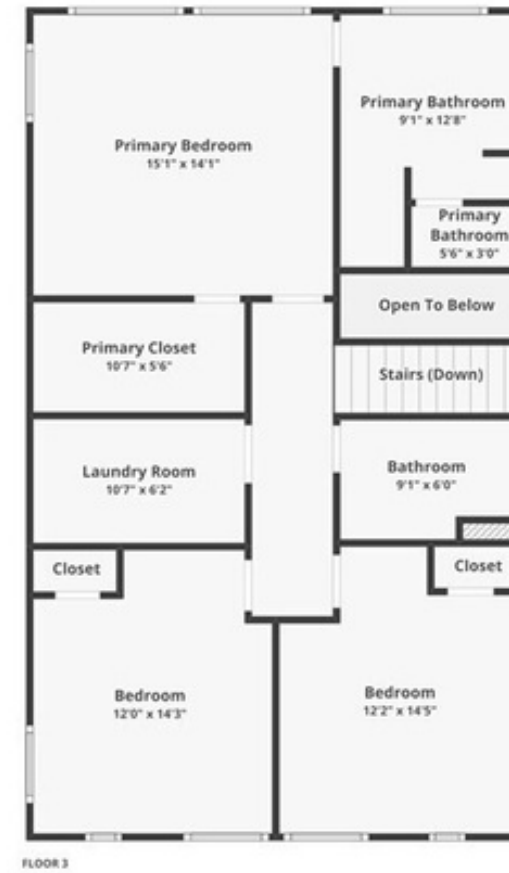
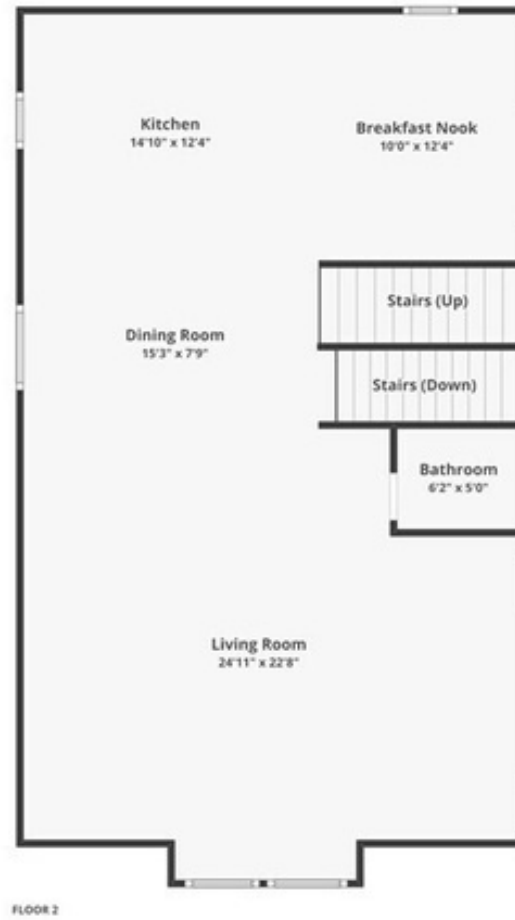
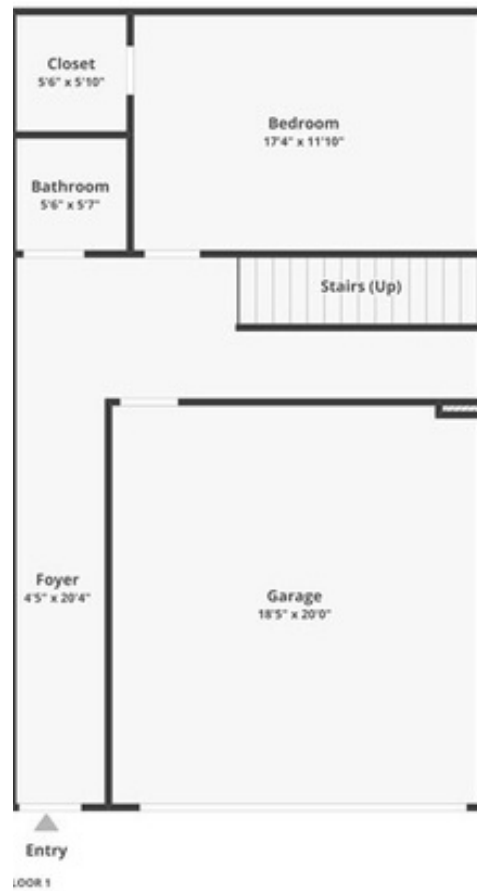




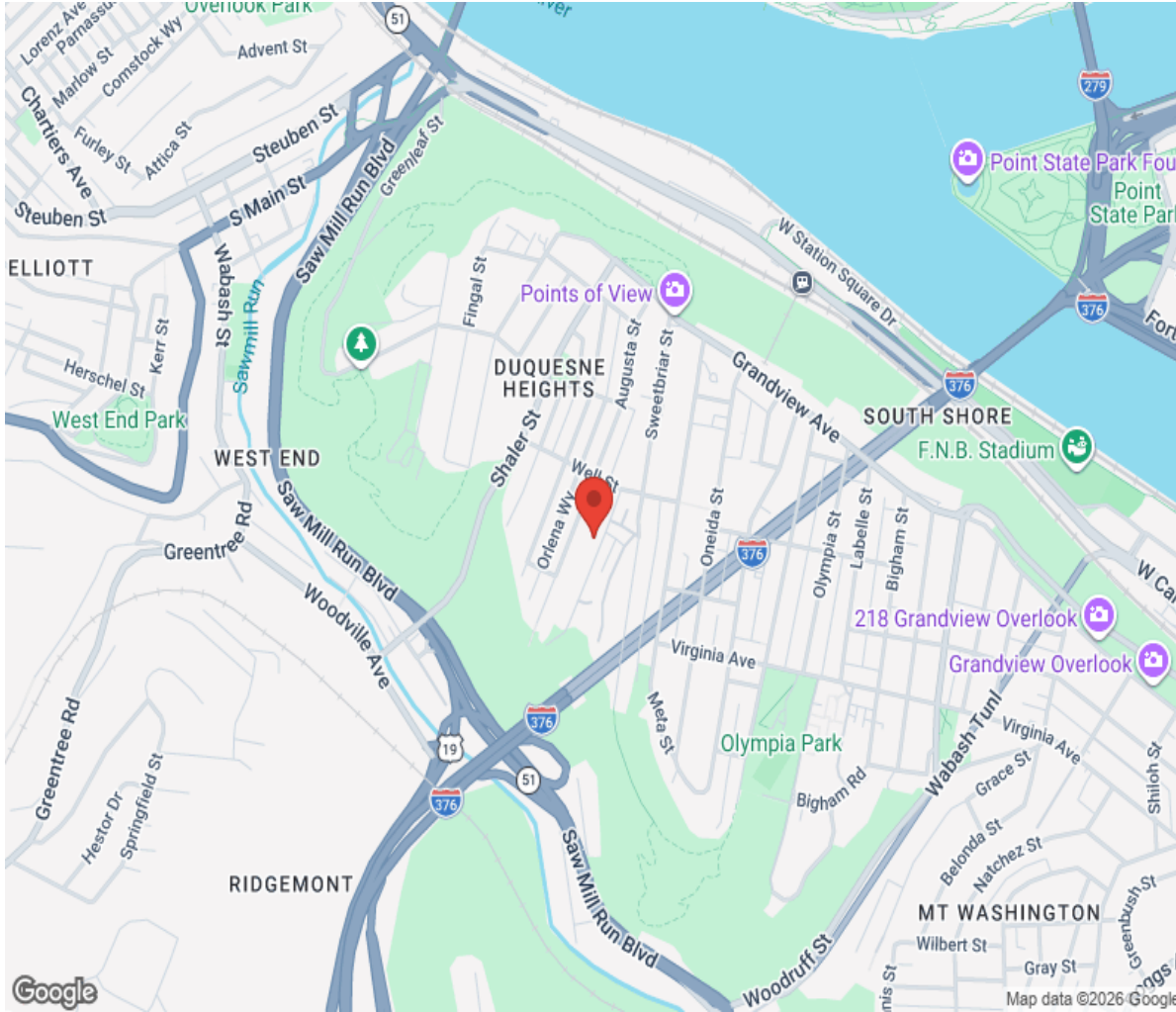








Location



Hamptons

INTERNATIONAL

+44 (0)20 8618 4551

international@hamptons.co.uk

www.hamptons-international.com