

# Hamptons

INTERNATIONAL



**2271 Shoreline Dr, Flower Mound, TX 75022**

4 🏠 3 🏠

**£620,000**

**(\$825,000)**

## Property details



### Key features

- **Garage Count: 2 Car Garage**
- **Fireplace Count: 1 Fireplace**
- **Cooling: Central A/C**
- **Sewer: Septic**
- **Water: City Water**

### Attributes

-  **Garage**
-  **Private parking**

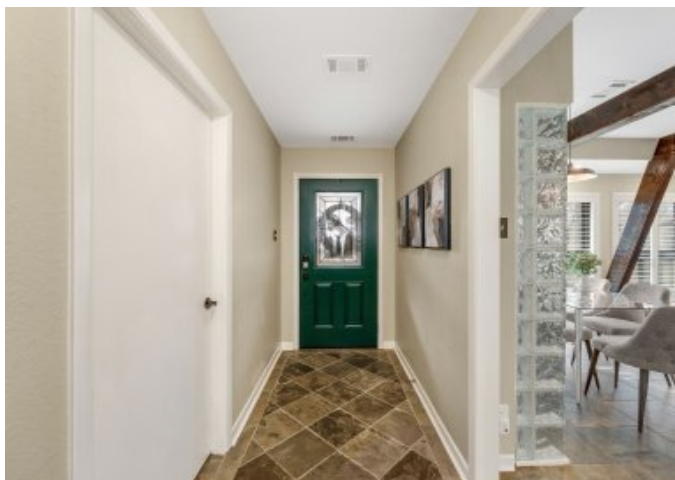
**2271 Shoreline Dr, Flower Mound, TX 75022**

4  3 

**£620,000**  
**(\$825,000)**

## Description

Spectacular home on a beautiful wooded lot overlooking Corps of Engineers property, offering rare peace, privacy, and a true connection to nature. With no neighbors on one side or behind, the setting feels secluded-yet remains close to everyday conveniences in Flower Mound, a community that consistently ranks among the nation's top places to live for quality of life, safety, schools, and access to outdoor recreation. Tucked at the end of a quiet dead-end street, this custom-built home (third owner) offers trail access just steps from the back gate and is minutes from Twin Coves Park. One of the sellers' favorite aspects is how effortlessly the home connects to the outdoors, with daily sightings of birds and deer creating a peaceful, ever-changing backdrop. The home has been thoughtfully cared for and features new Pella windows, a metal roof, plantation shutters, quartz and granite surfaces, custom closets, and a well-designed kitchen with luxury appliances and a farmhouse sink. Living areas are warm and inviting with an electric fireplace, built-in speakers, and smart features that convey. Designed to live large, the property offers multiple patios, easy-care turf, a spacious rooftop deck, a private hot tub, and a glass-surrounded, climate-controlled sunroom that feels immersed in nature-an ideal space to enjoy the views year-round (the seller's favorite spot). Additional highlights include abundant storage, an oversized garage, space for RV and boat parking, a close-knit neighborhood, and no HOA. Peaceful and private, yet close to Flower Mound schools, shopping, dining, and a short commute to DFW International Airport, this home offers a rare balance of retreat and accessibility. For expanded seller insights and full details, refer to the property blog and prior listing materials.























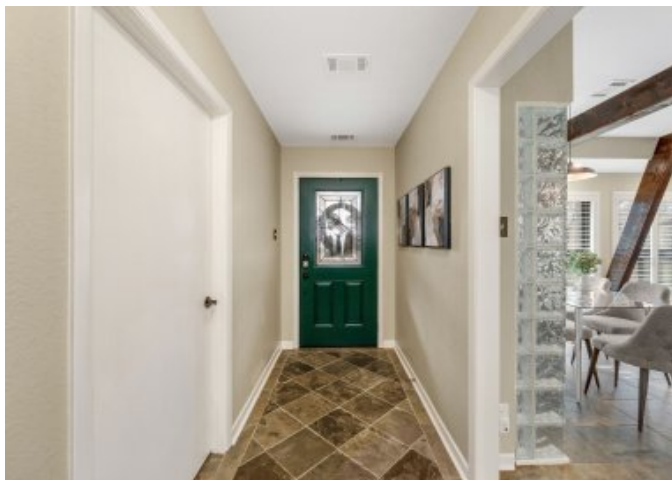














# Location

---



**Hamptons**

INTERNATIONAL

**+44 (0)20 8618 4551**

**[international@hamptons.co.uk](mailto:international@hamptons.co.uk)**

**[www.hamptons-international.com](http://www.hamptons-international.com)**