

Hamptons

INTERNATIONAL



608 Amarth Ln, Cranberry Township, PA 16066

3 1/2 3 1/2

£320,000

(\$429,900)

Property details



Key features

- **Sewer: Public**
- **Pool Description: Pool**
- **Cooling: Central A/C**
- **Heating Type: Forced Air**
- **Water: City Water**

Attributes

 **Swimming pool**

608 Amarth Ln, Cranberry Township, PA 16066

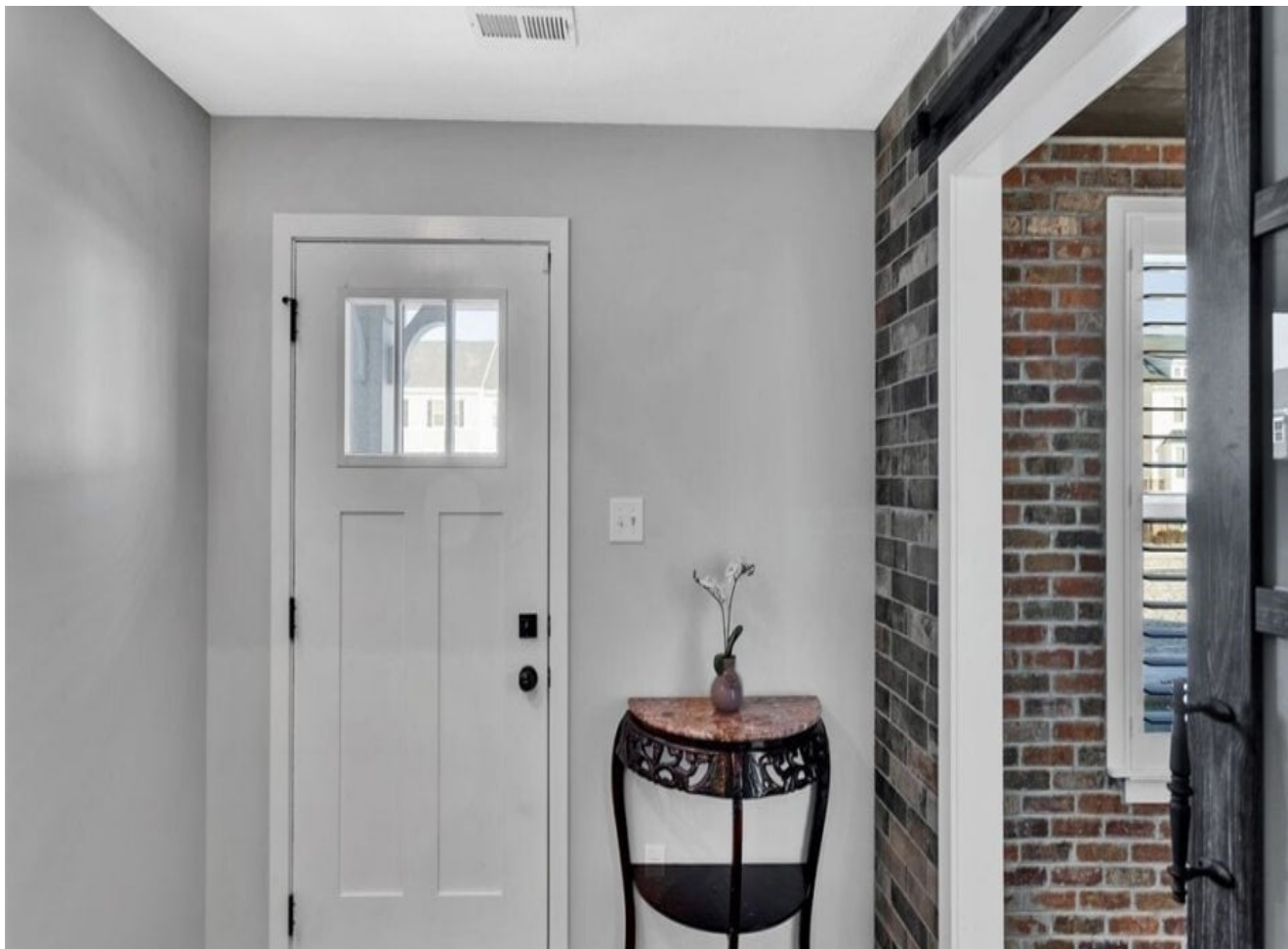
£320,000

(\$429,900)

3 🏠 3 🏠

Description

This end unit townhome is NOT like the others, featuring amazing interior upgrades. Welcome to this home where elegance meets convenience, perfect for those desiring luxury minus the extensive upkeep. This exquisite end-unit townhome in the Park Place community offers a unique blend of sophistication and practicality. A stone and sided exterior with a charming covered entry sets a welcoming stage. Upon entering, the expansive mudroom offers ideal storage, leading to a thoughtfully designed office space/doubling as an exercise room or additional guest room with Murphy bed and is accessed by custom pocket doors, has ample natural light provided double window, plantation shutters and unique storage solutions. A striking wood ceiling adds warmth, making it a haven for productivity or relaxation. On the main floor, enjoy a sunlit open-concept layout featuring gourmet kitchen, off white upgraded custom cabinetry and elegant wood like flooring. This chef's kitchen boasts luxurious leatherback granite countertops, contrasting island/breakfast bar, high-end stainless appliances, including new refrigerator and dishwasher, subway tile backsplash, and premium Kohler faucet. Sophisticated wood accent wall and custom barn door to pantry and door to composite deck. This kitchen is open to a great room boasting tv mount on wood accent wall and a convenient powder room with industrial look shelves. Attention to detail is evident with a 4-foot extension enhancing space use. Take the wood steps up to find 3 bedrooms and 2 baths. The primary suite is a true retreat and includes a large walk-in closet and Barn door leading to a beautifully appointed bath boasting glass and ceramic shower and double basin. Two other bedrooms offer fans and share a hall bathroom. Beyond the interior, this townhome is near picturesque Graham Park and offers an onsite pool and community center, sidewalks and gazebos - a park-like setting perfect for leisure and recreation. This Craftsman-style home also offers upgraded lighting, lots of fresh paint and is ready to move in. Contact GEORGIE SMIGEL at 412-638-6258 or georgie.smigel@pittsburghmoves.com for more information or to schedule an appointment today!









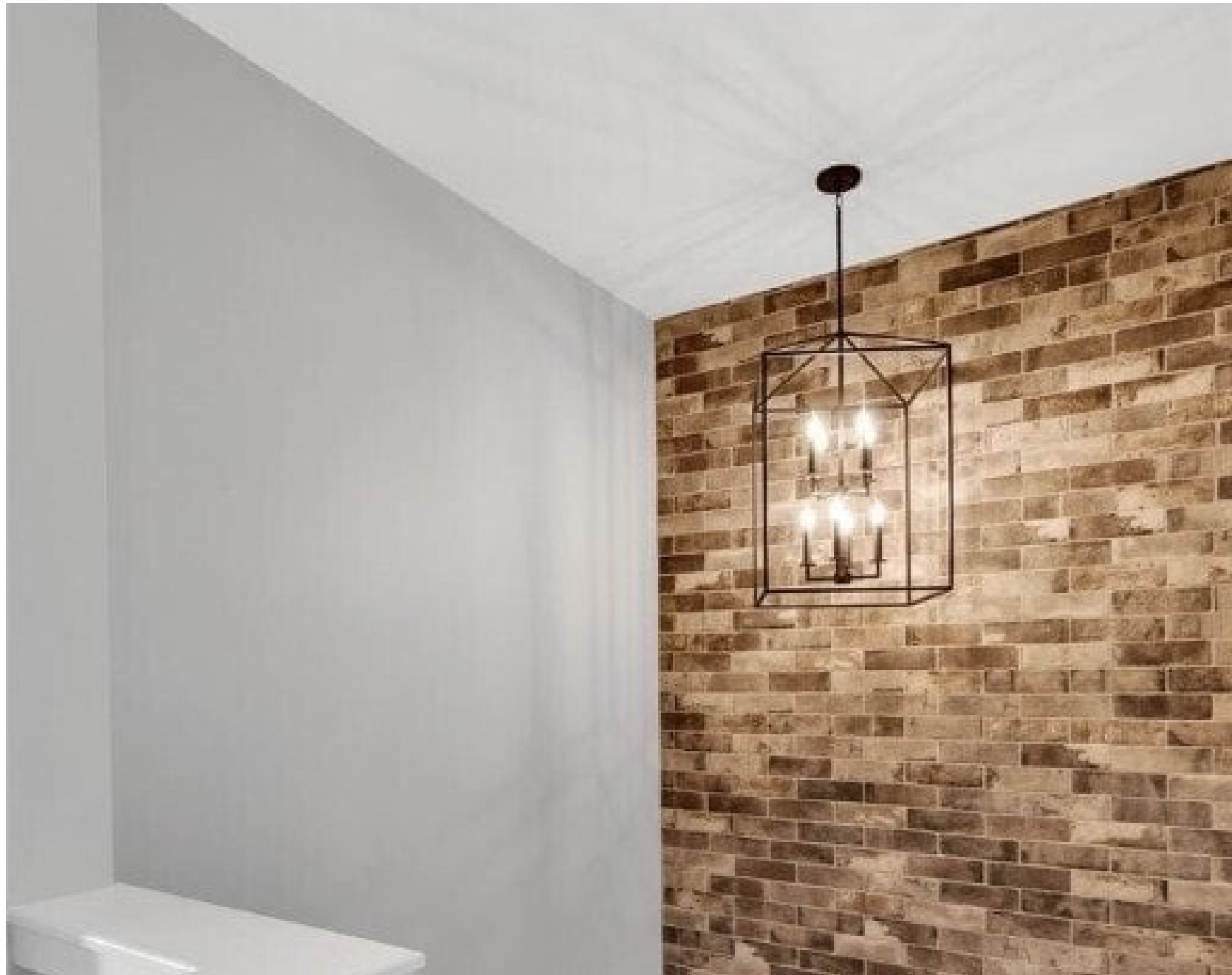


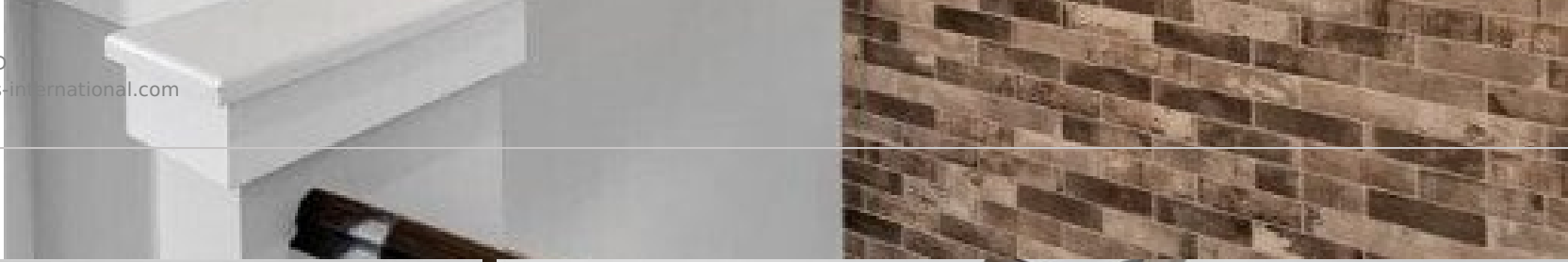












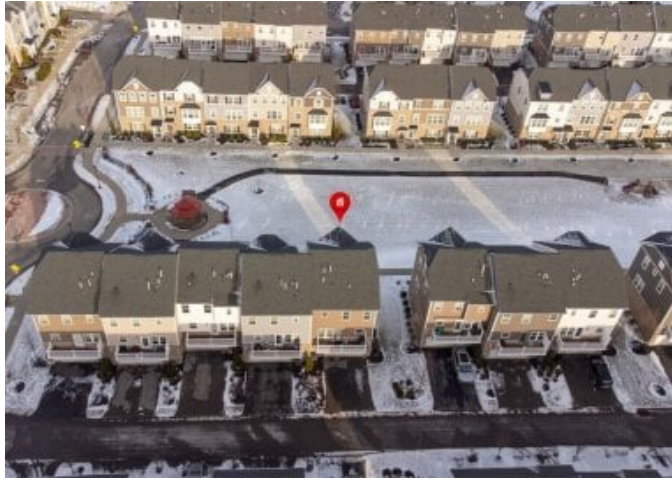






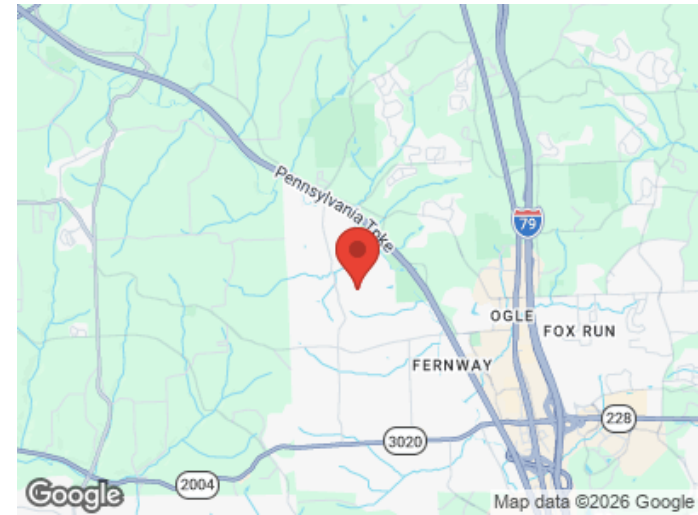
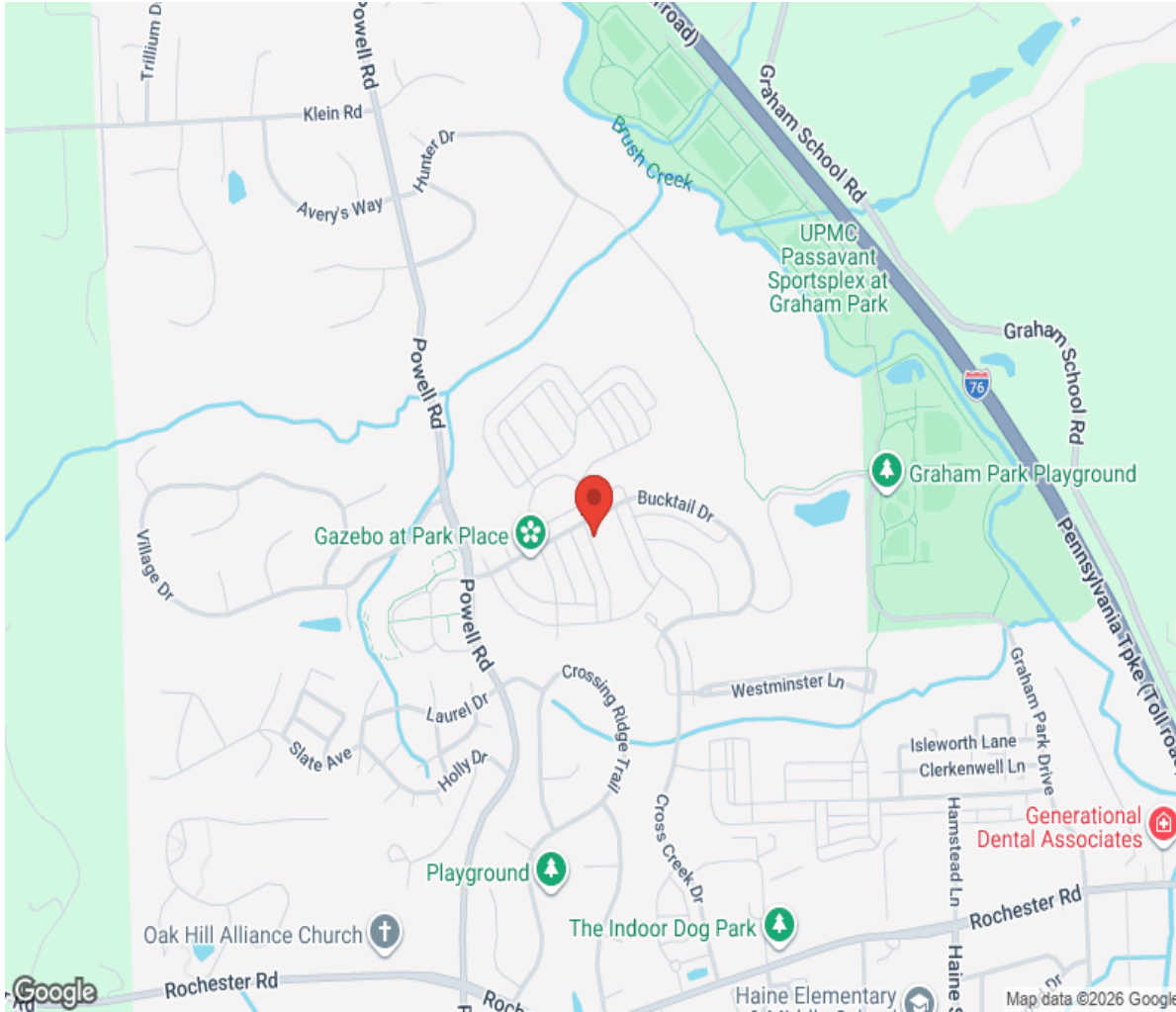








Location



Hamptons

INTERNATIONAL

+44 (0)20 8618 4551

international@hamptons.co.uk

www.hamptons-international.com