

Hamptons

INTERNATIONAL



565 Holly Ave, Saint Paul, MN 55102

6 1/2 3 1/2

£560,000

(\$750,000)

Property details



Key features

- **Heating - Fuel Type: Gas**
- **Cooling: No A/C**
- **Sewer: Public**
- **Garage Count: 5 + Car Garage**
- **Fireplace Count: 4+ Fireplaces**
- **Special Program: Global Luxury**
- **Water: City Water**

Attributes

 **Garden**

565 Holly Ave, Saint Paul, MN 55102

6 🏠 3 🚗

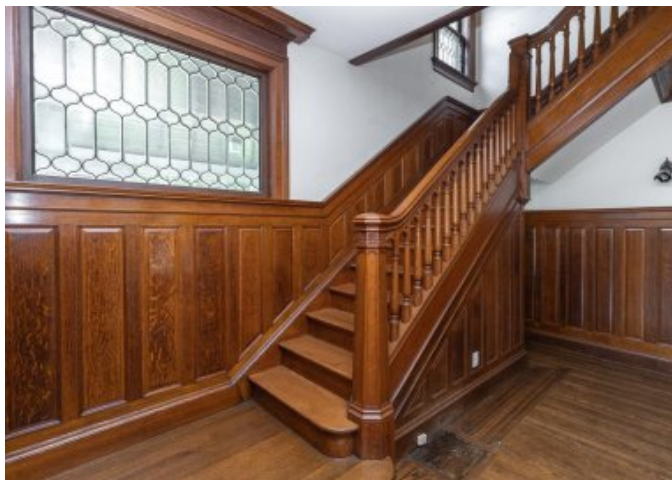
£560,000
(\$750,000)

Description

Spanning more than 4,200 square feet, this home showcases exquisite period details throughout-hand-crafted woodwork, hardwood floors, and a grand staircase that sets the tone for its timeless elegance. The expansive floor plan offers six bedrooms and four bathrooms, providing generous space for family and guests alike. The main level is anchored by stately living and dining rooms alongside a welcoming kitchen-ideal for entertaining or everyday living. The third floor hosts a private two-bedroom suite, offering excellent potential for multigenerational living or income opportunities. A rare five-stall carriage house, complete with an unfinished second floor, adds even more possibilities. Set on an oversized lot, the grounds invite you to create beautiful gardens, outdoor entertaining spaces, or a private retreat. With its rich history, unmatched craftsmanship, and endless potential, this treasure is a rare opportunity to own and restore a true piece of Saint Paul's heritage. Price reflects work needed.

















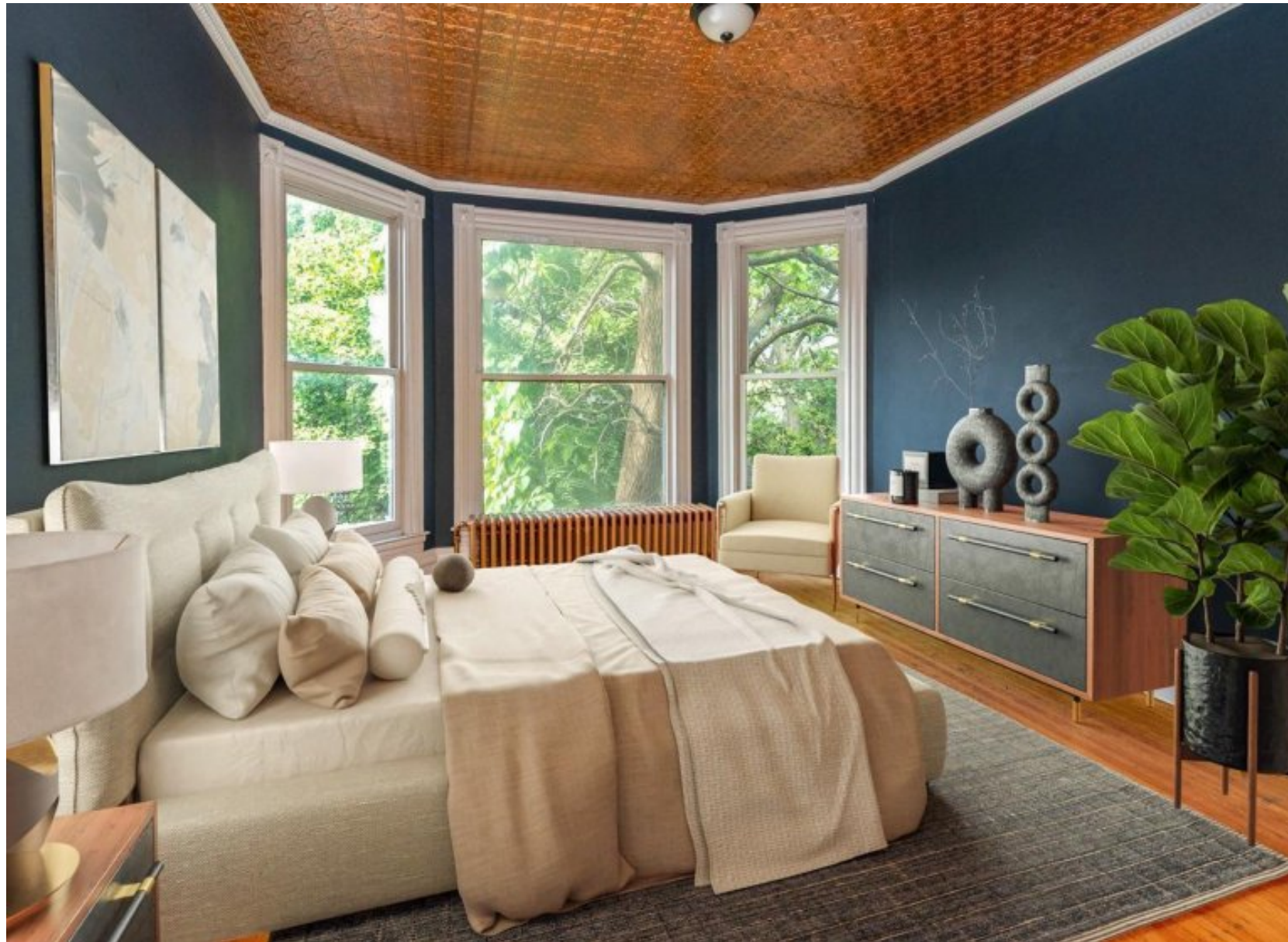




























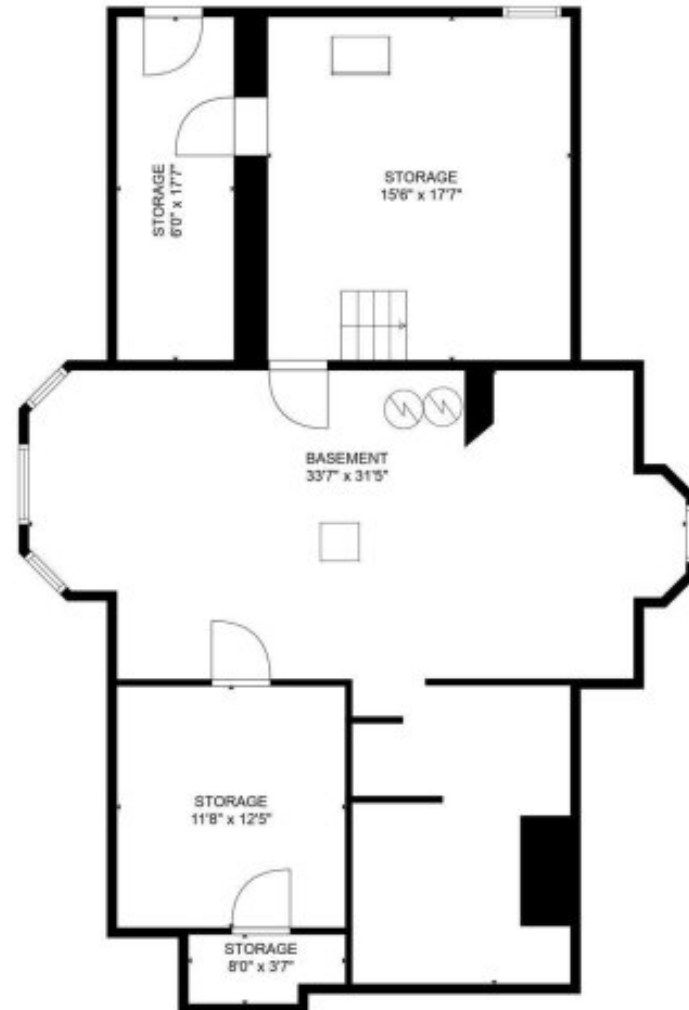










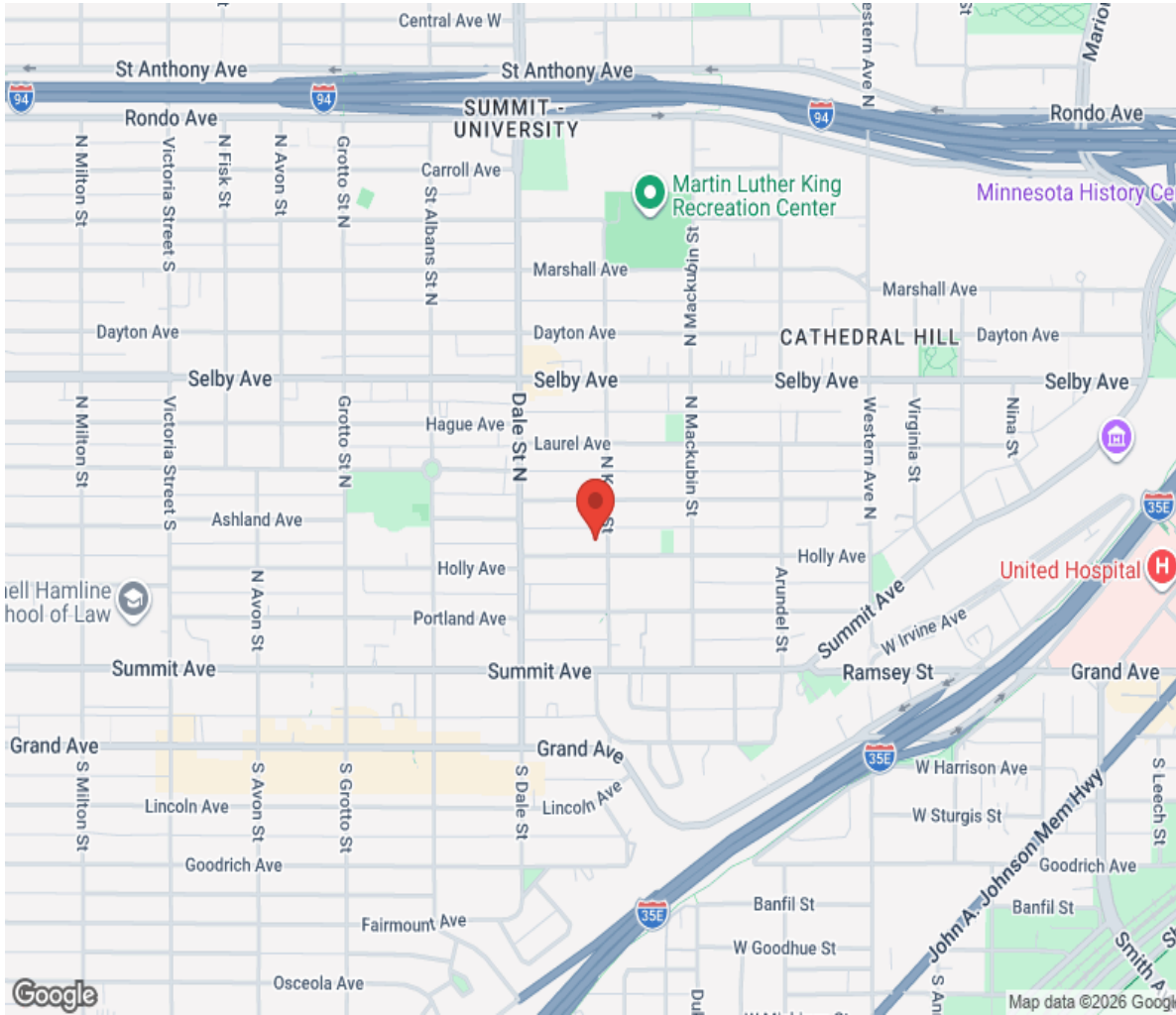


TOTAL: 4805 sq. ft

BELOW GROUND: 675 sq. ft, FLOOR 2: 1447 sq. ft, FLOOR 3: 1343 sq. ft, FLOOR 4: 1340 sq. ft
EXCLUDED AREAS: STORAGE: 581 sq. ft, SCREENED PORCH: 467 sq. ft, PORCH: 88 sq. ft,
FIREPLACE: 12 sq. ft, OPEN TO BELOW: 17 sq. ft, DECK: 39 sq. ft,
WALLS: 377 sq. ft

SIZES AND DIMENSIONS ARE APPROXIMATE, ACTUAL MAY VARY.

Location



Hamptons

INTERNATIONAL

+44 (0)20 8618 4551

international@hamptons.co.uk

www.hamptons-international.com