

Hamptons

INTERNATIONAL



41 Neff Hill Rd, Tolland, CT 06084

5 🏠 4 🚗

£700,000

(\$949,900)

Property details



Key features

- **Water: Other Water Source**
- **Garage Count: 3 Car Garage**
- **Fireplace Count: 1 Fireplace**
- **Cooling: Central A/C**
- **Sewer: Septic**
- **Special Program: Global Luxury**

Attributes

 **Garage**

41 Neff Hill Rd, Tolland, CT 06084

5  4 

£700,000
(\$949,900)

Description

NEW CONSTRUCTION ready for occupancy in the desirable Owl Ridge Subdivision. Luxurious Custom Built Cape Cod Home with 5 bedrooms, 3 1/2 bathrooms and a three car garage. The first floor has a primary bedroom suite and the second floor has an ensuite. The first floor has nine foot ceilings and a two story great room. The open-concept kitchen, dining area and great room blends style and functionality. These rooms have crown molding with modern finishes, warm natural light, and a spacious layout perfect for everyday living or entertaining. The large kitchen has custom cabinets, granite countertops with upscale stainless steel appliances, walk-in pantry and a deck off the eating area. The primary suite includes a soaking tub, walk-in shower and dual walk-in closets. The second floor includes the ensuite, 3 additional bedrooms and a 18' x 14' loft. Walkout basement is approximately 1500 square feet with a double door and 9 foot ceilings. The exterior boasts a 43' x 6' covered front porch and a 20' x 12 Trex deck. Bedroom 13.0ft x 14.0ft Bedroom 17.0ft x 17.0ft Bedroom 17.0ft x 17.0ft Eat-In Kitchen 15.0ft x 26.0ft Great Room 15.0ft x 21.0ft Master Suite 15.0ft x 18.0ft



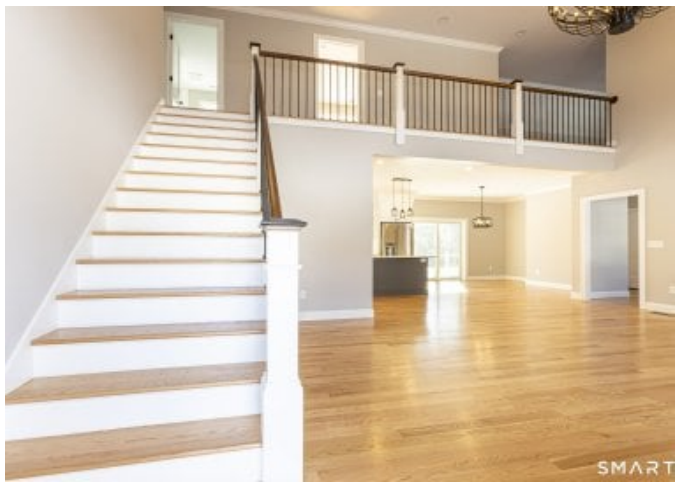


SMART





SMART



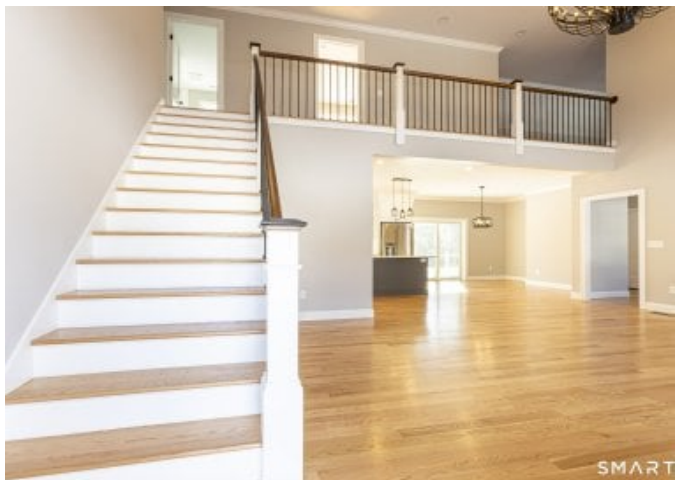


















SMART

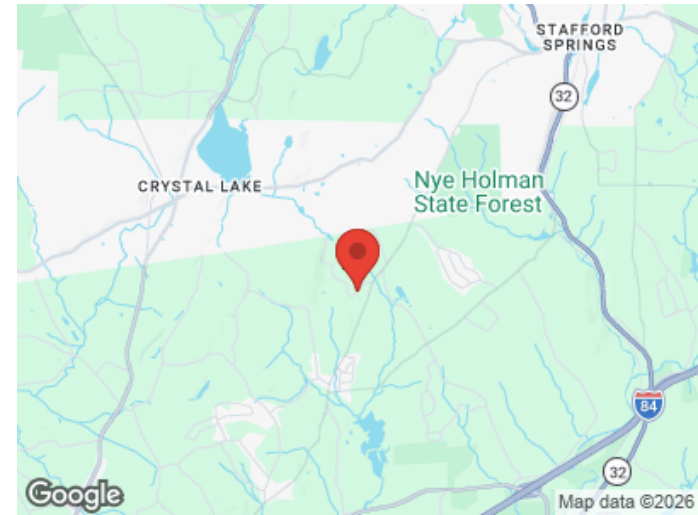
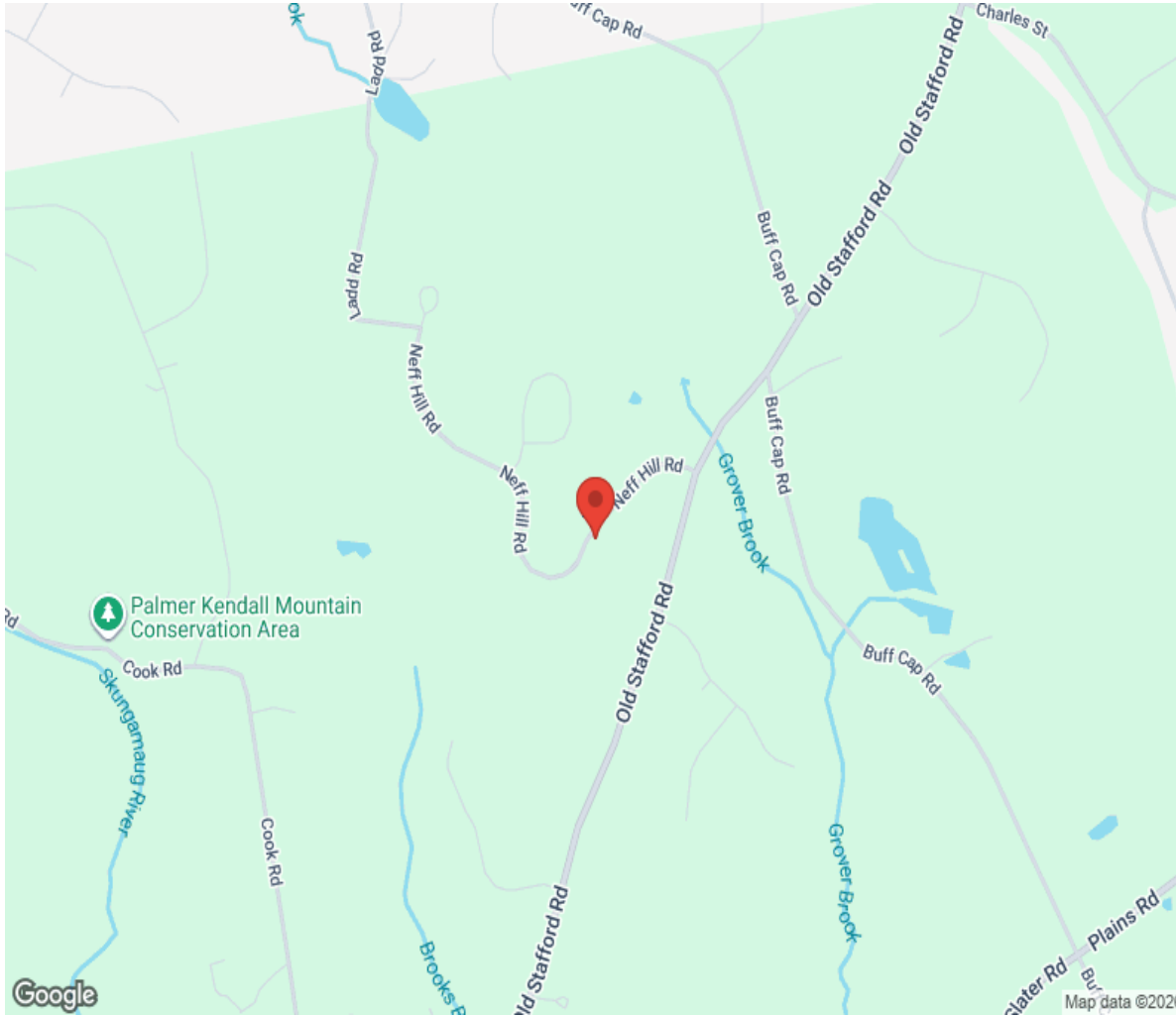






SMART

Location



Hamptons

INTERNATIONAL

+44 (0)20 8618 4551

international@hamptons.co.uk

www.hamptons-international.com