

Hamptons

INTERNATIONAL



5308 Folklore Way, Wilmington, NC 28412

4 🏠 3 🚗

£490,000

(\$654,500)

Property details



Key features

- **Basement: None**
- **Garage Count: 2 Car Garage**
- **Age: New Construction**
- **Garage Description: Garage**

Attributes

 **Garage**

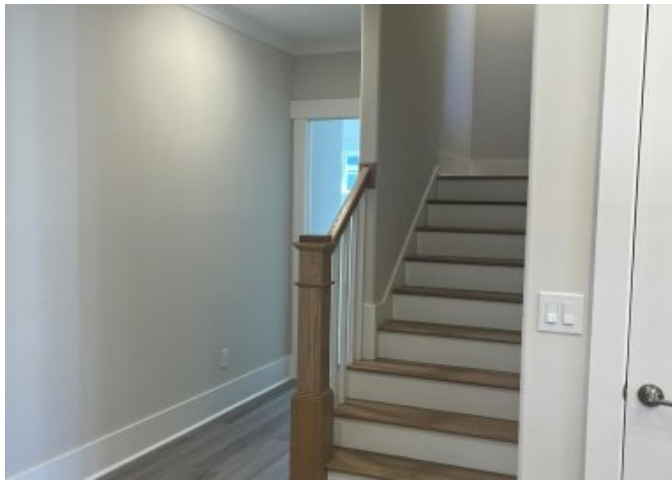
5308 Folklore Way, Wilmington, NC 28412

£490,000
(\$654,500)

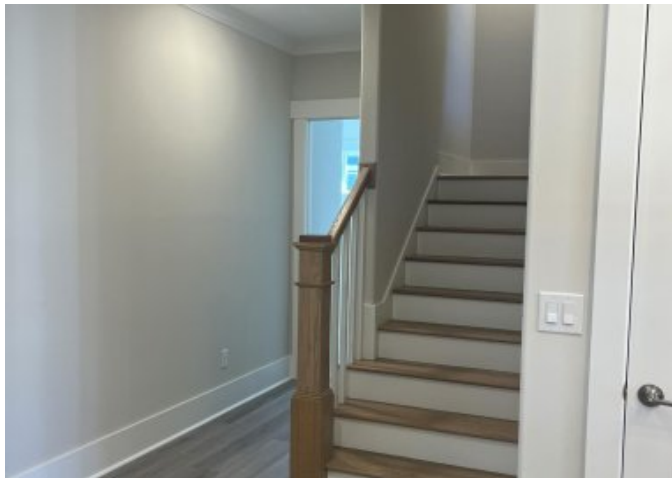
4  3 

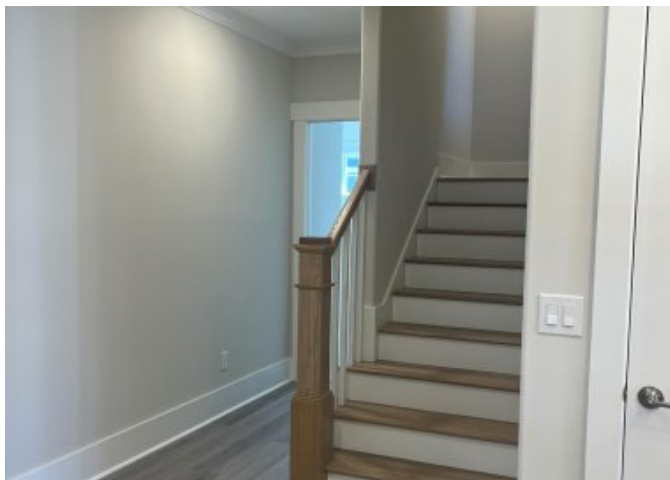
Description

Proposed Construction Early '27 completion. Welcome to the Monroe II - a beautifully designed home offering comfort, versatility, and timeless curb appeal. This spacious home features a flexible 4-bedroom layout, including an upstairs suite ideal for guests, a home office, or a family entertainment room. Upon entering from the covered front porch, you're greeted with an inviting foyer that opens to a bright, open-concept living area with a family room, dining space, and a modern kitchen with an oversized island and large walk-in pantry. Enjoy seamless indoor-outdoor living with access to a screened porch, perfect for relaxing or entertaining. The main level boasts a private owner's suite with an illuminated tray ceiling, a walk-in closet, and a luxurious master bath with dual vanities and a tiled, curbless shower. Two additional bedrooms on the main level share a full bath. Upstairs, a large fourth bedroom or flex room (with its own full bath) provides an ideal retreat for guests, hobbies, or media use. Additional highlights include a covered front porch, two-car garage, large utility room, custom touches like tray ceilings, plentiful storage, and thoughtful architectural details. This unique location within Riverlights offers easy access to the lake trail, amenity centers and several community parks. Trusst Builder Group is proud to offer a wide range of beautifully appointed single family homes in popular Riverlights. Riverlights is an extraordinary new-home community along a three-mile stretch of the scenic Cape Fear River. Residents enjoy an abundance of amenities, including parks, trails, water access, and gathering spaces that celebrate outdoor living. The community also offers a growing mix of on-site restaurants, shops, and services--with more on the way. Conveniently located between Wilmington's beautiful beaches and historic downtown, Riverlights is just minutes from shopping, dining, and the hospital.

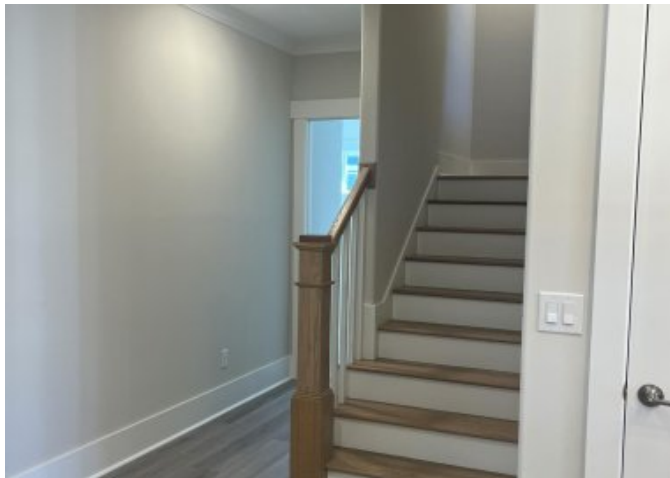


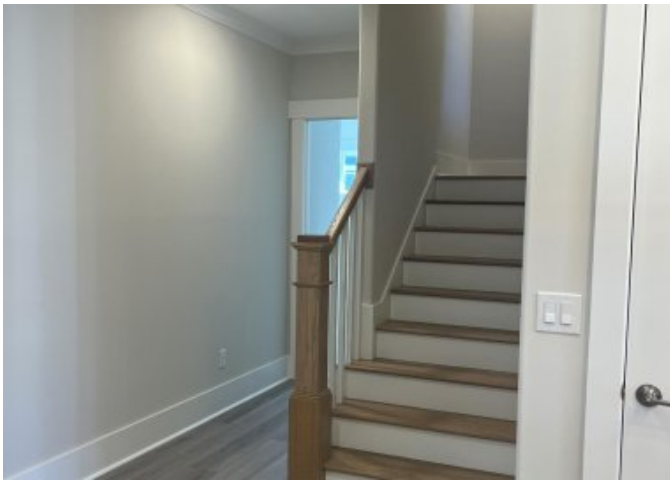






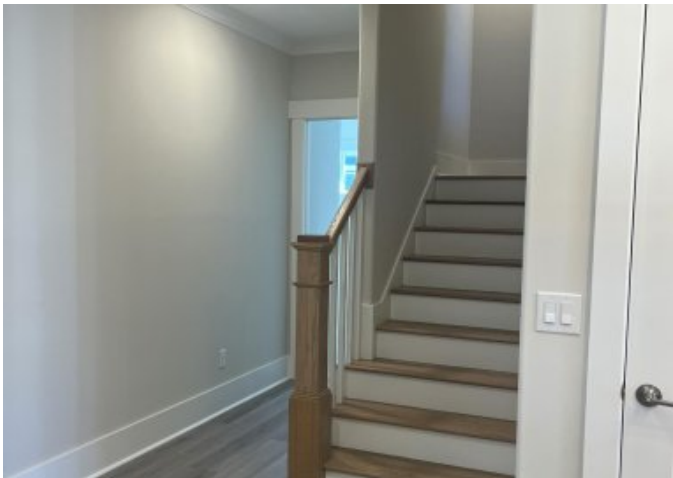


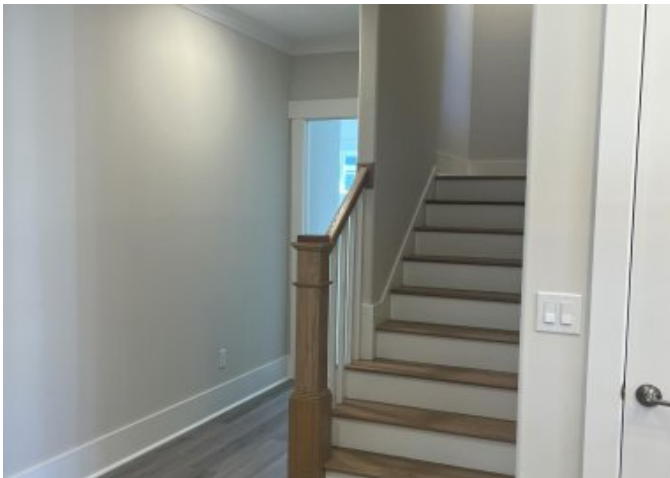
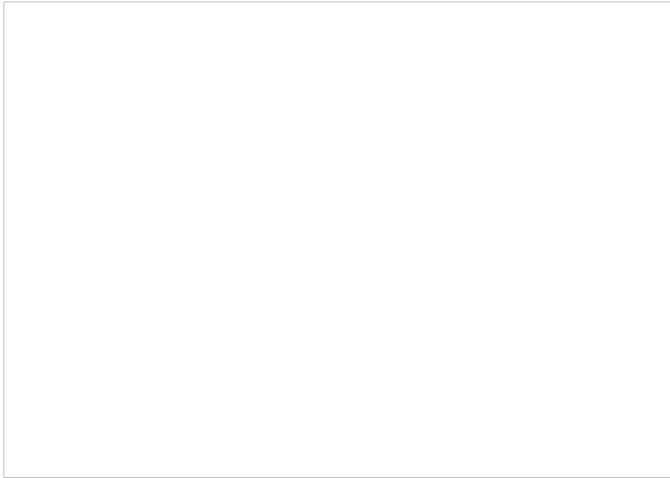




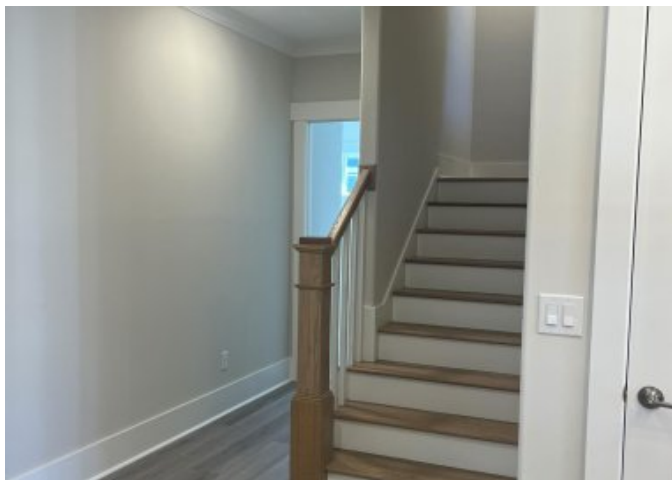


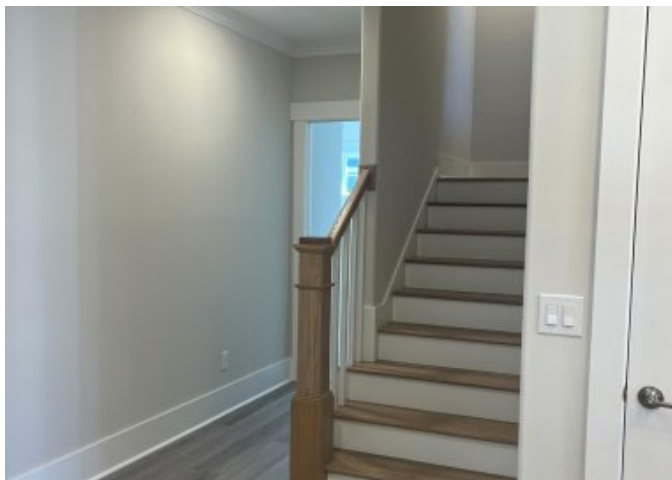
Similar Home













Location



Hamptons

INTERNATIONAL

+44 (0)20 8618 4551

international@hamptons.co.uk

www.hamptons-international.com