

# Hamptons

INTERNATIONAL



**530 Gregory Ave, Weehawken, NJ 07086**

2 1/2 2 1/2

**£510,000**

**(\$675,000)**



## Property details



### Key features

- **Garage Count: 1 Car Garage**
- **Pool Description: Pool**
- **Cooling: Central A/C**

### Attributes

-  **Swimming pool**
-  **Garage**
- **Apartment**
-  **Private parking**

**530 Gregory Ave, Weehawken, NJ 07086**

**£510,000**  
**(\$675,000)**

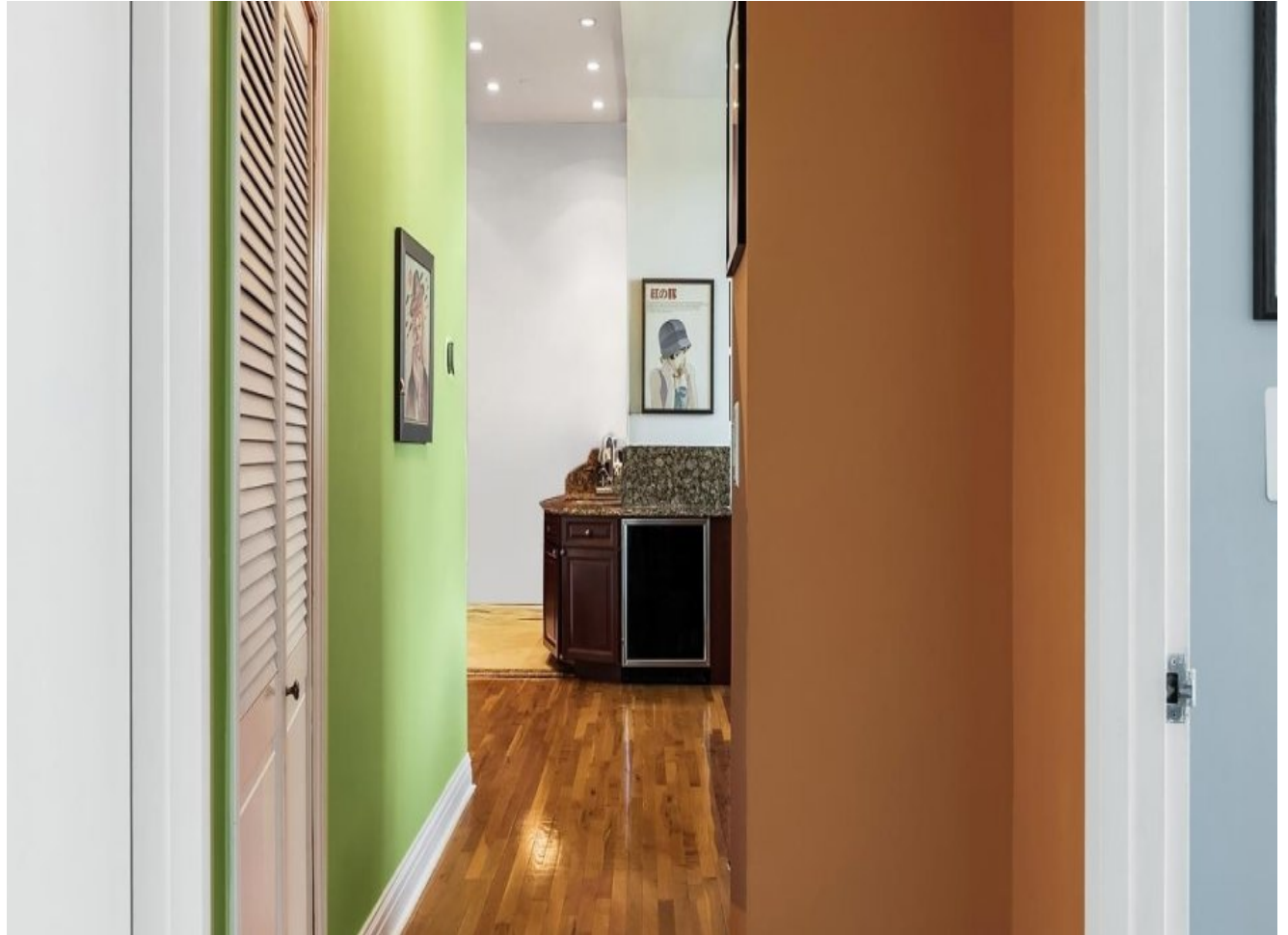
2 🏠 2 📄

## Description

One of Kind inspiring soho Loft style meets a slice of the Iconic NYC skyline in this 2 Bedroom 2 Bath condo. A serene bluff-top location surrounded by urban convenience in prime Weehawken. The attractive loft style design is filled with distinctive architectural details that are sure to impress. From soaring 14+-ft ceilings to gallery walls that are ideal for displaying your art collection. The supersized newer windows (2020) guarantee an abundance of light filled living space. The ideal open concept layout showcases exciting partial views of the NYC Midtown Skyline from all rooms. The generous sized Living, Dining & suburban size Kitchen embrace the way we like to live now with a warm vibe. The modern Kitchen is sure to please. Equipped with abundant cabinetry, granite counters, SS appliances newer DW; gas vented cooking range & plenty of prep counter space that makes cooking a breeze. An enormous Dining peninsula with wine fridge, dangling pendant lighting is ideal for guests to gather & everyday alike. Down the gallery hallway, find newer W/D. 2 spacious Bedrooms, 2 modern luxury full baths. Tranquility awaits in the supersized Primary Bedroom suite boasting a designated dressing area, walk-in-custom closet & luxury tiled full bath tub/shower. There is plenty of room to work remotely, a home office is currently pictured adjacent to the window. Notable features: Central HVAC; New W/D, 2020 energy efficient windows, 1 car Garage Parking, Pet friendly. HOA incl: 1 garage parking; h/c water, Amenities, 24hr concierge, maintenance on site. Discover Gregory Commons gated luxury condo. Exciting new hallways, common area interior design renovations are in progress! Amenities: 24hr concierge, Fitness ctr., Indoor Pool; Sauna; Lounge; garden courtyard. A terrific bluff top location in thriving Weehawken surrounded by terrific shopping Whole Food, Trader Joe, Restaurants, Cafes, Eateries & convenience. A Commuter's Paradise-only 2-Miles to NYC PA via NJ transit Bus, NY Waterway Ferry. Hassle free commuter options are just 2 blocks away. Inspiring lower interest rates are back- Don't Miss out!

























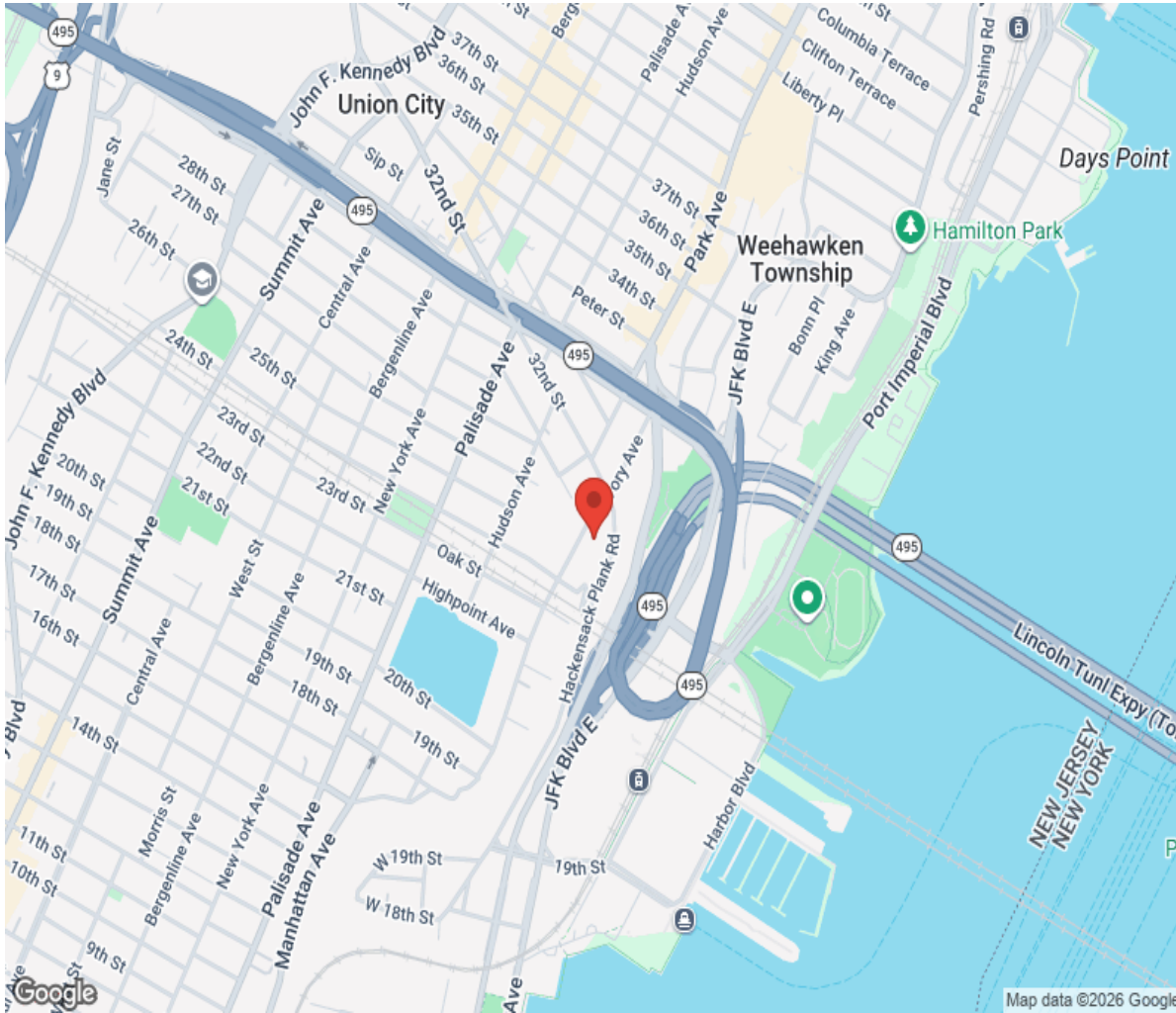








# Location



# Hamptons

INTERNATIONAL

**+44 (0)20 8618 4551**

**[international@hamptons.co.uk](mailto:international@hamptons.co.uk)**

**[www.hamptons-international.com](http://www.hamptons-international.com)**