

Hamptons

INTERNATIONAL



1519 Taber Dr, Chula Vista, CA 91911

4  3 

£1,060,000

(\$1,425,000)

Property details



Key features

- **Heating - Fuel Type: Wood**
- **Appliances: Refrigerator**
- **Flooring: Tile**
- **Appliances: Microwave**
- **Appliances: Dishwasher**
- **Appliances: Range / Oven**
- **Flooring: Laminate**
- **General: Ceiling Fan(s)**
- **Cooling: Central A/C**
- **Fireplace Description: Fireplace**

Attributes

-  **Garage**
-  **Private parking**
-  **Refurbished**

1519 Taber Dr, Chula Vista, CA 91911

4  3 

£1,060,000
(\$1,425,000)

Description

Set on a quiet cul-de-sac, this exceptional 4 bedroom, 2.5 bath residence offers sweeping canyon, hill and mountain views. With over \$300,000 in high end upgrades, this is a rare combination of luxury, privacy and location. Striking curb appeal welcomes you with modern, glass garage doors and a beautifully maintained exterior. This quiet Cul de sac home offers ample parking for residents and guests, has no neighboring home on one side offering immense privacy. New Renewal by Andersen windows frame the surrounding hillsides while filling the home with natural light, enhanced energy efficiency, and noise cancellation creating a peaceful retreat for all who enter the residence. The home, completely renovated inside and out in the last few years, showcases refined interiors, including a chef-inspired kitchen with custom cabinetry, premium stone surfaces, and upscale appliances. Spa-caliber luxury bathrooms, and a show-stopping custom primary closet by California Closets elevate everyday living. The backyard retreat is designed for effortless enjoyment, featuring elegant pavers, low-maintenance turf, a covered patio, and serene open views, ideal for entertaining or unwinding. Thoughtful upgrades extend throughout the home, including flooring, lighting, epoxy garage floors, glass garage doors, AC, and professional landscaping. Impeccably cared for and extensively improved, this Sunbow home delivers timeless quality, modern comfort and the freedom of no HOA fees or requirements. Bedroom Bedroom Bedroom Bedroom Full Bath Full Bath Half Bath





























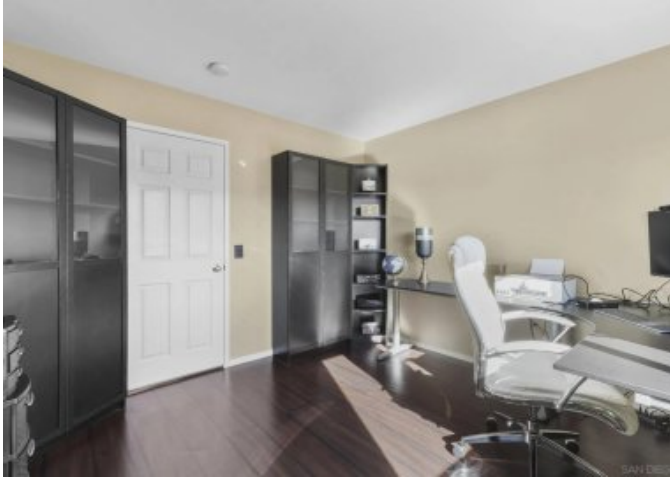






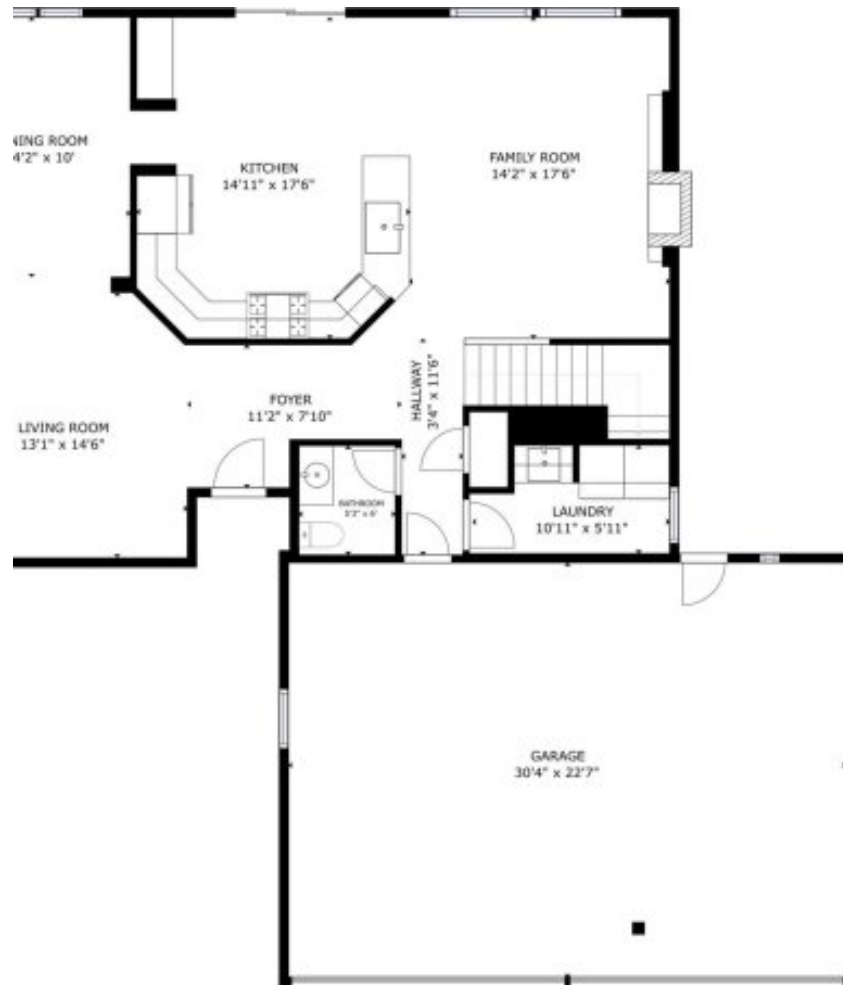




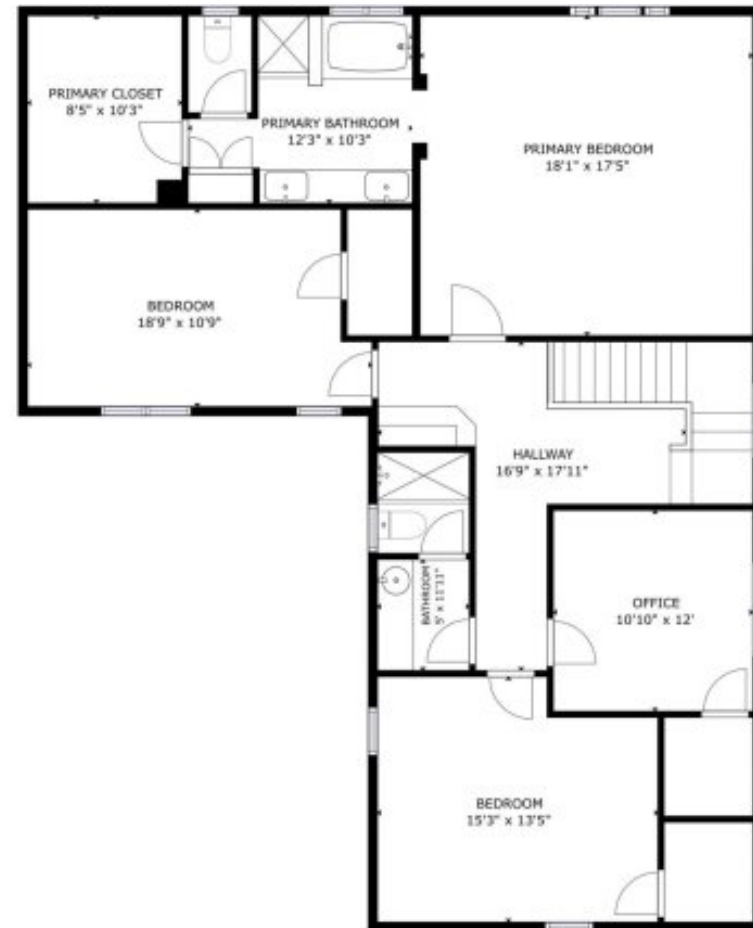








FLOOR 1



FLOOR 2

GROSS INTERNAL AREA
FLOOR 1: 1129 sq ft, FLOOR 2: 1412 sq ft
EXCLUDED AREAS: GARAGE: 684 sq ft
TOTAL: 2541 sq ft

SIZES AND DIMENSIONS ARE APPROXIMATE, ACTUAL MAY VARY.

Location



Hamptons

INTERNATIONAL

+44 (0)20 8618 4551

international@hamptons.co.uk

www.hamptons-international.com