

Hamptons

INTERNATIONAL



6 Setting Sun Ln, Travelers Rest, SC 29690

5 🏠 4 🚗

£560,000

(\$749,900)

Property details



Key features

- **Appliances: Microwave**
- **Appliances: Dishwasher**
- **Exterior: Underground Lawn Sprink**
- **Appliances: Range / Oven**
- **Exterior Living Space: Screened Poi**
- **Location: Slope Side**
- **Flooring: Wall to Wall Carpet**
- **Exterior Living Space: Porch**
- **Exterior Living Space: Deck**
- **Garage Description: Attached Gara**

Attributes

 **Garage**

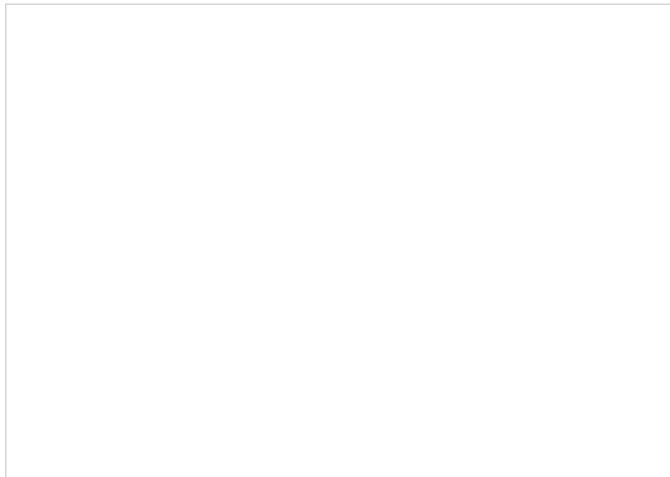
6 Setting Sun Ln, Travelers Rest, SC 29690

5  4 

£560,000
(\$749,900)

Description

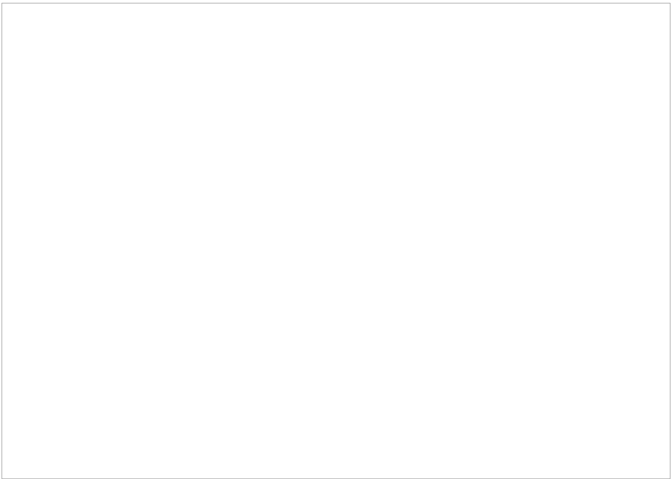
Now offered at \$774,900 — a standout opportunity for refined Upstate living just minutes to Green Valley Country Club and Furman University. This 5-bedroom, 3.5-bath home offers the space, flexibility, and comfort today's buyers are looking for — all just 4 miles to downtown Travelers Rest and 20 minutes to downtown Greenville SC. A true highlight of the home is the inviting rocking chair front porch — the perfect spot to unwind, entertain, or enjoy quiet evenings in a peaceful setting. Inside, the main-level primary suite features two walk-in closets and a spacious en suite bath, while upstairs includes three additional bedrooms, a Jack-and-Jill bath, and a versatile flex space. The fully finished lower level provides a private bedroom, full bath, and expansive living area — ideal for guests, multigenerational living, or a private retreat. A substantial unfinished space with garage-door access offers incredible storage or future workshop potential. With a functional layout, generous living spaces, and a welcoming community feel, this home delivers exceptional value in one of the Upstate's most desirable areas. Now competitively priced — schedule your showing and experience it for yourself.









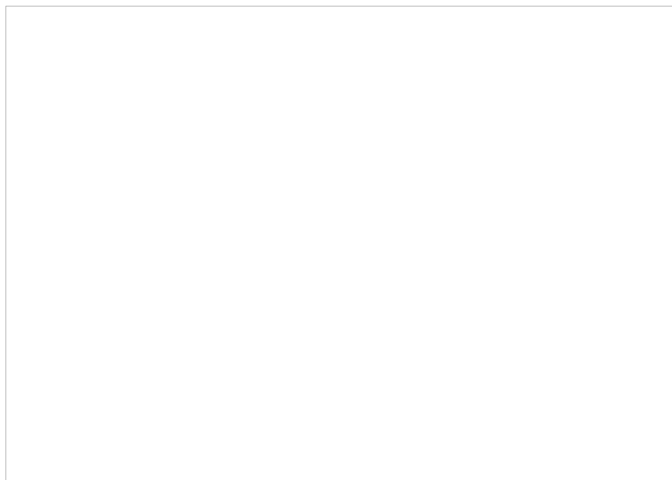














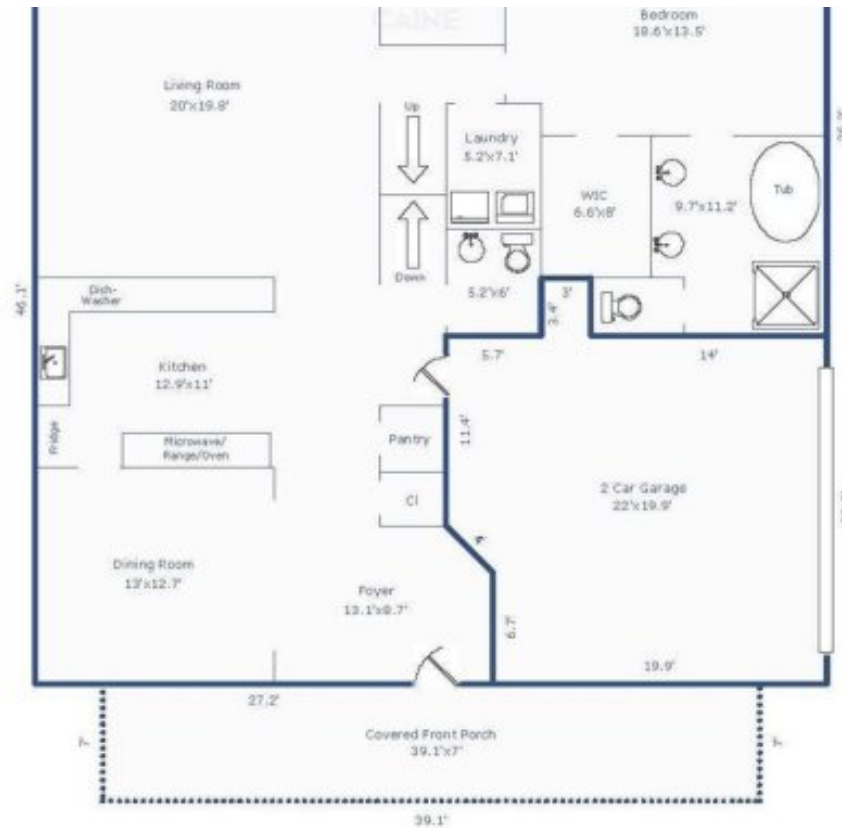












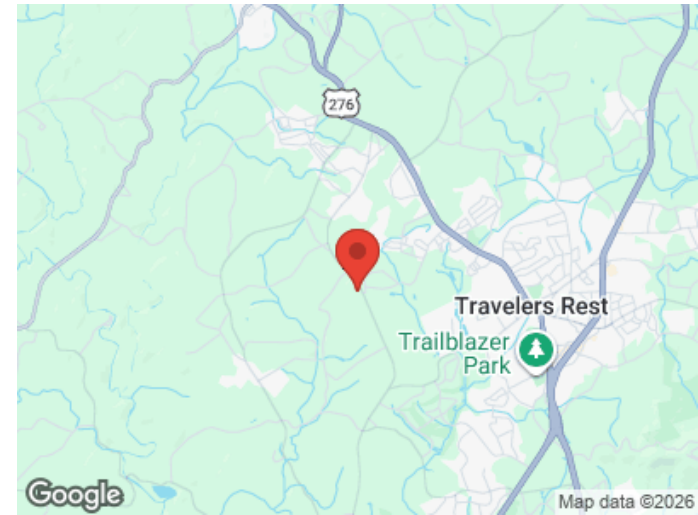
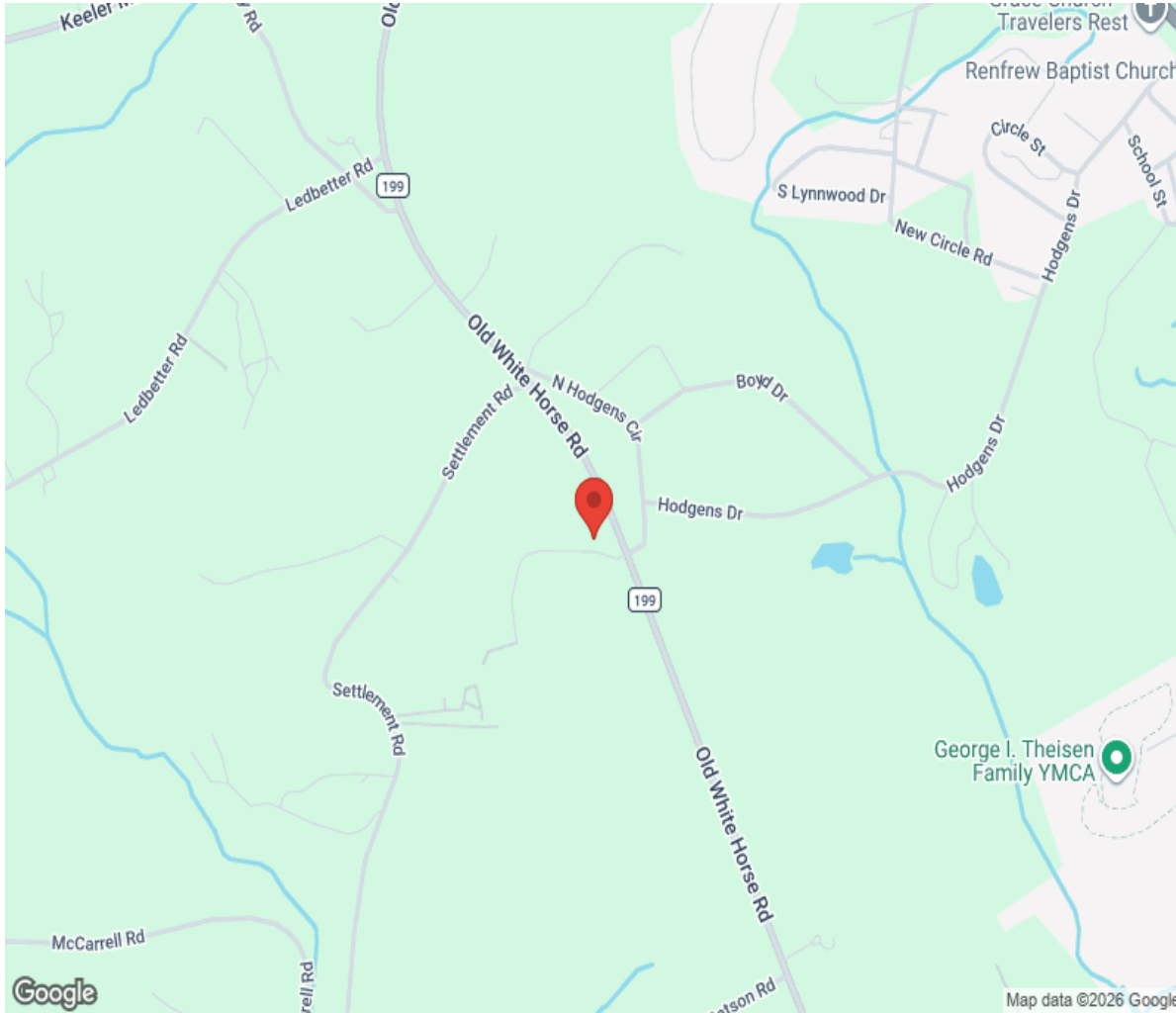
Sketch by Apex Sketch v6 Standard™

Comments:

AREA CALCULATIONS SUMMARY			
Code	Description	Net Size	Net Totals
GLA1	First Floor	1709.36	1709.36
GAR	Garage	461.95	461.95
P/P	Front Porch	273.70	

LIVING AREA BREAKDOWN			
Breakdown			Subtotals
First Floor			
	27.2	x	6.7
	3.4	x	14.0
			182.24
			47.60

Location



Hamptons

INTERNATIONAL

+44 (0)20 8618 4551

international@hamptons.co.uk

www.hamptons-international.com