

# Hamptons

INTERNATIONAL



5411331

**328 Hillside Ave, Livingston, NJ 07039**

5 ½ 5 ½

**£1,150,000**

**(\$1,550,000)**

## Property details

---



5411331

**328 Hillside Ave, Livingston, NJ 07039**

5 🏠 5 📄

**£1,150,000**  
**(\$1,550,000)**

### Key features

- **Heating - Fuel Type: Gas**
- **Garage Count: 1 Car Garage**
- **Sewer: Public**
- **Pool Description: Pool**
- **Fireplace Count: 4+ Fireplaces**
- **Water: City Water**
- **Special Program: Global Luxury**

## Description

Resort-style comfort meets smart upgrades in this exceptional 5-bedroom, 4.1-bath home offering approx. 4,160 sq ft of finished living space, including a leisure room ideal as a 6th bedroom. This beautifully maintained home blends classic warmth with modern efficiency in one of Livingston's most desirable locations. Expansive living areas are perfect for entertaining and relaxing, highlighted by four fireplaces (three gas, one wood-burning). The finished lower level offers flexible space for recreation, work, guests, or fitness, complete with a 4-person sauna. The primary suite features a cedar closet for added luxury and storage. The kitchen is equipped with a 6-burner Wolf stove, XL SubZero refrigerator and freezer, double wall oven, dishwasher, and trash compactor. Step outside to a private, fenced-in backyard designed for year-round enjoyment: a covered swim spa pavilion, fire pit with 360-degree seating, 26-ft greenhouse with five raised beds, full sprinkler system, and rubber-surfaced playground with updated lifted playhouse and basketball hoop. Built for efficiency and resilience with a Tesla solar system and four backup batteries, whole-house water filtration, two-zone HVAC, and a 2020 roof. Close to top schools, parks, houses of worship, and commuting routes. Bedroom 19.0ft x 16.0ft Bedroom 13.0ft x 20.0ft Bedroom 12.0ft x 16.0ft Bedroom 12.0ft x 11.0ft Dining Room 15.0ft x 22.0ft Kitchen 12.0ft x 24.0ft Living Room 13.0ft x 20.0ft

**328 Hillside Avenue  
 Livingston, NJ 07039**



**TOTAL: 4232 sq. ft.**  
 1st floor: 937 sq. ft., 2nd floor: 1121 sq. ft., 3rd floor: 1165 sq. ft., 4th floor: 1009 sq. ft.  
 EXCLUDED AREAS: GARAGE: 203 sq. ft., PORCH: 267 sq. ft., FIREPLACE: 22 sq. ft.,  
 WALLS: 312 sq. ft.

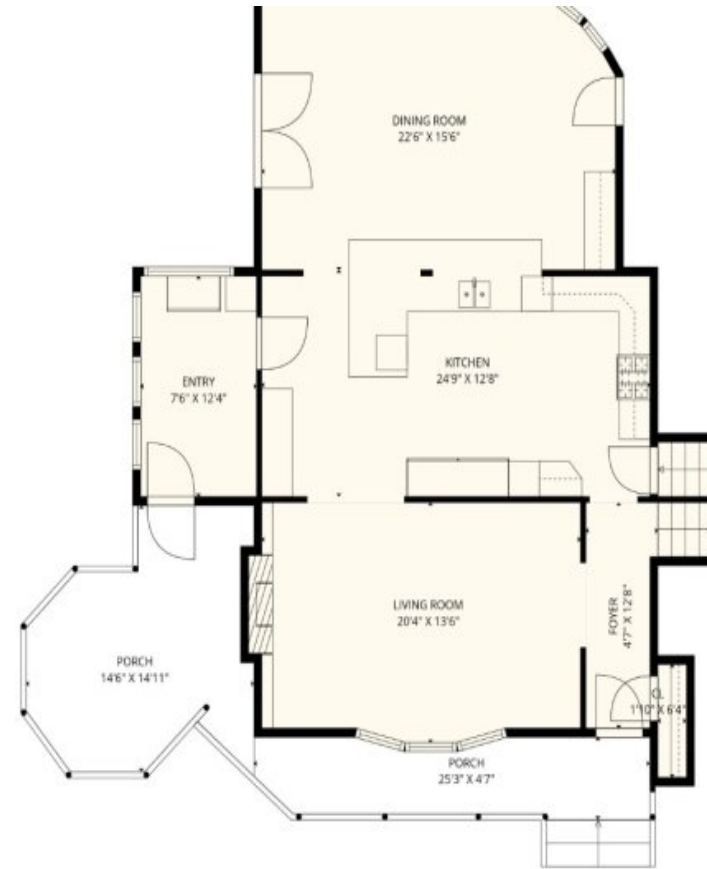
5411311



**TOTAL: 4232 sq. ft.**  
 1st floor: 937 sq. ft., 2nd floor: 1121 sq. ft., 3rd floor: 1165 sq. ft., 4th floor: 1009 sq. ft.  
 EXCLUDED AREAS: GARAGE: 203 sq. ft., PORCH: 267 sq. ft., FIREPLACE: 22 sq. ft.,  
 WALLS: 312 sq. ft.

**Second Floor**

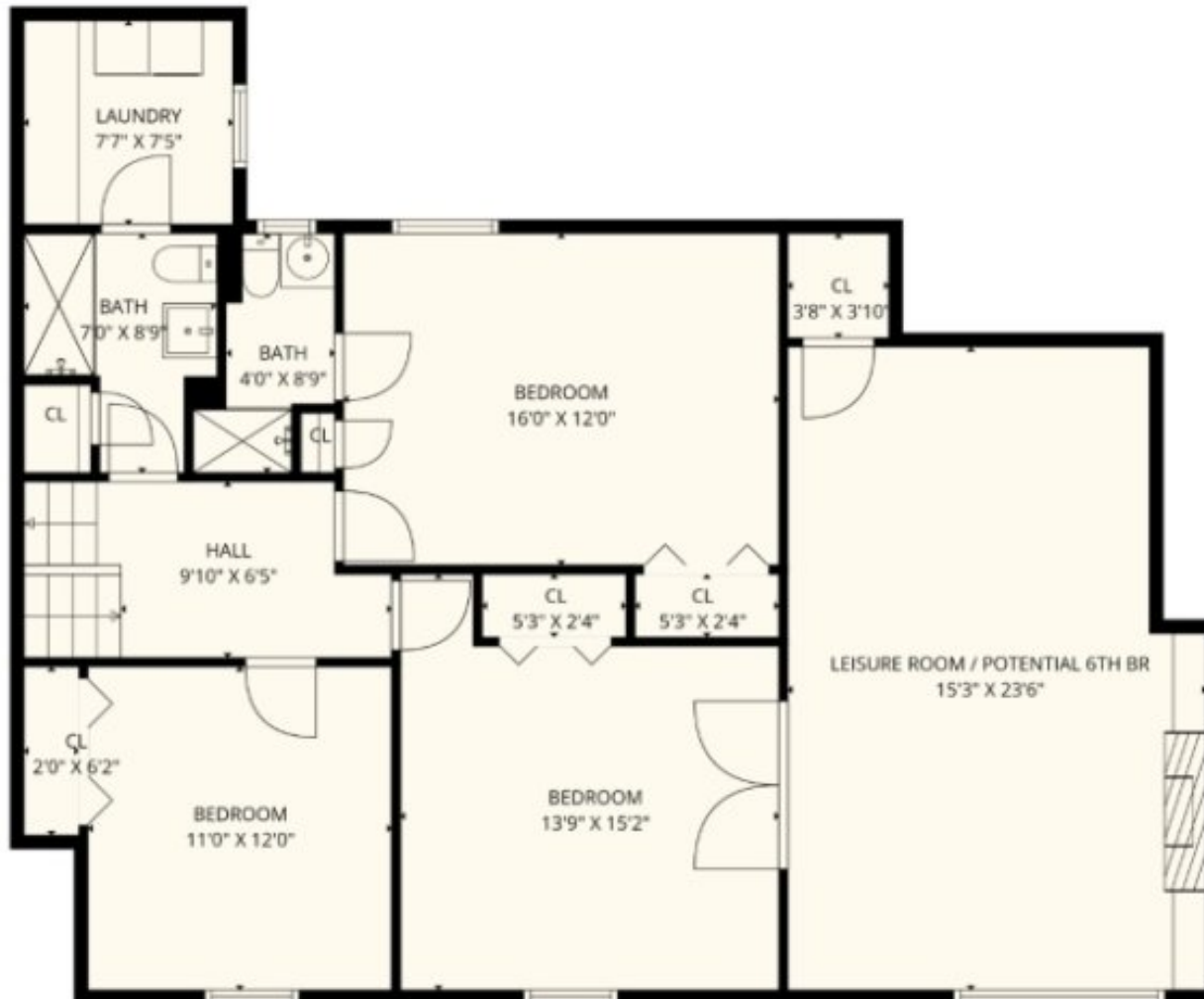
5411311



**TOTAL: 4232 sq. ft.**

1st floor: 937 sq. ft., 2nd floor: 1121 sq. ft., 3rd floor: 1165 sq. ft., 4th floor: 1009 sq. ft.  
 EXCLUDED AREAS: GARAGE: 203 sq. ft., PORCH: 267 sq. ft., FIREPLACE: 22 sq. ft.

**First Floor**



## Second Floor

**TOTAL: 4232 sq. ft**

1st floor: 937 sq. ft, 2nd floor: 1121 sq. ft, 3rd floor: 1165 sq. ft, 4th floor: 1009 sq. ft

EXCLUDED AREAS: GARAGE: 203 sq. ft, PORCH: 267 sq. ft, FIREPLACE: 22 sq. ft,

WALLS: 312 sq. ft



Third Floor

TOTAL: 4252 sq. ft.  
1st floor: 907 sq. ft., 2nd floor: 1125 sq. ft., 3rd floor: 1165 sq. ft., 4th floor: 1009 sq. ft.  
EXCLUDED AREAS: GARAGE: 289 sq. ft., PORCH: 267 sq. ft., FIREPLACE: 22 sq. ft.,  
WALLS: 312 sq. ft.

5411331



Second Floor

TOTAL: 4252 sq. ft.  
1st floor: 907 sq. ft., 2nd floor: 1125 sq. ft., 3rd floor: 1165 sq. ft., 4th floor: 1009 sq. ft.  
EXCLUDED AREAS: GARAGE: 289 sq. ft., PORCH: 267 sq. ft., FIREPLACE: 22 sq. ft.,  
WALLS: 312 sq. ft.

5411331



5411331



411331



331



TOTAL: 4252 sq. ft.  
1st floor: 907 sq. ft., 2nd floor: 1121 sq. ft., 3rd floor: 1165 sq. ft., 4th floor: 1009 sq. ft.  
EXCLUDED AREAS: GARAGE: 289 sq. ft., PORCH: 267 sq. ft., FIREPLACE: 22 sq. ft.,  
HALLS: 312 sq. ft.

Second Floor

5411331



5411331



411331



5411331

5411331



411331



**Second Floor**  
TOTAL: 4252 sq. ft.  
1st floor: 907 sq. ft., 2nd floor: 1121 sq. ft., 3rd floor: 1165 sq. ft., 4th floor: 1009 sq. ft.  
EXCLUDED AREAS: GARAGE: 289 sq. ft., PORCH: 267 sq. ft., FIREPLACE: 22 sq. ft.,  
HALLS: 312 sq. ft.

5411331



5411331





TOTAL: 4252 sq. ft.  
1st floor: 907 sq. ft., 2nd floor: 1121 sq. ft., 3rd floor: 1165 sq. ft., 4th floor: 1009 sq. ft.  
EXCLUDED AREAS: GARAGE: 289 sq. ft., PORCH: 267 sq. ft., FIREPLACE: 22 sq. ft.,  
WALLS: 312 sq. ft.

Second Floor

5411331



5411331





331



TOTAL: 4252 sq. ft.  
1st floor: 907 sq. ft., 2nd floor: 1121 sq. ft., 3rd floor: 1165 sq. ft., 4th floor: 1009 sq. ft.  
EXCLUDED AREAS: GARAGE: 289 sq. ft., PORCH: 267 sq. ft., FIREPLACE: 22 sq. ft.,  
HALLS: 312 sq. ft.

Second Floor

5411331



5411331



411331



TOTAL: 4252 sq. ft.  
1st floor: 907 sq. ft., 2nd floor: 1125 sq. ft., 3rd floor: 1165 sq. ft., 4th floor: 1059 sq. ft.  
EXCLUDED AREAS: GARAGE: 289 sq. ft., PORCH: 267 sq. ft., FIREPLACE: 22 sq. ft.,  
HALLS: 312 sq. ft.

Second Floor

5411331



5411331



411331



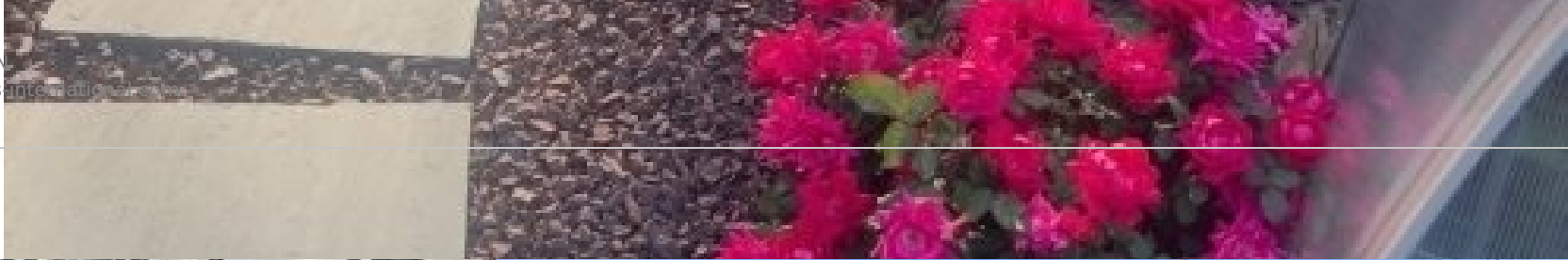
TOTAL: 4262 sq. ft.  
1st floor: 907 sq. ft., 2nd floor: 1121 sq. ft., 3rd floor: 1165 sq. ft., 4th floor: 1009 sq. ft.  
EXCLUDED AREAS: GARAGE: 289 sq. ft., PORCH: 267 sq. ft., FIREPLACE: 22 sq. ft.,  
HALLS: 312 sq. ft.

Second Floor

5411311







TOTAL: 4252 sq. ft.  
1st floor: 907 sq. ft., 2nd floor: 1121 sq. ft., 3rd floor: 1165 sq. ft., 4th floor: 1009 sq. ft.  
EXCLUDED AREAS: GARAGE: 289 sq. ft., PORCH: 267 sq. ft., FIREPLACE: 22 sq. ft.,  
HALLS: 312 sq. ft.

Second Floor

5411331



411331

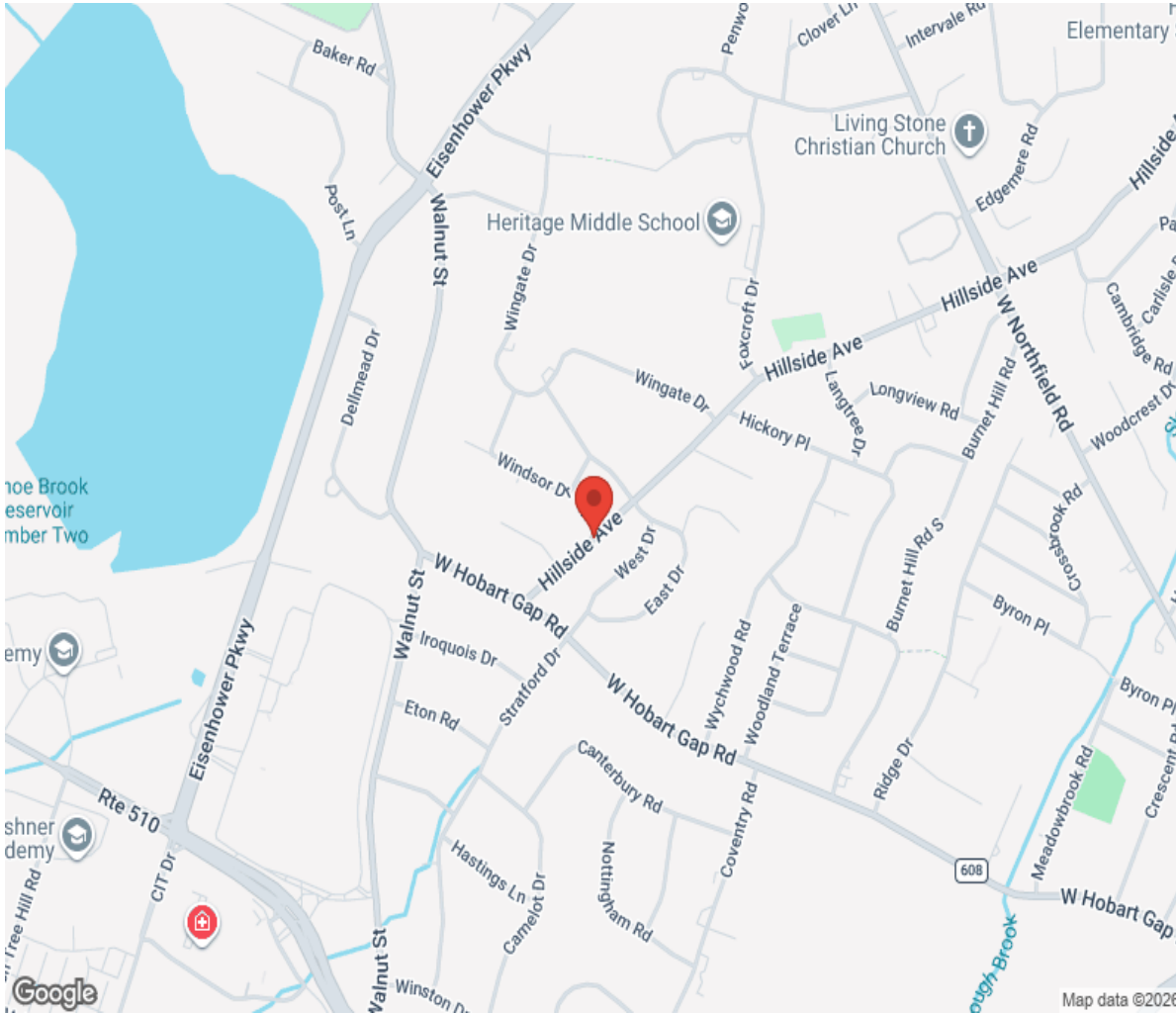


5411331



411331

# Location



# Hamptons

INTERNATIONAL

**+44 (0)20 8618 4551**

**[international@hamptons.co.uk](mailto:international@hamptons.co.uk)**

**[www.hamptons-international.com](http://www.hamptons-international.com)**