

Hamptons

INTERNATIONAL



8020 Lloyd Ave, Swissvale, PA 15218

3 1/2 2 1/2

£230,000

(\$299,000)

Property details



Key features

- **Sewer: Public**
- **Fireplace Count: 1 Fireplace**
- **Cooling: Central A/C**
- **Heating Type: Forced Air**
- **Water: City Water**

8020 Lloyd Ave, Swissvale, PA 15218

3 🏠 2 🚗

£230,000
(\$299,000)

Description

Welcome to this nicely maintained home in a prime Swissvale location near the border with Edgewood. Great natural light with the open floor plan creates an airy, inviting feel perfect for both everyday living and entertaining. The living and dining rooms feature wide-plank hardwood floors and are anchored by a stylish, modern wood-burning stove that adds warmth and character. The updated kitchen offers stainless steel appliances and excellent flow to the main living spaces. For those seeking the ease of one-level living, the first floor includes a bedroom, full bath, and dedicated laundry area. Convenient rear entry access provides just two steps into the kitchen-ideal for ease of groceries or minimizing stairs. Upstairs, you'll find two additional bedrooms, including a primary suite with its own ensuite full bath. An additional flexible living area offers endless possibilities-family room, sitting area, play space, or home office. A rare combination of light, layout, and location-this home delivers comfort, flexibility, and convenience in one of the East End's most accessible neighborhoods.



















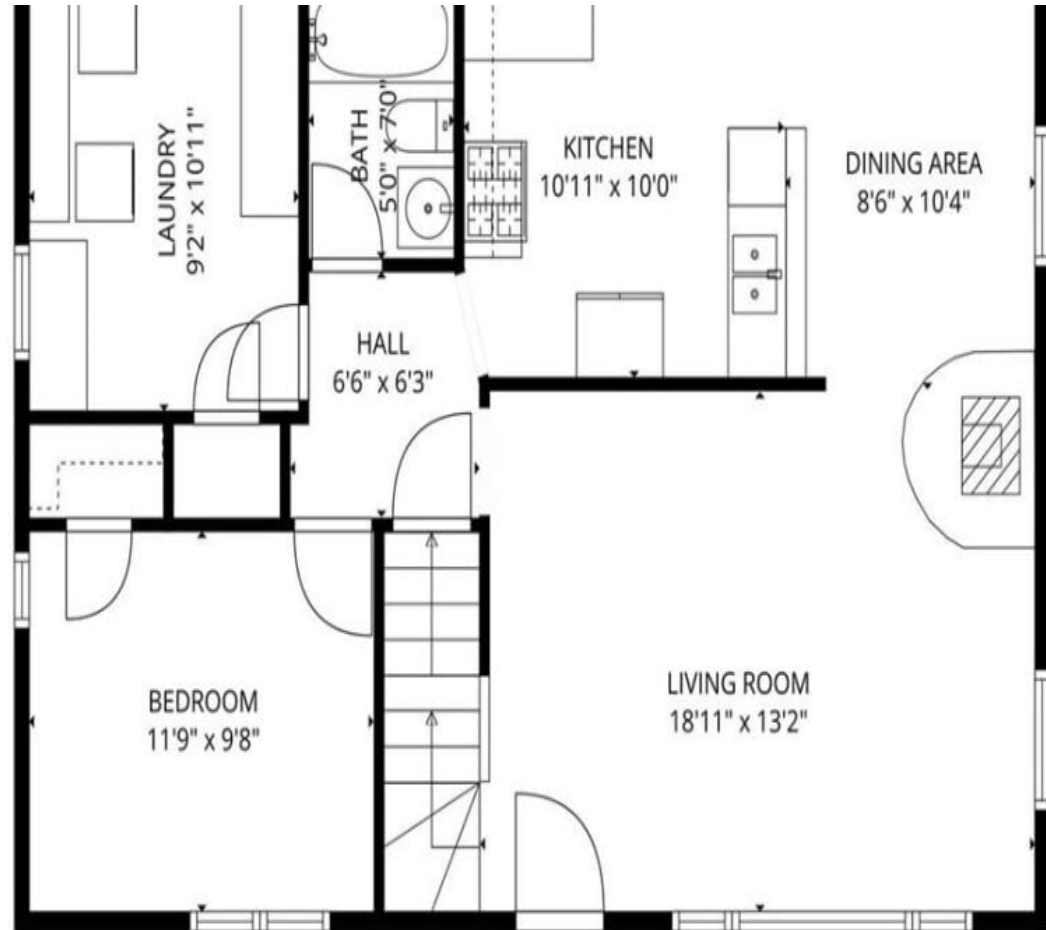






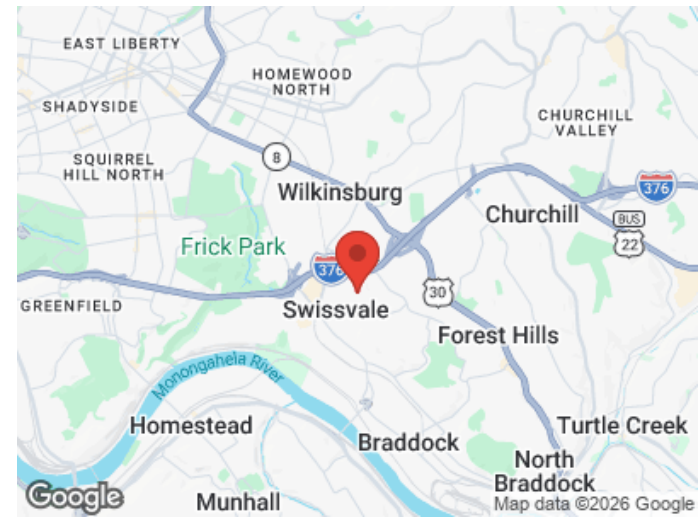
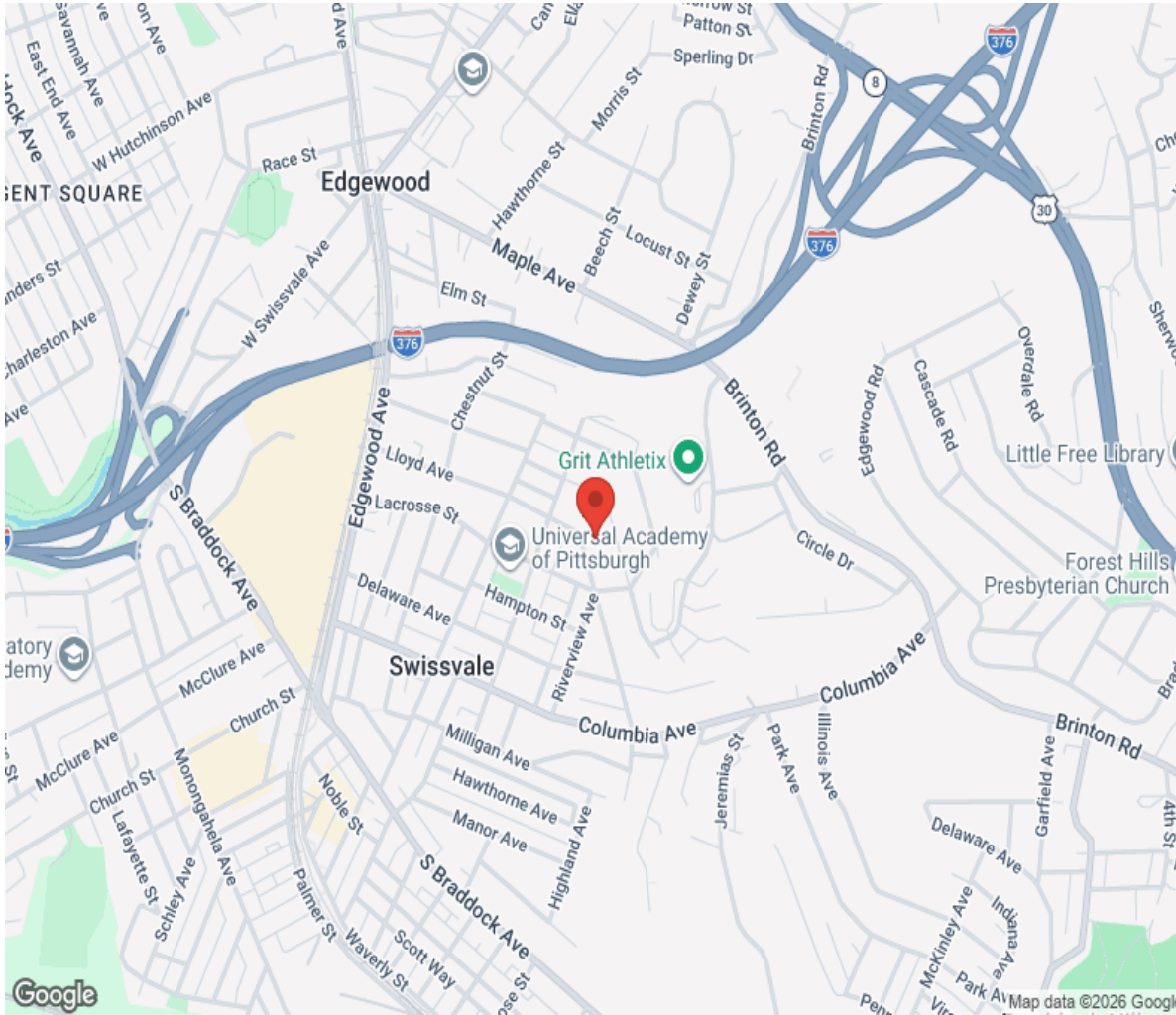








Location



Hamptons

INTERNATIONAL

+44 (0)20 8618 4551

international@hamptons.co.uk

www.hamptons-international.com