

Hamptons

INTERNATIONAL



Kings Meadow, Whyteleafe Hill, Whyteleafe, CR3

2  1  1 

GUIDE PRICE

£450,000

(£450,000)

Property details



Key features

- Show Home Open- please Call To Book
- Situated Within the Beautifully Res
- Two Bedrooms each with Fitted Wa
- Double Aspect Open-Plan Kitchen /
- High Specification Kitchens with Mi
- High Specification Bathroom with P
- Separate Utility Cupboard
- Herringbone Flooring & Zoned Unde
- Highly Secure with Gated Entrance
- Set within 40 Acres of Landscaped

Attributes

- Apartment

Kings Meadow, Whyteleafe Hill, Whyteleafe, CR3 GUIDE PRICE

£450,000

(£450,000)

2 1 1

Description

Show Home Open 5 - Book Your Dedicated Appointment Today! A well-appointed, two bedroom apartment positioned on the ground floor of the 'Hurricane Wing' Positioned within the beautifully restored Hurricane Wing, Apartment 4 is one of just eight bespoke homes created within this historic building. A two bedroom, ground floor apartment positioned on the corner of the building providing double-aspect views from the open plan kitchen / dining / living room. The kitchen is of high specification with quartz worktops which are heat, stain and scratch resistant, include Mile integrated appliances, wine fridge and an instant boiler water tap. Both double bedrooms feature fitted wardrobes. The contemporary bathroom is finished to a high standard, featuring Porcelanosa sanitaryware, a vanity unit and a heated, illuminated mirror. Practicality is built in throughout, with zoned underfloor heating for year-round comfort and a useful utility cupboard offering discreet storage. Kings Meadow is accessed via a private road, with secure electronic gates and an intercom system to each apartment. CCTV is provided throughout the communal areas, ensuring a reassuring sense of security within this exclusive development. Kings Meadow marks the new, exciting chapter of the former Victorian estate of Flintfields and later used as the Officers' Mess at RAF Kenley during the Second World War. Throughout the development, every detail has been carefully considered to restore and preserve the architectural integrity of the original buildings. Now transformed into a collection of 53 beautifully designed, luxury apartments, ranging from one to three-bedrooms, along with two unique mews houses and the 'impressive' restored Gate Lodge, some of which provide private outdoor space. Residents will enjoy exclusive on-site amenities including the Lounge and Library; a space for residents to unwind, socialise, welcome their guests or work from home. Set within 40 acres of landscaped communal grounds, Kings Meadow also features a Gym and Racquets Sports Hub as well as the opportunity to secure your own allotment (limited basis). Situation Kings Meadow is ideally positioned just off Whyteleafe Hill and directly beside the open expanse of Kenley Aerodrome. The setting provides direct access to nature trails through Kenley Common and Coulsdon Common, perfect for walkers, cyclists, and wildlife enthusiasts. The development is ideally placed with convenient access to the M25, connecting journeys to London, Gatwick Airport and the South Coast. Caterham town centre is just 1.3 miles distant with a mainline station, plenty of cafes and restaurants and varied high street shopping. The development is well connected to local transport links. Whyteleafe train station (0.7 miles) has a direct line to London Bridge in 34 minutes and Upper Warlingham (0.9 miles) has direct services to London Victoria in as little as 30 minutes. There will be a bus stop adjacent to the development entrance providing access to the local areas as well as further afield Reigate, South Croydon, Godstone. Property Ref Number: HAM-63297 Additional Information *Please note photography is a variation of the show home and computer generated images. Service Charges 2026: to be confirmed Show Home Open: Please call to arrange your personal appointment.

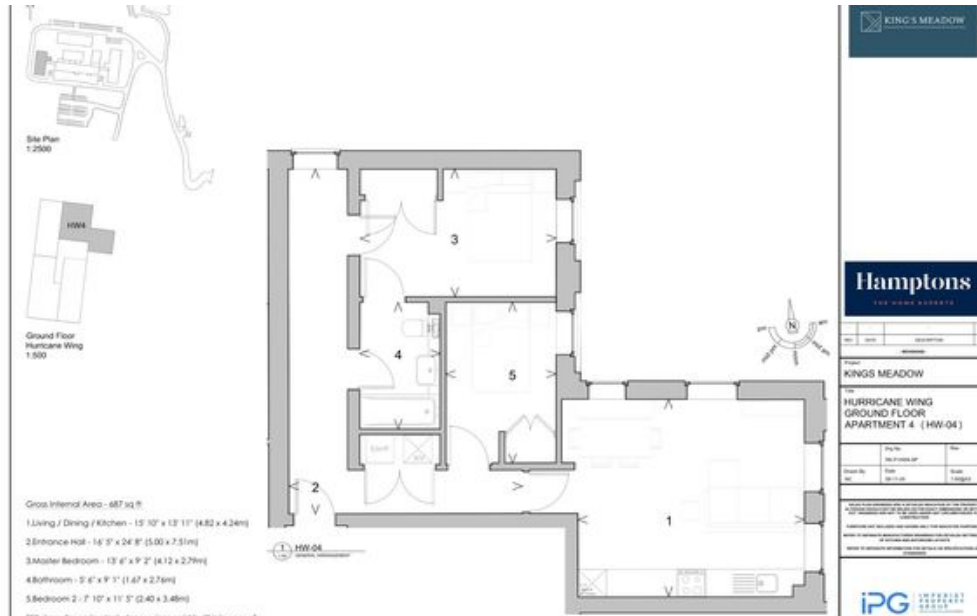




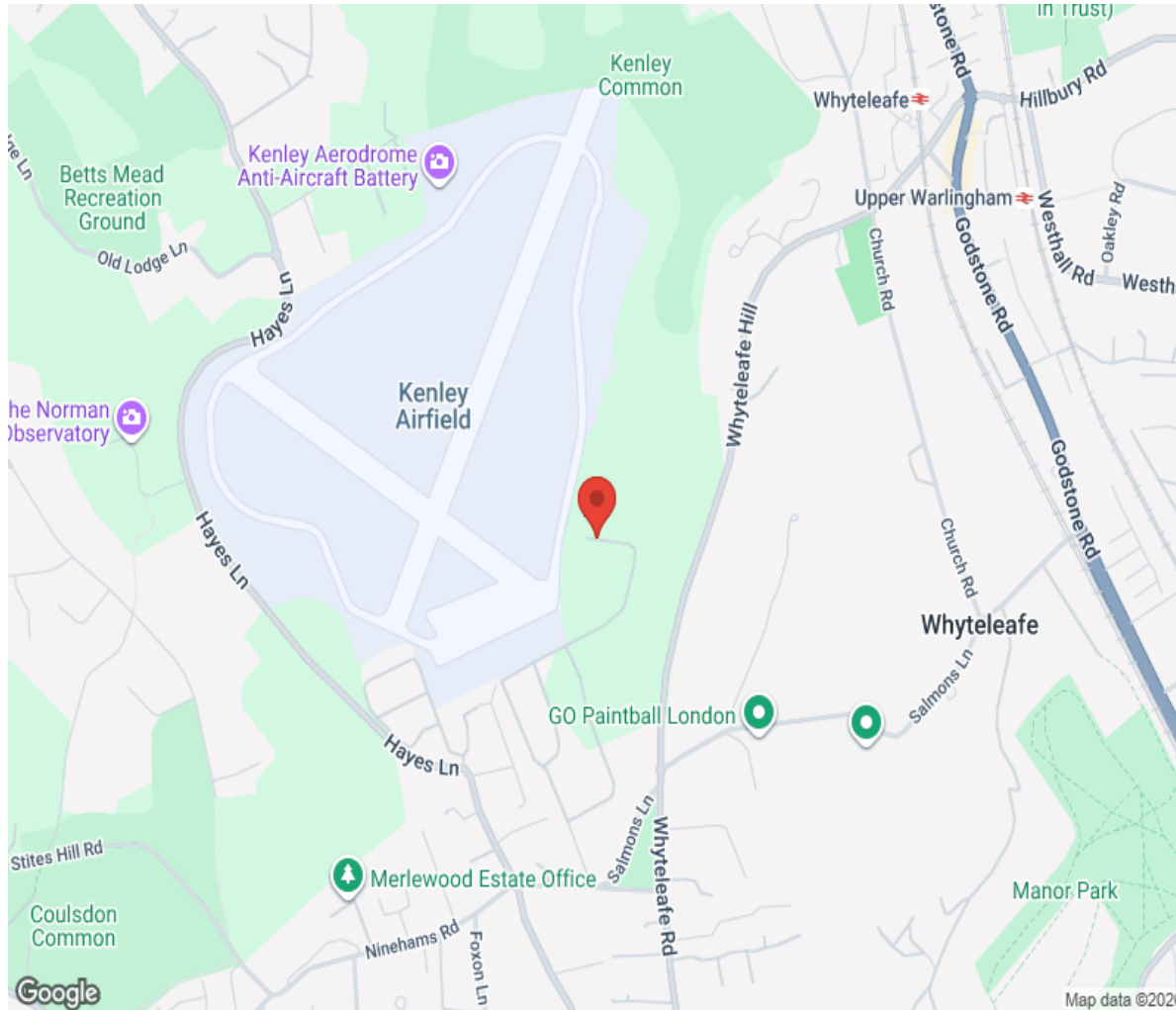




Floor plan



Location



Hamptons

INTERNATIONAL

+44 (0)20 8618 4551

international@hamptons.co.uk

www.hamptons-international.com