

Hamptons

INTERNATIONAL



Prince Of Wales Drive, London, SW11

4  2  2 

GUIDE PRICE

£1,750,000

(£1,750,000)

Property details



Key features

- Overlooking Battersea Park
- Sought After Mansion Block
- Four Bedrooms
- Two Reception Rooms
- Open Plan Kitchen/Dining
- Private Garden
- Two Bathrooms
- Communal Gardens

Attributes

- Apartment

Prince Of Wales Drive, London, SW11

GUIDE PRICE

£1,750,000

(£1,750,000)

4 🏠 2 🚗 2 📧

Description

Situated within Cyril Mansions, part of the much sought after Prince of Wales Drive, a wonderful four bedroom, two bathroom ground floor garden apartment offering lateral accommodation overlooking Battersea Park. Situated within the highly sought-after Cyril Mansions, this impressive and beautifully presented four bedroom apartment overlooks Battersea Park while also enjoying both a private and communal garden. Spanning over 1590 sq ft, the property is entered through a bright, generous and welcoming hallway, off of which is a fantastic formal reception room with French doors opening directly onto the private garden. Further along the hall you enter a beautiful light filled living room with large sash windows offering views out onto the mature trees of Battersea Parks. This opens to a substantial kitchen/dining room providing a wonderful space full of character, featuring exposed brickwork, ample cabinetry, integrated appliances including a large range-style cooker and the added convenience of a utility sink. The accommodation comprises three well-proportioned double bedrooms and a fourth bedroom ideal for a dressing room or child's bedroom, with the principal bedroom benefiting from a beautifully appointed en suite bathroom complete with a walk-in shower and striking copper freestanding bath. All of the bedrooms offer views of the garden, and an additional bathroom completes the accommodation. The apartment is further enhanced by elegant parquet flooring, a wealth of period features including original fireplaces, and an abundance of large sash windows that flood the space with natural light. The property is offered to the market with no onward chain and further benefits from an onsite porter, large communal gardens and a share of freehold tenure. Situation Cyril Mansions is a most sought-after mansion block on Prince of Wales Drive overlooking Battersea Park, with circa 200 acres of green space, a Zoo and access to the Thames. The newly developed Battersea Power Station provides an array of shops, bars and restaurants with some of Europe's best shopping and notable restaurants. Battersea Power Station (Zone 1), is served by the Northern Line extension which offers fast and frequent access to both central London and the City. Further transport links can be found at Battersea Park and Queenstown Road for overground services to Victoria and Waterloo respectively. Further transport links include the river bus running between 24 piers East to West. Property Ref Number: HAM-62631























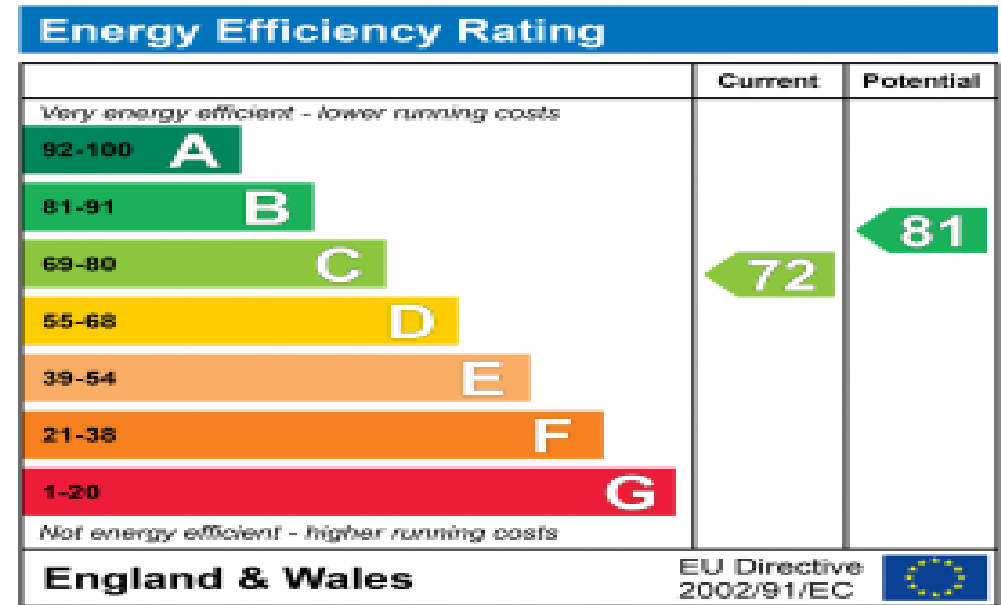








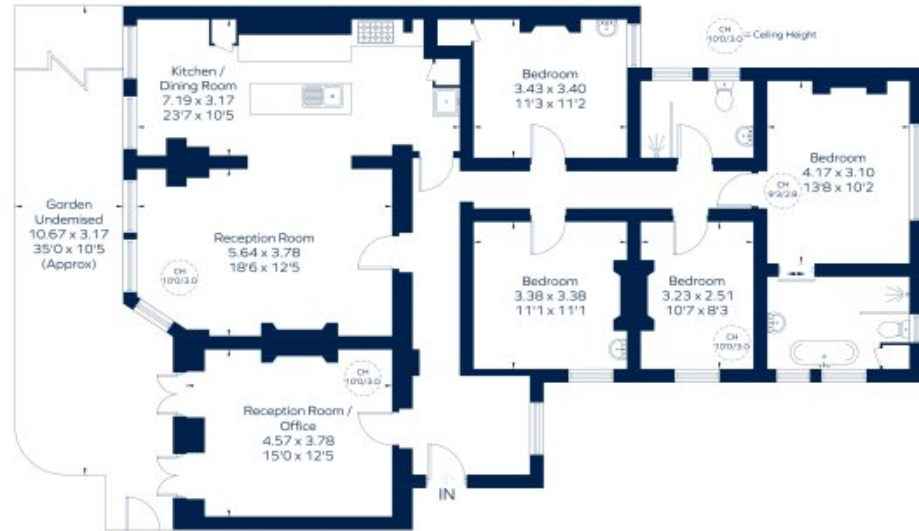




Floor plan

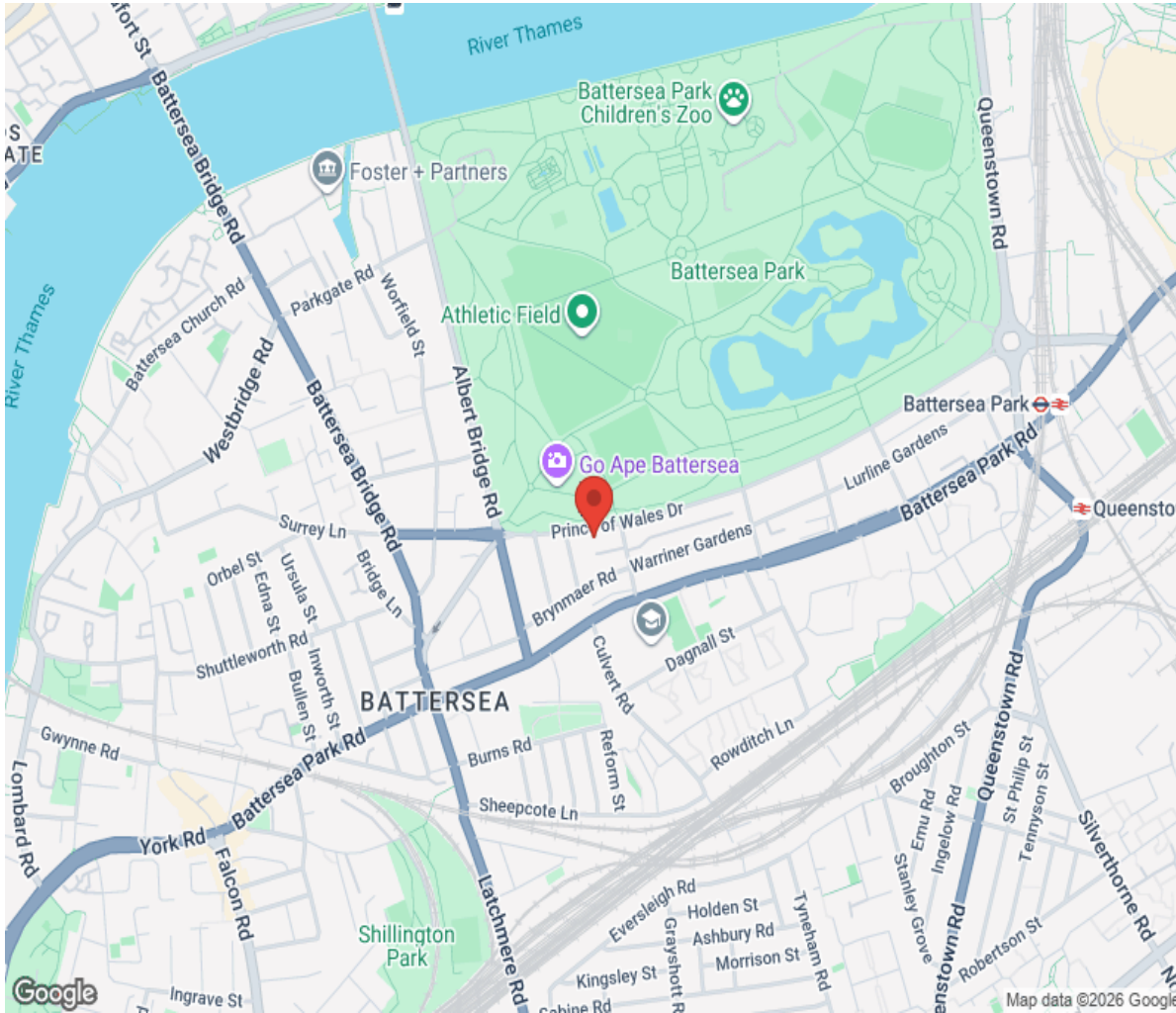
LYHE MANSIONS

Approximate Gross Internal Area
1599 sq. ft. (148.6 sq. m.)



This plan is for layout guidance only. Not drawn to scale unless stated. Windows and door openings are approximate. All the every room is taken in the preparation of this plan, please check all dimensions, spaces and compass bearings before making any decisions upon them.

Location



Hamptons

INTERNATIONAL

+44 (0)20 8618 4551

international@hamptons.co.uk

www.hamptons-international.com