


Hamptons

INTERNATIONAL

Ray Mead Road, Maidenhead, SL6

2  2  1 

OFFERS IN EXCESS OF

£930,000

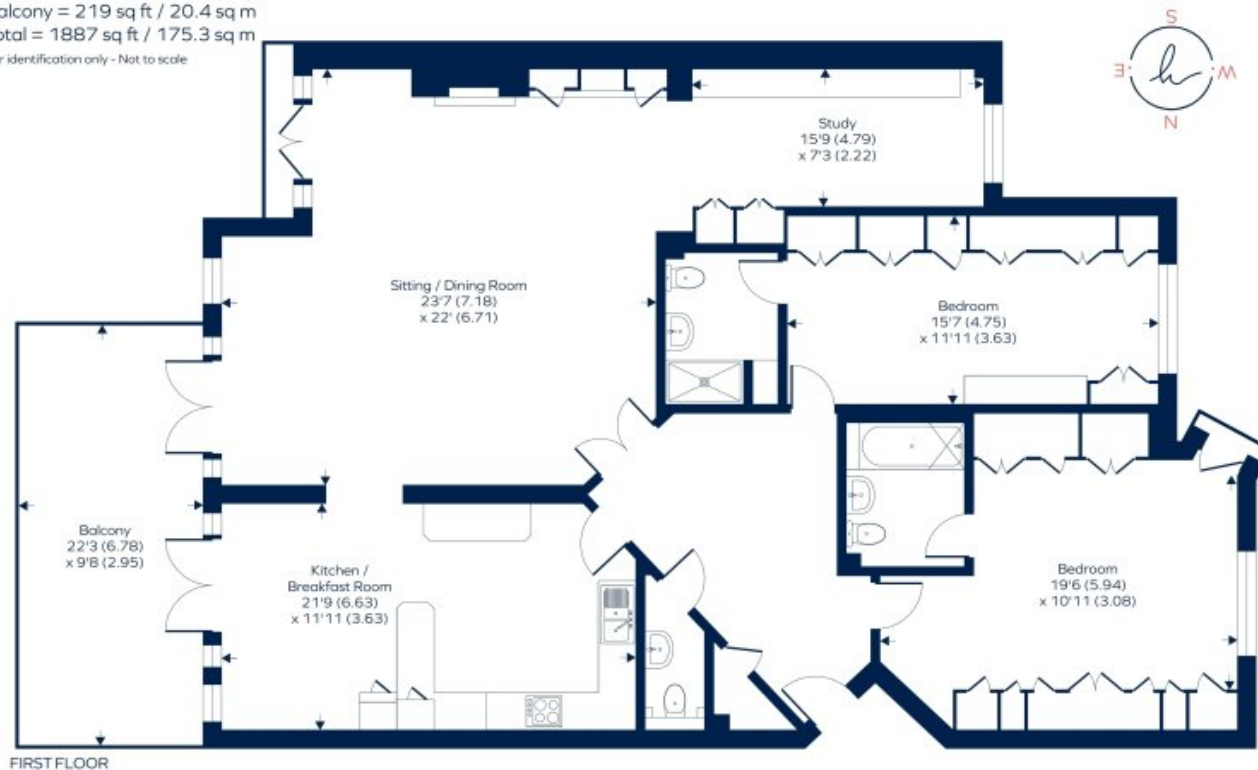
(£925,000)

Property details

Ray Mead Road, Maidenhead, SL6

Approximate Area = 1668 sq ft / 154.9 sq m
Balcony = 219 sq ft / 20.4 sq m
Total = 1887 sq ft / 175.3 sq m

For identification only - Not to scale



Floor plan produced in accordance with RICS Property Measurement 2nd Edition, incorporating International Property Measurement Standards (IPMS2 Residential). © nichecom 2025. Produced for Hamptons. REF: 1454337

Key features

- **Waterside home with expansive river view**
- **Living/dining room with study area**
- **Kitchen/breakfast room connecting to balcony**
- **Two double bedrooms**
- **Two en-suite bath/shower rooms plus a main bathroom**
- **Two parking spaces in gated underground parking**
- **expansive balcony**
- **Lift access from the parking area to the ground floor**
- **Resident's mooring rights**
- **Total of approx. 1577 sq.ft.**

Attributes

- **Apartment**

Ray Mead Road, Maidenhead, SL6

OFFERS IN EXCESS OF

£930,000

(£925,000)

2 🏠 2 🚗 1 🚗

Description

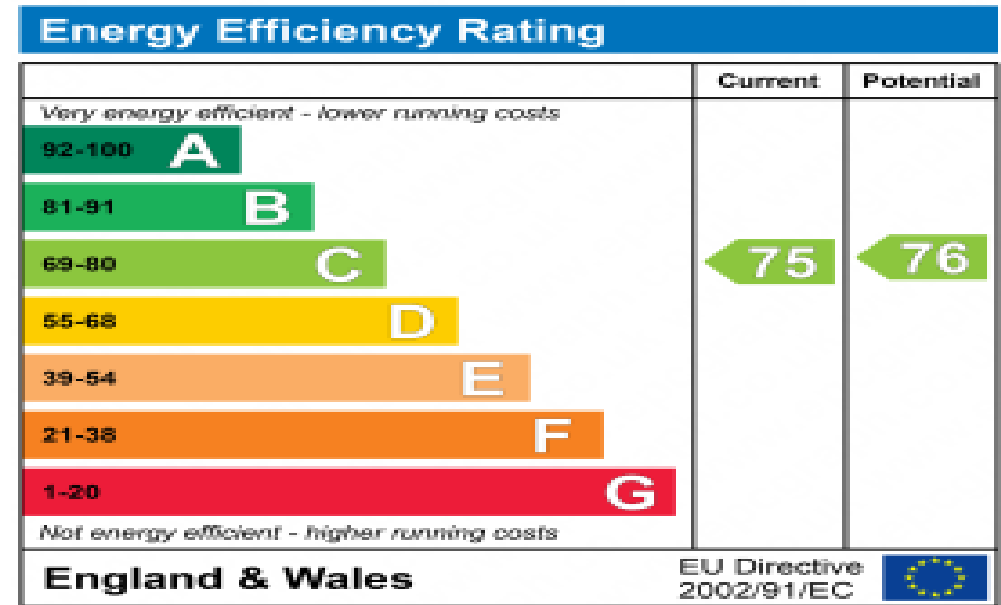
A two bedroom upper floor apartment with the living accommodation and balcony enjoying elevated views along the Thames. Occupying an enviable position within this sought-after riverside development, this first-floor apartment provides dual aspect and well-balanced accommodation ideal for both entertaining and everyday living. Lift access to the first floor opens onto the communal hallway and the entrance to the apartment is adjacent. The welcoming entrance hall offers ample storage and leads through to an exceptional reception room measuring over 35 ft in length. This elegant reception space is flooded with natural light through the full length windows and doors and enjoys delightful views towards the River Thames, with direct access onto the private balcony which is a perfect setting for relaxing or entertaining during the warmer months. There is a feature fireplace and bespoke cabinetry for displaying personal items and books and also serves to create a cozy study or reading area. The kitchen/breakfast room is thoughtfully arranged with a comprehensive range of fitted units, integrated appliances and ample work surfaces. There is plenty of space for a dining table, creating a sociable environment ideal for informal gatherings. The principal bedroom is a particularly generous double room with fitted wardrobes and an en suite bathroom. A second double bedroom, again with fitted storage, is served by a separate shower room. A cloakroom/WC is positioned off the hallway for guests. Outside The standout feature of this home is the expansive private balcony, enjoying a wonderful outlook across and along the River Thames and surrounding greenery. It provides an ideal vantage point to watch river life pass by and to enjoy the tranquil setting for which Ray Mead Road is so highly regarded. The property further benefits from secure entry and well-maintained communal areas, reflecting the quality and exclusivity of the development. with two allocated parking spaces in the gated under-croft parking area and permitted visitor parking is also available within the development. Residents have the opportunity to moor their boat alongside, on the Thames, with exclusive rights (further details can be provided). Situation Chandlers Quay is positioned by the river Thames to the east of Maidenhead centre, which has a number of amenities including a mainline train station. The promenade provides riverside walks and cafes, while the extensive shopping and leisure facilities of Maidenhead are within easy reach. Nearby leisure pursuits include a modern leisure centre and sports clubs at Braywick Park, water sports on the Thames and at Bray and Taplow lakes, a multiplex cinema and the Norden Farm Arts Centre. The M4 is easily accessible via Braywick Road and A308 providing access to the M25 motorway network, Heathrow Airport, London and the West Country. Rail services to London Paddington are available from Maidenhead and Taplow stations and the Elizabeth Line further enhances commuting to London's West End and the City. Property Ref Number: HAM-62988











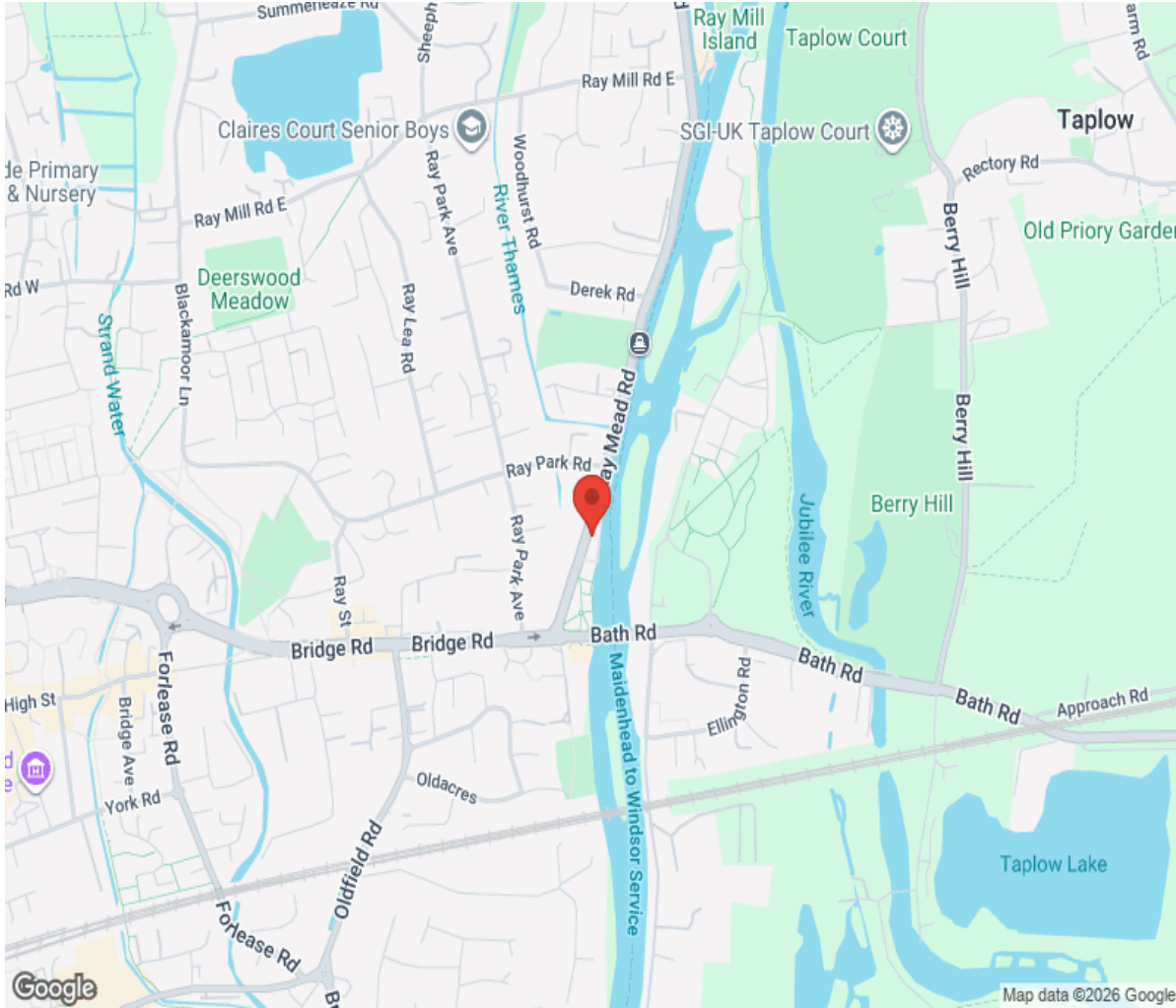
Floor plan

Approximate Area = 1668 sq ft / 154.9 sq m
Balcony = 219 sq ft / 20.4 sq m
Total = 1887 sq ft / 175.3 sq m
For identification only - Not to scale



Floor plan produced in accordance with RICS Property Measurement 2nd Edition.

Location



Hamptons

INTERNATIONAL

+44 (0)20 8618 4551

international@hamptons.co.uk

www.hamptons-international.com