

# Hamptons

INTERNATIONAL



**MARCUS GARVEY DRIVE Kingston St. Andrew**

**£740,000**

**(\$976,300)**

## Property details



---



### Key features

- **Geographic Area: Kingston 11**

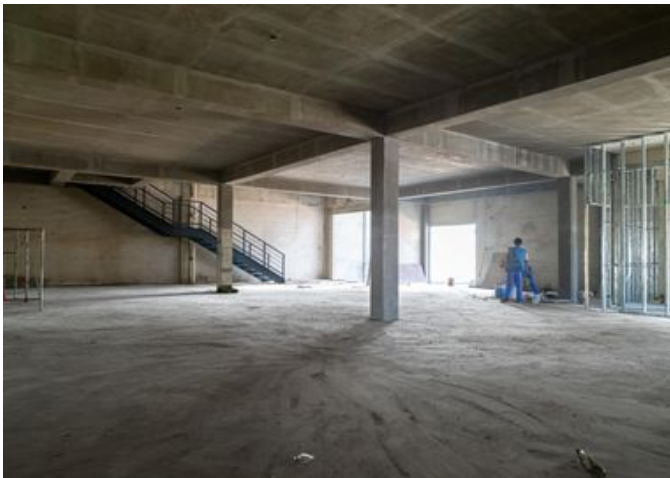
### Attributes

-  **Private parking**
-  **Commercial**

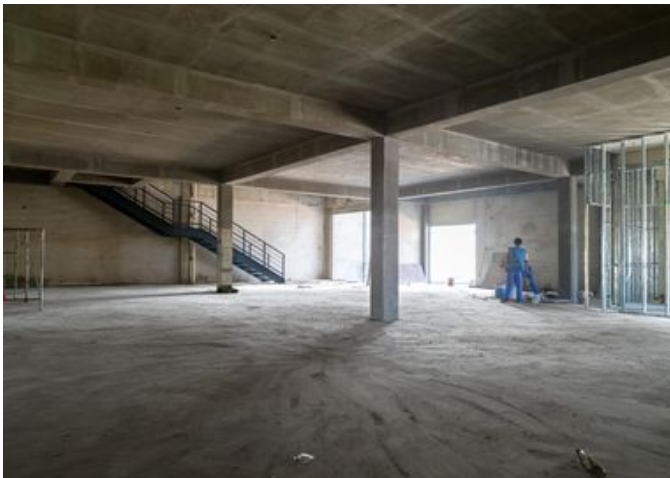
**MARCUS GARVEY DRIVE Kingston St. Andrew** **£740,000**  
(\$976,300)

## Description

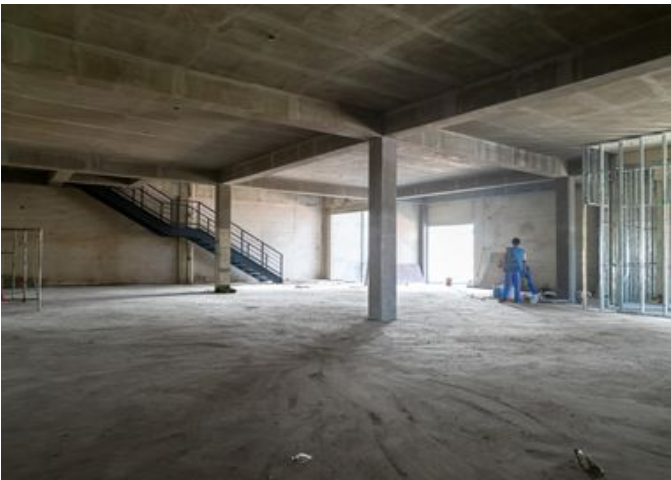
Kingston & St. Andrew Position your business for growth at Kingston Gateway, a modern commercial development located at the gateway to Port Bustamante. This well-planned mixed-use complex is designed to support efficient operations with excellent access to key transportation and logistics corridors, including Marcus Garvey Drive, Newport West, and Norman Manley International Airport. Ideal for logistics, light industrial, e-commerce, retail, and manufacturing users, the development comprises 21 thoughtfully designed units offering adaptable floor plans to suit a range of business needs. On-site features include 24-hour security, standby power, centralized waste management, professional common areas, and generous parking for staff and visitors. This unit provides approximately 4,875 sq. ft. of functional space. Scheduled for occupancy in April 2026, the project also allows for select pre-construction customizations, subject to approval, including adjustments to unit layouts and sizes. A prime opportunity to secure space in one of Kingston's emerging commercial hubs.



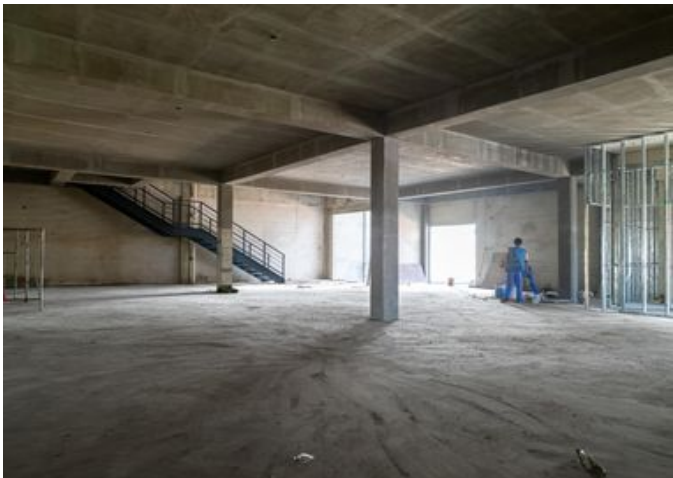




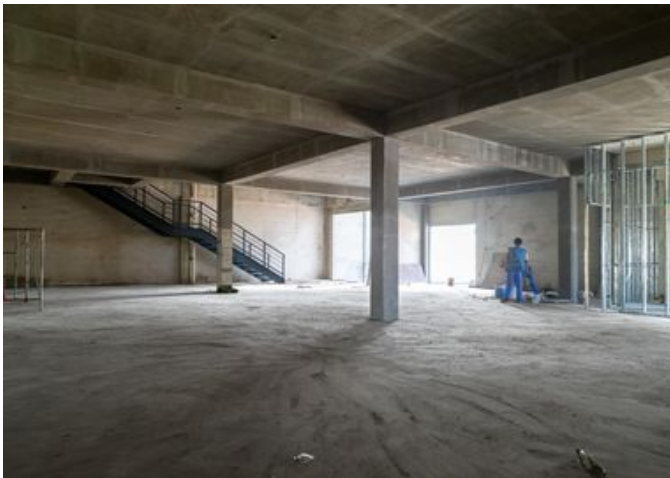




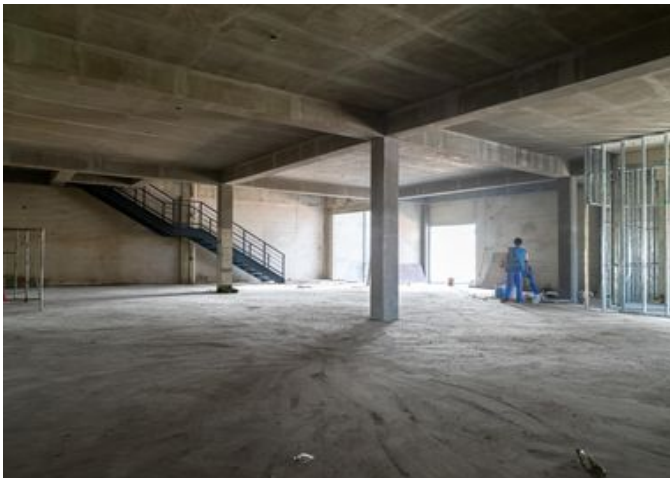














# Location

---



**Hamptons**

INTERNATIONAL

**+44 (0)20 8618 4551**

**[international@hamptons.co.uk](mailto:international@hamptons.co.uk)**

**[www.hamptons-international.com](http://www.hamptons-international.com)**