

Hamptons

INTERNATIONAL



Buckingham Mews, London, SW1E

3  3 

GUIDE PRICE

£4,000,000

(£4,000,000)

Property details



Key features

- Reception room
- Kitchen/dining room
- Three bedrooms
- Three bathrooms (All en-suite)
- Additional media room/fourth bedroom
- Guest W.C
- Study/Office
- 10-year new home structural warranty
- Private parking with electric charging
- Eco friendly solar panels.

Buckingham Mews, London, SW1E

GUIDE PRICE

£4,000,000

(£4,000,000)

3 3

Description

A brand new and generous three bedroom plus study plus snug, mews house set across three floors in a super prime and secure location, just moments from St James's Park, Green Park & Buckingham Palace. Buckingham Mews is a charming three bedroom mews house set over three floors & located in the heart of Westminster. Just a moments walk from St James's Park & Buckingham Palace. The property retains all its period charm and effortlessly blends modern day living with all the features you would expect a newbuild property to have. The house includes underfloor heating over all three floors and air conditioning to the first & second floors. There is Lutron lighting throughout which can be tailored to the new owners own specification plus an electric charging point installed at the allocated parking space directly outside the house. Sonos has been installed and can be controlled via an AV panel located in the kitchen as well as through app on mobile devices. This feeds through to the integrated speakers located in the office, the kitchen, the living area and in the media room. All three bedrooms feature en-suite bathrooms, plus there's an additional powder room on the ground floor. Solar panels have been installed on the roof to assist with the energy consumption. An air source heat pump has been installed for an efficient & environmentally friendly heating source, & there is a BPT entry phone system with audio and video. There are entry phone panels located by the front door, in the first floor kitchen and on the second floor landing, so the front door can be viewed/ answered easily from anywhere in the property.

Situation Located in the City of Westminster, the SW1 postcode covers some of London's most well-known areas, including Victoria, Westminster, Pimlico, St James's and parts of Belgravia. Situated near Buckingham Palace and close to landmarks such as St. James's Park, Green Park, and the Houses of Parliament, the location is very central and prestigious. Like many mews streets, Buckingham Mews typically features quaint, period-style properties, often characterized by cobbled streets, charming façades, and elegant homes. Properties in Buckingham Mews are often highly sought after due to their quiet charm, central location, and historical appeal. The area blends privacy with proximity to the vibrancy of central London. Transport Links in the SW1 area are well-served by London's Underground stations, including Victoria, St. James's Park, and Green Park. Victoria Station also offers national rail services. Buckingham Mews falls within one of the wealthiest districts of London, with nearby luxury shopping streets, exclusive restaurants, and cultural institutions. Overall, Buckingham Mews offers a blend of historical charm and modern luxury in the heart of one of London's most desirable areas. Property Ref Number: HAM-54932

Additional Information Local Authority: City of Westminster







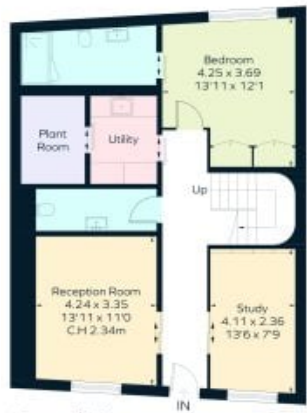




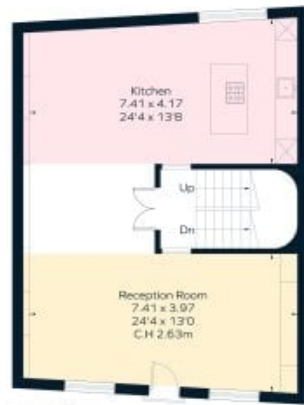




Floor plan



Ground Floor



First Floor



Second Floor

Location



This site can't load Google Maps correctly.

Do you own this website?
g.co/staticmaperror/signature



This site can't load Google Maps correctly.

Do you own this website?
g.co/staticmaperror/signature

Hamptons

INTERNATIONAL

+44 (0)20 8618 4551

international@hamptons.co.uk

www.hamptons-international.com