

Hamptons

INTERNATIONAL



Copse Hill, London, SW20

6  4  3 

GUIDE PRICE

£2,500,000

(£2,500,000)

Property details



Key features

- **5 Bedrooms**
- **2 Bathrooms**
- **2 Shower Rooms**
- **Reception Room**
- **Dining Room**
- **Study**
- **Kitchen Breakfast Room**
- **Double Length Garage**
- **Store Room**
- **135 Ft Garden**

Copse Hill, London, SW20

6 🏠 4 🚗 3 📄

GUIDE PRICE

£2,500,000

(£2,500,000)

Description

A spacious family house with a large garden that has scope for extension or redevelopment. This house on Copse Hill is an excellent family home but also offers a prime redevelopment opportunity, ideal for either a comprehensive refurbishment or a bespoke new-build project designed to maximize its potential. There has been secured pre-application approval for a 5,500 sq. f.t. home. (Please see proposed plans in photo selection). Arranged over three floors, the home is approached via a gated driveway, providing off-street parking and access to a double length garage. The ground floor features a cloakroom, a kitchen/breakfast room, a study, a dining room, and a spacious reception room that leads to the rear garden. Both the kitchen and reception room open onto a substantial, mature private garden of 135ft. The first floor includes five double bedrooms (two have en-suites), and a separate family bathroom. On the second floor, there is a principal bedroom suite. Outside The house benefits from an excellent garden with southerly aspect. At the rear of the house is a large raised terrace with steps down to the lawn. The garden extends to approx 135 ft with good screening at the rear and has borders with flowers and shrubs. To the front is a gated entrance with parking area for several cars. Situation This detached family home is ideally located on Copse Hill, offering easy access to Wimbledon Common, Wimbledon Village, and the mainline train services from Raynes Park to London Waterloo. Situated close to King's College School and Westside Tennis Club, the property enjoys a prime and sought-after location. Property Ref Number: HAM-63450























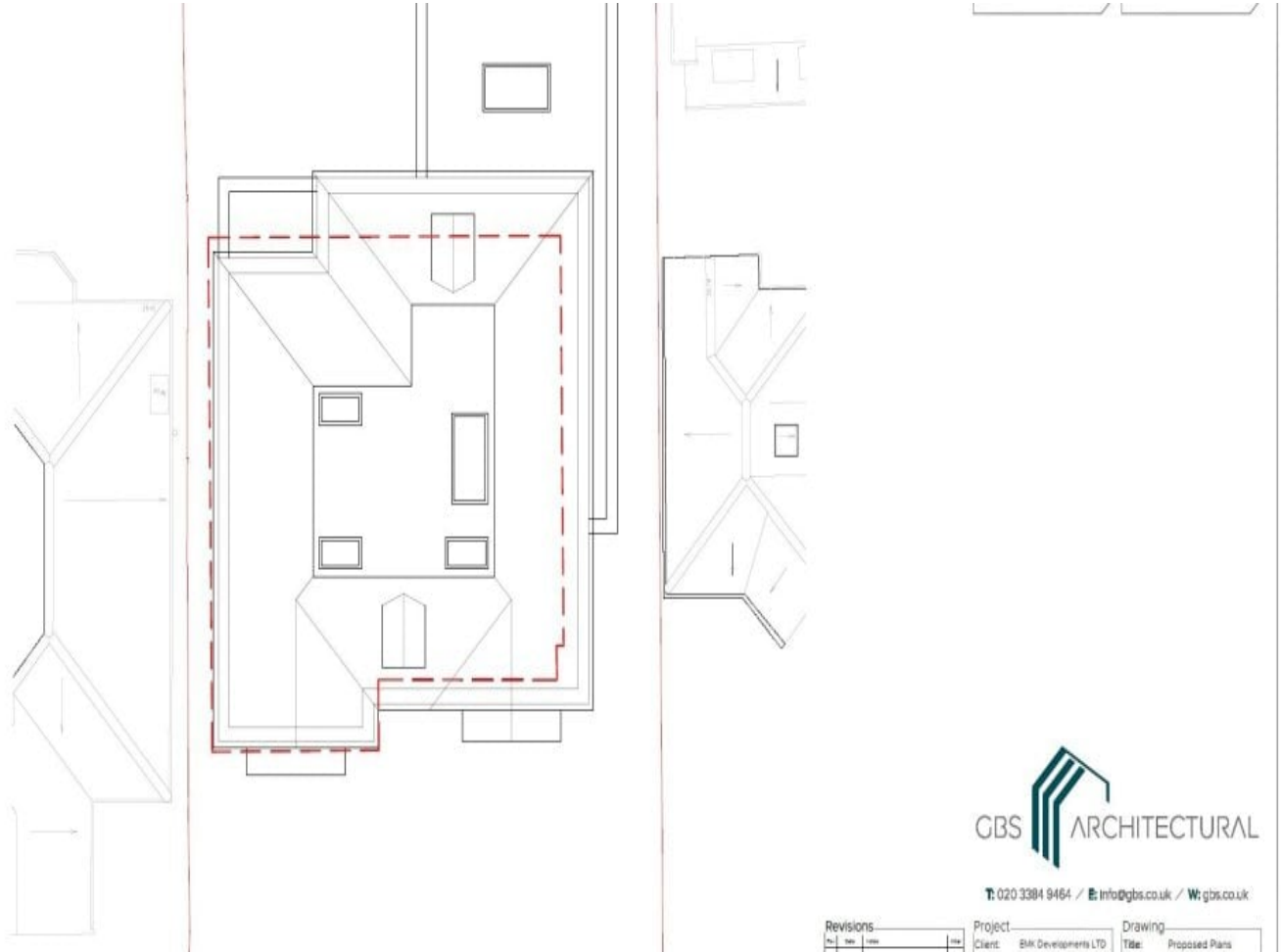


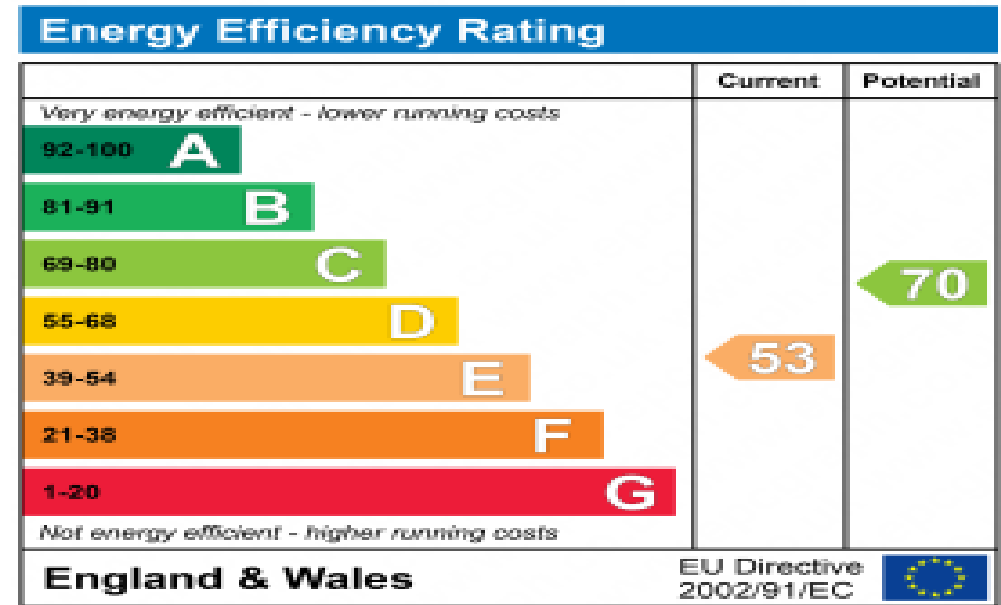












Floor plan

COPSE HILL

Approximate Gross Internal Area (including eaves/ storage) = 2425 sq. ft. (224.2 sq. m.)

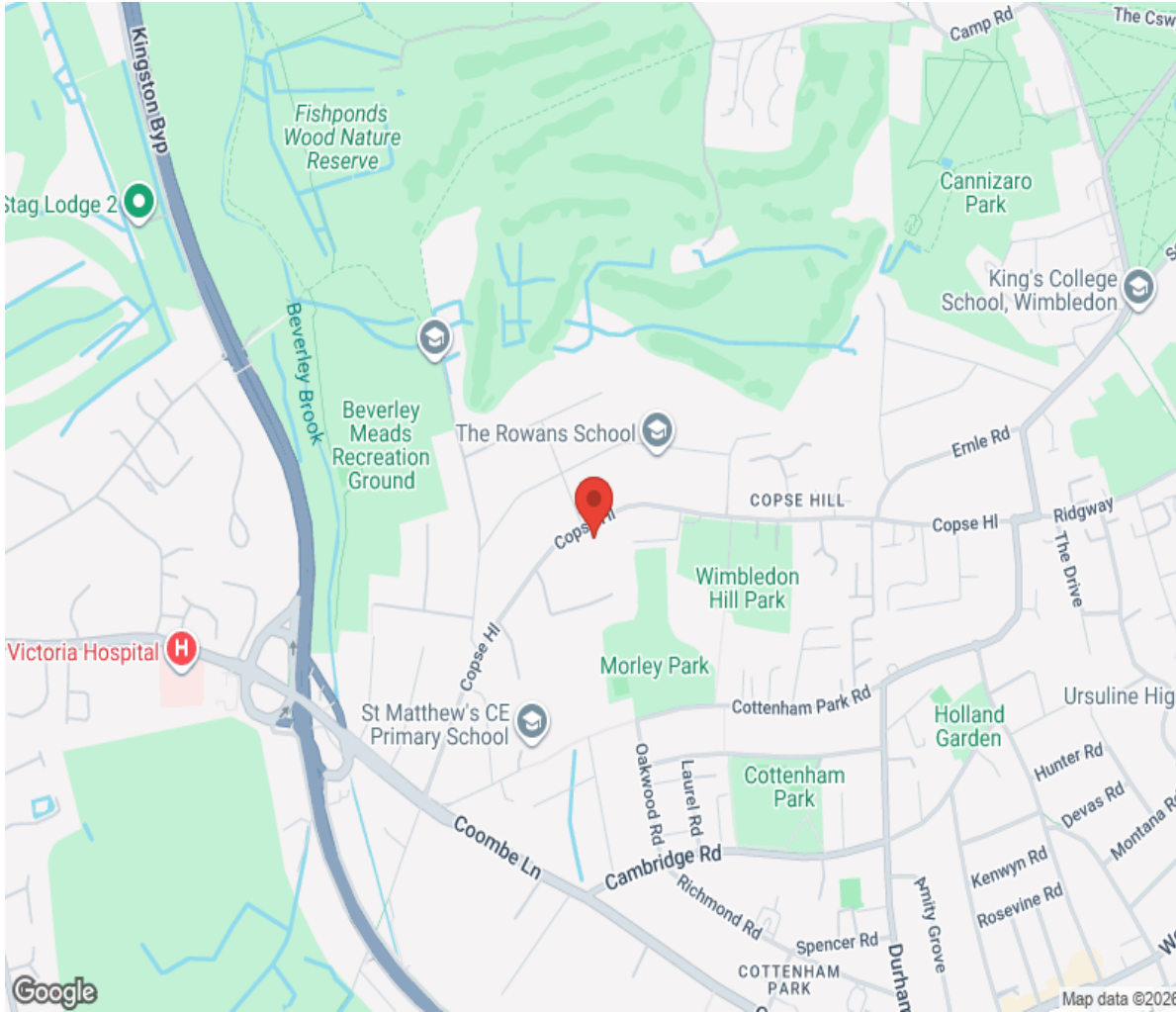
Outbuilding = 290 sq. ft. (26.9 sq. m.)

Total = 2705 sq. ft. (251.1 sq. m.)



Drawn for illustration and identification purposes only.

Location



Hamptons

INTERNATIONAL

+44 (0)20 8618 4551

international@hamptons.co.uk

www.hamptons-international.com