

Hamptons

INTERNATIONAL



South Africa, Gauteng, Six Fountains Residential Estate

4  3  2 

£160,000
(R 3,380,000)





Property details



Key features

- 24 Hour Access
- 24 Hour Response
- Guest Toilet
- En Suite
- Open Plan
- Built In Braai
- Courtyard
- Granite Tops
- Gas Hob
- Visitors Parking

Attributes

-  Swimming pool
-  Garage
-  Private parking
-  Garden

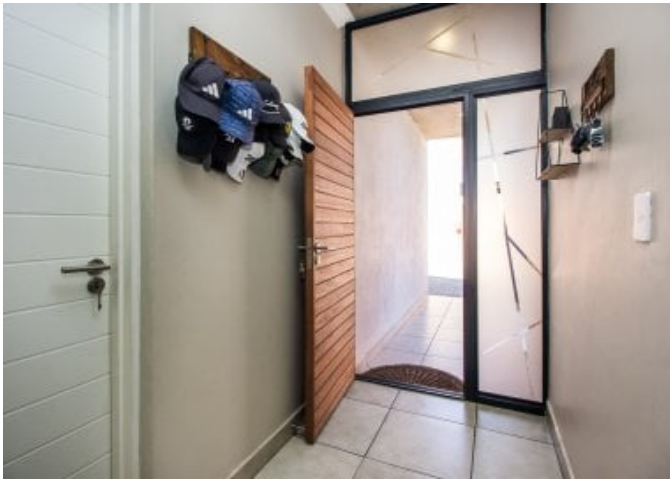
South Africa, Gauteng, Six Fountains Residential Estate

£160,000
(R 3,380,000)

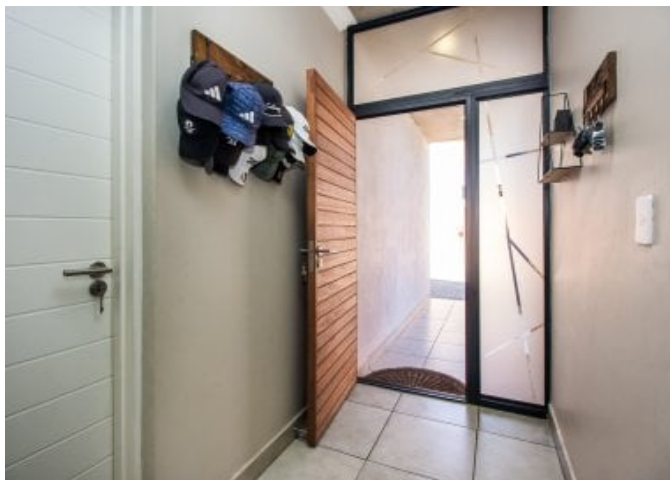
4  3  2 

Description

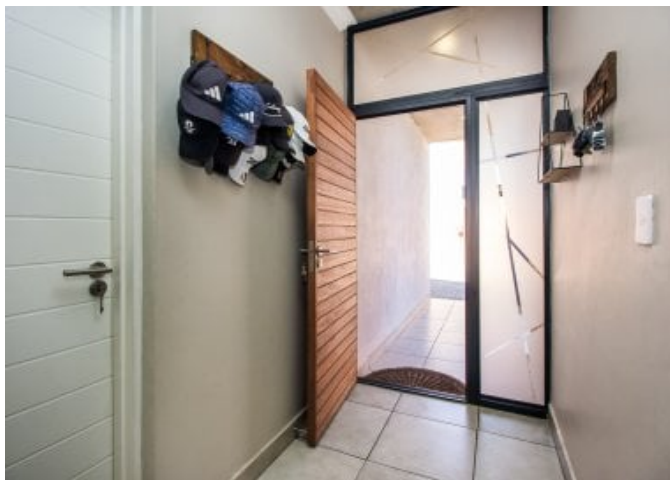
Ultra-Modern Entertainer's Dream House in Sought-after Estate!**BACK ON THE MARKET!** Dual Mandated by Seeff. This stunning, spacious, and ultra-modern home in the secure Six Fountains Estate is a true lock-up-and-go gem. Designed for entertaining and comfortable living, this property offers a fantastic lifestyle with top-tier amenities and a prime location. **Key Features:** **Bedrooms & Bathrooms:** 3 bedrooms plus a study that can be converted into a fourth bedroom. Guest toilet. Main bedroom with an en-suite bathroom located downstairs. The two other bedrooms with en-suite bathrooms are upstairs. **Living & Entertainment:** Spacious, open-plan living area with a dining room, lounge, and a large, enclosed patio. The enclosed patio features stacking doors, a built-in braai, and overlooks a private splash pool and small, manageable garden. A separate courtyard with a washing line provides practical space. **Kitchen:** Modern kitchen with fittings for three washing appliances and a double fridge/freezer. Includes granite tops, a gas stove and an electric oven. **Energy & Utilities:** Prepaid power and water. DSTV satellite dish included. Equipped with a 1000L water tank, 8 solar panels, and an 8.2kVa battery for uninterrupted power supply. This is a sectional title home, so the levy also includes building maintenance, building insurance, estate maintenance, estate security & garden services. **Parking & Storage:** Spacious double garage. One additional parking bay adjacent to the house. Visitor's parking close-by. **Estate & Location:** Located in the prestigious Six Fountains Estate, known for its 24/7 top-level, access-controlled security. The estate offers beautiful walkways, tranquil dams stocked with fish, rich birdlife, parks, and picnic spots. Conveniently located close to the N4 and other main roads, excellent schools, shopping centres, and various amenities. This property is perfect for a family seeking a secure, modern, and low-maintenance lifestyle. Contact Us for a Viewing!



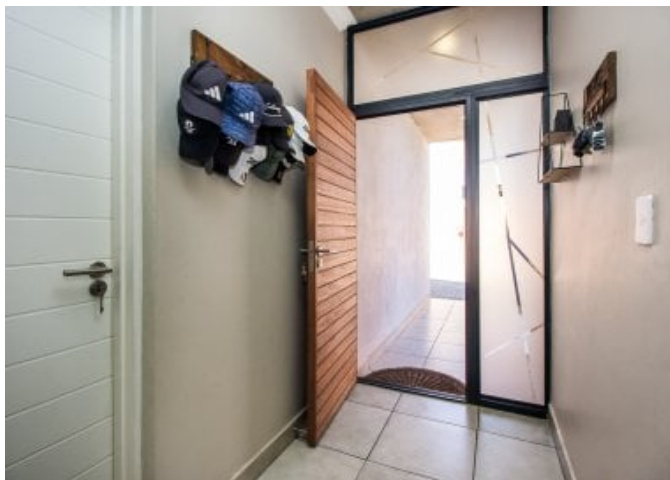




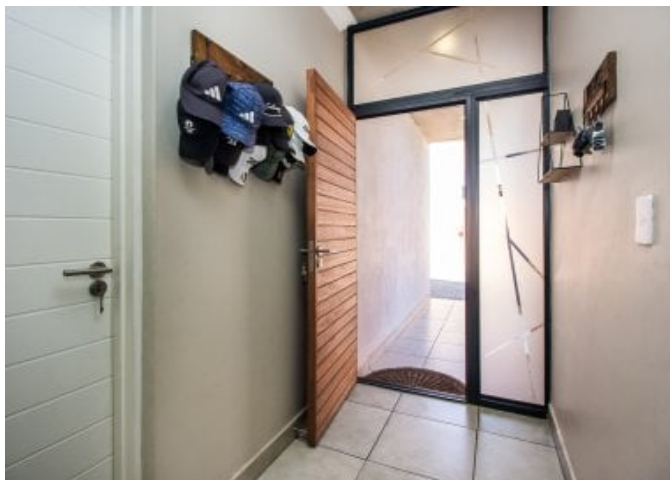




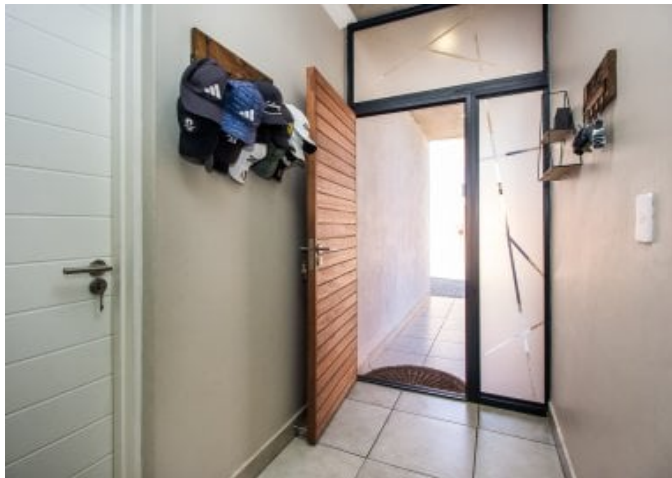




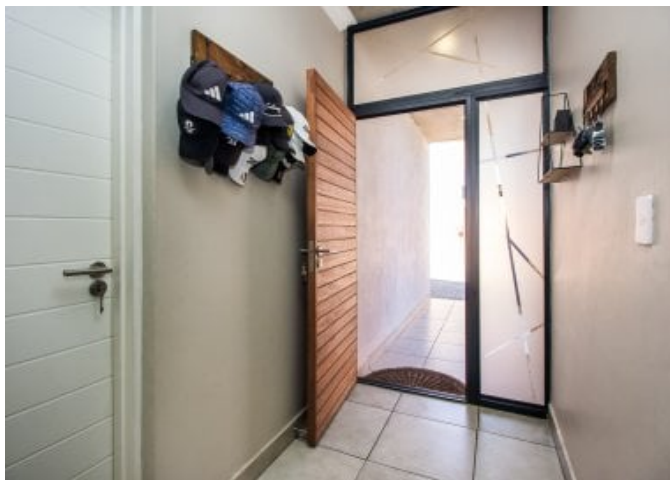




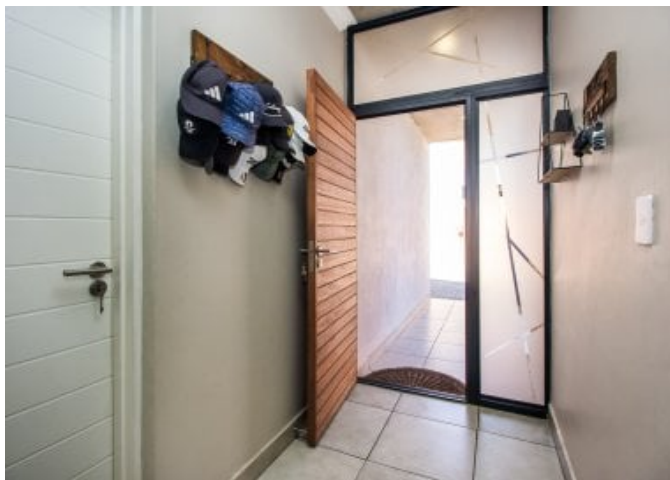




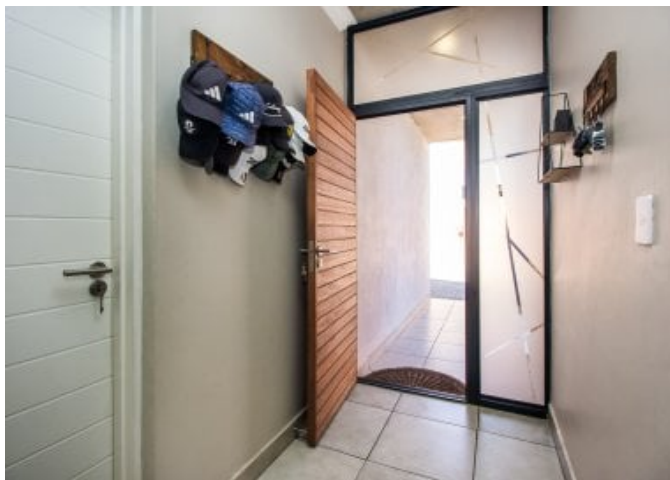




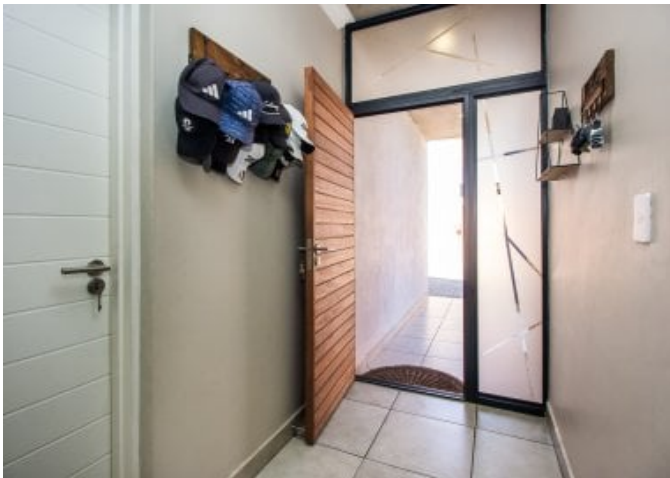














Location



Hamptons

INTERNATIONAL

+44 (0)20 8618 4551

international@hamptons.co.uk

www.hamptons-international.com