

Hamptons

INTERNATIONAL



Glenbrook House and Mews, Enniskerry, Co Wicklow, A98N265

5  4  5 

GUIDE PRICE

£2,270,000

(€2,600,000)

Property details



Attributes

-  **Tennis court**
-  **Swimming pool**
-  **Private parking**
-  **With land**
-  **Garden**

Glenbrook House and Mews, Enniskerry, Co Wicklow, A98N265

GUIDE PRICE
£2,270,000
(€2,600,000)

5  4  5 

Description

5 bedroom house for sale DNG are delighted to present Glenbrook House and Mews to the market. Originally constructed in 1830 and further extended in 1845, Glenbrook House is a picturesque, L-plan house with many period features including roughcast façade, sash and case windows, a gabled entrance porch at the intersection of the L-plan and distinctive chimney pots with a moulded honeycomb pattern. Nestled midst c.2 acre of exceptionally private grounds in the heart of Enniskerry Village, Glenbrook House and Mews is a very fine residence which perfectly blends old world charm with the ultimate location, rendering this the ideal family home and nature-blessed retreat for any prospective buyer. The property is discretely tucked away in an elevated woodland setting, behind a screen of mature trees within 100m of Enniskerry Village square, and boasts among other features, a magnificent heated outdoor swimming pool and tennis court. The beautiful grounds at Glenbrook are both mature and diverse, with different levels connected by winding gravel paths and featuring a pretty brook, which creates a special magical setting. Gardens: The breathtaking gardens of Glenbrook House and Mews, which are approached through electric security gates and feature a sweeping gravel driveway, create a wonderful outlook for this very fine period home. Carefully planted with a variety of roses, magnolias, camellias, wisteria and an array of other flowers and plants, these elements are protected by a variety of mature evergreen and deciduous trees which also provide residents with total privacy. There are several garden areas that offer a range of different uses: a lovely central pathway shaded by a clematis clad pergola, a vegetable garden with elevated raised beds; a fruit garden with a variety of fruit trees; a low maintenance lush lawned area bordered by blooming flower beds, all offering beautiful recreational spaces for a family to run and play. There is also a large original garden shed and several potting sheds for additional storage and workspaces. In addition, there is a separate vehicular entrance from the cul de sac below the property, which provides useful additional access. The gardens have been lovingly maintained throughout the years and are well stocked with a wide variety of flowers, plants and trees which come to life in an array of colour and scents, depending on the season. Enjoy a moment resting with a good book under a magnolia tree or take an early morning dip in the heated swimming pool or indeed challenge your friends to a game of tennis on your own private tennis court; this home truly caters for every need. Glenbrook House c. 343.5 sq m / 3698 sq ft: The bright and spacious accommodation of Glenbrook House comprises a welcoming entrance hallway with an intricately carved oak staircase leading to the first floor. There is a triple aspect drawing room featuring an attractive marble fireplace with cast iron inset. From here there is access to the swimming pool terrace, creating the ideal setting for entertaining. From the entrance hall, we enter the large L-shaped dining room, ideal for large family gatherings and also featuring a period marble fireplace. There are two very useful rooms accessed off the dining room, a library fitted with extensive bookcases and an office, ideal for a work-from-home hub. Continuing through double doors, we enter a very pleasant, sun-drenched sitting room, which features a raised fireplace on granite stone hearth. Off of this room, there is another room which could also be utilised as a guest bedroom as it features an ensuite shower room/guest WC. They say that the heart of the home is the kitchen and at Glenbrook, this is not an exaggeration as the kitchen cum breakfast room is in a modern fully glazed sunroom extension, positioned to maximise the natural light throughout the day and resulting in a light filled, warm and welcoming centre of the home. This sunroom has a glazed pitched roof overhead, which frames the soaring greenery of the surrounding trees, making this the perfect private space to gather and relax. It also overlooks a delightful walled courtyard garden featuring raised beds and climbing hydrangeas, ideal for al fresco dining. The exceptionally well-equipped kitchen is complete with high quality, solid wood, in-frame kitchen units, painted in dark grey and finished with a natural butcher block countertop and featuring a Stanley range. Off the kitchen is a very generous utility/boot room with additional storage units, sink and plumbed for washing machine/dryer. There is also separate access to the walled garden from the utility/boot room. A charming feature of Glenbrook is the winding curved hallway which connects the sitting room to the main entrance hall. The ornate oak staircase leading to the first floor features a picture window on the return, which frames a view of the outdoor swimming pool. On the first floor, there is a spacious master suite with ensuite bathroom and ample built in storage. Bedroom 2 is a good-sized double bedroom with ensuite bathroom and Bedroom 3 is a large dual aspect double bedroom with built in wardrobes. Bedroom 4 is a double bedroom located to the rear of the house. There is also an additional shower room, a walk-in laundry closet and a separate WC at first floor level. Glenbrook Mews - c. 76.2 sq m / 820 sq ft: Glenbrook Mews is a detached mews located on the grounds of Glenbrook House. This charming addition to the property provides additional accommodation for visiting

family/friends or for an au-pair if required. On the ground floor of the Mews, there is an entrance porch with good storage, leading into a very spacious open-plan kitchen/dining/living area with fitted kitchen units, tiled kitchen floor and corner fireplace with painted cast iron fire surround. Upstairs there are 2 bedrooms and a family bathroom. There is a gravelled courtyard located to the front of the mews which is accessed from the driveway and provides ample parking for guests. There are a number of sheds located adjacent to the mews which provide useful storage for tools and gardening equipment. Location: Positioned in the heart of Enniskerry Village, Glenbrook House and Mews is close to a wide selection of local shops, restaurants, cafes, boutiques and other essential amenities. Enniskerry Village is located at the foothills of the Wicklow Mountains, where there is a myriad of woodland hikes to enjoy, along with the world famous Powerscourt Estate & Gardens which is literally on your doorstep. Nearby there is a very good selection of primary and secondary schools to choose from that include Powerscourt National School and St Gerard's. The location offers the best of rural living - serenity, privacy, a clean and beautiful natural environment, while not sacrificing any of the











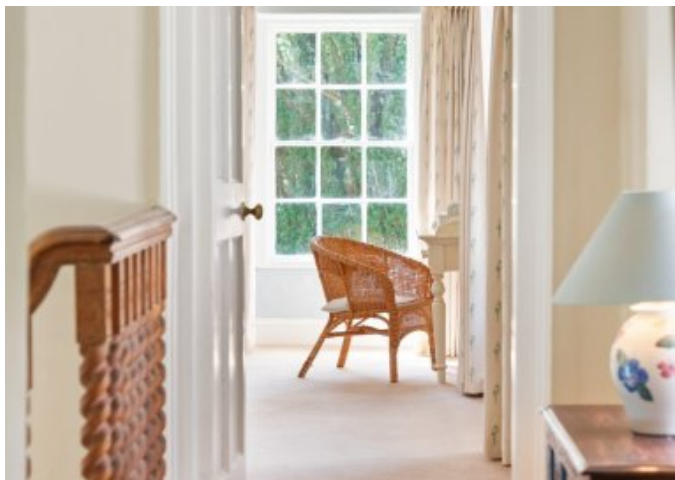














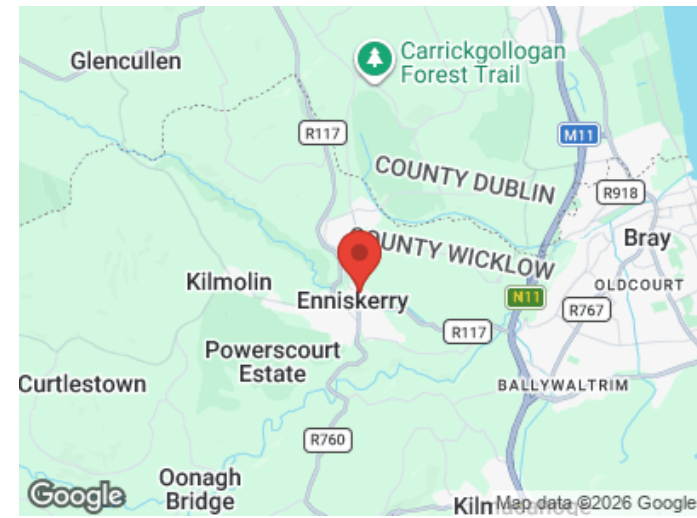
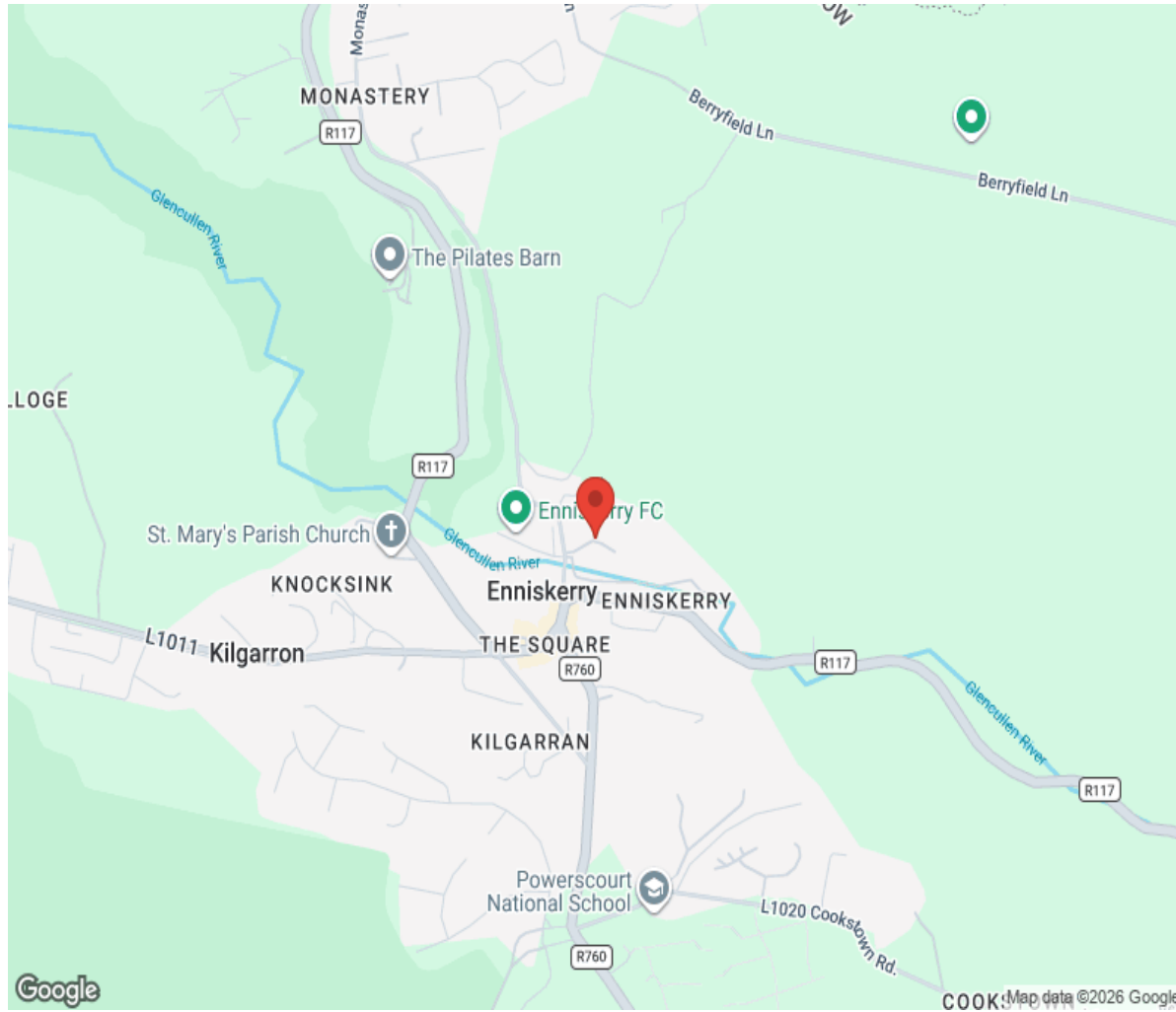




Floor plan



Location



Hamptons

INTERNATIONAL

+44 (0)20 8618 4551

international@hamptons.co.uk

www.hamptons-international.com