

Hamptons

INTERNATIONAL



Tankerville Road, London, SW16

4 🏠 2 🚗 2 📧

£1,250,000

(£1,250,000)

Property details



Key features

- **Four Bedroom Family Home**
- **2086 Sq Ft**
- **Two Bathrooms & Additional WC**
- **Cellar Storage**
- **Scope To Develop The Loft Space (5**
- **Large Rear Garden**
- **Immaculately And Tastefully Finish**
- **Moments From Streatham Common**
- **Close To A Number Of Well-Regarde**

Tankerville Road, London, SW16

£1,250,000

(£1,250,000)

4 🏠 2 🚗 2 📧

Description

A truly charming four bedroom family home with large rear garden located on a popular tree-lined street in SW16 with scope to develop the loft space (STPP)Hamptons have pleasure in offering to the market this particularly elegant semi-detached Victorian house, boasting over of 2,000 square feet of internal space. Accommodation comprises two large reception rooms, a remodelled kitchen-dining room (that has been extended both to the side and rear), four generous bedrooms, two family bathrooms, guest cloakroom, cellar, and separate utility room. The entire house carries a genuine sense of period charm throughout with careful attention paid to the refurbishment and remodelling to retain period features, whilst keeping the aesthetic tastefully in keeping with the style of the original building. The ground floor has been extended to the rear and side creating a generous living and entertaining space and in the future the loft can be converted into another one/two bedrooms, subject to the usual permissions. Situation Tankerville Road is a sought-after tree-lined street in Streatham with imposing Victorian architecture. The house enjoys a healthy blend of tranquillity on the road itself, whilst having the convenience of being a stone's throw away from many popular shops, schools, cafes, restaurants and transport links. Both Streatham Common Station and indeed the Common itself are just moments from this truly charming family home. Property Ref Number: HAM-58542



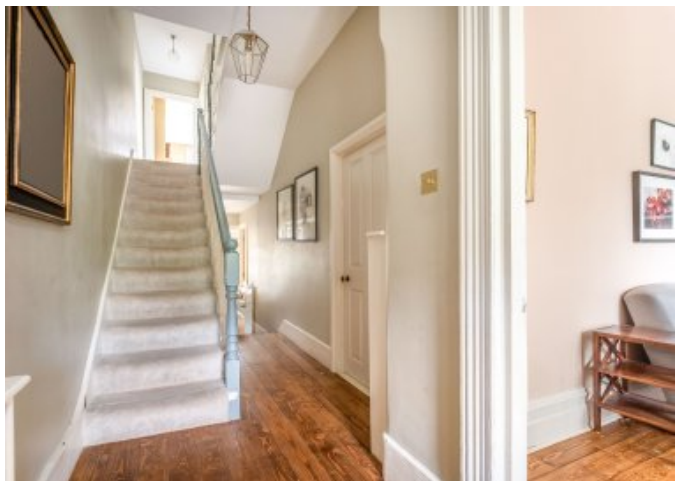












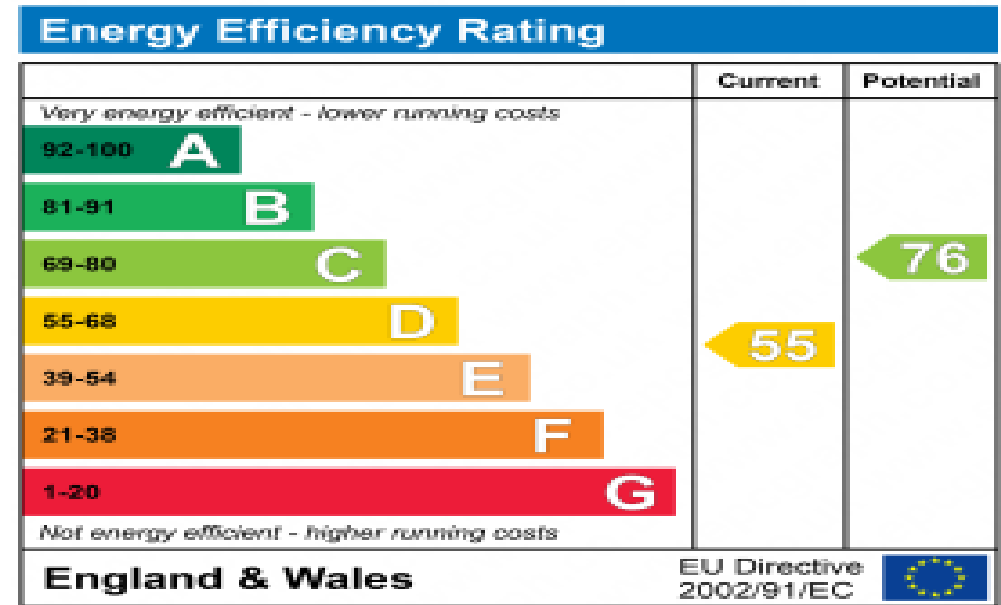












Floor plan

LAUNDRYVILLE ROAD

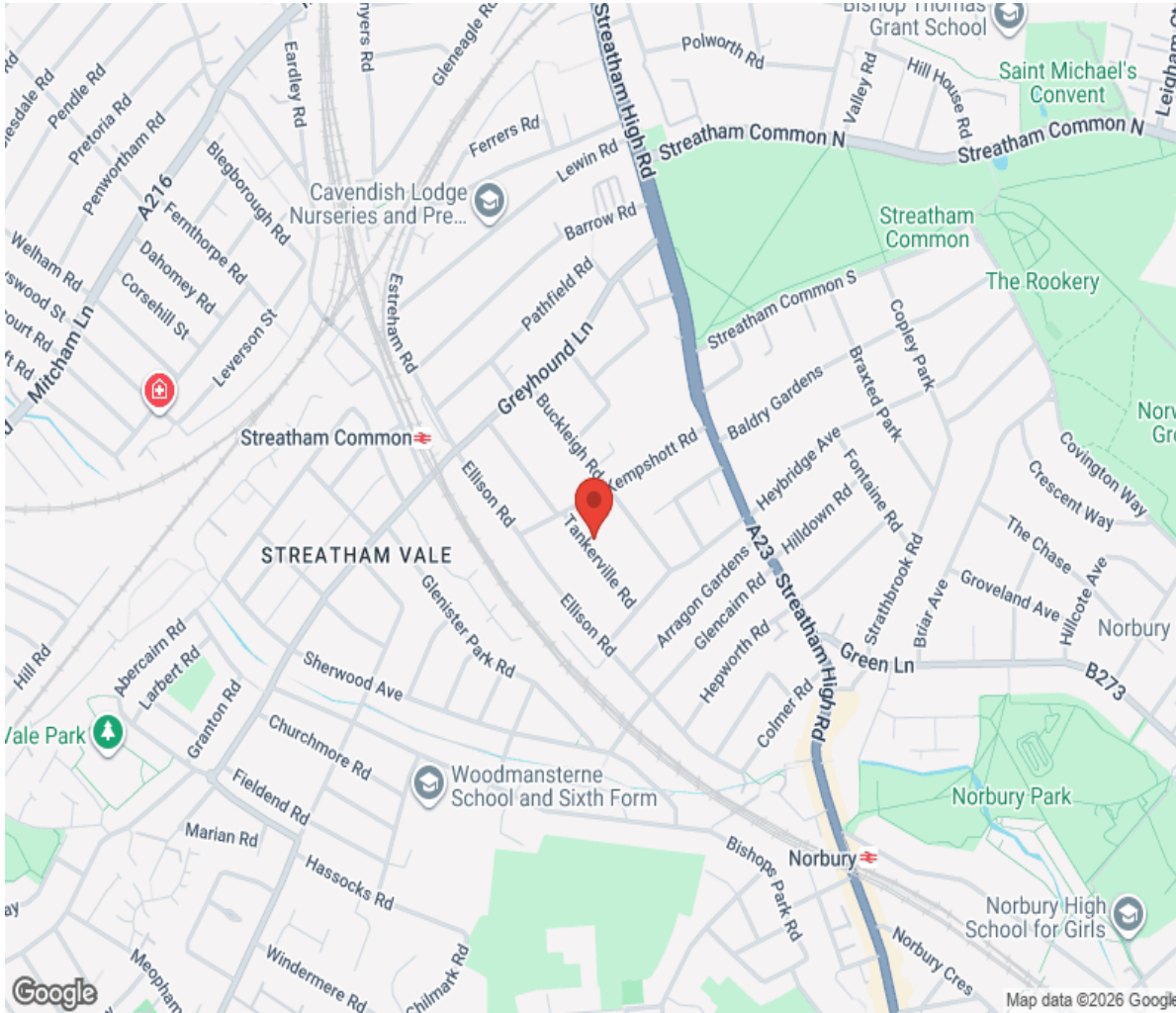
Approximate Gross Internal Area
 Lower Ground Floor = 130 sq. ft. (12.1 sq. m.)
 Ground Floor = 1071 sq. ft. (99.5 sq. m.)
 First Floor = 672 sq. ft. (62.4 sq. m.)
 Second Floor = 213 sq. ft. (19.8 sq. m.)
 Total = 2086 sq. ft. (193.8 sq. m.)



Lower Ground Floor Ground Floor

This plan is for layout guidance only. Not drawn to scale unless stated. Windows and door openings are approximate. All fit every corner to follow in the construction of this plan, please check all dimensions, shapes and compass bearings before making any decisions where space may be.

Location



Hamptons

INTERNATIONAL

+44 (0)20 8618 4551

international@hamptons.co.uk

www.hamptons-international.com