

Hamptons

INTERNATIONAL



Onslow Gardens, London, N10

5 🏠 3 🚗

OFFERS IN EXCESS OF

£2,750,000

(£2,750,000)

Property details



Key features

- 4-5 bedrooms
- 2 bathrooms
- retractable glass roof
- stunning garden that backs onto Q1
- off street parking

Onslow Gardens, London, N10

5 🏠 3 🚗

OFFERS IN EXCESS OF
£2,750,000
(£2,750,000)

Description

Semi-detached 4/5 bed period house with off street parking. The beautiful landscaped garden backs onto Queens Wood that provides a stunning view. Amazing interiors that feature double height ceiling and retractable glass roof over the dining area. Close to Highgate Tube and vibrant high street in both Highgate Village and Muswell Hill Broadway. A semi-detached period home renovated throughout with incredible design features. These include a retractable roof, double height ceilings, glass balcony and several picture windows. The windows capture the breathtaking views over Queens Wood that the private south facing gardens backs directly onto. The front reception retains the original stained glass windows and is laid with a quality wood floor that flows onto the dining area that has a retractable roof, creating alfresco dining with a click of a button. The bright and spacious kitchen fitted with stunning high gloss units is installed with top of the range appliances, including a chef style Wolf oven. The kitchen leads out onto the terraced patio that has stairs leading down to the beautiful garden. A downstairs w.c is located off the hall, there are stairs leading down ground floor to the plant room, utility room and to the large family room that has double height ceilings and underfloor heating laid under the stunning white floor. Floor to ceiling sliding doors leads out to the bright patio that lead onto the large lawn that is planted with mature shrubs and trees and backs directly onto Queens Wood. There is a large study located off of the patio area that could be used as a gym or 5th bedroom. The first floor has double bedroom and large bathroom. The premier bedroom has converted 3 rooms to create a stunning suite that includes a large dressing area and stylish en-suite. The top floor has two double bedrooms and shower room. Please note the garden patio and kitchen breakfast bar photos have been digitally enhanced. Outside a beautifully landscaped south facing garden with stone patio, ideal for Al-fresco dining, the raised lawn has mature trees and plants in the borders, providing year round interest. Directly backing onto Queens Wood that offers the most stunning back drop. Situation One of Muswell Hills most sought after and desirable roads, this pretty tree lined street backs directly onto Queens Wood and is opposite Highgate Wood. A short distance to both Highgate Village and Muswell Hill Property Ref Number: HAM-63691















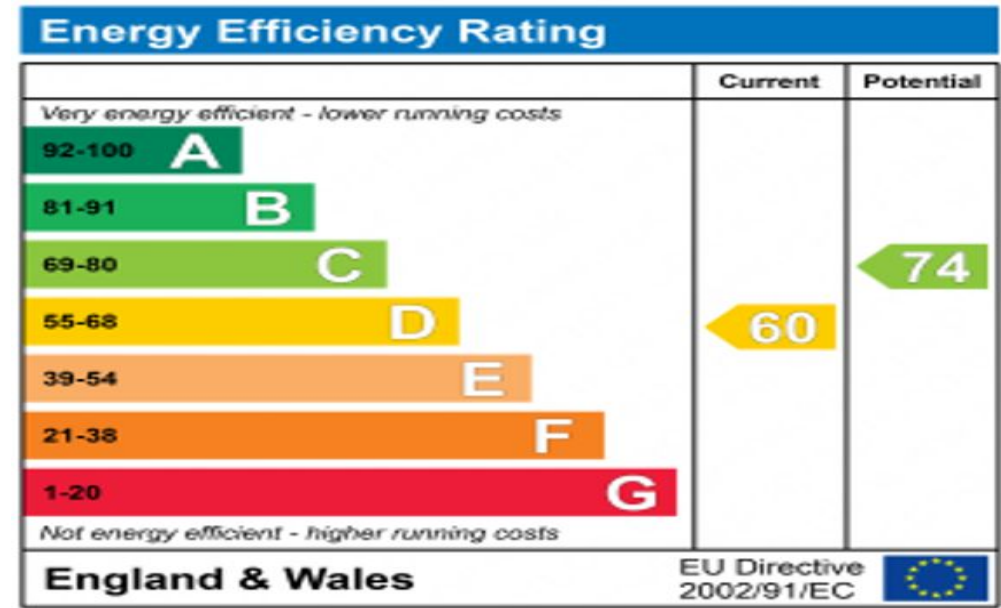






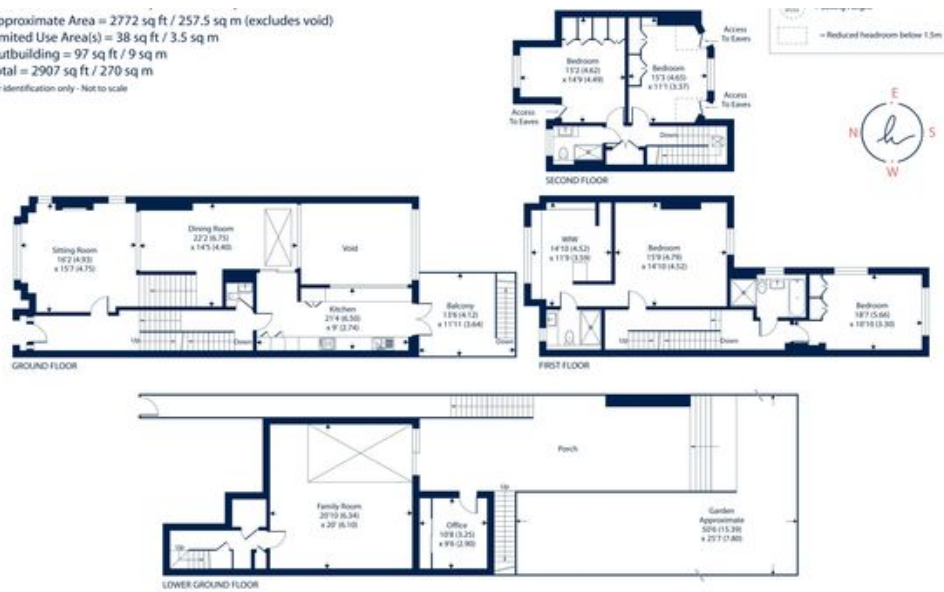






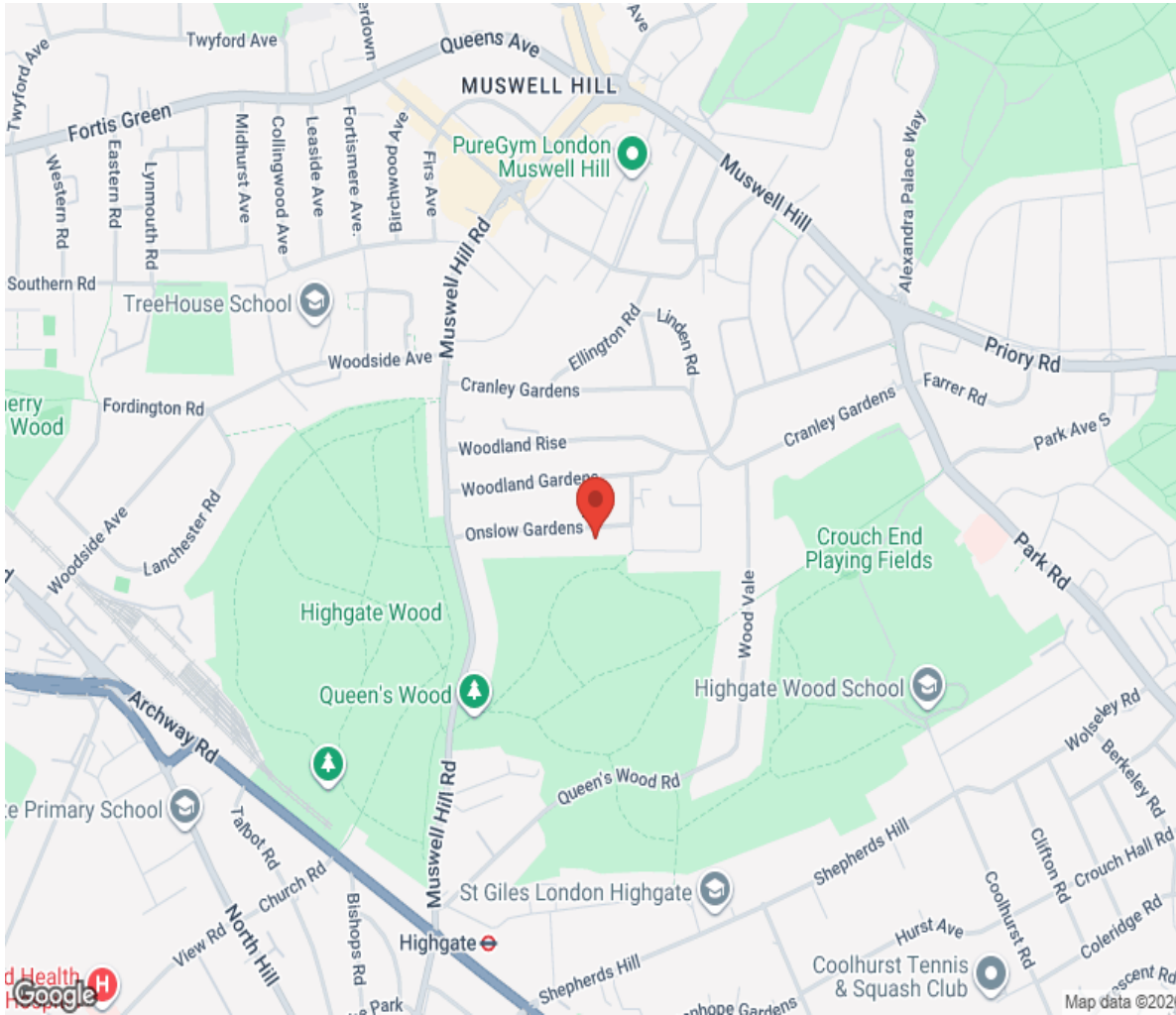
Floor plan

Approximate Area = 2772 sq ft / 257.5 sq m (excludes void)
 Limited Use Area(s) = 38 sq ft / 3.5 sq m
 Outbuilding = 97 sq ft / 9 sq m
 Total = 2907 sq ft / 270 sq m
 For identification only - Not to scale



Floor plan produced in accordance with RICS Property Measurement 2nd Edition.

Location



Hamptons

INTERNATIONAL

+44 (0)20 8618 4551

international@hamptons.co.uk

www.hamptons-international.com