

# Hamptons

INTERNATIONAL



**Dukes Wood Drive, Gerrards Cross, SL9**

7  5  2 

OFFERS IN EXCESS OF

**£2,500,000**

**(£2,500,000)**

## Property details

---



### Key features

- **Gated**
- **7 Bedrooms Sought after Road**
- **Modernised**
- **Balcony**
- **Large Garden**

## Dukes Wood Drive, Gerrards Cross, SL9

OFFERS IN EXCESS OF  
**£2,500,000**  
**(£2,500,000)**

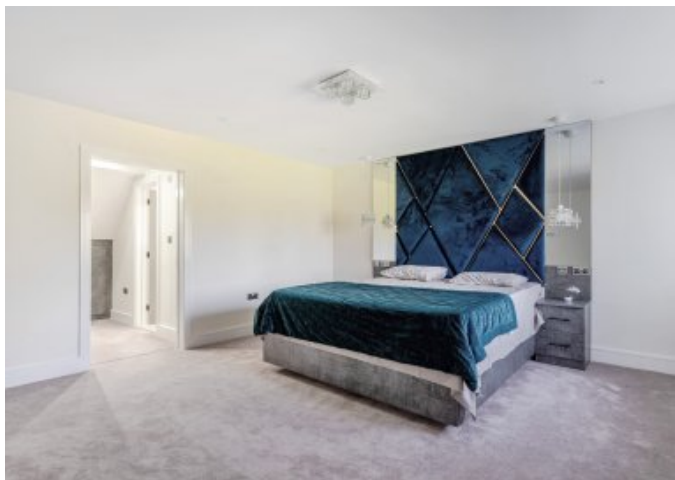
7 5 2

## Description

Situated on one of Gerrards Cross's most highly sought-after roads, this impressive seven-bedroom family home on Dukes Wood Drive is coming to the market having been thoughtfully modernised throughout. Offering generous proportions, contemporary living spaces, and a beautifully landscaped setting. The property opens into a welcoming entrance hall leading through to a modern kitchen diner, ideal for everyday living and entertaining. There is a spacious sitting room, a separate family room, and a ground-floor en-suite bedroom suitable for guests or flexible use. The ground floor also benefits from a separate spice kitchen and an integral double garage. The first floor offers six well-proportioned bedrooms, including a principal bedroom with a dressing room. Three bedrooms have en-suite bathrooms, and one bedroom leads to a useful bonus room that could serve as a playroom, study, or additional living space. A balcony completes the first floor. Outside Externally, the property is approached via secure gates leading to a large driveway. To the rear, the home enjoys a generous and beautifully green garden. Situation Gerrards Cross town offers a range of shopping facilities, including Waitrose and Tesco, a host of independent stores, restaurants, public houses, an Everyman cinema, East & West Common and a community library. Ideal for the commuter, the motorway network can be accessed at nearby Junction 1 M40 (Denham) or Junction 2 M40 (Beaconsfield), linking to the M25, M1, M4 and Heathrow/Gatwick airports, whilst the station boasts a fast\* Chiltern Rail link to London Marylebone (\*18 minutes). Property Ref Number: HAM-64209



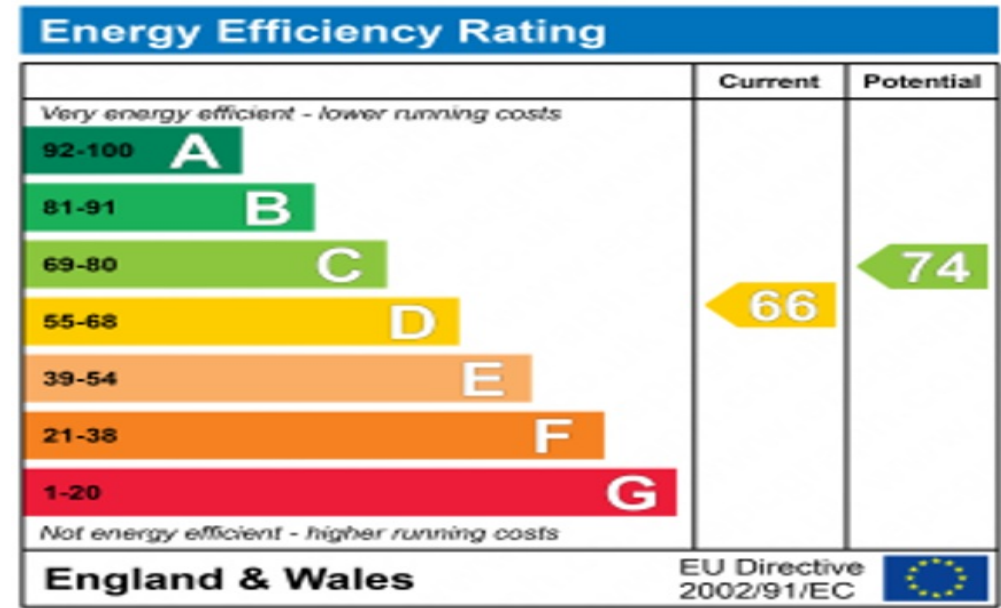












# Floor plan

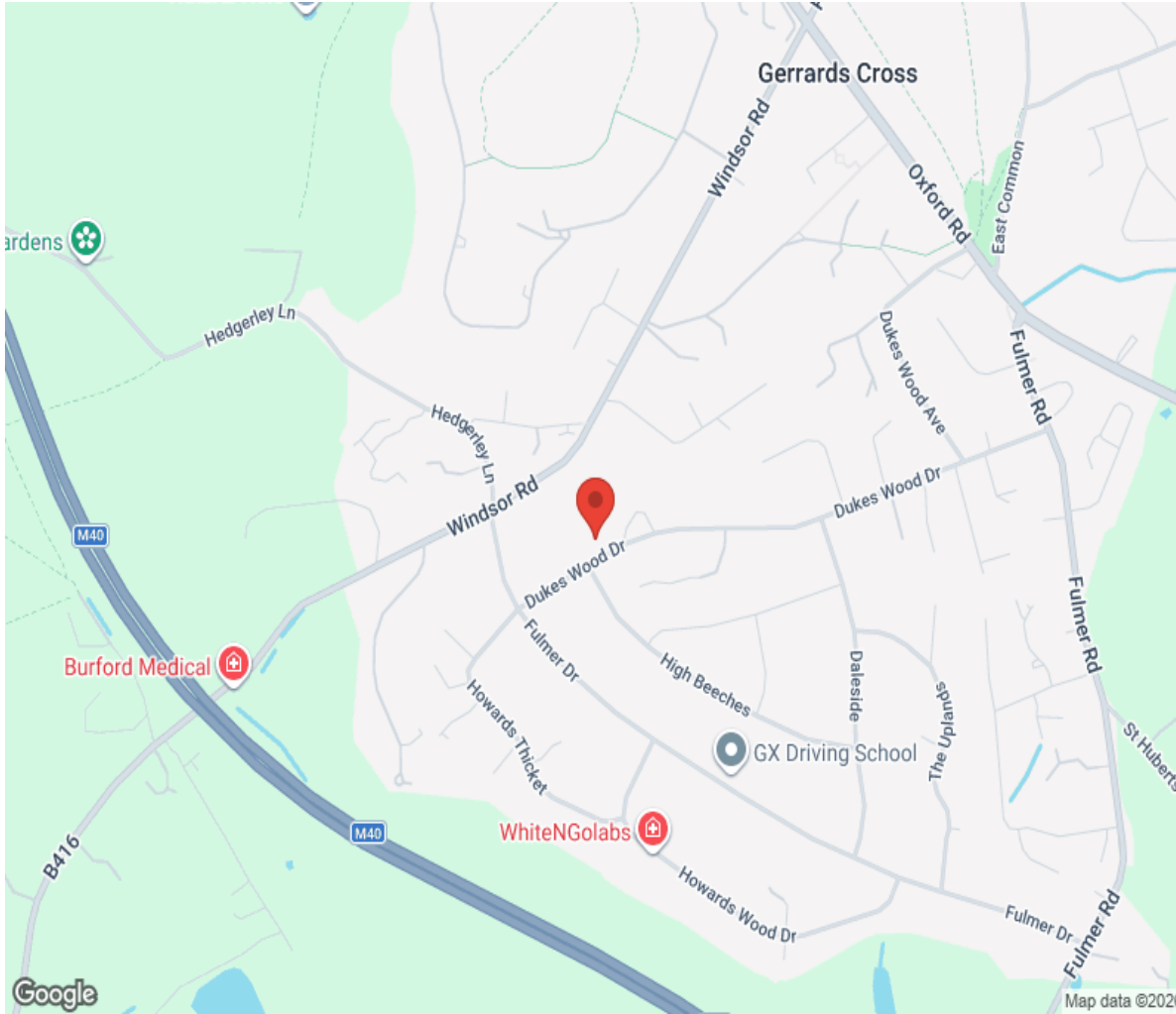
Approximate Area = 3553 sq ft / 330 sq m  
 Garage = 335 sq ft / 31.1 sq m  
 Outbuilding = 133 sq ft / 12.3 sq m  
 Total = 4021 sq ft / 373.4 sq m  
 For identification only - Not to scale



Floor plan produced in accordance with RICS Property Measurement 2nd Edition.

# Location

---



# Hamptons

INTERNATIONAL

**+44 (0)20 8618 4551**

**[international@hamptons.co.uk](mailto:international@hamptons.co.uk)**

**[www.hamptons-international.com](http://www.hamptons-international.com)**