



Hamptons

INTERNATIONAL



Edith Grove, London, SW10

3  2  1 

GUIDE PRICE

£1,350,000

(£1,350,000)

Property details



Key features

- **Three-bedroom apartment**
- **Principal bedroom with en-suite**
- **Separate family bathroom**
- **Open-plan kitchen and reception ro**
- **Elegant period mansion block**
- **Prime Chelsea location**
- **Excellent transport links**
- **Close to King's Road amenities**

Attributes

- **Apartment**

Edith Grove, London, SW10

GUIDE PRICE

£1,350,000

(£1,350,000)

3 2 1

Description

Nestled in the heart of Chelsea, Editha Mansions presents an exceptional opportunity to acquire a beautifully appointed residence within one of London's most desirable neighbourhoods. This elegant apartment combines timeless period charm with modern comfort, offering a refined living experience just moments from the vibrancy of King's Road. Extending to just over 1,000 sq ft, the property offers a well-balanced and thoughtfully designed layout. At its heart is a bright and spacious open-plan kitchen and reception area, ideal for both contemporary living and entertaining. Large windows invite an abundance of natural light, while high ceilings and classic architectural detailing enhance the sense of space and elegance. The modern kitchen is stylishly fitted with sleek cabinetry and integrated appliances, seamlessly flowing into the living area to create a sociable and functional environment. The apartment comprises three well-proportioned bedrooms, including a principal bedroom with a private en-suite bathroom. The remaining bedrooms are served by a separate, well-appointed family bathroom, both finished to a high standard. Residents of Editha Mansions benefit from a well-maintained building with secure access, embodying the charm and character synonymous with Chelsea's historic mansion blocks. Situation Ideally positioned in one of prime central London's most prestigious districts, the property enjoys immediate access to the boutiques, cafés, and fine dining establishments that define Chelsea living. The iconic King's Road offers an eclectic mix of high-end retailers and independent stores, while nearby green spaces such as Battersea Park and Ranelagh Gardens provide tranquil escapes along the River Thames. Excellent transport connections are within easy reach, with Sloane Square Underground Station and South Kensington Underground Station offering access to the District, Circle, and Piccadilly lines, ensuring swift connectivity across London. This enviable location perfectly balances village-like charm with cosmopolitan convenience, making it highly attractive for both owner-occupiers and investors. Property Ref Number: HAM-64362



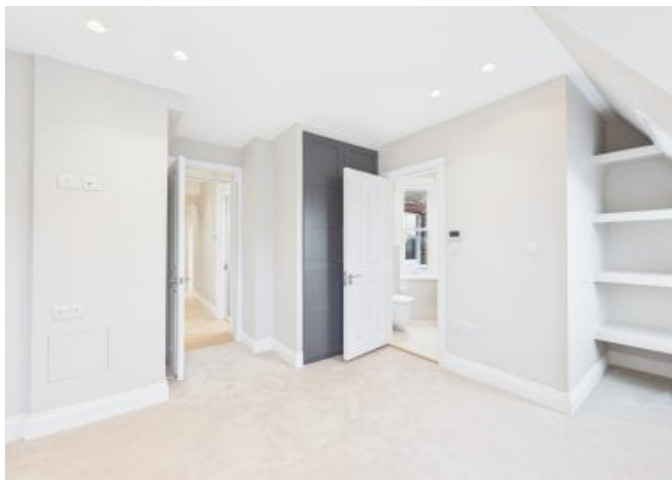
















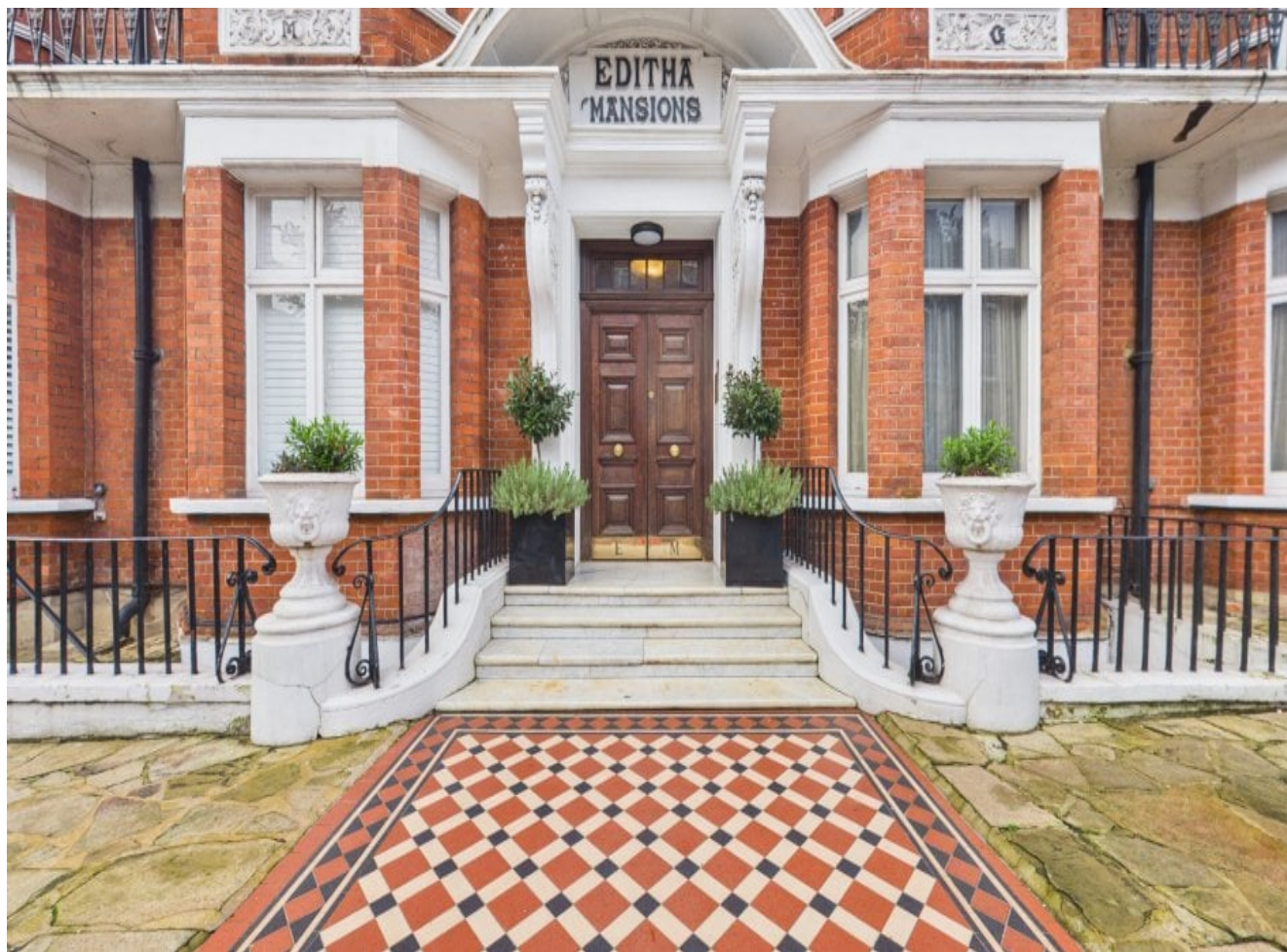
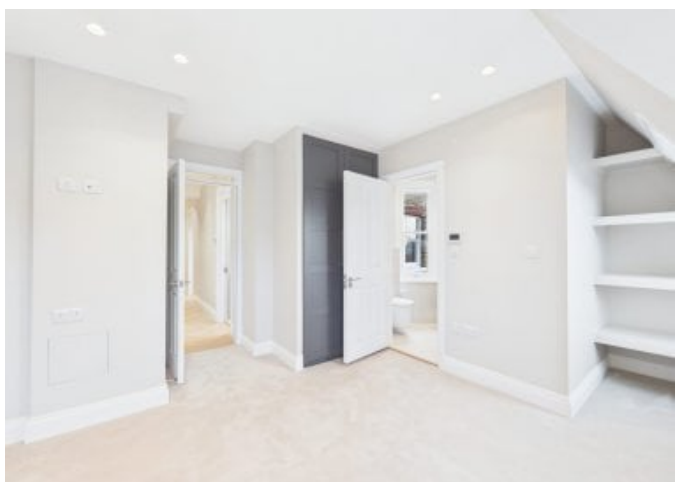


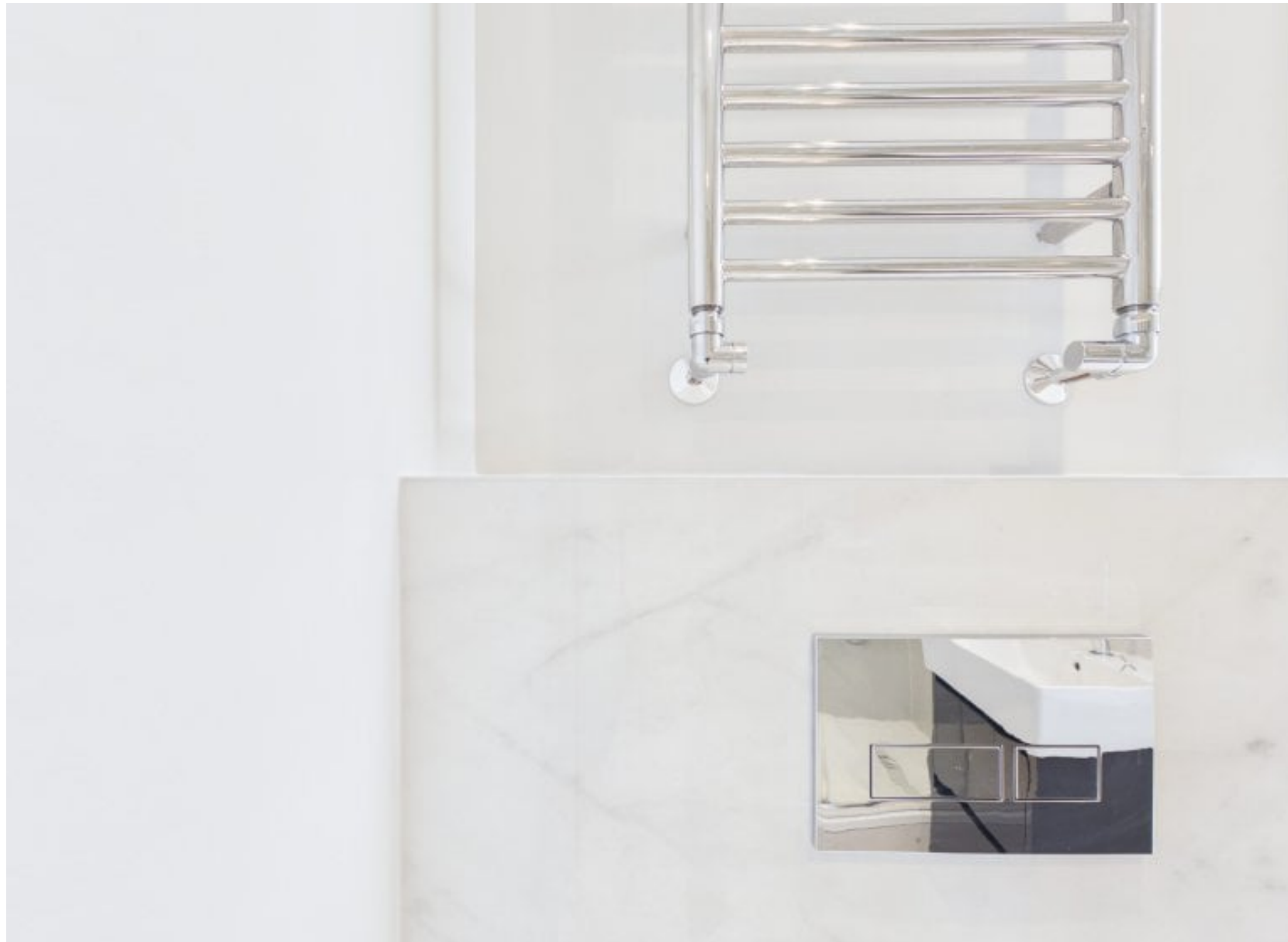










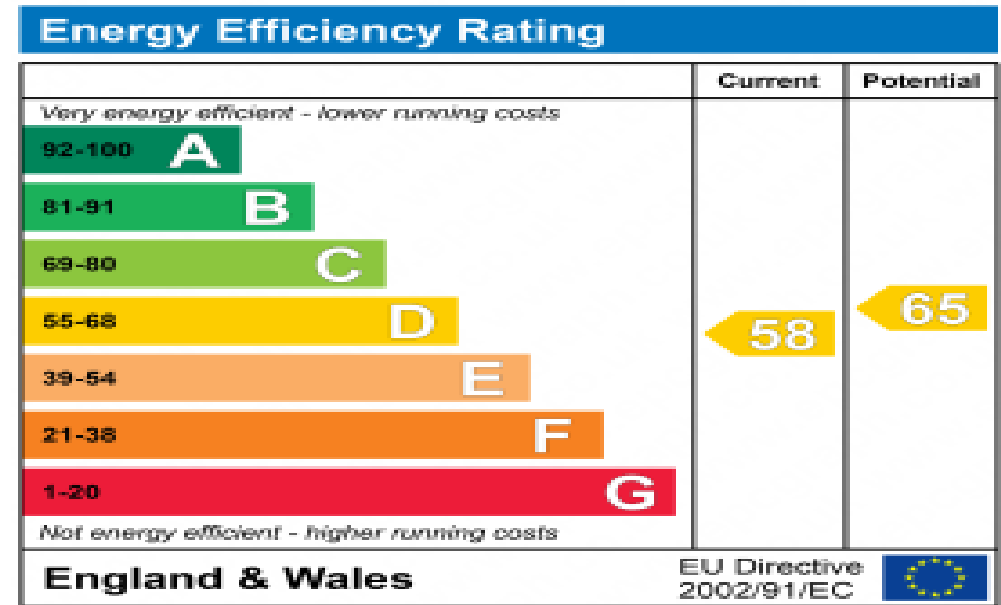








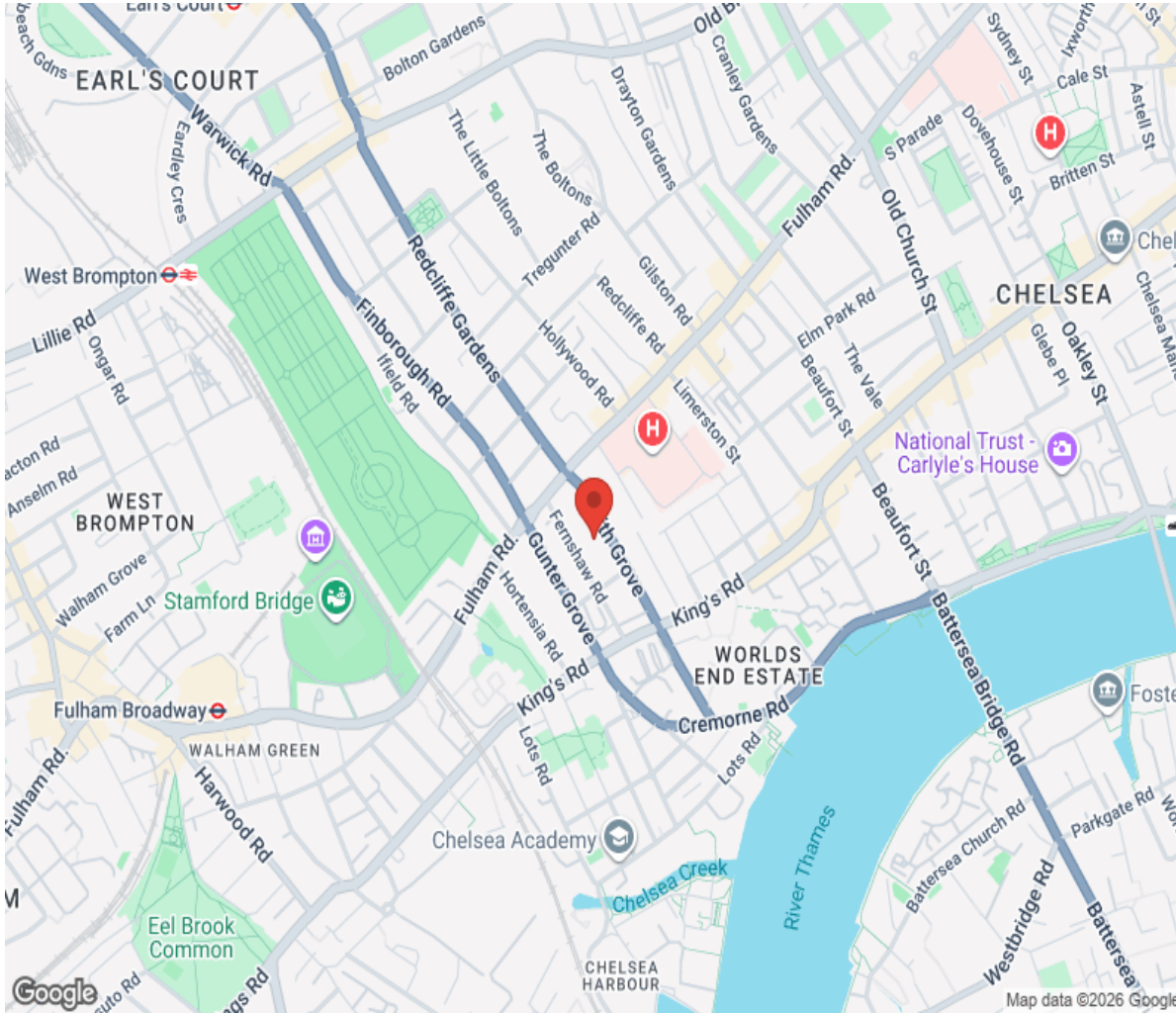




Floor plan



Location



Hamptons

INTERNATIONAL

+44 (0)20 8618 4551

international@hamptons.co.uk

www.hamptons-international.com