




# Hamptons

INTERNATIONAL



**Portnall Road, London, W9**

1  1  1 

**£390,000**

(£390,000)

## Property details



### Key features

- One Bedroom
- Lower Ground Floor Flat
- Period Conversion
- Separate Kitchen
- Chain Free
- Access to Rear Garden

### Attributes

- Apartment

**Portnall Road, London, W9**

**£390,000**  
**(£390,000)**

1 1 1

## Description

**\*VIRTUAL TOUR AVAILABLE\*** A one bedroom ground floor garden flat in need of modernisation. The flat comprises of a spacious reception room, with a separate kitchen, one bedroom and family bathroom. There is also access to the rear garden. Outside Access to Rear Garden. Situation For an extensive choice of entertainment the bars and restaurants of Notting Hill, Queen's Park, Kilburn and Maida Vale are all within easy reach. Local transport links include Queen's Park Station (Bakerloo Line and overground) and Westbourne Park Underground Station (Hammersmith and City Lines), as well as Maida Vale Underground Station (Bakerloo Line). Property Ref Number: HAM-64412 Additional Information Brand New 125 year lease Service Charge: £1301.68pa Ground Rent: na Local Authority: Westminster City Council Tax Band: D







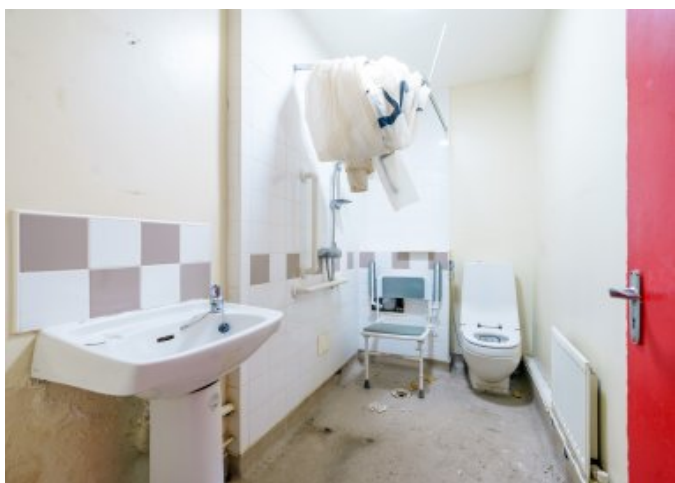




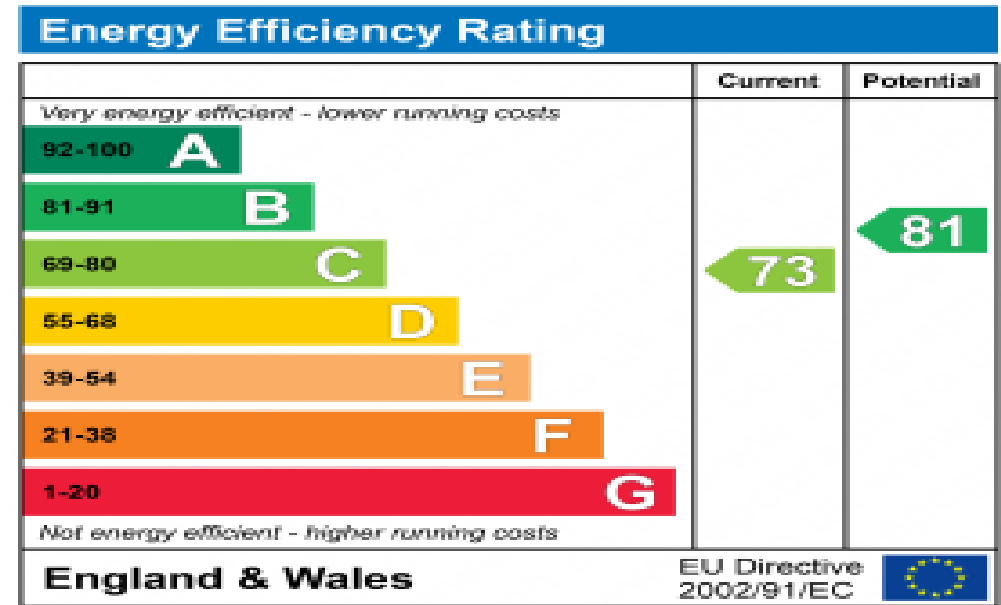












# Floor plan

## PROPERTY SUMMARY

Approximate Gross Internal Area

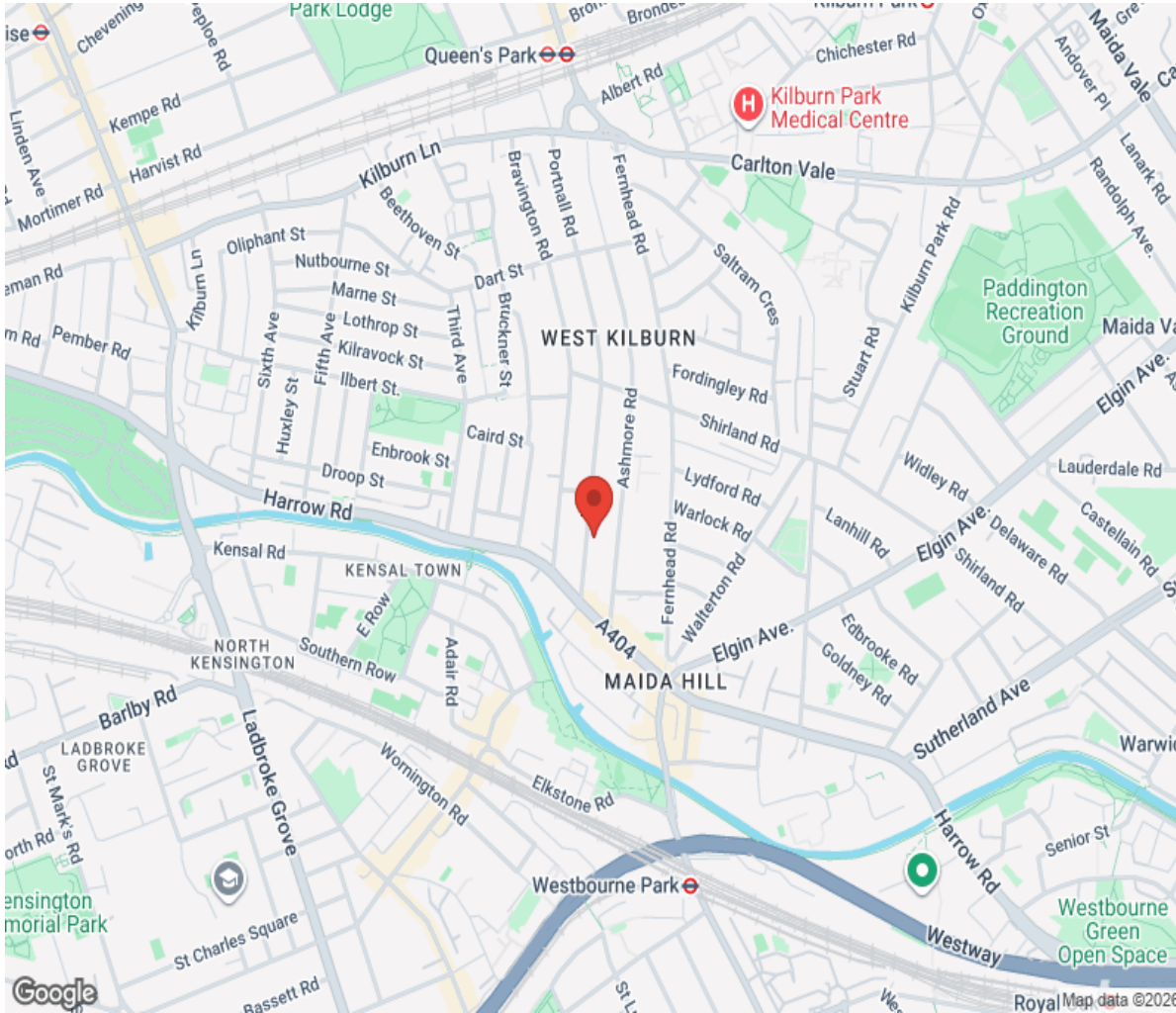
557 sq. ft. 51.8 sq. m.



Lower Ground Floor

This plan is for layout guidance only. No dimension is to be relied upon. Windows and floor openings are approximate. All the every care is taken in the preparation of this plan, please check all dimensions, if any and compare bearings before making any decisions upon them.

# Location



# Hamptons

INTERNATIONAL

**+44 (0)20 8618 4551**

**[international@hamptons.co.uk](mailto:international@hamptons.co.uk)**

**[www.hamptons-international.com](http://www.hamptons-international.com)**