

# Hamptons

INTERNATIONAL

---

**Lanzarote, Puerto del Carmen,**

2 𠄎 2 𠄎




**£380,000**

**(€435,000)**

## Property details



### Attributes

-  **Near to beach**
-  **Garden**
-  **Refurbished**

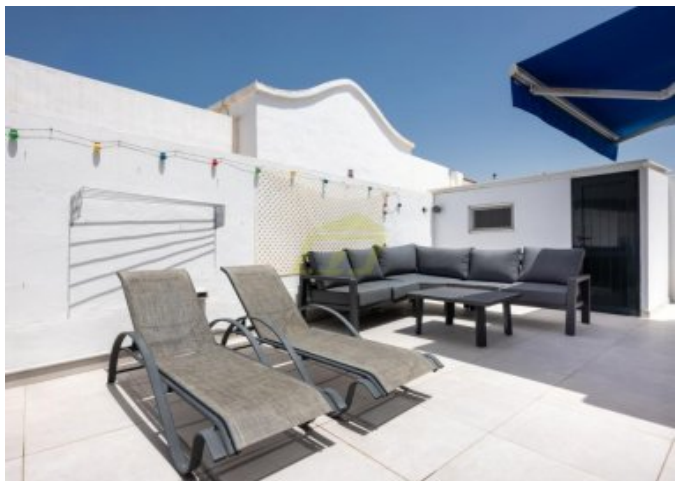
**Lanzarote, Puerto del Carmen,**

2  2 

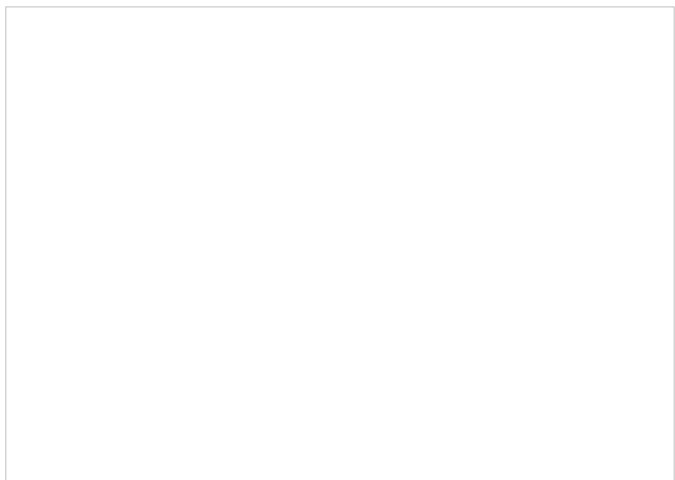
**£380,000**  
**(€435,000)**

## Description

Immaculate fully renovated bungalow in excellent location Nestled in a quiet and friendly neighbourhood within the highly sought-after resort of Puerto del Carmen, this beautifully presented detached bungalow offers the perfect blend of privacy, comfort, and convenience. The property features two spacious double bedrooms, both with fitted wardrobes, including a master suite complete with a modern en-suite bathroom and direct access to the rear garden. A second large bathroom, finished to a high standard with contemporary fittings and floor-to-ceiling tiling, serves the rest of the home. At the heart of the property is a bright and airy open-plan living and dining area, enhanced by a vaulted ceiling that floods the space with natural light. The fully fitted modern kitchen boasts high-end appliances and ample storage, ideal for both everyday living and entertaining. Set on a detached plot, the home benefits from both front and rear garden areas. The front garden is enclosed with stylish privacy glass and features a fitted pergola—perfect for relaxing in the warmer months. To the rear, a generously sized garden enjoys all-day sunshine and offers plenty of space for a hot tub, barbecue, and outdoor dining or entertaining. Additional features include a practical utility/storage cupboard, ideal for use as a workshop or for extra storage. Ideally located just a short 10-minute stroll from the beach and within easy reach of local bars, restaurants, and supermarkets, this property offers both convenience and tranquillity. Whether you're seeking a holiday home or a permanent residence, this turnkey property requires no work and delivers maximum privacy in a prime location.



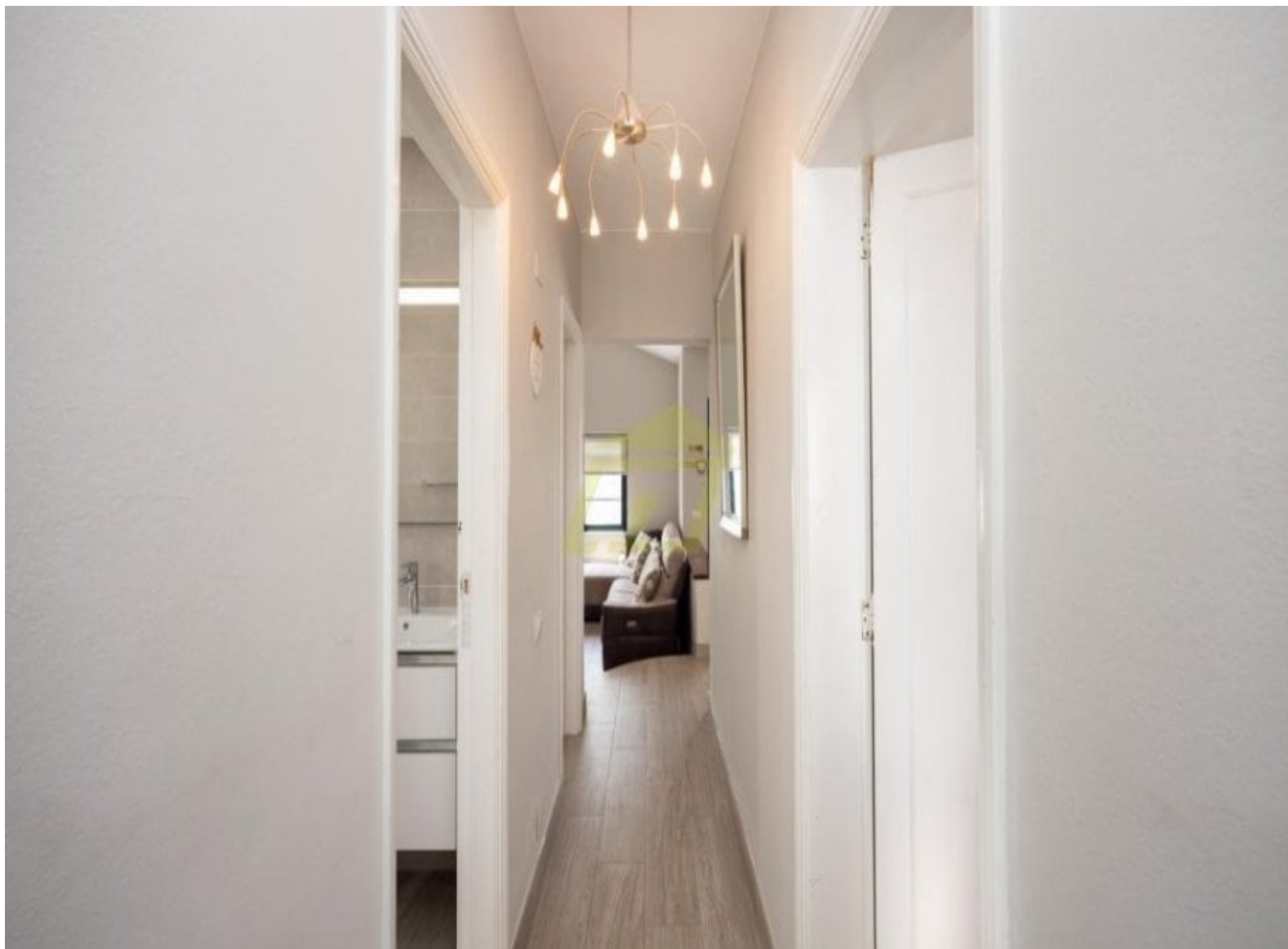


















# Floor plan

---



**TOTAL: 77 m<sup>2</sup>**  
1st floor, 77 m<sup>2</sup>



# Location

---



This site can't load Google Maps correctly.

Do you own this website?  
[g.co/staticmaperror/signature](https://g.co/staticmaperror/signature)



This site can't load Google Maps correctly.

Do you own this website?  
[g.co/staticmaperror/signature](https://g.co/staticmaperror/signature)

# Hamptons

INTERNATIONAL

**+44 (0)20 8618 4551**

**[international@hamptons.co.uk](mailto:international@hamptons.co.uk)**

**[www.hamptons-international.com](http://www.hamptons-international.com)**