

# Hamptons

INTERNATIONAL



**277 Lindura Ct, Las Vegas, NV 89138-4632**

4 🏠 4 🏡

**£1,440,000**

**(\$1,925,000)**

## Property details



### Key features

- **Garage Count: 3 Car Garage**
- **Pool Description: Pool**
- **Basement: None**
- **Garage Description: Garage**
- **Special Program: Global Luxury**

### Attributes

-  **Swimming pool**
-  **Garage**
-  **Garden**

**277 Lindura Ct, Las Vegas, NV 89138-4632**

**£1,440,000**  
**(\$1,925,000)**

4 🏠 4 📄

## Description

Better than new desert Oasis! This stunning single-story home in one of Summerlin's most desirable gated communities offers exceptional outdoor & indoor living! An entertainer's dream, this immaculate property features casual elegance throughout. Open concept living, formal Dining Room, multiple outdoor entertaining areas, custom outdoor kitchen, designer pool & spa, outdoor shower, fire table & water wall off dining room & raised garden bed with fruit trees. Three en-suite bedrooms with designer closets, 4th Bed custom built as an office, spa bath at primary bed. Chef's kitchen is outfitted with double ovens, stainless appliances, ceiling-height cabinetry, pull-out shelves in cabinets, dining Nook & custom Pantry with butcher block countertops, spice racks & beverage cooler. Enjoy energy-saving Owned solar, tandem garage w/custom epoxy floor, ceiling racks, built-in cabinets, EV charger & dedicated Dog Run. Home automation system; cameras & speakers inside & out. Too much to mention!





2026





R 2026





2026









2026





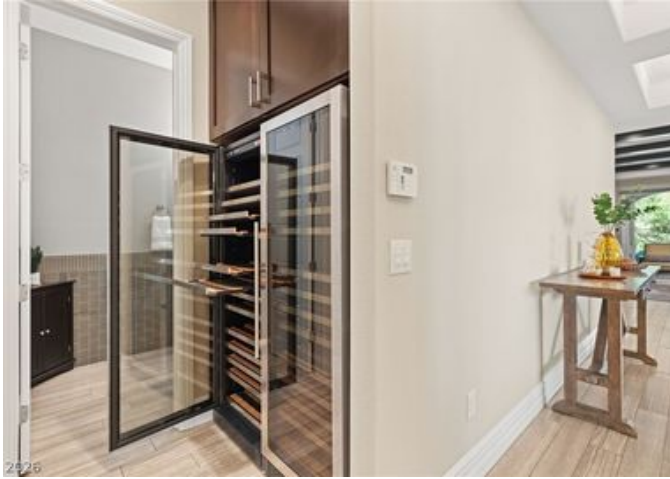
2026

































2026





























2026

277 LINDURA COURT, LAS VEGAS, NV, 89138

### AREA REPORT

## CONVENIENT

This home is in a convenient area. Some daily errands in this location require a car and most major services are within 2 miles.

ATM	GAS	PHARMACY	COFFEE	GYM
1.6 MILES	1.6 MILES	1.6 MILES	1.6 MILES	1.6 MILES
MEDIA CENTER	CLEANERS	MEDICAL		
2.3 MILES	2.3 MILES	1.7 MILES		

DISCLAIMER: The information in this report is from third-party sources and its accuracy cannot be guaranteed.



# SCHOOLS IN YOUR AREA

The assigned schools are **above average** for the area. There are also **9** private schools and **2** charter schools within **5** miles.

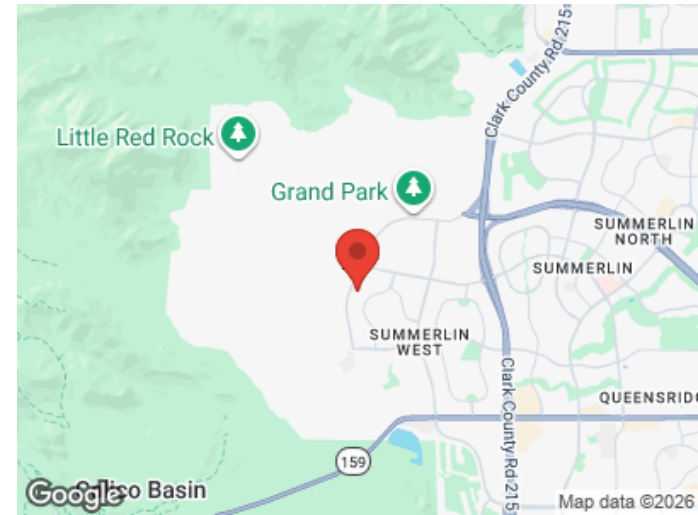
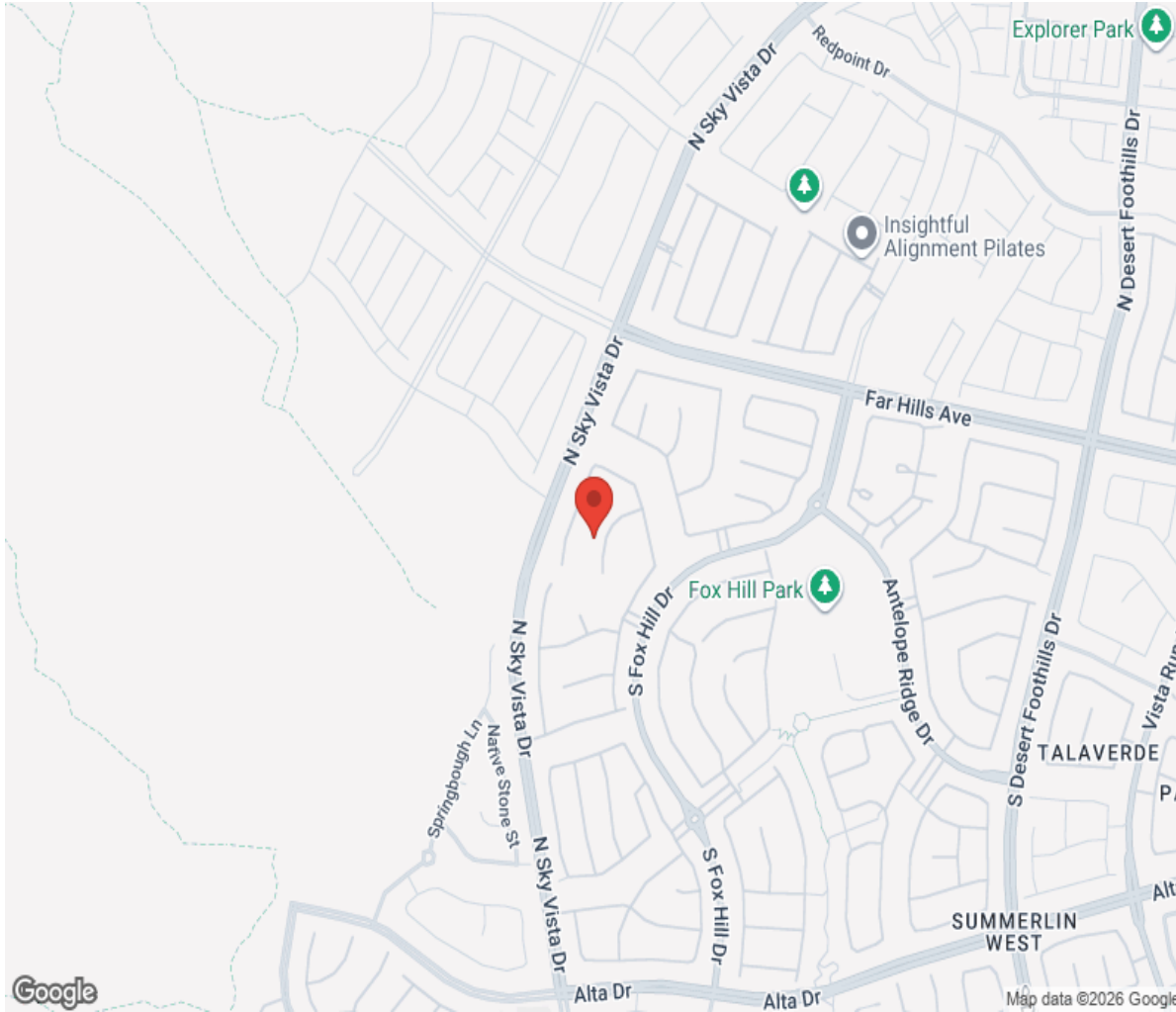
- K-5** BILLY AND ROSEMARY VASSILIADIS ELEMENTARY SCHOOL ASSIGNED **8** RATING
- 6-8** SIG ROGICH MIDDLE SCHOOL ASSIGNED **8** RATING
- 9-12** PALO VERDE HIGH SCHOOL ASSIGNED **9** RATING





# Location

---



# Hamptons

INTERNATIONAL

**+44 (0)20 8618 4551**

**[international@hamptons.co.uk](mailto:international@hamptons.co.uk)**

**[www.hamptons-international.com](http://www.hamptons-international.com)**