

# Hamptons

INTERNATIONAL

**209 S 13th St, Wilmington, NC 28401**

**3 𠂆 2 𠂆**

**£250,000**

**(\$335,000)**

## Property details



026 Hive MLS

**209 S 13th St, Wilmington, NC 28401**

3 🏠 2 📄

**£250,000**  
**(\$335,000)**

### Key features

- **Basement: None**

### Attributes

- 🅅 **Private parking**
- 🌿 **Garden**
- 🛠️ **Refurbished**

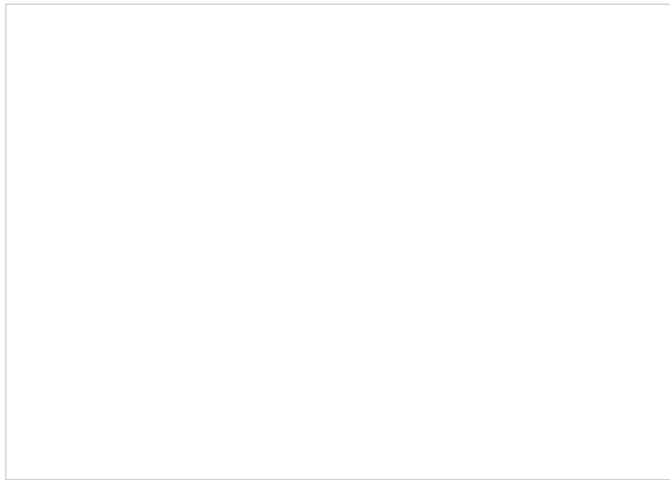
---

## Description

Built in 1903 and now enjoying a thoughtful new chapter, this move-in ready historic home at 209 S 13th Street blends classic Wilmington character with fresh modern updates in the heart of downtown Wilmington's historic area. Located along a picturesque brick street, this 3-bedroom, 2-bath cottage reflects vernacular architecture with Craftsman and Victorian influences, highlighted by its inviting full-width front porch offering approximately 144 square feet of outdoor living space--the perfect place to enjoy morning coffee, evening breezes, and the timeless charm of the surrounding historic neighborhood. Inside, the home has been thoughtfully renovated, creating a bright and refreshed interior while preserving the scale and character expected from a home of this era. Luxury vinyl plank flooring runs throughout the home, complemented by neutral finishes, updated lighting, and clean architectural lines that create a cohesive and welcoming atmosphere. The layout begins with a spacious living room at the front of the home, filled with natural light and offering a comfortable gathering space just steps from the front porch. Just beyond the living area, the primary suite features a walk-in closet and private ensuite bath, while two additional bedrooms and a hall full bath are positioned through the center of the home, providing flexibility for guests, home office space, or additional living needs. Toward the rear, the home opens into a kitchen and dining area designed for everyday living and entertaining. The updated kitchen features white cabinetry, stainless appliances, subway tile backsplash, and generous counter space, offering both style and functionality. The adjacent dining area provides space for seating and gatherings. A nearby laundry area adds everyday convenience along with practical storage. Step outside to a backyard offering room to relax, garden, entertain, or create your own outdoor retreat. Mature trees add shade and character, while rear street access behind the property provides additional flexibility for parking, access, or future possibilities--a valuable feature in downtown neighborhoods. With 1,399 heated square feet, the home offers a comfortable and efficient layout that balances open living areas with thoughtful bedroom separation. Historic homes that combine classic architecture, modern updates, outdoor space, and a downtown location are increasingly rare. This thoughtfully refreshed property offers the opportunity to enjoy the character of Wilmington's past with the comfort and convenience of today. Located just minutes from the Cape Fear Riverwalk, downtown Wilmington dining, local shops, and vibrant cultural attractions, this property offers a rare opportunity to enjoy historic architecture, modern updates, outdoor space, and move-in ready convenience in the heart of downtown living. Please ask for additional details on the stipulations relating to sale of this property.









26 Hive MLS



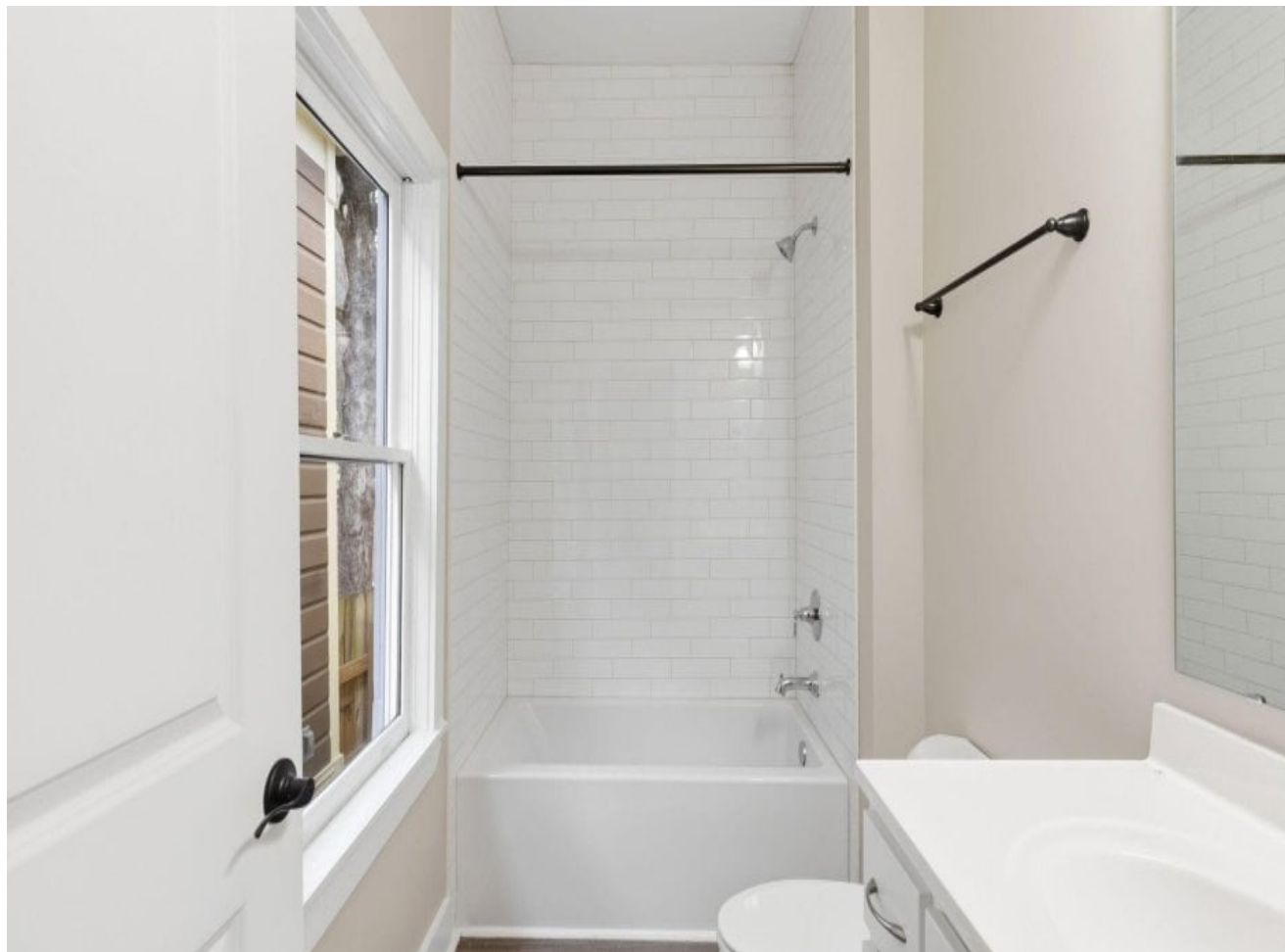
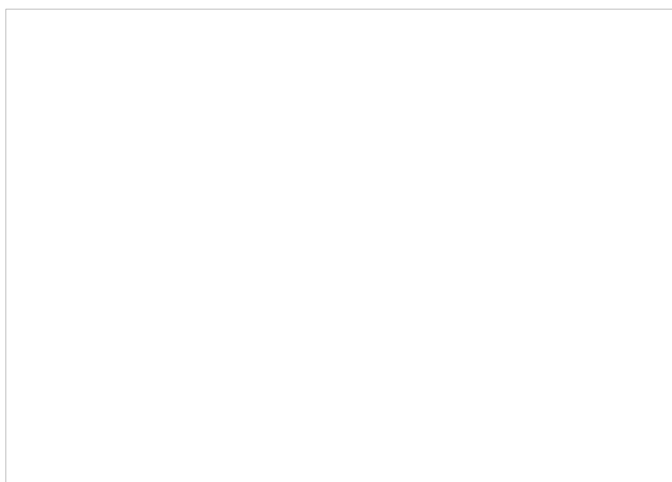
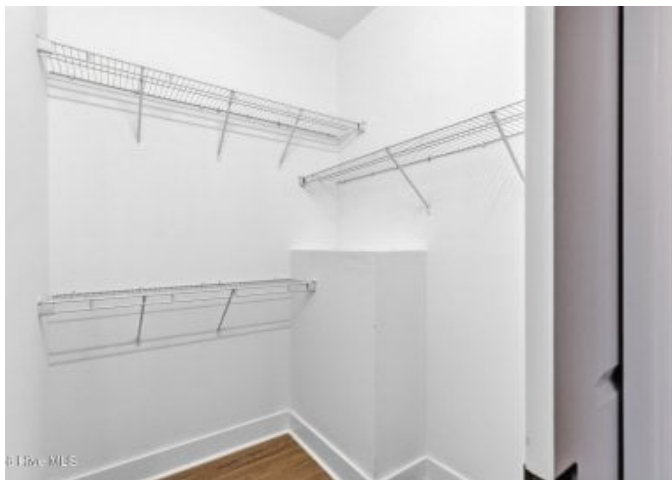


26 Hive MLS





26 Hive MLS





26 Hive MLS



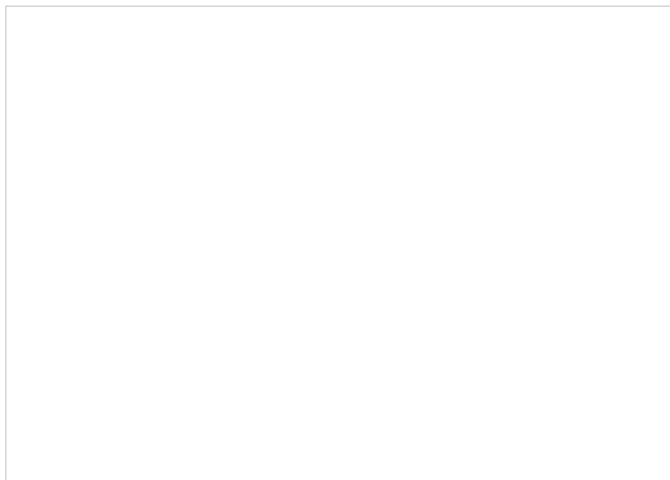


26 Hive MLS





26 Hive MLS



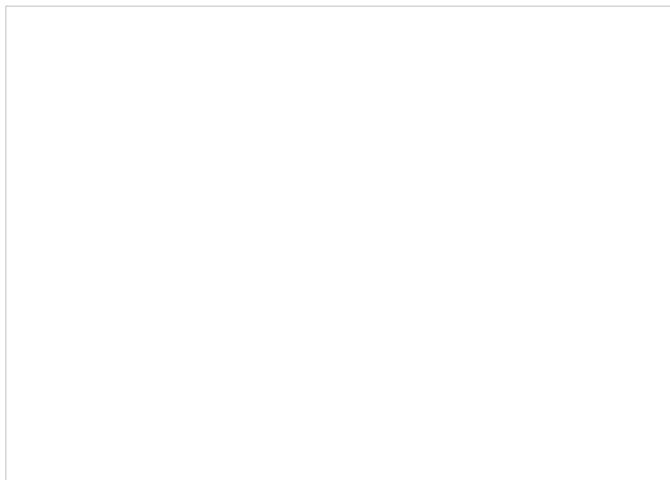


26 Hive MLS



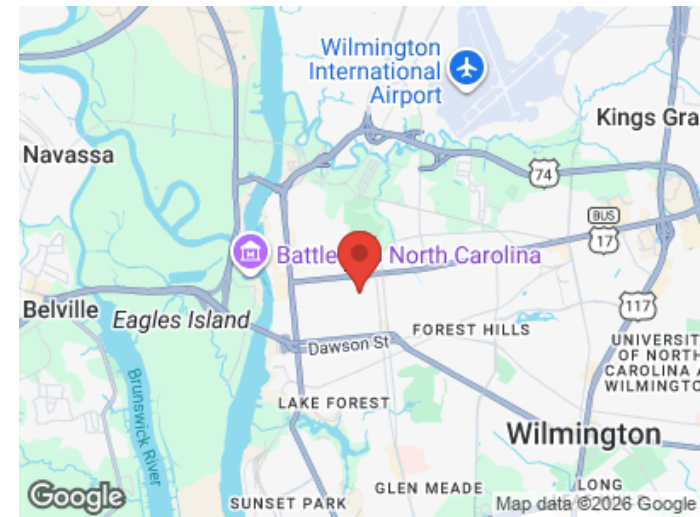
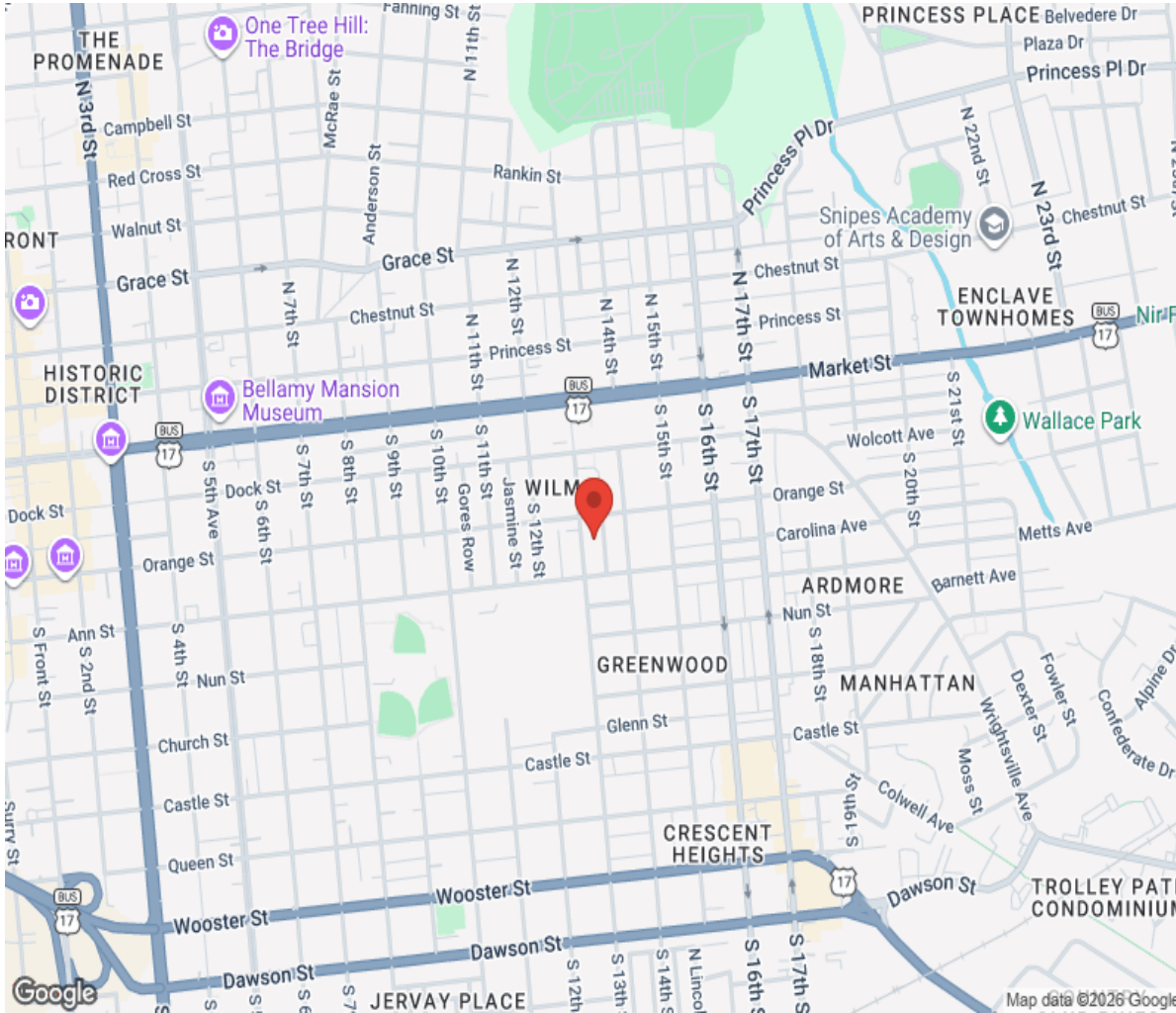


26 Hive MLS





# Location



# Hamptons

INTERNATIONAL

**+44 (0)20 8618 4551**

**[international@hamptons.co.uk](mailto:international@hamptons.co.uk)**

**[www.hamptons-international.com](http://www.hamptons-international.com)**