

Hamptons

INTERNATIONAL



1411 Edgehill Pl, Pasadena, CA 91103

5 𠂆 4 𠂆

£2,980,000

(\$3,999,000)

Property details



1411 Edgehill Pl, Pasadena, CA 91103

5 🏠 4 📄

£2,980,000
(\$3,999,000)

Key features

- **Garage Count: 2 Car Garage**
- **Sewer: Public**
- **Cooling: Central A/C**
- **Water: City Water**
- **Special Program: Global Luxury**

Attributes

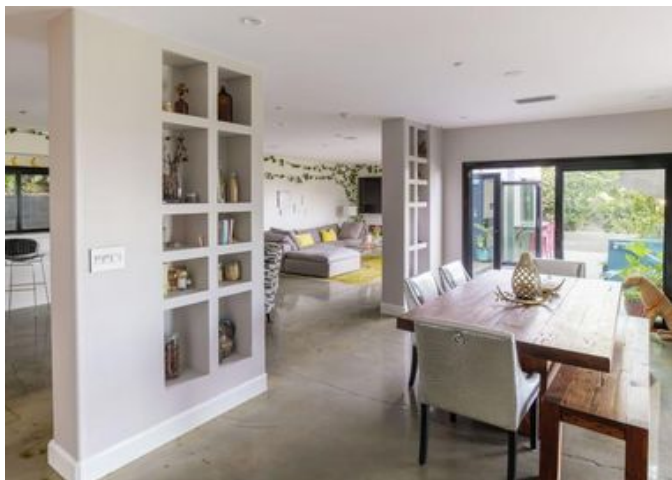
- 🍇 **Vineyard**
- 🏊 **Swimming pool**
- 🌲 **With land**
- 🌿 **Garden**

Description

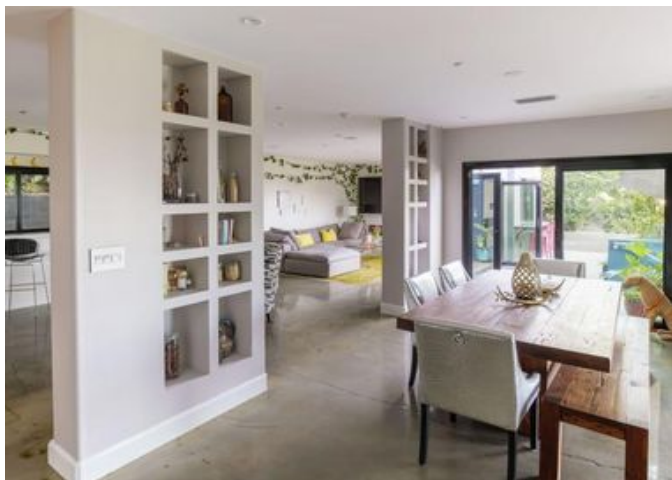
Above Linda Vista and beyond compare, this extraordinary modern estate floats high above Pasadena on over four private acres, commanding breathtaking panoramic vistas that stretch across rolling greenery, historic landmarks, the San Gabriel Mountains, and the sparkling cityscape below. Hidden at the end of an exclusive private drive shared by only three residences, the property offers a rare fusion of complete privacy, architectural style, and a distinctly elevated California lifestyle. Designed with a sophisticated Westside aesthetic and an effortless indoor-outdoor flow, the residence feels both cutting-edge and deeply livable. Walls of glass, expansive terraces, and dramatic entertaining spaces dissolve the boundaries between interior and exterior, all framed by cinematic views from nearly every vantage point. The grounds unfold like a private hillside resort -- lush rose gardens, mature citrus trees, thriving vegetable gardens, and endless flat usable spaces create an atmosphere that is both serene and inspiring. The scale and acreage present exceptional opportunities for expansion and customization: envision a guest house, designer ADU, resort-style pool and spa, wellness studio, vineyard, sport court, or curated gardens worthy of a boutique retreat. Inside, the interiors are bold, creative, and unmistakably design-forward. Vibrant yet refined, the home was crafted for both intimate living and unforgettable entertaining. The upper level features five bedrooms, including a spectacular primary suite that feels suspended above the landscape. Soaring ceilings, a private view terrace, fireplace, dual walk-in closets, sauna, and a spa-caliber bath with soaking tub, steam shower, and dual vanities create an experience rivaling a luxury resort. Accordion glass doors open to expansive terraced patios that invite sunset dinners, late-night gatherings, and quiet mornings above the clouds. Every space has been thoughtfully positioned to capture the home's most extraordinary asset: the feeling of living completely above it all. A rare architectural compound where privacy, land, design, and breathtaking views converge into something truly unforgettable.













LS



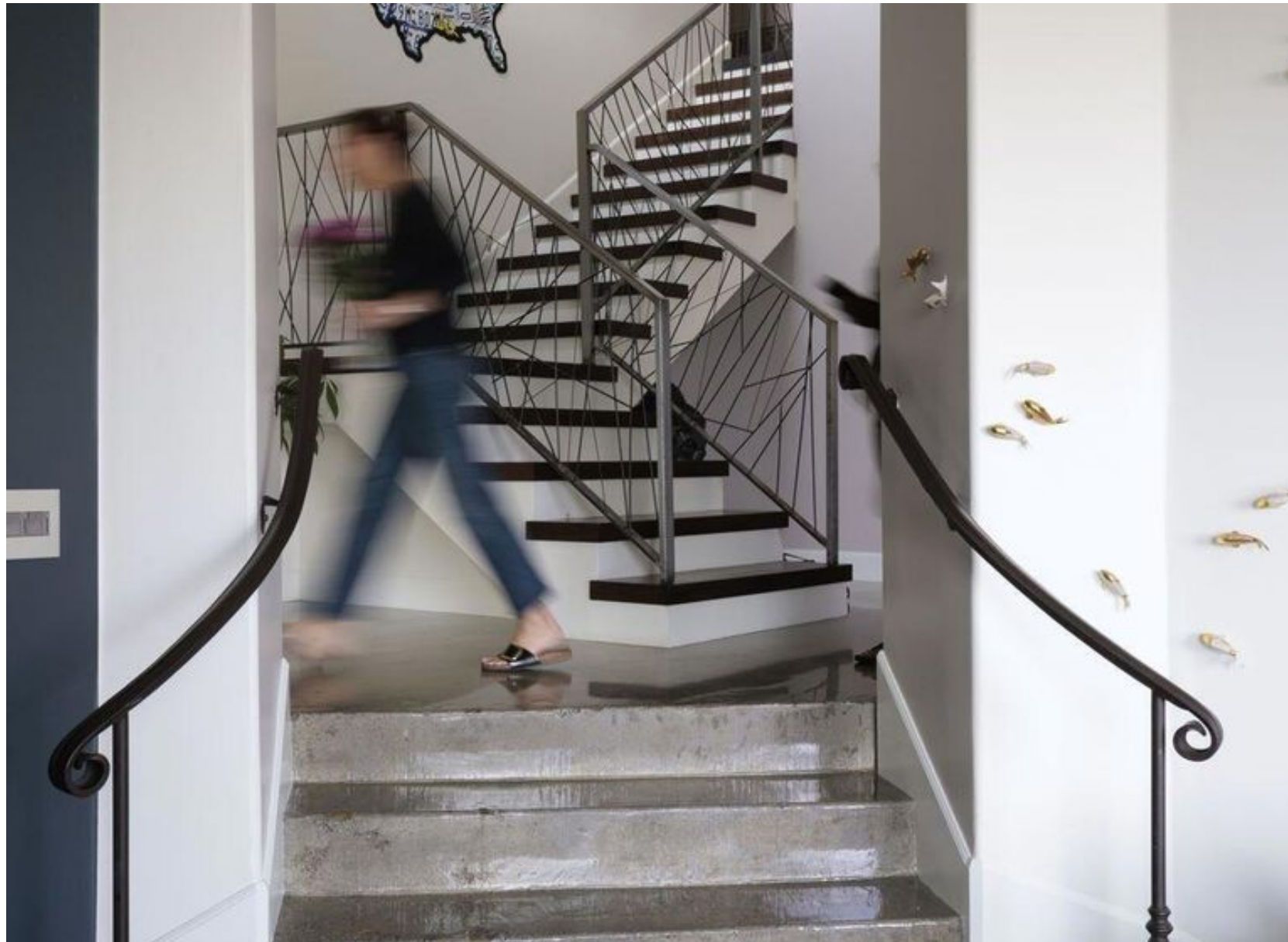






LS

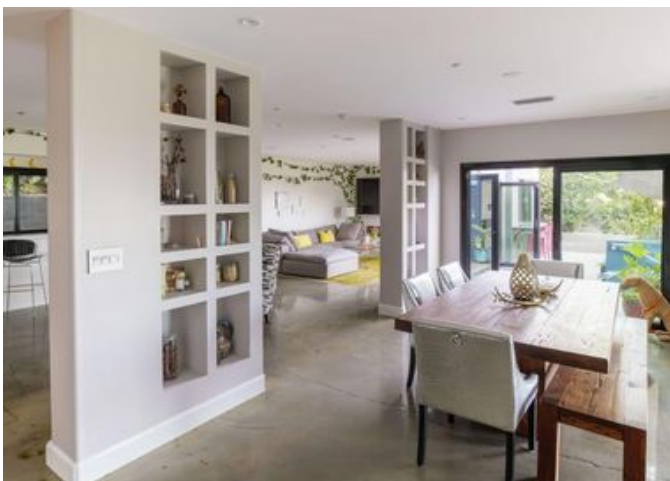








LS







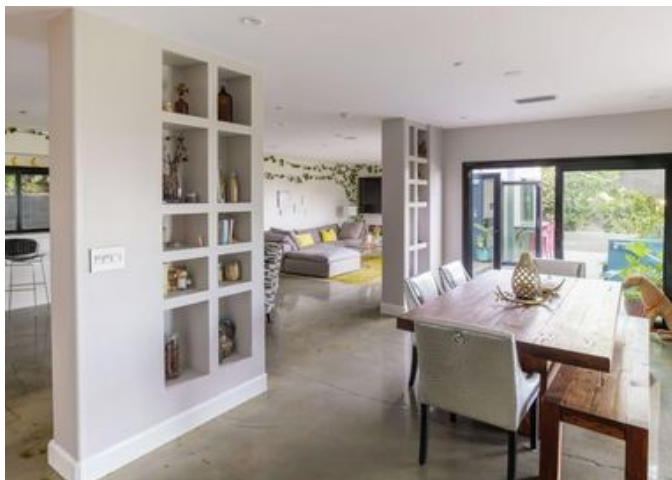












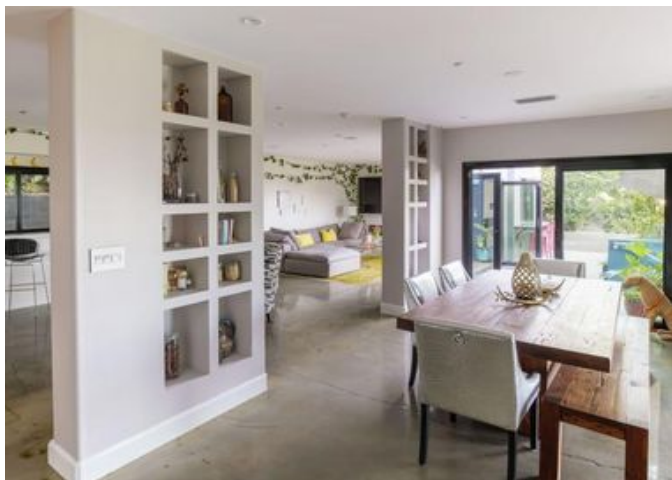


LS





LS

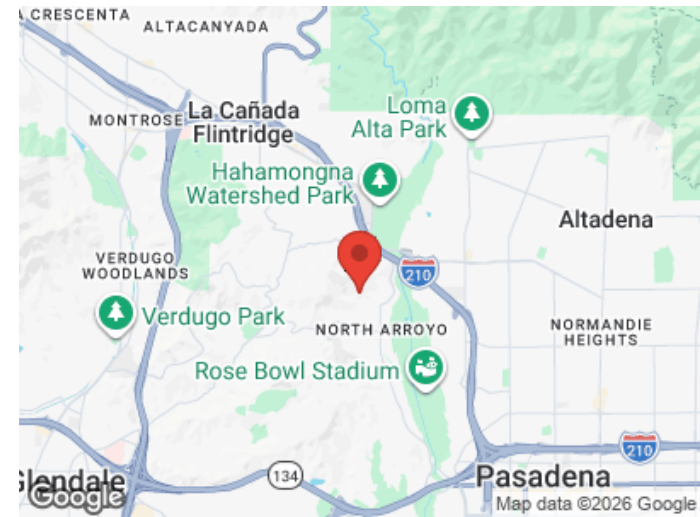
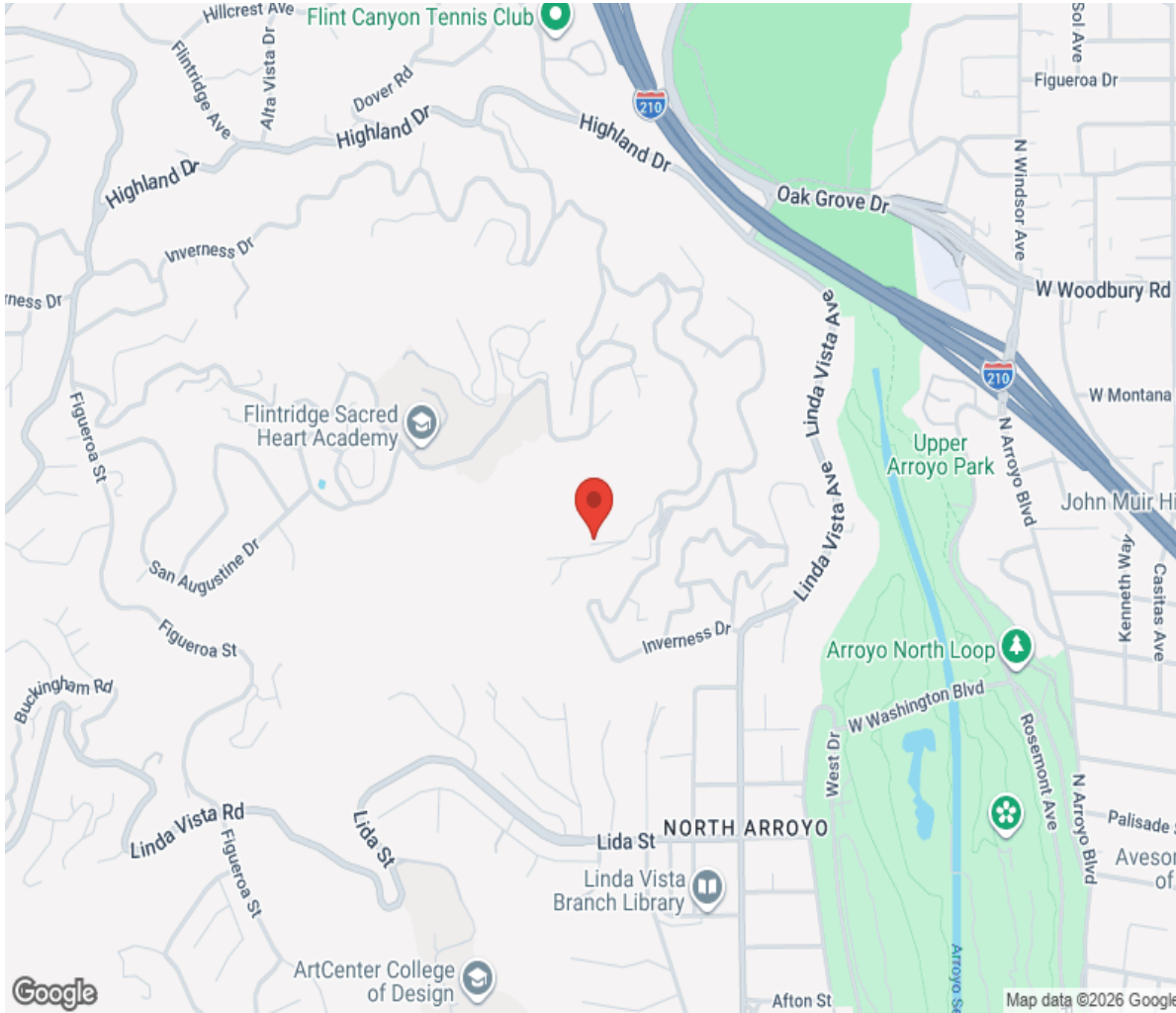








Location



Hamptons

INTERNATIONAL

+44 (0)20 8618 4551

international@hamptons.co.uk

www.hamptons-international.com