

# Hamptons

INTERNATIONAL



**7080 Long Leaf Dr, Parkland, FL 33076**

5 🏠 4 🚗

**£1,860,000**

**(\$2,495,000)**

## Property details



### Key features

- **Garage Count: 2 Car Garage**
- **Water: Municipal Water**
- **Sewer: Public**
- **Pool Description: Pool**
- **Cooling: Central A/C**
- **Special Program: Global Luxury**

### Attributes

- 🏊 **Swimming pool**
- 🏌️ **Near golf course**
- 🏋️ **Gym**

**7080 Long Leaf Dr, Parkland, FL 33076**

**£1,860,000**  
**(\$2,495,000)**

5 🏠 4 🚗

## Description

**\*\*No Open House this weekend - Available for private showings\*\*** Experience refined living in prestigious Parkland Golf & Country Club. This stunning 5-bedroom, 4-bath residence is ideally positioned on a prime lot with breathtaking golf and lake views, a 2-year new roof, and the added peace of mind of a full-house generator. A thoughtfully designed layout features a first-floor primary suite with a custom dream closet and spa-inspired bath, along with two additional bedrooms and full baths on the main level for exceptional everyday livability. The second floor offers a private guest suite and a versatile flex space ideal for a home gym, media room, or office. Showcasing meticulous craftsmanship throughout, the home is appointed with marble flooring, designer lighting, and elegant crown molding. At its center, an open-concept chef's kitchen with premium Thermador appliances flows seamlessly into expansive living areas, creating a space equally suited for entertaining and relaxed daily living. Step outside to your own private retreat-complete with a resort-style pool, tranquil fountains, and an automated screened enclosure that captures sweeping views while offering a shaded, breezy outdoor experience. All set within a premier country club community offering exceptional amenities, this home delivers a lifestyle defined by comfort, sophistication, and ease.













































05843 SEFMLS© 2026

































6842 SEFMLS © 2026





A12005343 SEF ML3 © 2026



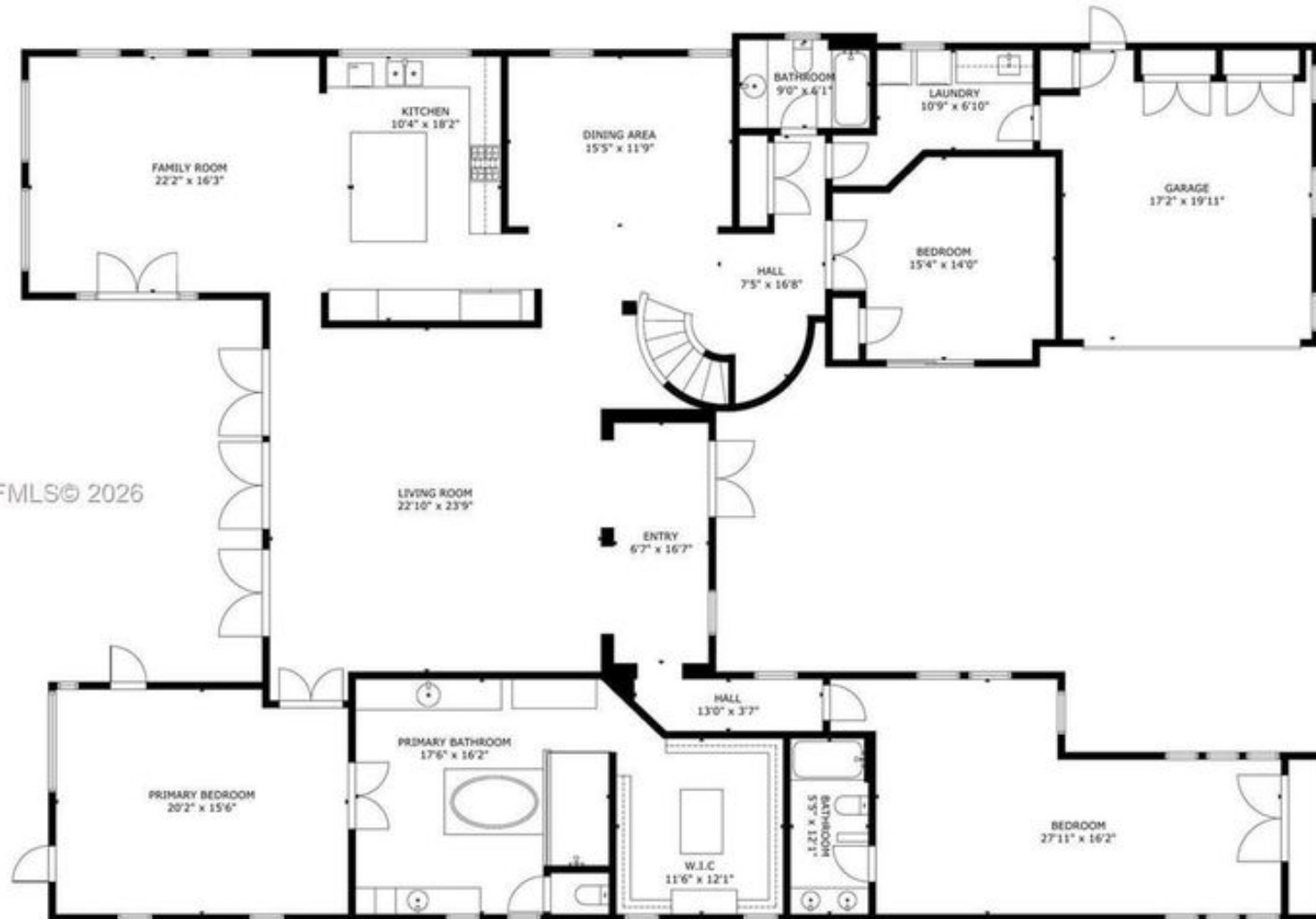








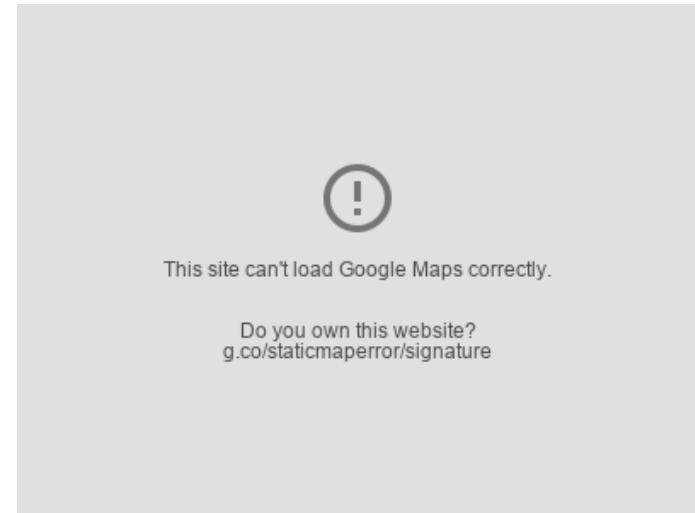
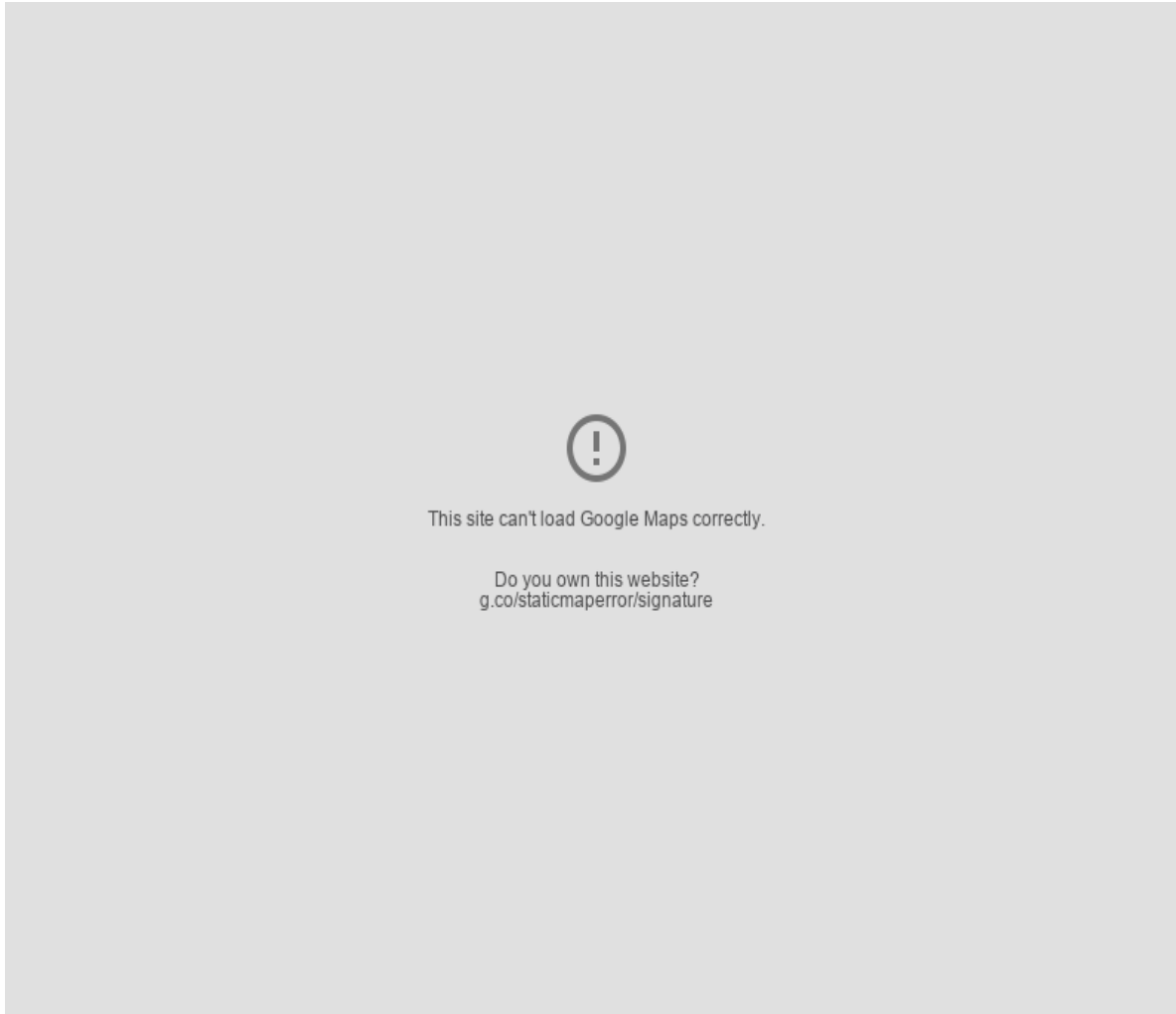
3 SEFMLS© 2026



GROSS INTERNAL AREA  
TOTAL: 4,134 sq ft  
FLOOR 1: 3,381 sq ft, FLOOR 2: 753 sq ft  
EXCLUDED AREAS: GARAGE: 353 sq ft  
SIZE AND DIMENSIONS ARE APPROXIMATE, ACTUAL MAY VARY

# Location

---



**Hamptons**

INTERNATIONAL

**+44 (0)20 8618 4551**

**international@hamptons.co.uk**

**www.hamptons-international.com**