

Hamptons

INTERNATIONAL



1688 Pine St, San Francisco, CA 94109

2 1/2 2 1/2

£1,120,000

(\$1,498,000)



Property details



Key features

- **Cooling: Central A/C**
- **Garage Count: 1 Car Garage**
- **Sewer: Public**
- **Water: City Water**

Attributes

- **Apartment**
-  **Private parking**
-  **Refurbished**

1688 Pine St, San Francisco, CA 94109

£1,120,000
(\$1,498,000)

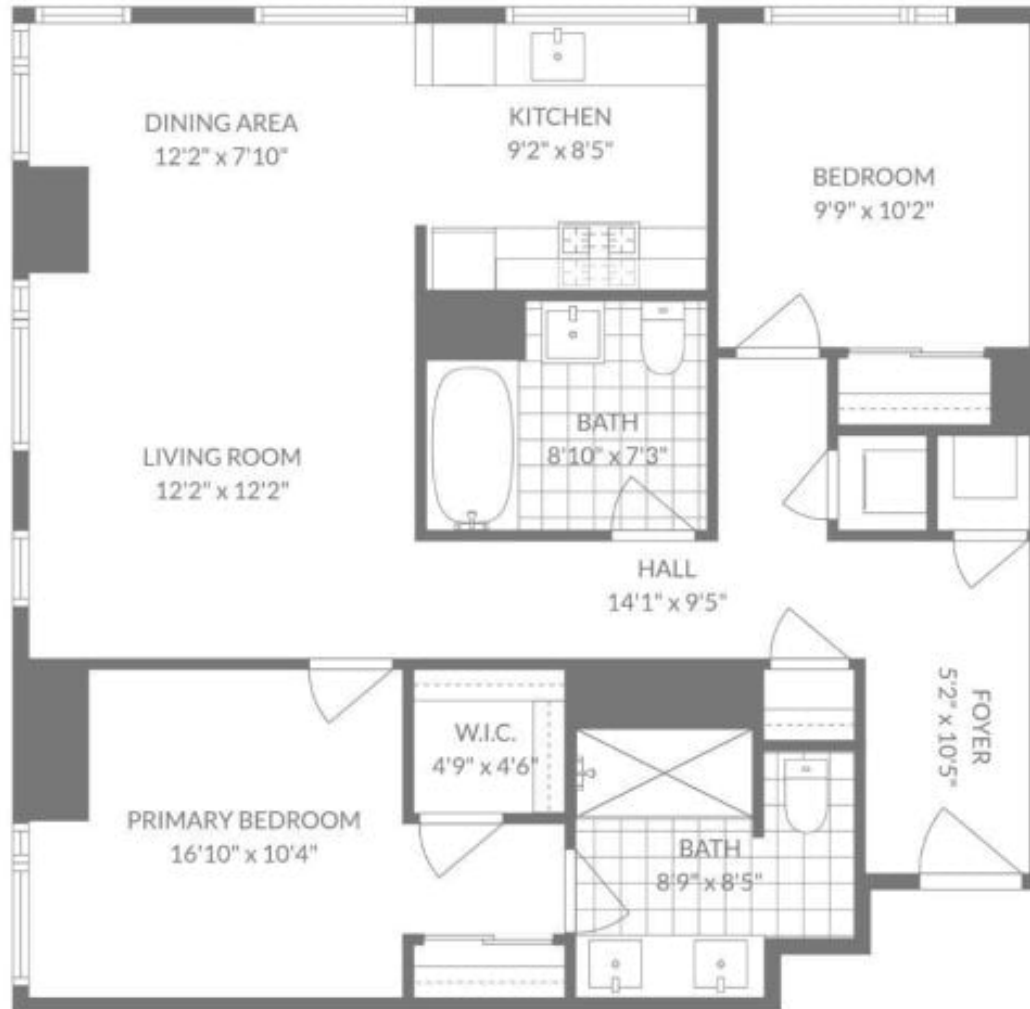
2 🏠 2 🗺️

Description

E1008 is now pending. Seller will consider back up offers. Open houses for E1008 will be Sat, May 23rd and Sun, May 24th and Monday, May 25th from 12pm to 5pm. Text Mary Anthony Venegas at 415.955.7968 to attend open house. Vacant and ready. The Rockwell is one of the best run condo buildings in San Francisco. Fantastic financials and reserves. Over \$7 Million plus in reserves. The seller will consider a preemptive offer. Low HOA fees for so many great building amenities; a 24/7 front desk, fitness center, residence lounge, media room, courtyard with BBQ grill, bike room, a Tesla and Chevy Bolt for hourly rent for residents of the Rockwell and a stunning sky lounge and sky deck with sweeping city views. Welcome to Rockwell Residences. East 1008 is a sophisticated luxury condominium just three blocks walking to Lafayette Park in the prestigious Pacific Heights neighborhood. This southwest-facing corner unit is a 935 sq ft 2BD/2BA home that is flooded with natural light and floor-to-ceiling windows. This condo features nearly \$100K in premium upgrades, including hardwood floors, high end appliances; washer/dryer, gas stove, oven, dishwasher and refrigerator, custom built-in closets, window coverings, and a dedicated deeded storage unit and parking with a charging station and upgraded weight capability. Central AC and Heat. High speed Wi-Fi, great staff and management. Rental potential for this unit is \$6,495.00 per month, including parking. Upper Stackable Spot #45. Parking dimensions 59 inches in height max, width 75 inches and length 197 inches. Parking max weight is 5700 pounds. Low HOA fees per month are \$893.96. Enjoy the convenience of one deeded parking with EV charging. Built in 2016, this modern 13-story, 261-residence building offers full-service amenities: Whole Foods Market around the corner, Apple Tech shuttle a half block away, and just minutes to the Financial District via Muni. Restaurants and shops are just steps away. Experience elevated active luxury living in one of San Francisco's most desirable locations and condo buildings. Welcome to your new home. Tesla 3 fits in the parking spot per parking dimensions. Pet friendly.



TOTAL: 936 sq. ft.
1st Floor: 796 sq. ft.
EXCLUDED: HALL: 14.1 sq. ft.
BATH: 8.9 sq. ft.



TOTAL: 936 sq. ft
1st floor: 936 sq. ft
EXCLUDED AREAS: WALLS: 63 sq. ft

FLOOR PLAN CREATED BY CURICASA APP. MEASUREMENTS DEEMED HIGHLY RELIABLE BUT NOT GUARANTEED.



TOTAL: 936 sq. ft.
1st Floor: 796 sq. ft.
EXCLUDED: HALL: 43 sq. ft.





TOTAL: 936 sq. ft.
1st Floor: 796 sq. ft.
EXCLUDED: HALL: 11.5 sq. ft.
EXCLUDED: BALCONY: 10.5 sq. ft.













TOTAL: 936 sq. ft.
1st Floor: 796 sq. ft.
EXCLUDED: HALL: 43 sq. ft.











































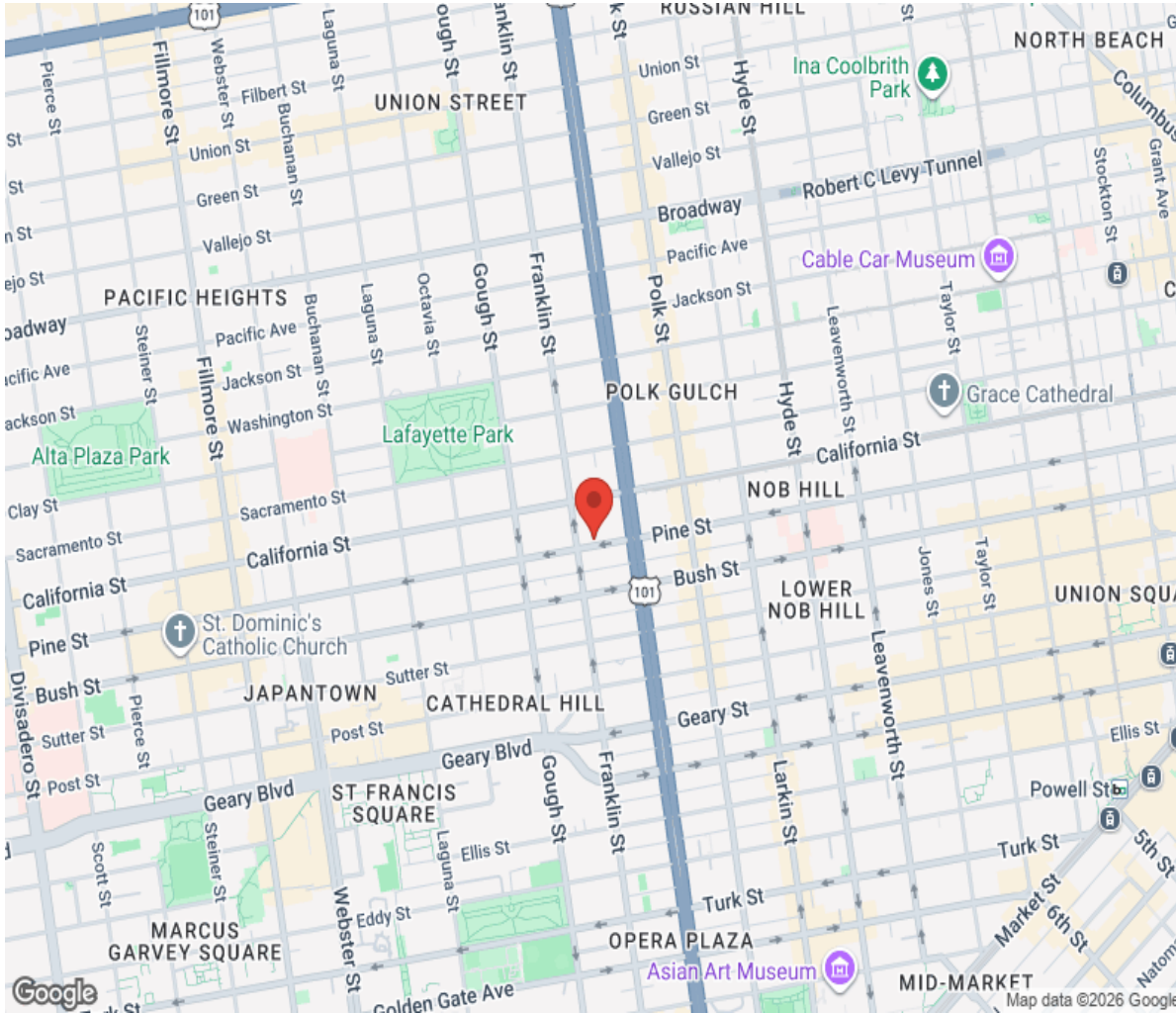








Location



Hamptons

INTERNATIONAL

+44 (0)20 8618 4551

international@hamptons.co.uk

www.hamptons-international.com