

# Hamptons

INTERNATIONAL



CRMLS

**2001 Kenilworth Ave, Silver Lake, CA 90039**

4  4 

**£2,070,000**

**(\$2,775,000)**

## Property details



### Key features

- **Garage Count: 2 Car Garage**
- **Age: Over 50 Years Old**
- **Sewer: Public**
- **Appliances: Microwave**
- **Appliances: Dishwasher**
- **Exterior Living Space: Terrace**

### Attributes

- ↕ **Gym**
- 🌿 **Garden**

**2001 Kenilworth Ave, Silver Lake, CA 90039**

**£2,070,000**  
**(\$2,775,000)**

4 🏠 4 🚗

## Description

Set on a prominent corner lot in the heart of the Moreno Highlands, this beautifully reimagined residence offers a rare combination of panoramic Reservoir views and architectural flexibility within the Ivanhoe School District. Thoughtfully modernized, this home features a comprehensive transformation including a new high-efficiency dual-zone HVAC system, new windows, and designer-curated finishes throughout. The main level offers a bright, open layout flowing seamlessly from the living and dining areas into the Custom Chef's Kitchen--anchored by a striking Taj Mahal Quartzite waterfall island and stone-wrapped walls. Large glass sliders extend the living space to an expansive terrace, creating an effortless indoor-outdoor experience with the Silver Lake Reservoir as your backdrop. The primary suite is a private retreat featuring dual closets, a soaking tub, and a triple-head walk-in shower, all complemented by a private terrace. The lower level is a standout feature of the property, designed as a dedicated Work & Entertainment Hub or guest suite. With independent access from Balmer Dr, this level includes a central lounge with a custom wet bar, two additional bedrooms, and a versatile ~500 sq. ft. Bonus Studio--an ideal footprint for a home gym or creative workspace. (Property is 2155sqft on title) The property's unique orientation, with dual access from both Kenilworth Ave and Balmer Dr, is designed to maximize every inch of its footprint. A defining feature is the level and functional nature of the outdoor spaces; from the garden areas to the multiple terraces, the grounds are entirely usable and integrated for seamless entertaining. Moments from the Reservoir path and Silver Lake's premier dining, this home brings together views, modern infrastructure, and a rare, functional outdoor layout in one of Los Angeles' most coveted pockets. (property is 2155sqft on title)





LS





LS









LS





LS









LS





LS





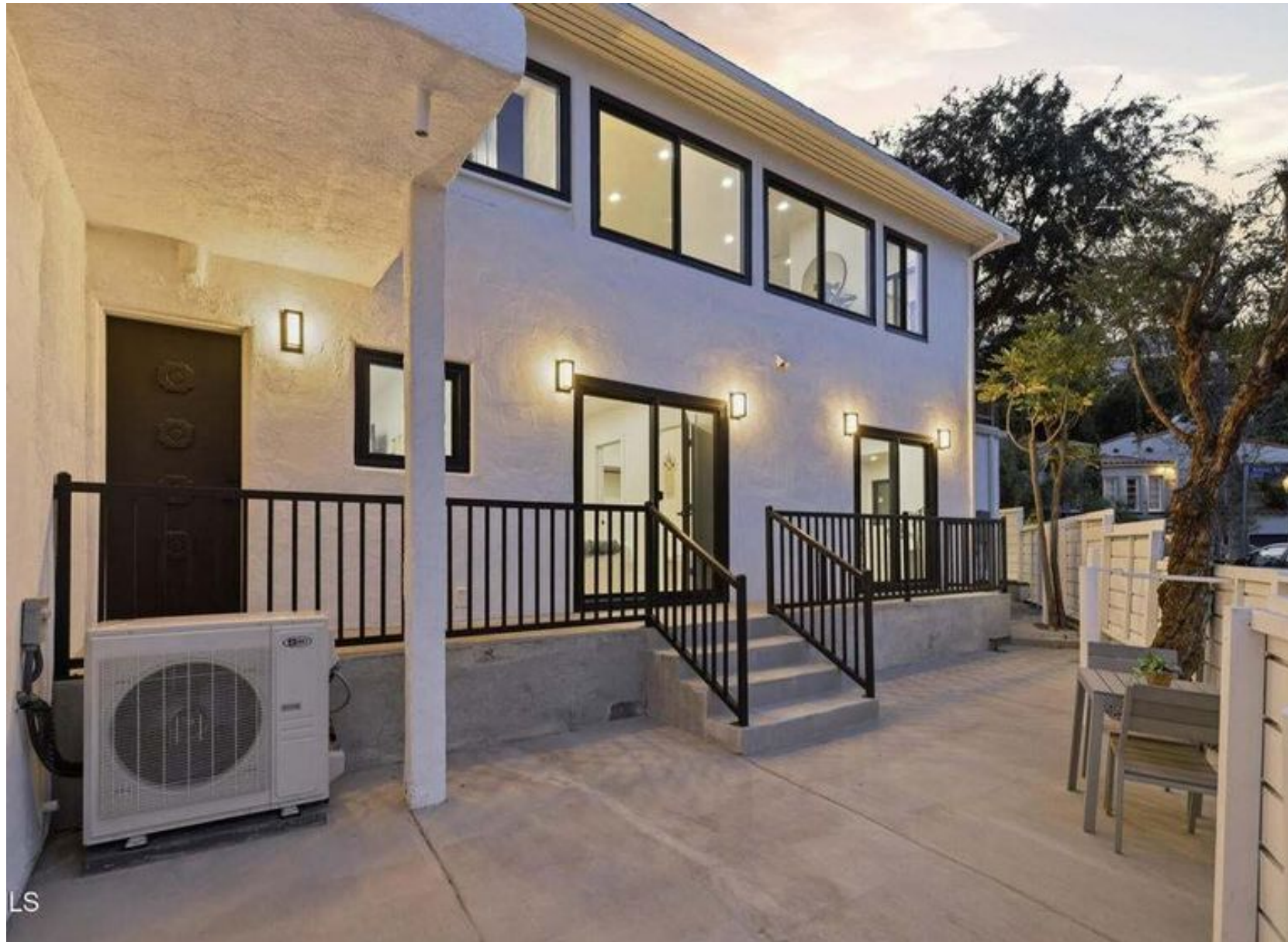
LS





LS





LS













LS

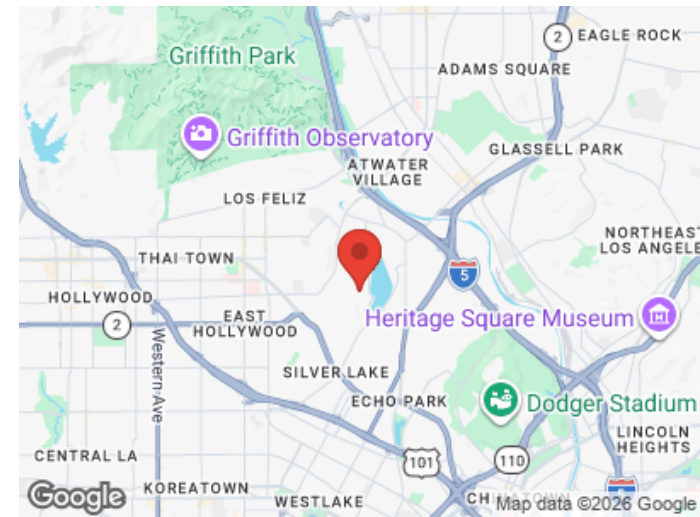
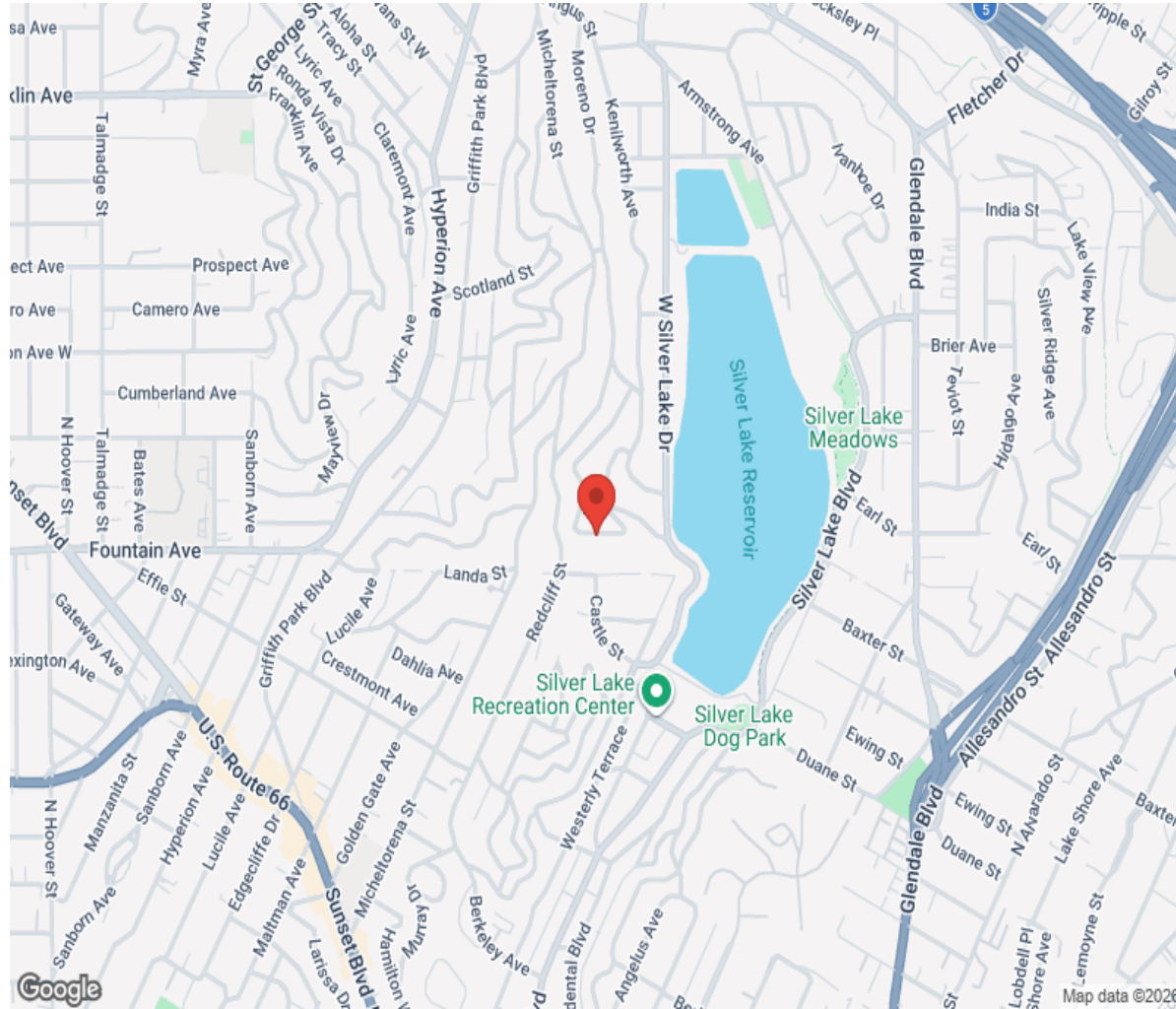


2nd floor





# Location



# Hamptons

INTERNATIONAL

**+44 (0)20 8618 4551**

**[international@hamptons.co.uk](mailto:international@hamptons.co.uk)**

**[www.hamptons-international.com](http://www.hamptons-international.com)**