

# Hamptons

INTERNATIONAL



**451 S Spring Ave, La Grange, IL 60525**

6 🏠 6 🚗

**£960,000**  
**(\$1,277,000)**

## Property details


---



### Key features

- **Cooling: Central A/C**
- **Fireplace Count: 1 Fireplace**
- **Garage Count: 2 Car Garage**
- **Sewer: Public**
- **Special Program: Global Luxury**

### Attributes

-  **Garage**
-  **Refurbished**

**451 S Spring Ave, La Grange, IL 60525**

6 🏠 6 🚗

**£960,000**  
**(\$1,277,000)**

---

## Description

This beautifully renovated and expanded residence, extensively reimagined in 2006, offers the generous and elegant floor plan and livability of a newer custom home on an oversized 75' wide lot in La Grange's prime Historic District. With over 5,700 finished square feet of living space (4,200 above grade and 1,500 below grade), this home delivers an exceptional combination of architectural presence and modern functionality. The home is defined by hardwood flooring, substantial base moldings, generous room sizes, plantation shutters, recessed lighting, 9-foot ceilings, and an abundance of natural light throughout. A fully enclosed front porch with a large picture window overlooks the picturesque, tree-lined street-creating a peaceful and inviting setting for everyday relaxation. The impressive two-story foyer sets the tone, featuring a guest closet, a richly finished cherry entry door with an arched glass detail, and a sweeping staircase with natural wood treads and designer wrought iron balusters overlooking the dramatic living space. The stunning two-story formal living room is bathed in natural light from two skylights and a large picture window and is anchored by an oversized chandelier and a gas log fireplace (2021) with a timeless white mantel and refined dentil molding. Perfectly suited for both entertaining and daily living, the gracious dining room flows seamlessly into a comfortable main-floor family room with serene views of the private backyard and the center music room. The chef's kitchen is a true showpiece, featuring premium Craftsman-style cherry cabinetry with crown molding and glass-front accents, elegant granite countertops, hi-end stainless steel appliances, a generous center island with breakfast bar seating, and an additional peninsula ideal for casual dining or serving. A separate breakfast area with space for a large dining table with adjacent pantry closets offers direct French door access to the backyard deck and patios. Convenient entry to the attached garage and a well-appointed mudroom enhances everyday functionality. The second level offers four spacious bedrooms, three full bathrooms, a wonderful landing with built-in bookcase and a convenient laundry room. The luxurious primary suite is a private retreat, complete with two walk-in closets, two additional closets, a charming Juliet balcony and a spa-inspired bath featuring heated floors, a steam shower, whirlpool tub and double vanity. The third floor provides exceptional flexibility with two additional bedrooms-each with walk-in closets-a shared playroom and a full bathroom. The finished lower level is designed for entertaining, offering a game or craft room, a spacious recreation room with a built-in wet bar complete with a full-size refrigerator and dishwasher and a fifth full bathroom. Outdoors, enjoy three distinct paver patios, including one that doubles as a basketball court-perfect for recreation and gatherings. Ideally located within walking distance to the commuter train, highly regarded schools including Cossitt Elementary, Park Junior High, and Lyons Township High School, as well as downtown La Grange's shops, dining, library, and theater. Waiola Park is just one block away, completing this exceptional offering. A rare opportunity to own a home in La Grange's Historic District offering the space, layout, and modern livability today's buyers are seeking-an offering that truly stands apart in today's market.













© Positive Image













© Positive Image





© Positive Image





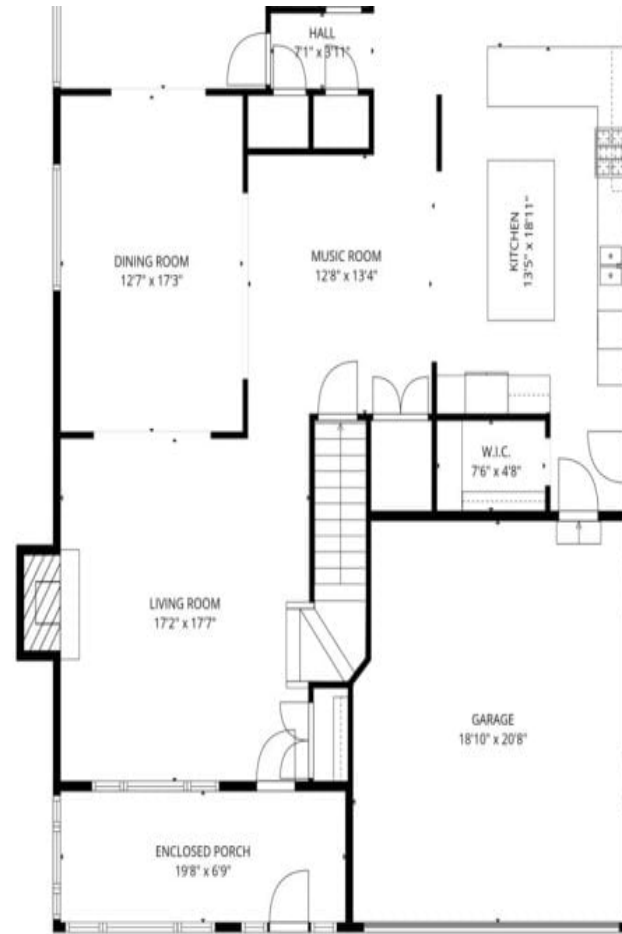
© Positive Image











**TOTAL: 5720 sq. ft**

Basement: 1449 sq. ft, 1st floor: 1581 sq. ft, 2nd floor: 1799 sq. ft, 3rd floor: 891 sq. ft  
 EXCLUDED AREAS: UTILITY: 125 sq. ft, ENCLOSED PORCH: 133 sq. ft, GARAGE: 379 sq. ft,  
 FIREPLACE: 15 sq. ft, OPEN TO BELOW: 312 sq. ft, LOW CEILING: 74 sq. ft,  
 WALLS: 384 sq. ft

FLOOR PLAN CREATED BY CUBICSA APP. MEASUREMENTS DEEMED HIGHLY RELIABLE BUT NOT GUARANTEED.



# Hamptons

INTERNATIONAL

**+44 (0)20 8618 4551**

**[international@hamptons.co.uk](mailto:international@hamptons.co.uk)**

**[www.hamptons-international.com](http://www.hamptons-international.com)**