

Hamptons

INTERNATIONAL



8079 Dana Path, Inver Grove Heights, MN 55076

2  3 

£260,000

(\$340,000)



Property details



Key features

- **Cooling: Central A/C**
- **Fireplace Count: 1 Fireplace**
- **Garage Count: 2 Car Garage**
- **Heating - Fuel Type: Gas**
- **Heating Type: Forced Air**
- **Sewer: Public**
- **Water: City Water**

Attributes

-  **Garage**
-  **Near golf course**

8079 Dana Path, Inver Grove Heights, MN 55076

£260,000

(\$340,000)

2 🏠 3 📄

Description

Don't miss out on this gorgeous, end-unit, 2-bedroom+loft, 4-bathroom townhome in the charming Concord Commons neighborhood in Inver Grove Heights. This spacious multi-level townhouse features a beautiful living room with vaulted ceilings and large windows with great views of the surrounding trees, and you'll enjoy spending time on the deck overlooking the wooded backyard. This townhouse has been well-maintained, and it features a convenient, open floor plan on the main level with wonderful natural light from the large living room windows. The vaulted living room also has a gas fireplace, and the room opens to the kitchen, which features an abundance of cabinetry and countertop space and a great layout for cooking. You'll enjoy gathering at the countertop seating and spending time in this well-laid-out main level space, which includes a convenient half-bath off the front entry. There is a utility room that serves as the entry way from the two-car garage, and includes the added bonus of having the washer and dryer on the main level. The upper level has a bonus office loft area that overlooks the main level living room, and it also has 2 bedrooms, including a spacious primary bedroom. You'll enjoy the privacy of the primary bedroom, which features a walk-in closet and an en suite bathroom with a large vanity, relaxing soaking tub, and separate shower. The upper level has another full bathroom, and this townhome's lower level includes a spacious family room, a 3/4 bathroom, and another walk-in closet for additional storage. Spend more time doing the things you enjoy with the lawn and snow removal done for you by living in this move-in ready townhome. You'll love the convenient Inver Grove Heights location and proximity to great nearby restaurants, excellent outdoor recreation with trails and parks, golf course, dog park, all situated close by the Mississippi River.























Plan View Created By Colson Inc. Measurements Derived From High Quality Aerial Satellite Data











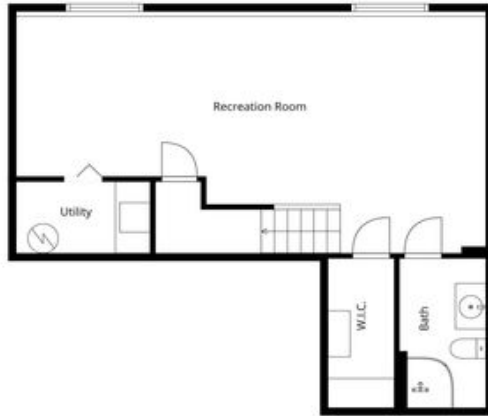












Plan created by Colson&Co. Measurements shown highly reliable but not guaranteed.

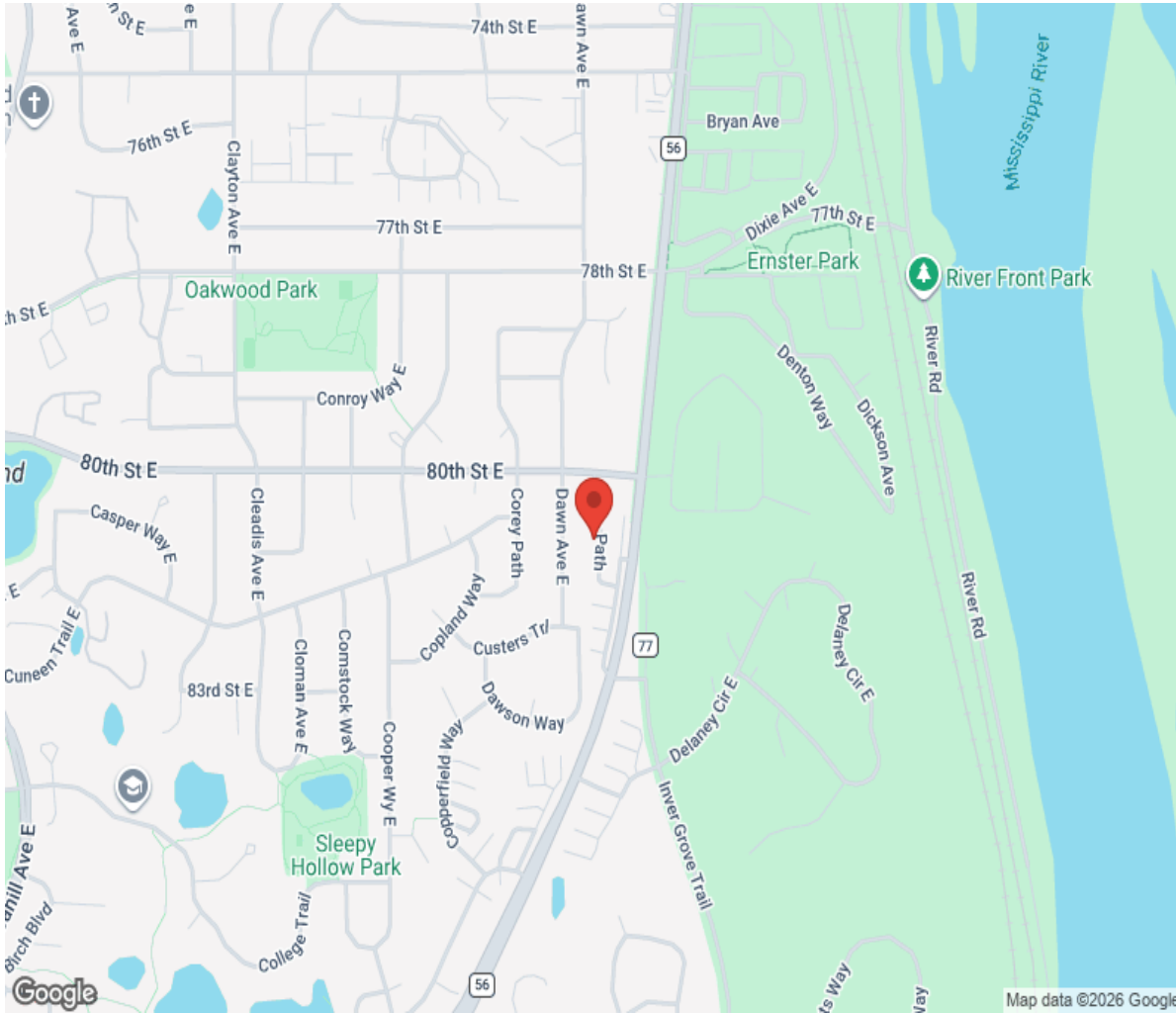








Location



Hamptons

INTERNATIONAL

+44 (0)20 8618 4551

international@hamptons.co.uk

www.hamptons-international.com