

Hamptons

INTERNATIONAL



504 Mississippi River Blvd S, Saint Paul, MN 55116

4 🏠 2 🚗

£980,000
(\$1,300,000)

Property details



Key features

- **Cooling: No A/C**
- **Fireplace Count: 2 Fireplaces**
- **Garage Count: 2 Car Garage**
- **Heating - Fuel Type: Gas**
- **Sewer: Public**
- **Water: City Water**
- **Special Program: Global Luxury**

Attributes

 **Garage**

504 Mississippi River Blvd S, Saint Paul, MN 55116

£980,000
(\$1,300,000)

4  2 

Description

Remarkable 1920s Tudor overlooking the Mississippi River on one of St. Paul's most sought-after streets. Step through the arched front entry into a home rich with character and timeless appeal. The main level offers exceptional space for both everyday living and entertaining, featuring a spacious living room with a full masonry fireplace, a sun-drenched southwest-facing sunroom, and a formal dining room with classic corner built-ins. The kitchen includes custom cabinetry, plus a built-in breakfast nook. Off the kitchen there is a bathroom and a L-shaped rear addition overlooking the private yard -currently an indoor hot tub space - although bring your ideas for additional uses. Upstairs, the second level hosts three bedrooms, a full bath, and access to a rooftop sitting area. The third floor provides a private fourth bedroom, a bathroom with a vintage clawfoot tub, and additional storage. The lower level expands your living space with a generous family room featuring tile floors, recessed lighting, and a cozy wood-burning fireplace. A dedicated laundry area and abundant storage complete the basement. Historic charm shines throughout with hardwood floors on all three levels, crown molding, unpainted natural woodwork, elegant archways, a solid stucco exterior, and the original clay tile roof. Set on an impressive ~75x200 lot, the outdoor space is truly magical-offering scenic river views in the front and serene, private surroundings in the backyard. Step outside to enjoy miles of walking and biking trails just beyond your front door. Additional highlights include an oversized two-car garage and a prime location just minutes from local eateries, University of St. Thomas, St. Catherine University, Highland Park Village, Shadow Falls Park, and easy access to major highways. A rare opportunity to own a piece of history in one of St. Paul's most iconic settings. Schedule your tour today.

































































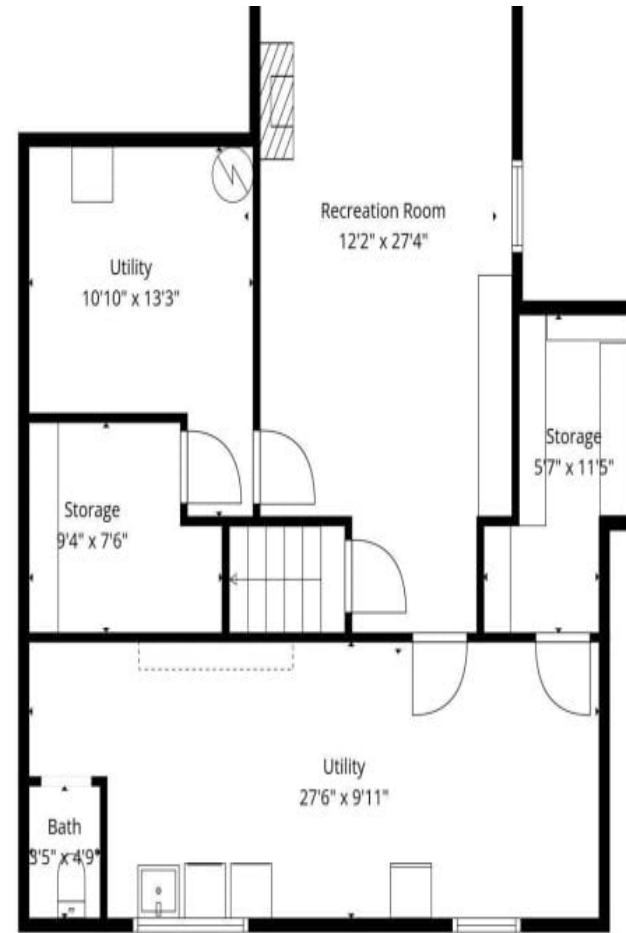
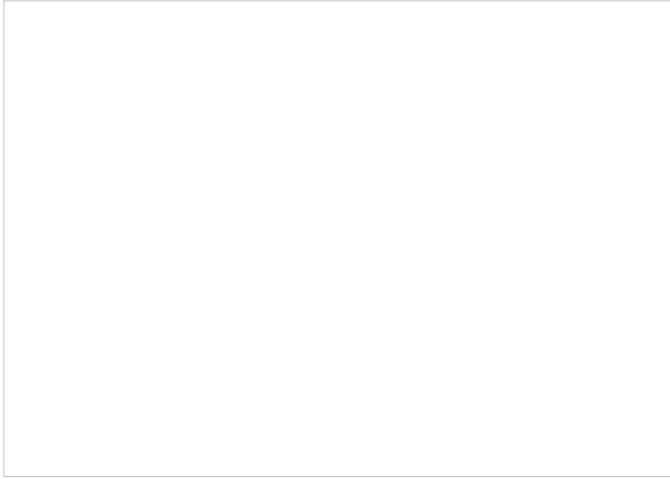


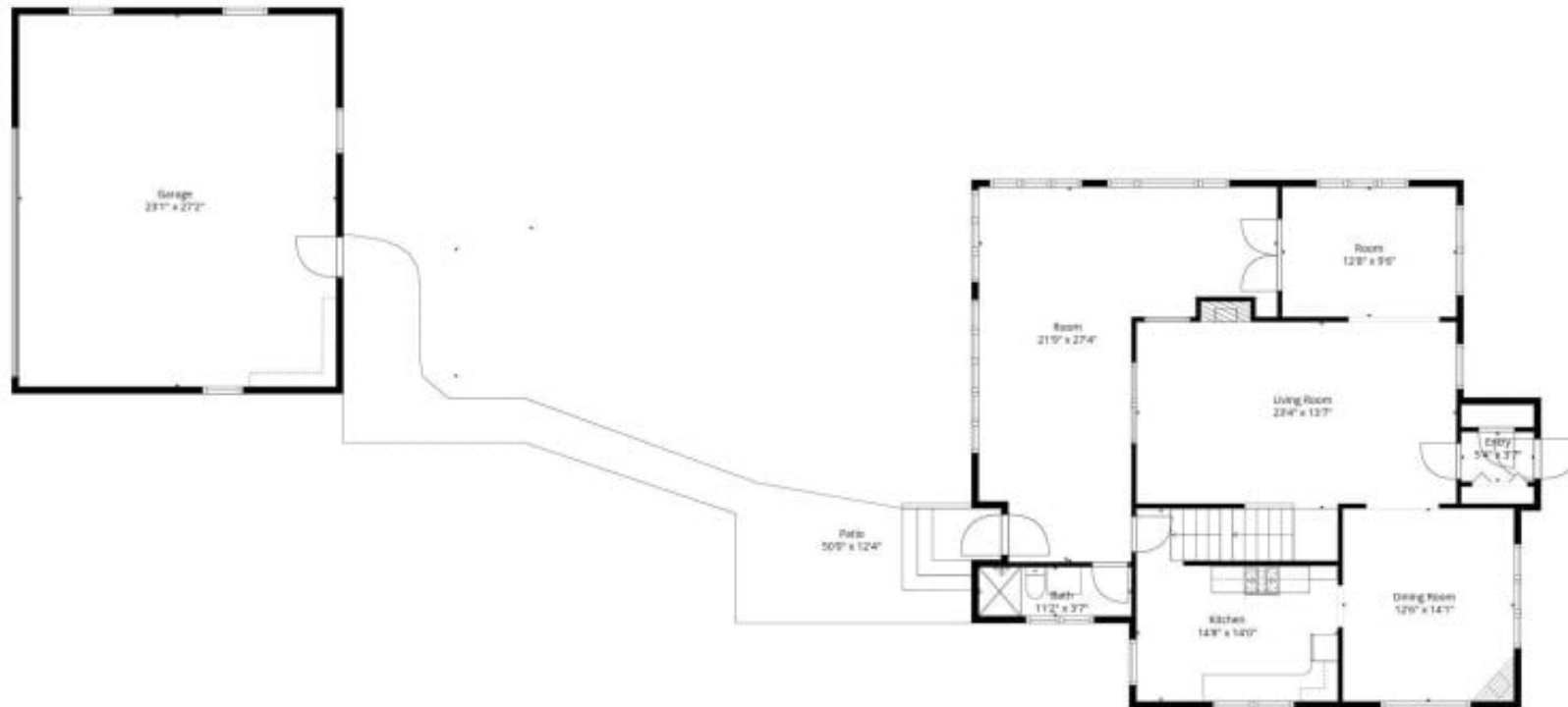












Total: 2888 sq. ft

Basement 1: 364 sq. Ft, Basement 2: 1327 sq. Ft, Basement 3: 837 sq. Ft, Basement 4: 360 sq. ft

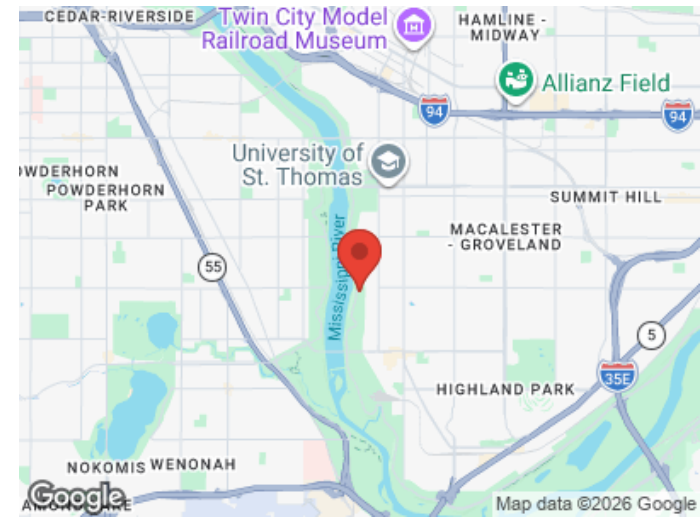
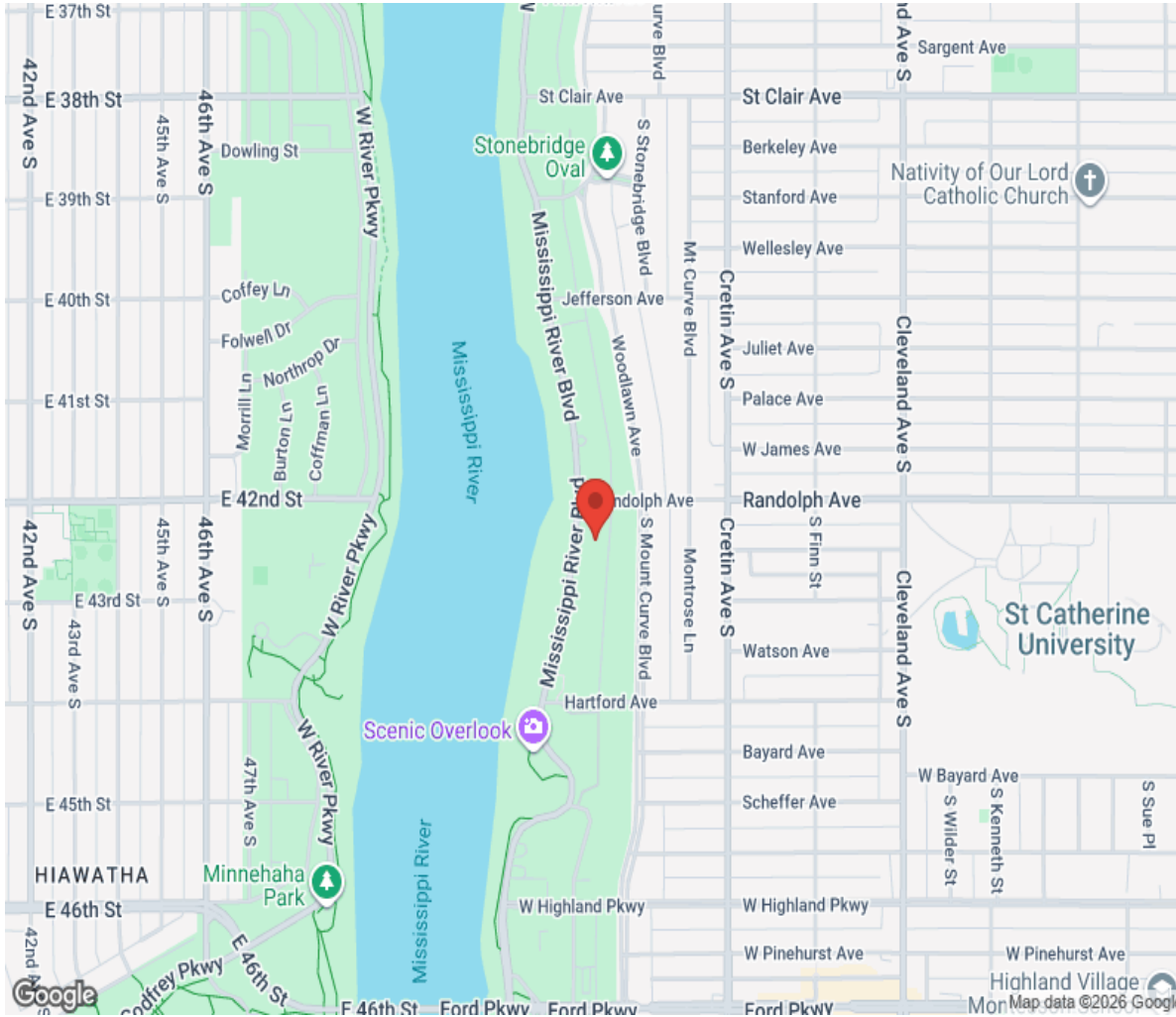
Excluded Areas: Utility: 379 sq. Ft, Storage: 124 sq. Ft, Garage: 628 sq. Ft,

Patio: 320 sq. Ft, Terrace: 443 sq. Ft, Low Ceiling: 46 sq. Ft,

Walls: 322 sq. ft

Floor Plan Created By Cubicso App. Measurements Derived Highly Reliable But Not Guaranteed.

Location



Hamptons

INTERNATIONAL

+44 (0)20 8618 4551

international@hamptons.co.uk

www.hamptons-international.com