

# Hamptons

INTERNATIONAL



**67 Maple St, Milton, MA 02186**

4 🏠 2 🏡

**£790,000**  
**(\$1,050,000)**

## Property details

---



### Key features

- **Fireplace Count: 1 Fireplace**
- **Heating Type: Heat Pump**
- **Sewer: Public**
- **Water: City Water**

**67 Maple St, Milton, MA 02186**

4 🏠 2 📄

**£790,000**  
**(\$1,050,000)**

## Description

Introducing this one-of-a-kind Milton Village Victorian, a home that greets you with warmth, character, and timeless charm. This solid 4-bedroom, 2-bath home offers exceptional space in one of Milton's most popular neighborhoods, notice all the details, including slate roof. They don't build home like this anymore! A covered front porch welcomes you into a beautiful entryway, setting the tone for the gorgeous period details throughout. The open first-floor layout features a spacious living room and dining room area, high ceilings, and abundant natural light, blending classic architectural detail with everyday comfort. A spacious unique finished third floor offers endless possibilities, including a potential primary suite, while the partially finished walk-out lower level office space adds even more flexibility. Ideally located just a short stroll to Steel & Rye, Lower Mills, and the MBTA trolley connection, this is a rare opportunity on a truly fabulous street.























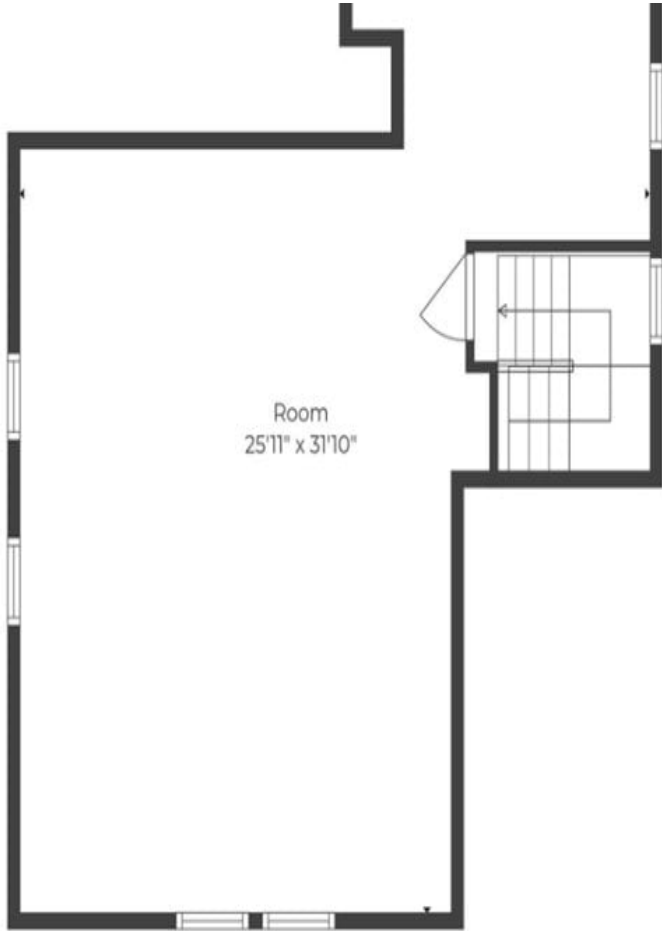
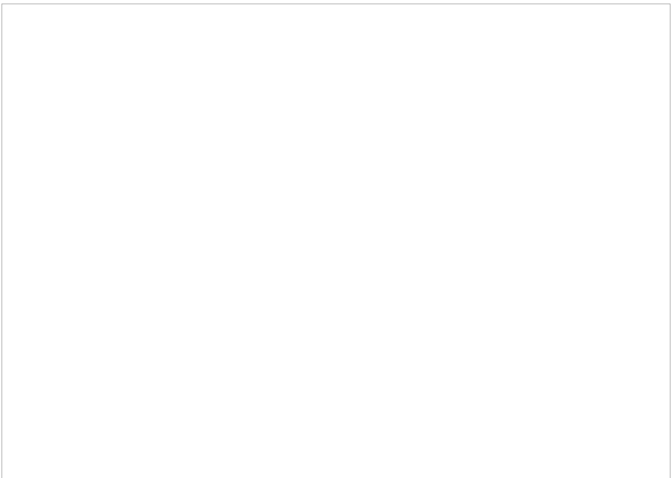


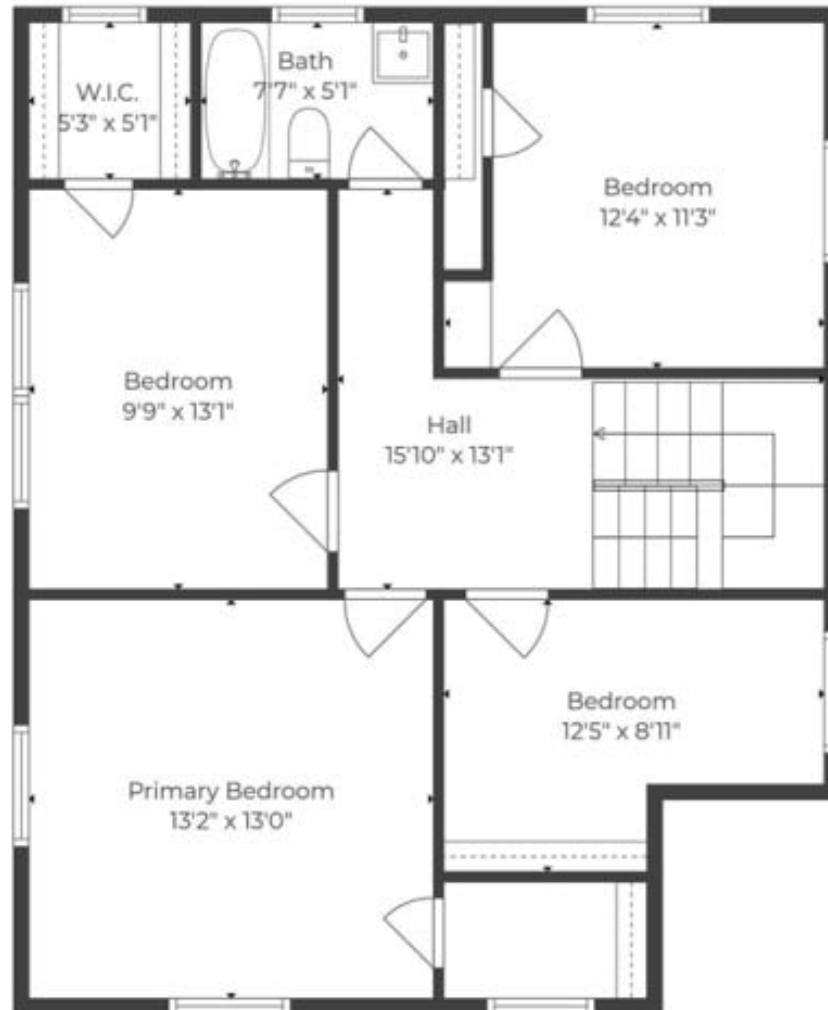










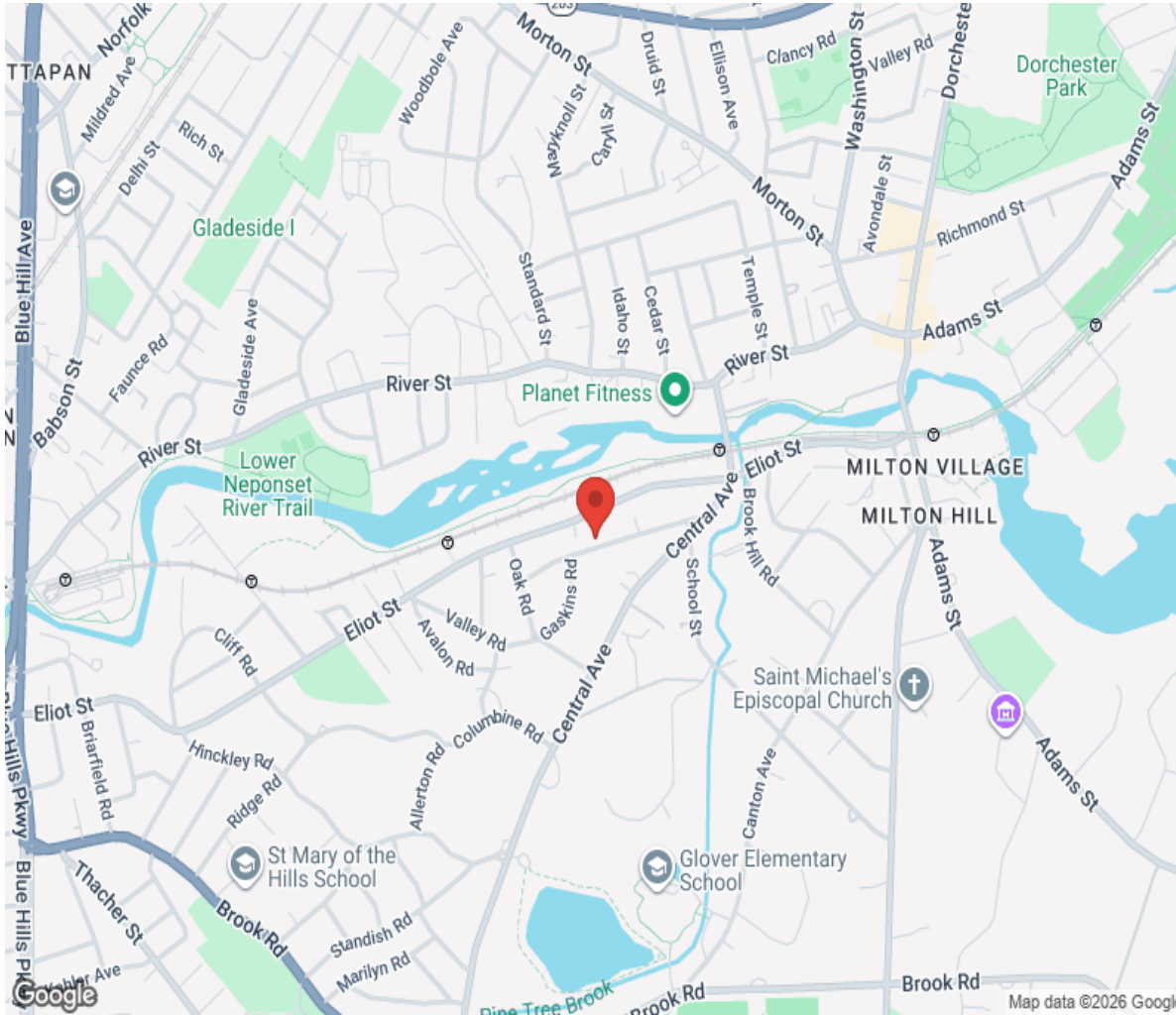


TOTAL: 2491 SQ. FT  
BASEMENT: 270 SQ. FT, 1ST FLOOR: 845 SQ. FT, 2ND FLOOR: 785 SQ. FT, 3RD FLOOR: 591 SQ. FT  
EXCLUDED AREAS: SCREENED PORCH: 97 SQ. FT, WALLS: 236 SQ. FT

Sizes & Dimensions Are Approximate. Actual May Vary



# Location



# Hamptons

INTERNATIONAL

**+44 (0)20 8618 4551**

**[international@hamptons.co.uk](mailto:international@hamptons.co.uk)**

**[www.hamptons-international.com](http://www.hamptons-international.com)**