

# Hamptons

INTERNATIONAL



**215 Ruby (Diamond) QU St. Croix St. Croix**

4  3 

**£500,000**

**(\$650,000)**

## Property details



### Key features

- **Living Area: 1900**
- **Lot Size: 8878**
- **Terrain: Hillside2**
- **Year Built: 2026**
- **Furnished: Appliances Only**
- **Zoning: R-3**
- **Amenities: Garage**
- **Flooring: Tile**
- **Road: Asphalt**
- **Roof: Concrete3**

### Attributes

 **Garage**

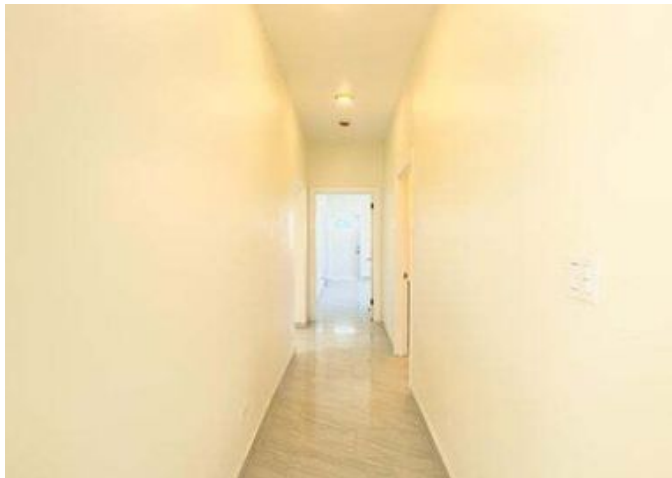
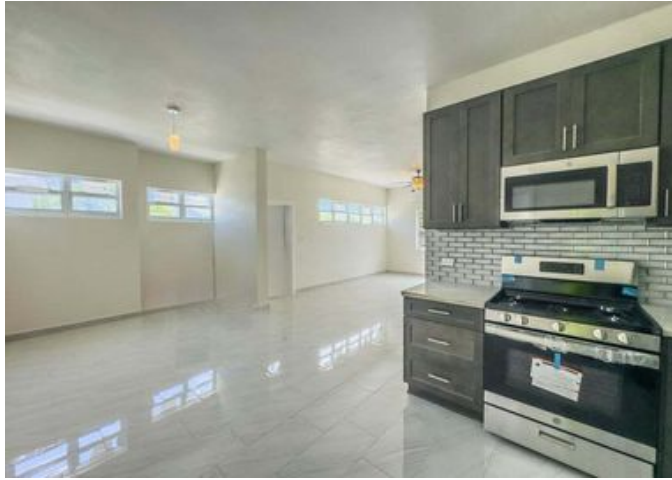
## 215 Ruby (Diamond) QU St. Croix St. Croix

4  3 

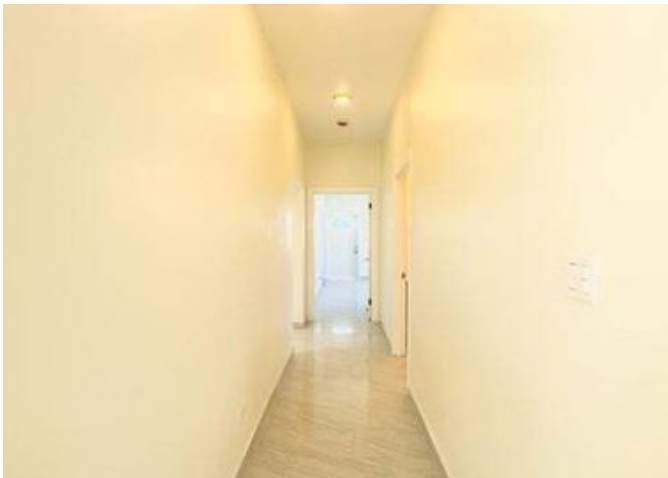
**£500,000**  
**(\$650,000)**

## Description

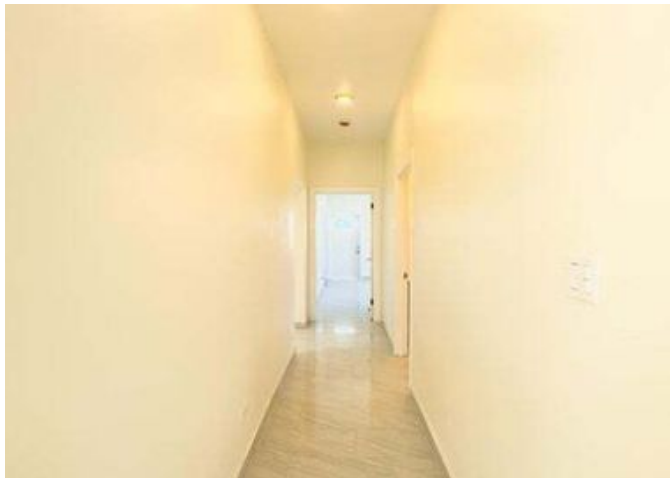
St. Croix Brand-new 2026 construction in Estate Ruby, Christiansted, never occupied. This solid concrete masonry multi-family home, including a concrete roof, features two fully independent units with private entrances and separate utilities. Upper unit: 3BR/2BA with open-concept living, modern kitchen, stainless appliances, en-suite primary bath, and garage access. Lower unit: 1BR/1BA, move-in ready. Both units feature large-format polished porcelain tile, individual mini-split A/C, hurricane-rated impact windows and doors throughout. Cistern included. No HOA. Hillside setting near Gov. Juan F. Luis Hospital and Christiansted amenities.



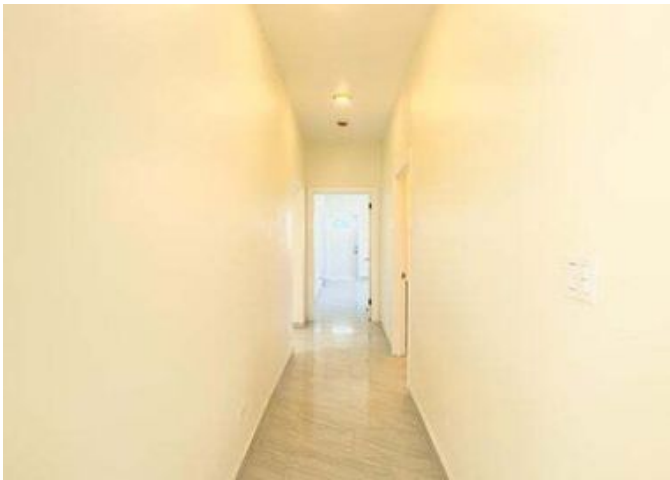




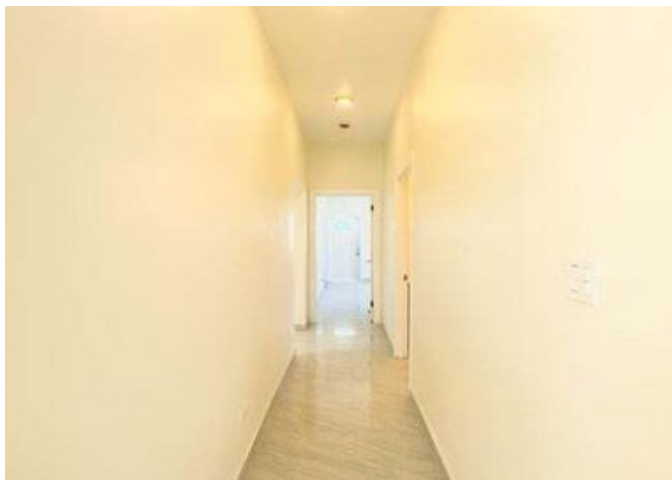




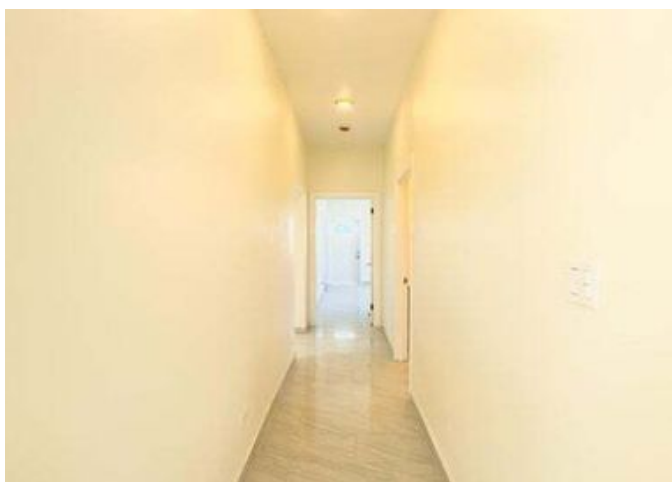






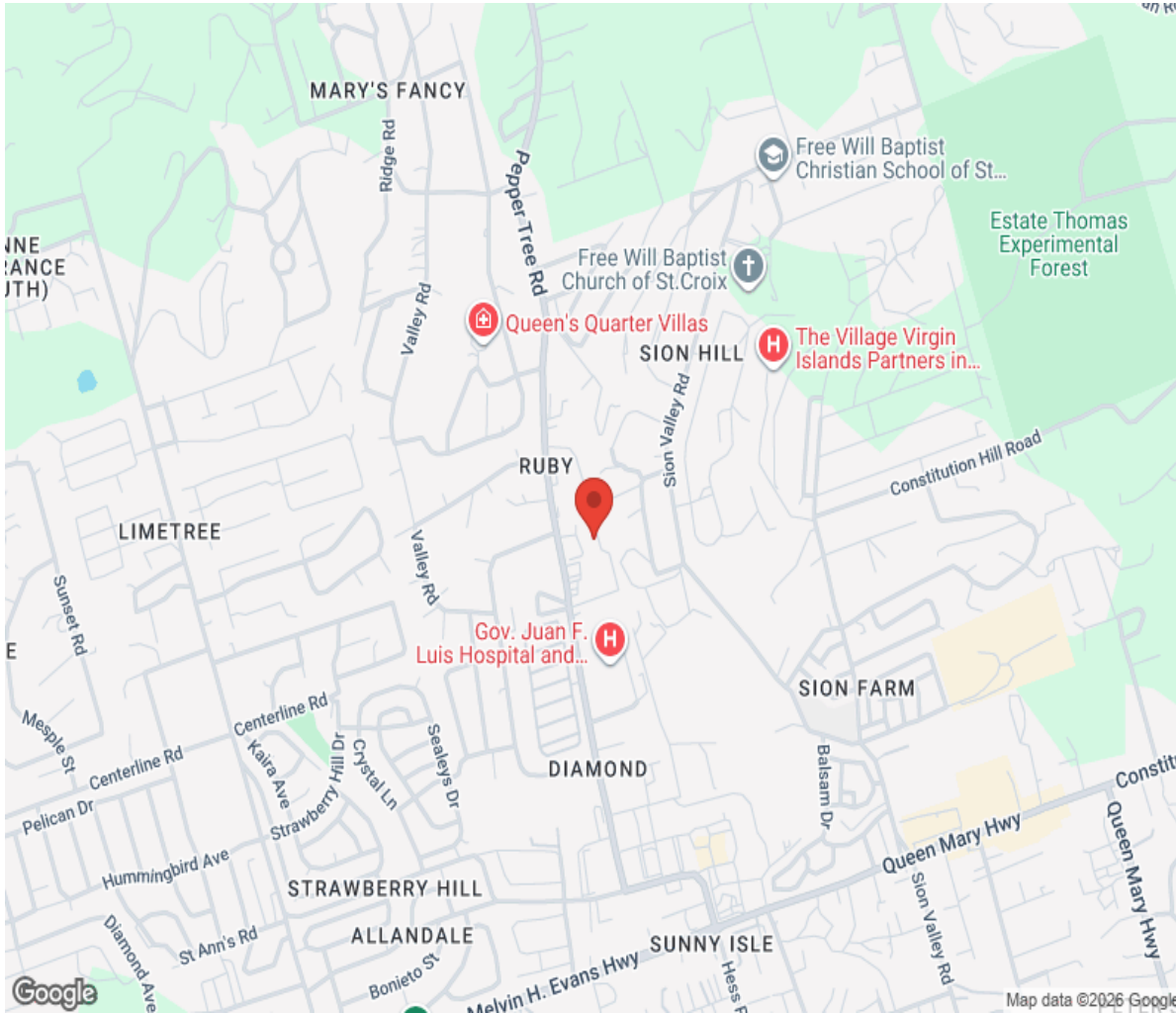








# Location



# Hamptons

INTERNATIONAL

**+44 (0)20 8618 4551**

**[international@hamptons.co.uk](mailto:international@hamptons.co.uk)**

**[www.hamptons-international.com](http://www.hamptons-international.com)**