

Hamptons

INTERNATIONAL



4800 Overseas Hwy, Marathon, FL 33050

4 🏠 5 🚗

£2,200,000

(\$2,950,000)

Property details



Key features

- **Basement: None**
- **Pool Description: Pool**
- **Special Program: Global Luxury**

Attributes

- **Private parking**

4800 Overseas Hwy, Marathon, FL 33050

4 🏠 5 📄

£2,200,000
(\$2,950,000)

Description

Tons of upgrades, gorgeous open water views, and the very best of Florida Keys waterfront living -- you have to come see Lot 2 at Shipman Point. This brand-new waterfront home is positioned just two in from open water, offering beautiful views, excellent boating access, and a protected canal setting for your vessel. Boaters will appreciate approximately 63 feet of dockage, canal protection, a hardened shoreline secured by both a concrete retaining wall and concrete seawall, plus room for a boat lift. Whether heading out for a day on the water or enjoying the peaceful views from home, this location is designed for true Keys living. Inside, the home is fully furnished and professionally designed, with bright coastal finishes, tile flooring throughout the entire downstairs level, a spacious kitchen with a gas stove, double sink, and a well-appointed layout for entertaining. One of the ensuite bedrooms also features an additional private porch, creating another relaxing space to take in the island lifestyle. The exterior is complete with landscaping, a large concrete pad driveway with turf accents, and a clean, modern coastal look with ample parking. With weekly rentals permitted, this property offers outstanding versatility as a primary residence, second home, or income-producing investment. Updated photos coming soon.



































































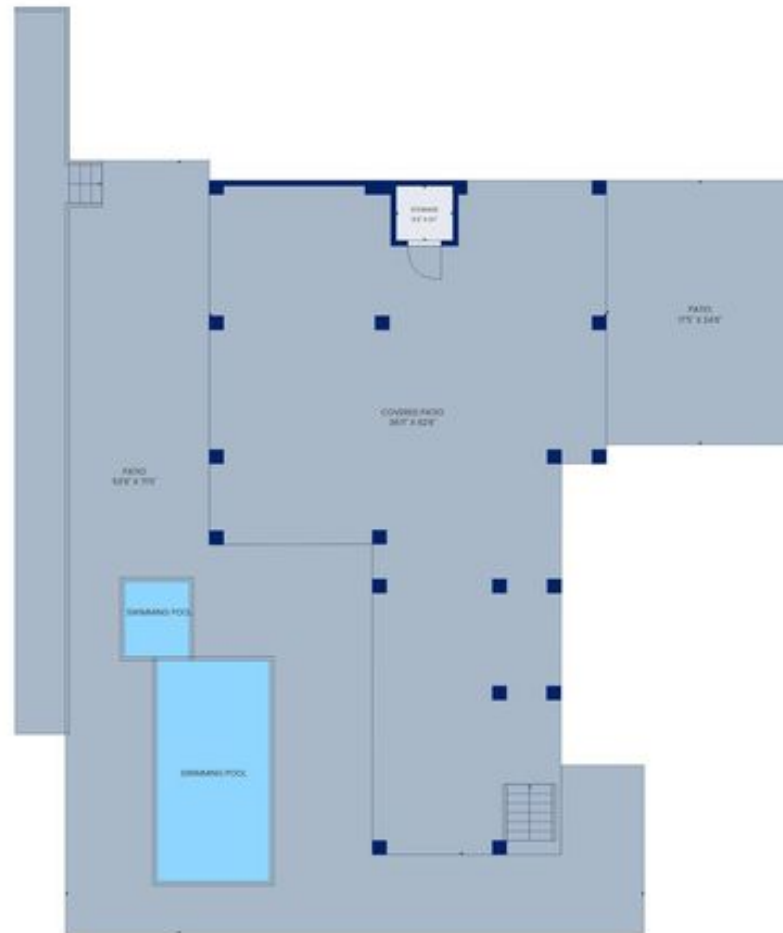
TOTAL: 2471 sq. ft
Basement: 0 sq. ft. 1st floor: 1244 sq. ft. 2nd floor: 1227 sq. ft.



3RD FLOOR



TOTAL: 2471 sq. ft
Basement: 0 sq. ft. 1st floor: 1244 sq. ft. 2nd floor: 1227 sq. ft



TOTAL: 2471 sq. ft

Basement: 0 sq. ft, 1st floor: 1244 sq. ft, 2nd floor: 1227 sq. ft

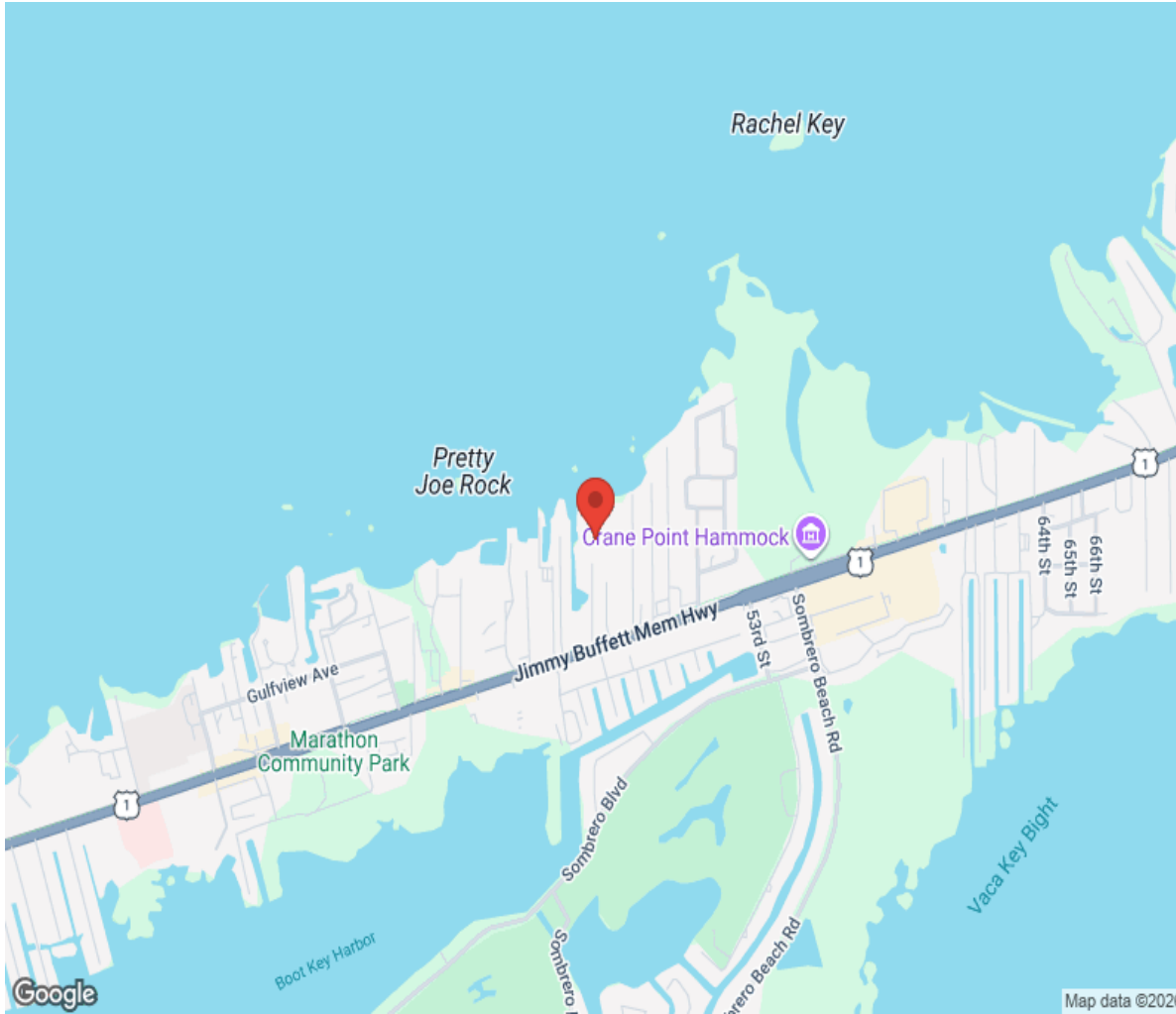
EXCLUDED AREAS: STORAGE: 76 sq. ft, PATIO: 2249 sq. ft, COVERED PATIO: 1696 sq. ft,

BALCONY: 474 sq. ft, PORCH: 90 sq. ft, WALLS: 168 sq. ft

Measurements Deemed Highly Reliable But Not Guaranteed



Location



Hamptons

INTERNATIONAL

+44 (0)20 8618 4551

international@hamptons.co.uk

www.hamptons-international.com