

# Hamptons

INTERNATIONAL



**638 Anne Ct, Bolingbrook, IL 60440**

4 🏠 3 🏠

**£360,000**

**(\$469,999)**

## Property details



### Key features

- **Cooling: Central A/C**
- **Fireplace Count: 1 Fireplace**
- **Garage Count: 2 Car Garage**
- **Sewer: Public**
- **Water: City Water**

### Attributes

-  **Garage**
-  **Gym**

**638 Anne Ct, Bolingbrook, IL 60440**

**£360,000**  
**(\$469,999)**

4  3 

## Description

**\*\*\*MULTIPLE OFFERS RECEIVED. HIGHEST & BEST DUE BY SUNDAY, MAY 3rd\*\*\*** Welcome to 638 Anne Court, a beautifully maintained 4-bedroom, 2.5-bathroom two-story tucked into a quiet cul-de-sac in one of Bolingbrook's most established neighborhoods. With a newer roof (2023) and approximately 3,117 total square feet across three thoughtfully designed levels, this home delivers the space, light, and flexibility today's families are searching for, and it is truly move-in ready. Step inside through the elegant double-door entry into a soaring two-story foyer that sets the tone for what follows. The heart of the home is an extraordinary two-story family room anchored by a marble-surround gas fireplace, twin skylights, and a wall of windows that flood the space with natural light. A dramatic open-to-below overlook from the second floor adds architectural drama you simply do not find at this price point. Entertaining flows effortlessly across the main level: a formal living room at the front of the home, a separate formal dining room, a sunlit eat-in kitchen with stainless appliance package and glass mosaic backsplash, a charming breakfast nook with deck access, AND a dedicated home office with bay window, perfect for today's hybrid work-from-home lifestyle. Newer luxury vinyl plank flooring, fresh neutral paint, and updated lighting carry through the entire main level. Upstairs, the private primary retreat features a soaring cathedral ceiling, dual skylights, walk-in closet, and an ensuite bath with double vanity, jetted soaking tub, and separate shower. Three additional generously sized bedrooms and a full hall bath round out the second floor. Downstairs, a partially finished basement adds a massive recreation room plus bonus flex space, ideal for a home gym, playroom, media room, or guest suite. Step outside to a sprawling composite deck overlooking a fully fenced backyard, your private setting for summer barbecues and weekend mornings with coffee. Additional highlights include an attached 2-car garage with extended driveway, mature landscaping, and a brick paver walkway leading to the front entry. Located in sought-after Bolingbrook with quick access to I-355 and I-55, top-rated shopping and dining at The Promenade, Bolingbrook Park District amenities, and an easy commute to downtown Chicago. Homes of this size and condition on cul-de-sac lots rarely come available. Schedule your private showing today.



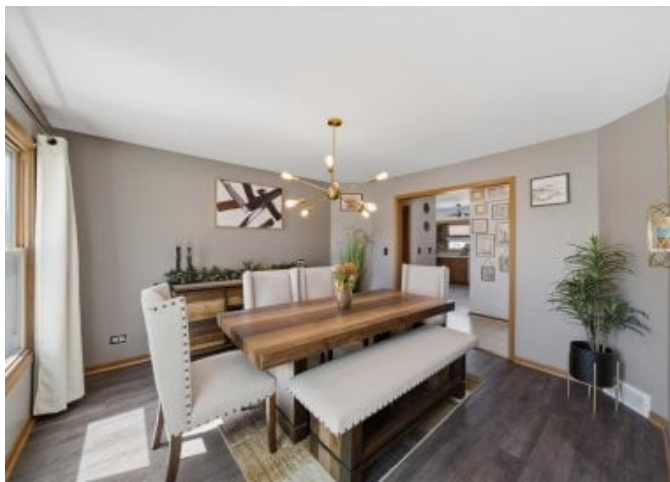












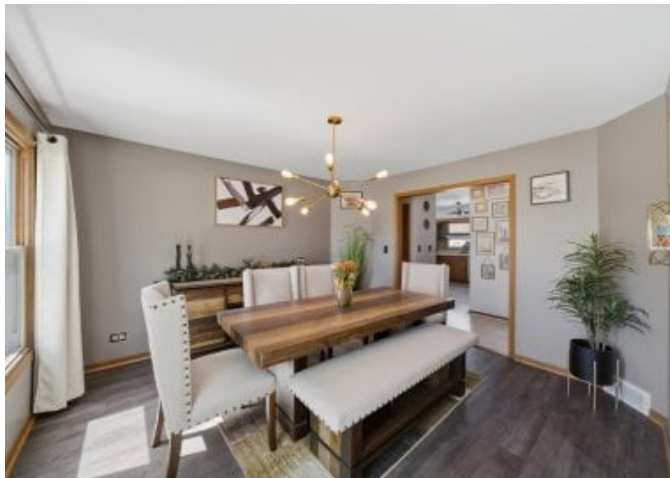




















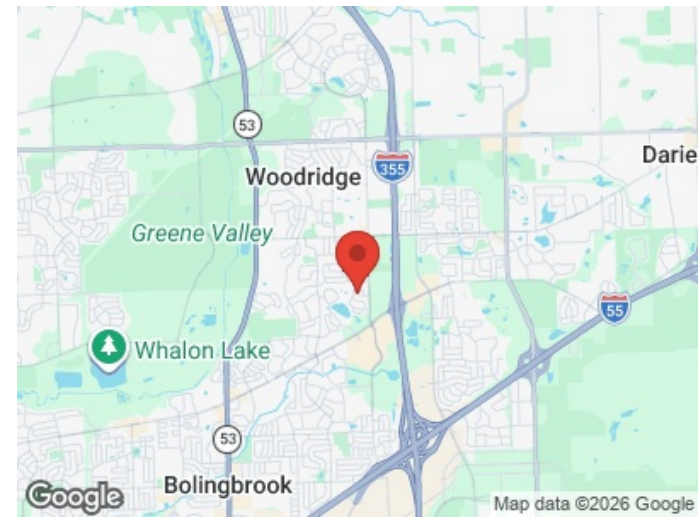
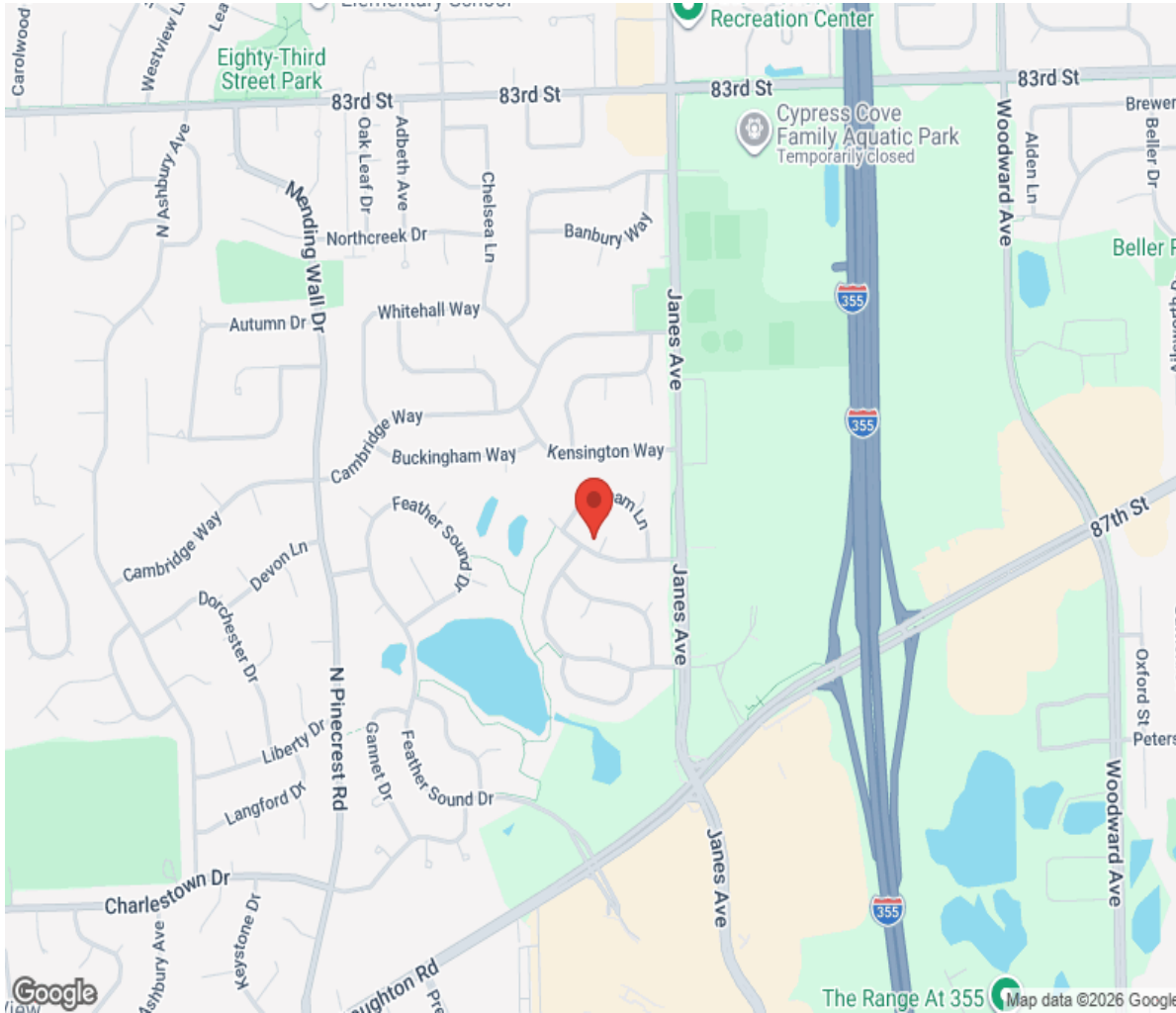


**Total: 3117 sq. ft**

Basement: 748 sq. Ft, 1st Floor: 1329 sq. Ft, 2nd Floor: 1040 sq. ft  
Excluded Areas: Room: 11 sq. Ft, Low Ceiling: 356 sq. Ft, Utility: 186 sq. Ft,  
Garage: 392 sq. Ft, Fireplace: 10 sq. Ft, Open To Below: 298 sq. Ft,  
Walls: 280 sq. ft

Floor Plan Created By Prestige Real Estate Images. Measurements Deemed Highly Reliable But Not Guaranteed.

# Location



# Hamptons

INTERNATIONAL

**+44 (0)20 8618 4551**

**[international@hamptons.co.uk](mailto:international@hamptons.co.uk)**

**[www.hamptons-international.com](http://www.hamptons-international.com)**