

Hamptons

INTERNATIONAL



16 Shipley Cir, Westford, MA 01886

5 𠂆 4 𠂆

£1,040,000

(\$1,388,000)

Property details



Key features

- **Garage Count: 2 Car Garage**
- **Location: Lakefront**
- **Sewer: Private**
- **Fireplace Count: 2 Fireplaces**
- **Cooling: Central A/C**
- **Water: City Water**
- **Special Program: Global Luxury**

Attributes

 **Garage**

16 Shipley Cir, Westford, MA 01886

5  4 

£1,040,000
(\$1,388,000)

Description

Presenting 16 Shipley Cir at the desirable Lakeside Meadows subdivision. This magnificent residence, sitting on a 37,026 Sq. Ft. lot, has been meticulously remodeled with high-quality craftsmanship & attention to detail. Spanning 4 beautifully finished levels, it offers the perfect blend of luxury & functionality. The main level features a formal living room with a cozy fireplace, dining room, a chef's kitchen with top-of-the-line luxury appliances, quartz countertops, custom cabinetry, kitchen island & dining area, an incredible family room with fireplace, a home office, mud room & a 1/2 bath. The 2nd level offers 4 spacious bedrooms, including a stunning primary suite with lounge room, huge walk-in closet & gorgeous private bath with dual showers & soaking tub. A 2nd full bath completes this floor. The 3rd floor offers a huge bonus space with a full private bath, ideal as a 5th bedroom or playroom. Oversized finished basement with flexible living space & a huge 2-car garage. Bedroom 11.83ft x 13.08ft Bedroom 13.42ft x 13.0ft Bedroom 8.58ft x 11.58ft Dining Room 13.75ft x 13.67ft Family Room 15.08ft x 17.25ft Kitchen 13.75ft x 25.42ft Living Room 13.5ft x 13.67ft Master Bedroom 18.92ft x 36.58ft























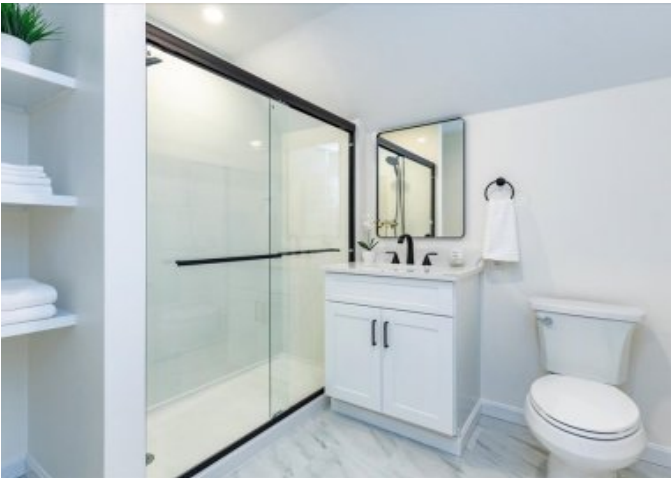














Location



Hamptons

INTERNATIONAL

+44 (0)20 8618 4551

international@hamptons.co.uk

www.hamptons-international.com