

Hamptons

INTERNATIONAL



©2026 Hive MLS

502 Foxfield Ct, Wilmington, NC 28411

3  2 

£280,000

(\$369,900)



Property details



Key features

- **Basement: None**
- **Garage Count: 2 Car Garage**
- **Garage Description: Garage**

Attributes

-  **Garage**
-  **Near to beach**

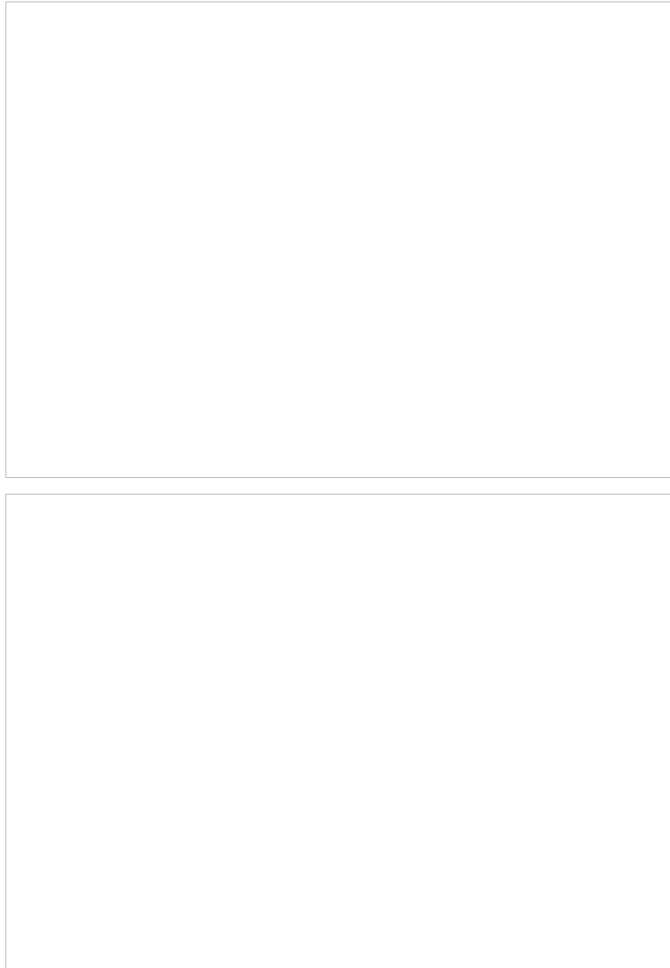
502 Foxfield Ct, Wilmington, NC 28411

£280,000
(\$369,900)

3  2 

Description

Tucked on a corner lot in the welcoming Holly Field at West Bay Estates neighborhood, 502 Foxfield Court offers the kind of easy, one-level coastal living that makes Wilmington such a remarkable place to call home. Whether you are spending a Sunday morning at the Wrightsville Beach farmer's market or catching a weeknight dinner along the Cape Fear Riverwalk, this address puts you right in the middle of everything, without the chaos. Step inside and the bright, open floor plan immediately sets the tone. Vaulted ceilings and fresh paint colors create an airy, sunlit feel throughout, while gleaming wood flooring carries you seamlessly from the living room through the dining area and into the well-appointed kitchen. White cabinetry lines the walls, a center island offers additional seating, and the breakfast bar makes morning coffee a genuine ritual rather than a routine. A glass sliding door off the dining area opens to a patio and a spacious, privacy-fenced backyard, an ideal setup for grilling out, letting the dog run, or simply unwinding after a long beach day. A custom pantry in the laundry room with pull-out drawers, built-in shelving make organization effortless, and all appliances convey, including the refrigerator, built-in microwave, updated dishwasher, and GE washer and dryer. The generous owner's suite features a walk-in closet and a thoughtfully designed bath with double vanity sinks separated from the toilet and shower area. Two additional bedrooms share a full bath, making the layout as functional as it is comfortable. Practical upgrades include an updated HVAC system, roof replaced in 2019, front yard irrigation, an ADT security system, and the HOA maintains front yard maintenance. The two-car garage and bike-friendly streets complete a picture of low-maintenance coastal living done right. Home is located just ten minutes from Wrightsville Beach and a short drive to historic downtown Wilmington's art galleries, restaurants, and waterfront. Don't miss this opportunity to call 502 Foxfield home!













26 Hive MLS







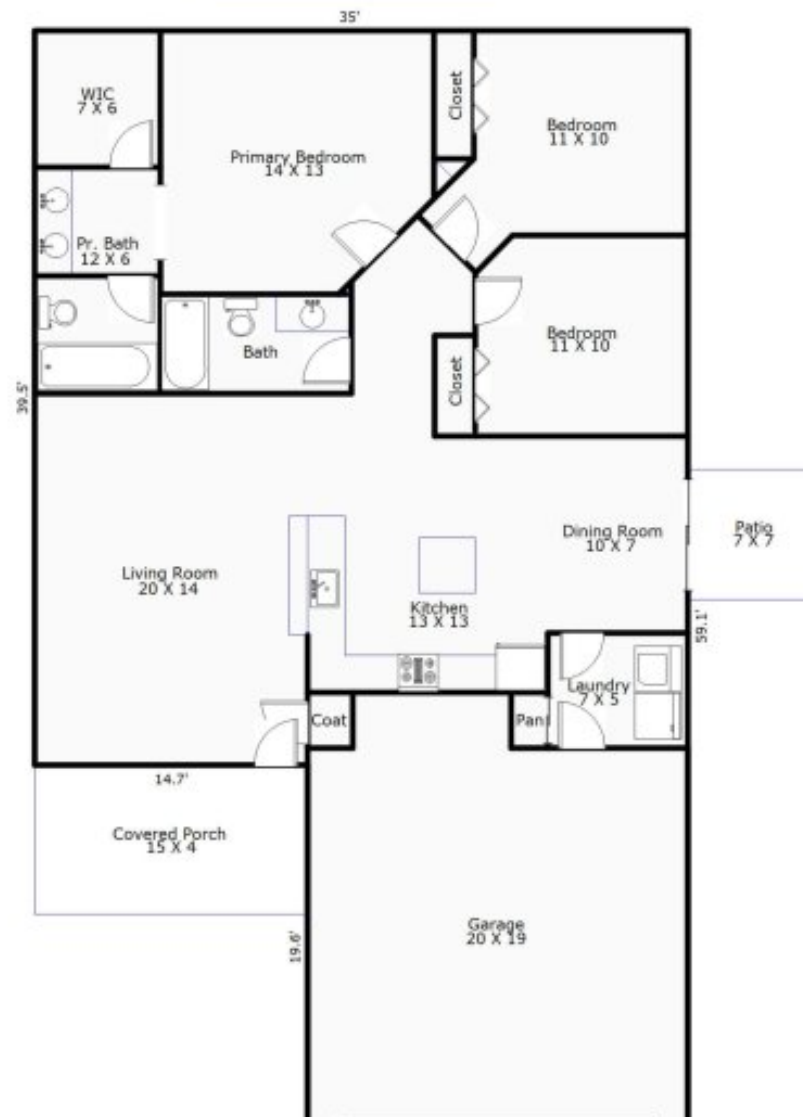


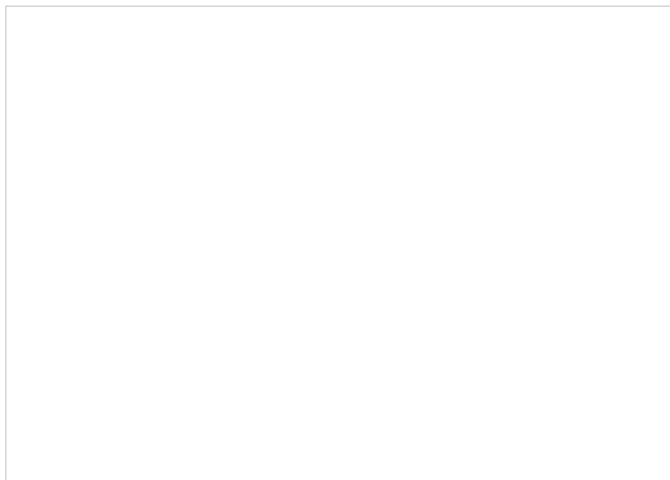


26 Hive MLS



502 Foxfield Court
1342 Square Feet







26 Hive MLS



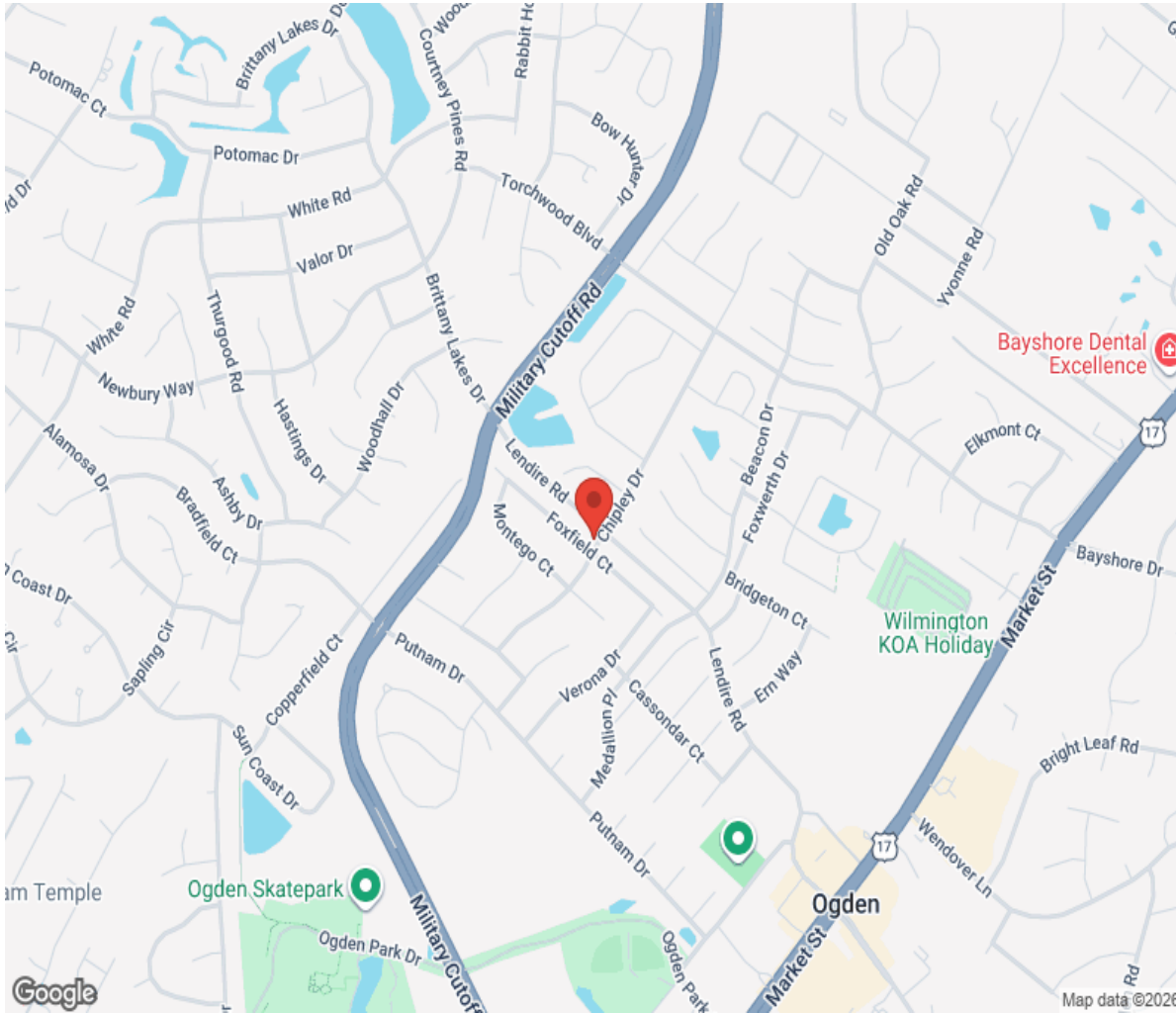






6 Hive MLS

Location



Hamptons

INTERNATIONAL

+44 (0)20 8618 4551

international@hamptons.co.uk

www.hamptons-international.com