

Hamptons

INTERNATIONAL



533 Rivage Promenade, Wilmington, NC 28412

4  4 

£730,000

(\$975,000)

Property details



026 Hive MLS

533 Rivage Promenade, Wilmington, NC 28412

£730,000
(\$975,000)

4 🏠 4 🚗

Key features

- **Basement: None**
- **Garage Count: 3 Car Garage**
- **Garage Description: Garage**
- **Special Program: Global Luxury**

Attributes

- 🏠 **Garage**
- 🏌️ **Near golf course**
- 🏖️ **Near to beach**

Description

Experience golf course living with custom craftsmanship and standout entertaining spaces in this luxury Beau Rivage home. Overlooking the Beau Rivage Golf Course, this custom-built property offers 3,700 square feet with 4 bedrooms and 4 full bathrooms. Extensive trim work and molding add character throughout, while multiple closets provide excellent storage options. The 3-car garage offers flexibility for vehicles, recreational equipment, storage, etc. The glass front door and large arched window set the tone for the light-filled interior, which features high ceilings and abundant windows throughout. Straight ahead, the formal living room provides a relaxing space to enjoy views of nature, while the adjacent formal dining room offers generous space for hosting dinners and holiday gatherings. The chef's kitchen includes a center island, 5-burner gas cooktop, wall oven, farmhouse sink, wine fridge, pantry, and breakfast area. A den with a gas log fireplace is located just off the kitchen. The first-floor primary suite features two walk-in closets, double vanities, a Jacuzzi tub, and Travertine stone floors and shower. The adjacent guest bathroom also provides direct access from the veranda for convenience when entertaining in the back yard. A built-in speaker system extends through multiple rooms and the expansive rear veranda overlooking the golf course and tiered fountain. The landscaped yard includes irrigation, while the veranda offers space for outdoor relaxation and enjoying gorgeous sunset views. Located in Beau Rivage, this home is minutes from shopping and dining along Carolina Beach Road and less than 7 miles from Carolina Beach.







36 Hive Mills





26 Hive MLS





26 Hive MLS









26 Hive MLS





26 Hive MLS





16 Hive MLS





26 Hive MLS







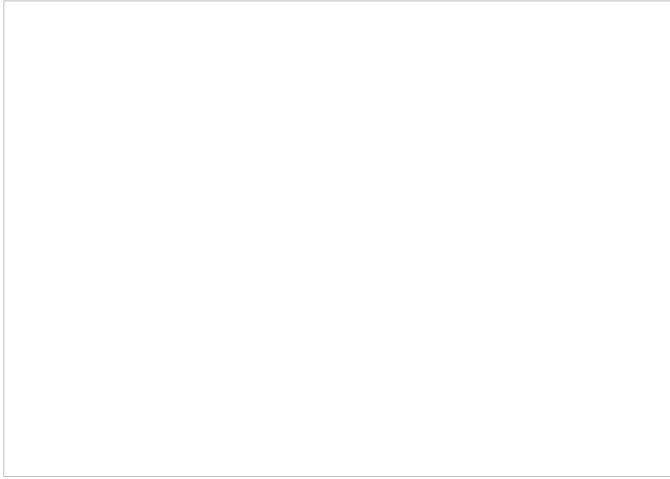


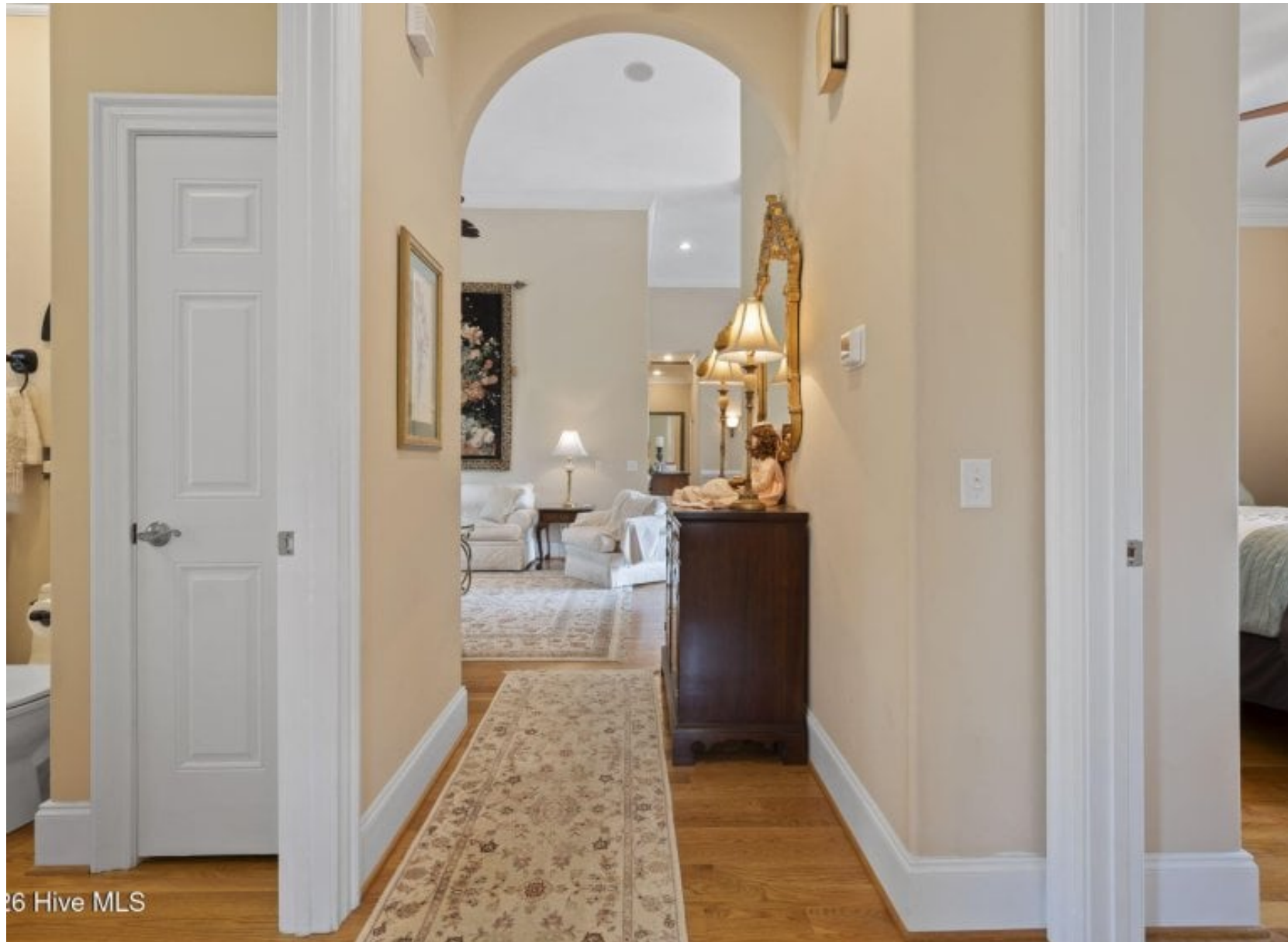
36 Hive MLS





36 Hive MLS





26 Hive MLS





86 Hive MLS





26 Hive MLS

















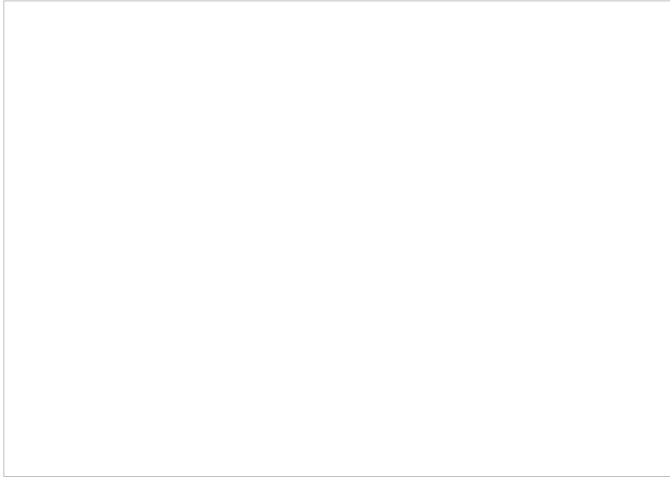
26 Hive MLS







86 Hive MLS





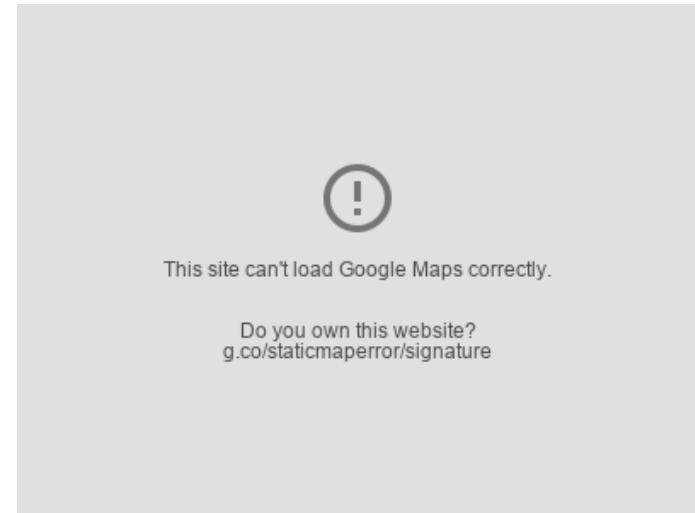
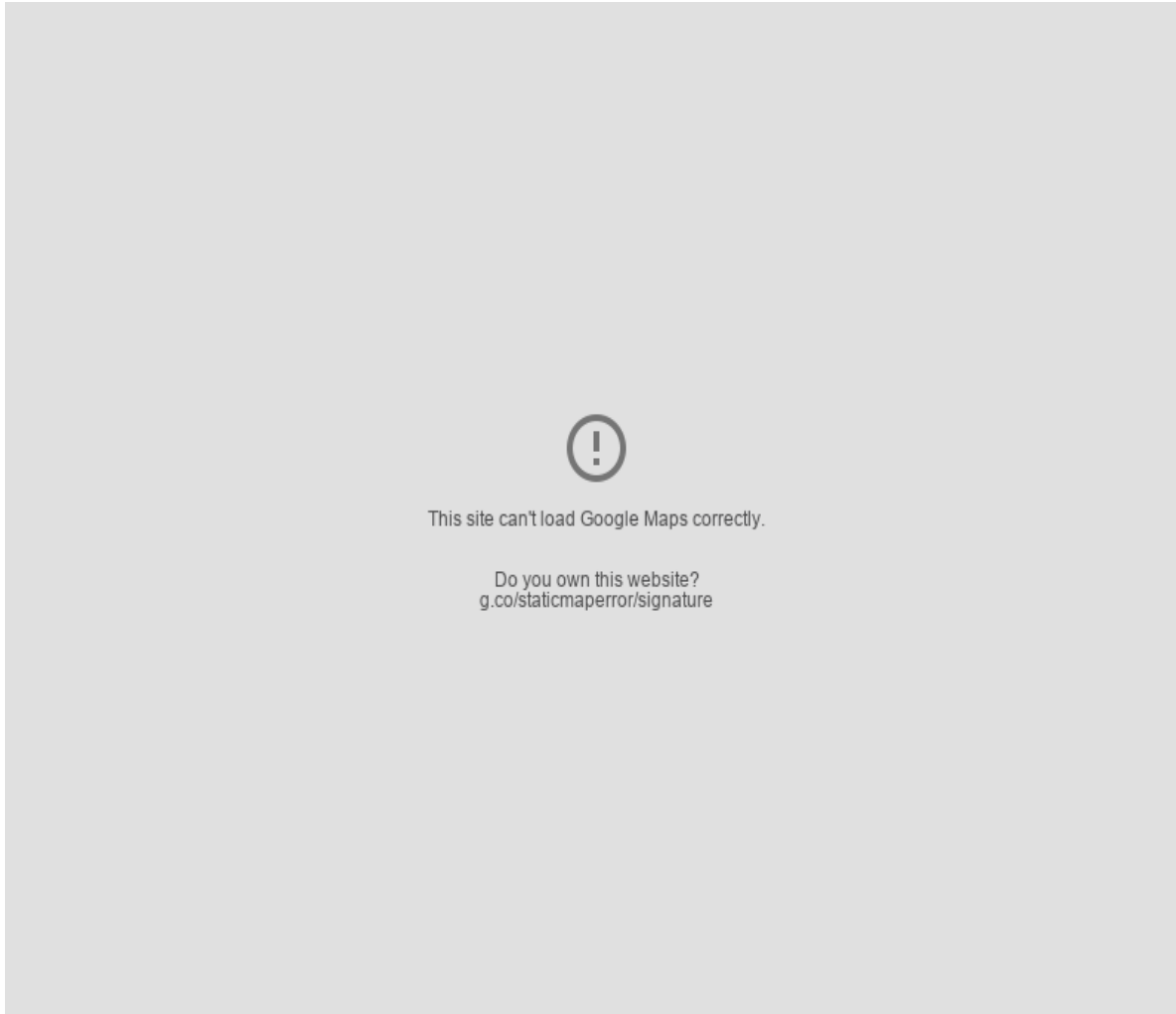
26-Hive MLS





26 Hive MLS

Location



Hamptons

INTERNATIONAL

+44 (0)20 8618 4551

international@hamptons.co.uk

www.hamptons-international.com