

# Hamptons

INTERNATIONAL

---

**6 North Terrace, Maplewood, NJ 07040**

**4  3 **

**£670,000**

**(\$899,000)**

## Property details

---



### Key features

- **Fireplace Count: 1 Fireplace**
- **Garage Count: 2 Car Garage**
- **Heating - Fuel Type: Gas**
- **Sewer: Public**
- **Water: City Water**

### Attributes

-  **Garage**
-  **Refurbished**

**6 North Terrace, Maplewood, NJ 07040**

4  3 

**£670,000**  
**(\$899,000)**

## Description

Welcome home to this move in condition center hall colonial. From the moment you enter the center hall foyer you will feel the specialness of this charming home. The first floor living room has a fireplace as its centerpiece, large built in bookcases flank the window that looks out to the new patio and backyard. New recessed lighting adds to the warm ambiance. Custom doors lead into the den with a convenient door to the backyard. There is a wall of windows for natural light. A new powder room off the den as well. A large light filled dining room is perfect for large gatherings. Newer kitchen has a pantry and a door leading out to the patio. The second floor offers a spacious primary bedroom and 2 additional bedrooms. There is a new full bathroom with a bathtub. A walk up third floor has the fourth bedroom, a full bath with a shower and a bonus space. There is an additional split air conditioning unit for the extra hot days. The lower level has a fully soundproofed and insulated music studio. It can be used as an office, playroom or just an additional room. There is a storage room and laundry room as well. The exterior has new Hardy Plank siding, newer windows, patio, professionally landscaped backyard, two car garage, central air and freshly painted interior. Less than .7 miles to the train. Close to all Maplewood has to offer and Maplewood village. You can be in your new home for the fourth of July celebrations! Bedroom 11.0ft x 20.0ft Bedroom 11.0ft x 12.0ft Bedroom 9.0ft x 12.0ft Bedroom 14.0ft x 12.0ft Den 8.0ft x 12.0ft Dining Room 12.0ft x 13.0ft Kitchen 9.0ft x 15.0ft Living Room 11.0ft x 20.0ft































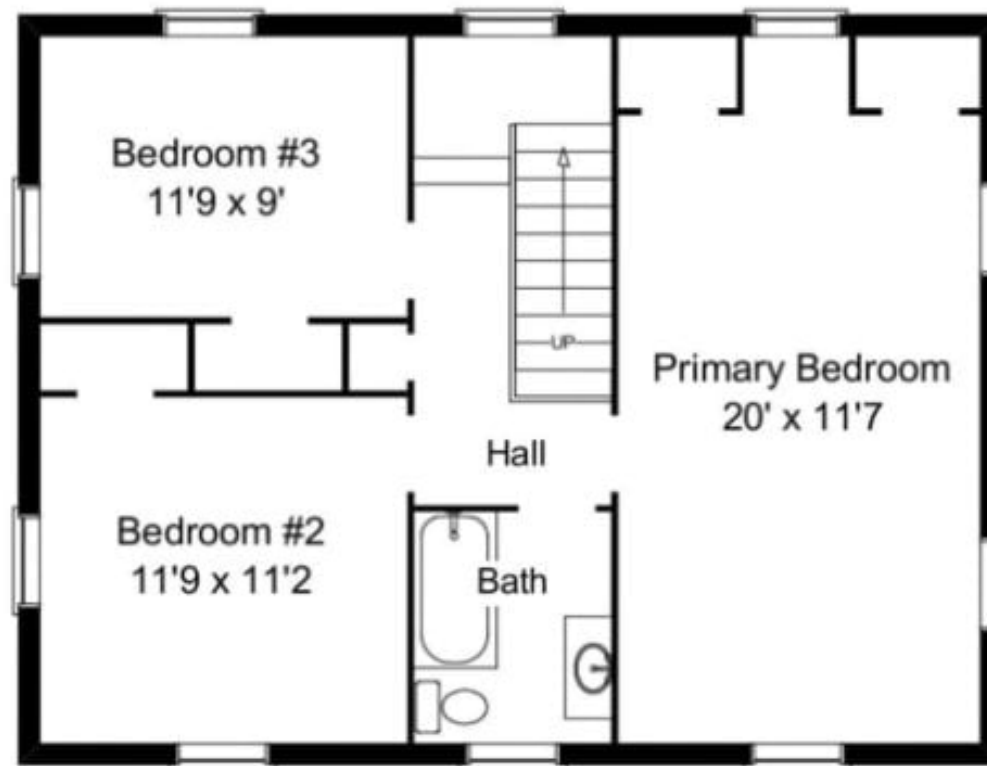








## Floor Plan: 6 North Terrace, Maplewood



second floor

# Location

---



# Hamptons

INTERNATIONAL

**+44 (0)20 8618 4551**

**[international@hamptons.co.uk](mailto:international@hamptons.co.uk)**

**[www.hamptons-international.com](http://www.hamptons-international.com)**