

Hamptons

INTERNATIONAL



Roland Gardens, London, SW7

3  3  2 

£3,000,000

(£2,999,500)

Property details



Key features

- **3 Bedrooms**
- **Bathroom : Shower Room**
- **En Suite Shower Room**
- **Reception Room**
- **Kitchen**
- **Air Conditioning**
- **Laundry Room**
- **Terrace**
- **Garden**

Attributes

- **Apartment**

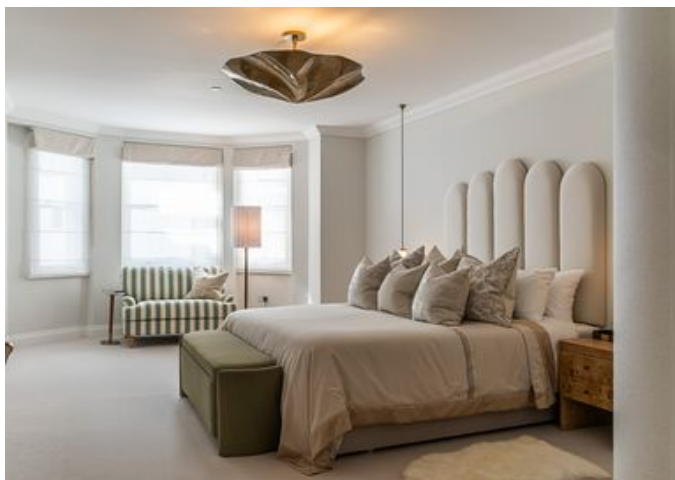
Roland Gardens, London, SW7

£3,000,000
(£2,999,500)

3 🏠 3 🚗 2 📧

Description

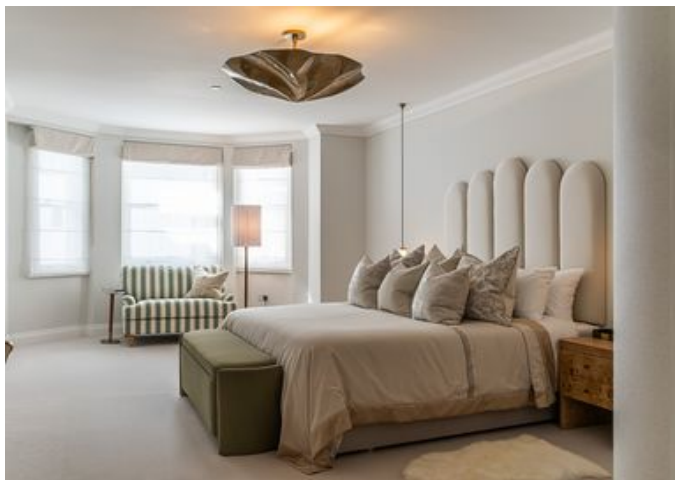
Apartment A at 26 Roland Gardens covers the raised and lower ground floors of a handsome Victorian conversion where the two upper apartments have also been redeveloped by West 11, all to a high standard. This is a spacious and well-appointed three-bedroom duplex which seamlessly combines elegant proportions and original features with practical modern living. A part of a fully redeveloped Victorian block consisting of three, three bedroom duplex apartments, Apartment A at 26 Roland Gardens is a spacious and well-appointed three-bedroom (all with AC) duplex set across the ground and lower ground floors of a handsome period building. With an approximate gross internal area of 1,792 sq. ft., the property seamlessly combines elegant proportions with practical modern living. On the ground floor, a welcoming entrance hall leads into a large and bright living room featuring a bay window and ample space for both relaxation and entertaining. To the rear, the Eggersmann kitchen with Miele appliances opens onto a charming terrace, perfect for morning coffee or alfresco dining. A separate laundry room adds convenience. The lower ground floor offers three generously sized bedrooms. The principal bedroom benefits from an adjoining dressing room and direct access to a private garden. Two further bedrooms provide flexible accommodation for family, guests, or home office use. Additional features include a second dressing area and ample storage throughout. This apartment is an ideal home for those seeking space, style, and outdoor living in one of London's most prestigious neighbourhoods. Situation Roland Gardens is a highly desirable residential street in South Kensington, renowned for its elegant period architecture and central yet peaceful setting. The property is within walking distance of the boutiques, cafés, and restaurants of Fulham Road and Old Brompton Road, while world-class cultural landmarks such as the Natural History Museum, V&A Museum, and Royal Albert Hall are close by. Transport connections are excellent, with South Kensington Underground Station (Circle, District, and Piccadilly lines) providing direct access across London, including to Heathrow Airport, the West End, and the City. The area also benefits from top-rated schools and nearby garden squares, making it a prime location for families and professionals alike. Property Ref Number: HAM-56710







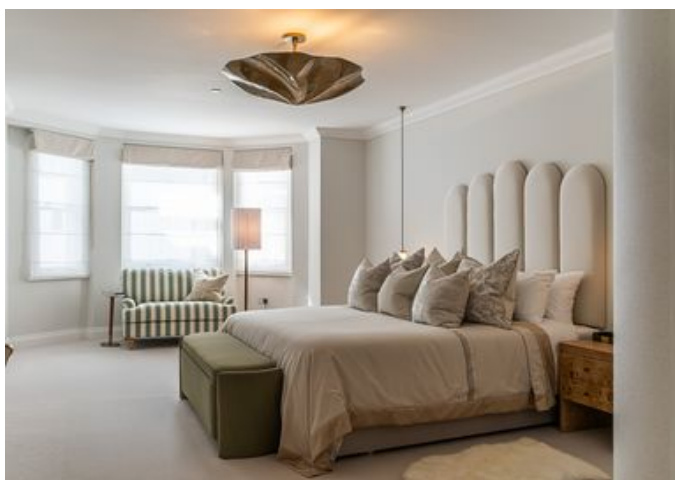








































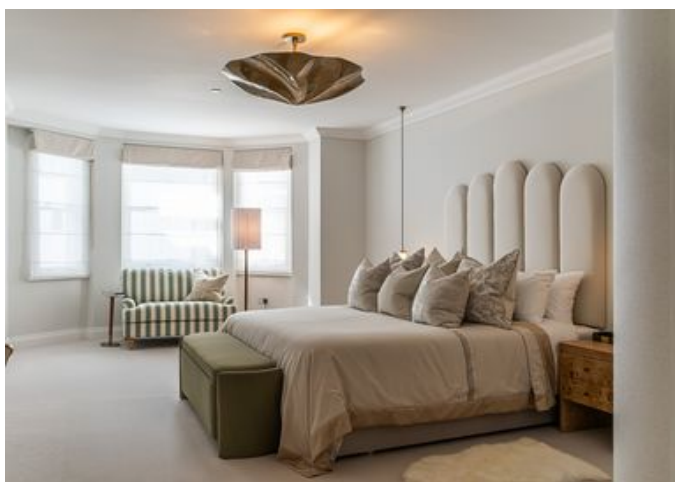








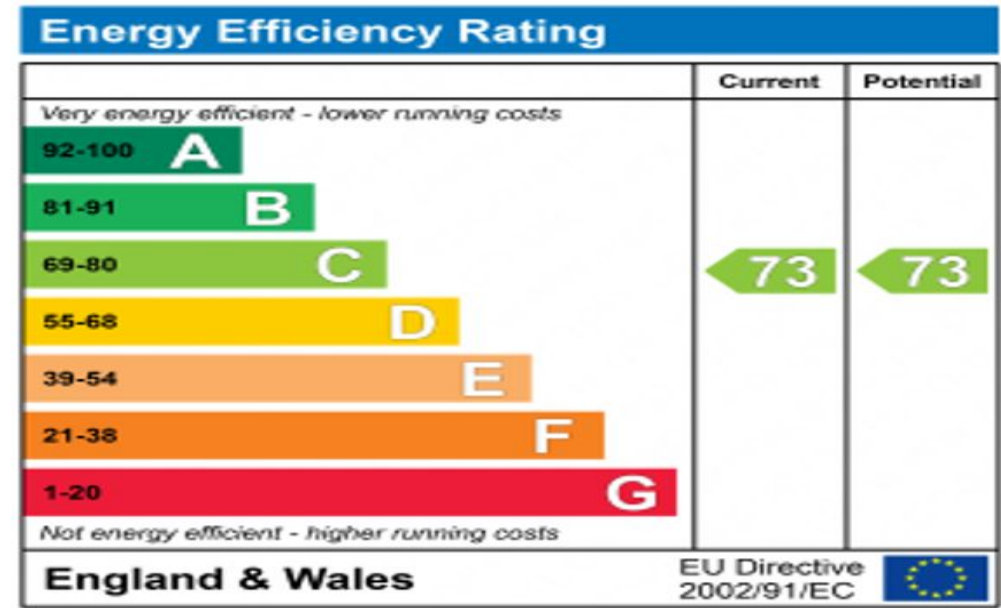












Floor plan

ROLAND GARDENS

Approximate Gross Internal Area = 1792 sq. ft. (166.5 sq. m.)



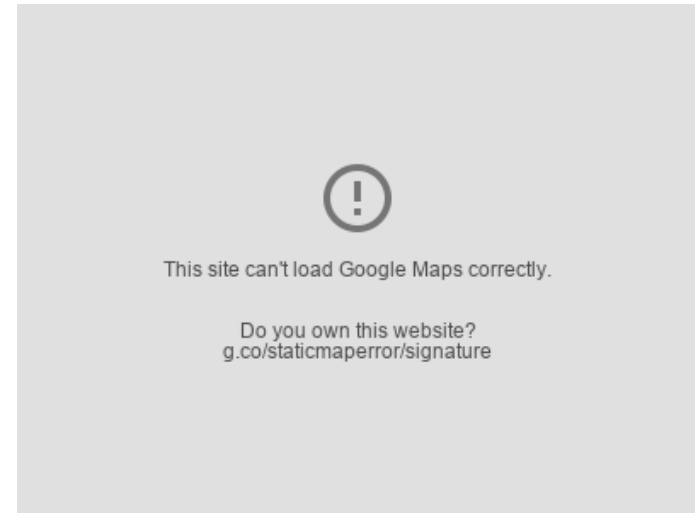
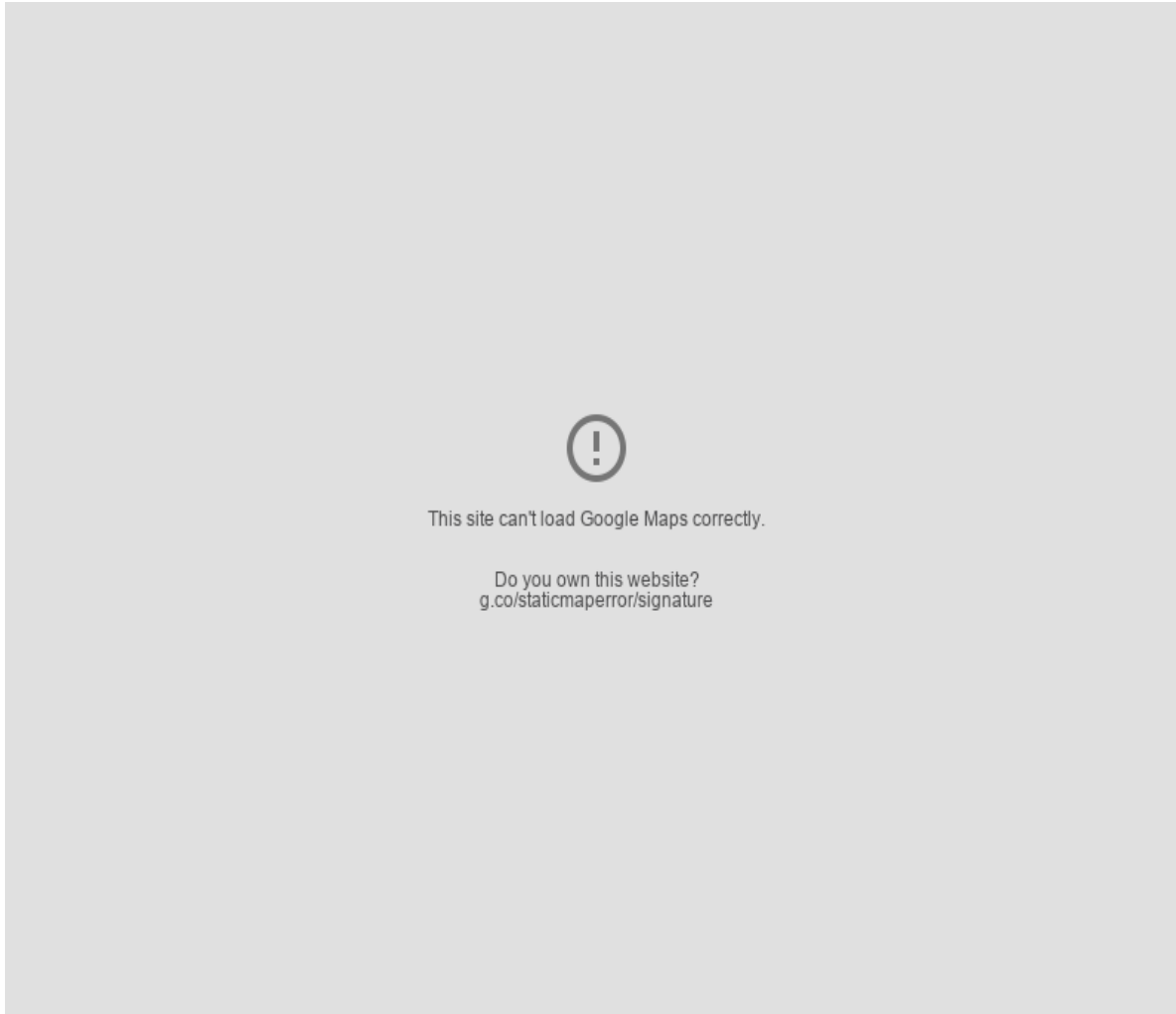
Ground Floor



Basement

Drawn for illustration and identification purposes only.

Location



Hamptons

INTERNATIONAL

+44 (0)20 8618 4551

international@hamptons.co.uk

www.hamptons-international.com