

# Hamptons

INTERNATIONAL



**648 62nd Ct, Downers Grove, IL 60516**

5 🏠 4 🚗

**£580,000**

**(\$775,000)**

## Property details



### Key features

- **Garage Count: 2 Car Garage**
- **Sewer: Public**
- **Fireplace Count: 1 Fireplace**
- **Cooling: Central A/C**
- **Special Program: Global Luxury**

### Attributes

 **Garage**

**648 62nd Ct, Downers Grove, IL 60516**

**£580,000**  
**(\$775,000)**

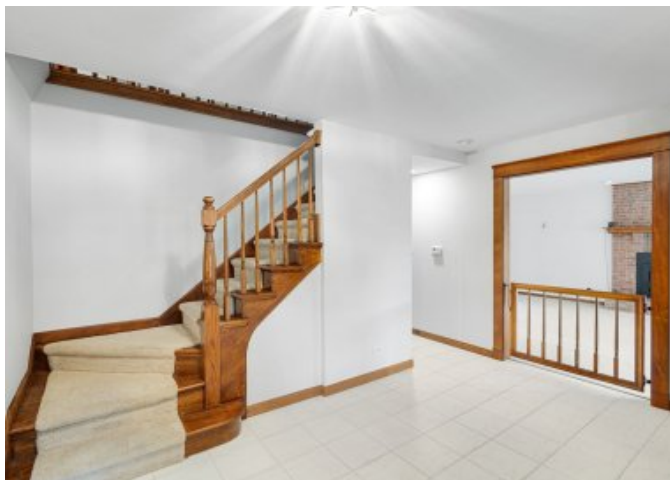
5  4 

## Description

Welcome to this spacious and well-maintained home offering over 3,300 sq ft of living space plus a beautifully finished basement (1204 Sq.ft) Ideally situated on a quiet cul-de-sac. Enjoy a prime location within walking distance to Fairmount Elementary and O'Neill Middle School, and just one mile from Downers Grove South High School, with the YMCA nearby for added convenience. This home is packed with major updates, including energy-efficient systems with two new Lennox furnaces and a new central air conditioner (2023), a new roof (2023), and a Generac whole-house standby generator for peace of mind. Step inside to a welcoming foyer that opens to a cozy den and a bright living room featuring a clean-burning, EPA-rated wood fireplace with a brand-new NextGen hybrid insert. The kitchen is both functional and inviting, offering stainless steel appliances, white ceramic tile, oak cabinetry, an island, and a built-in desk area. A patio door leads to a low-maintenance deck-perfect for outdoor entertaining. Upstairs, you'll find new carpeting throughout and a unique primary suite layout featuring a private bath with double sinks, an in-suite laundry area, a library/reading space, and a spacious walk-in closet. Additional bedrooms are generously sized, including one en suite with a quiet study suite-ideal for school or work from home. The newly finished basement expands your living space with a large carpeted recreation area, bar with sink, workout room, and a cement crawlspace for excellent storage. Outside, enjoy a huge fenced yard complete with a natural gas grill, two storage sheds, one that is extra tall and is one car wide with rollup door and loft for storage, and plenty of room to relax or play. The garage is equipped with a side service entrance, a new steel overhead door, and a 40-amp 240V circuit ready for an EV charging station. Don't miss the storage shed in backyard that is two stories high with 220 SF of space with roll up door to get those tall items inside. This home truly offers space, updates, and location-all in one incredible package.







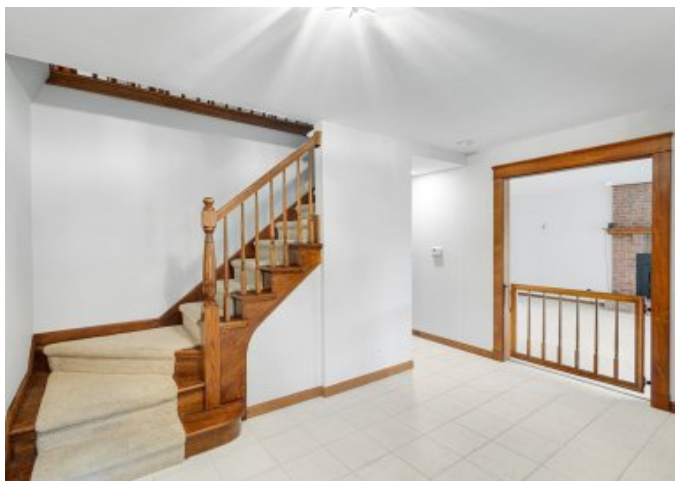






























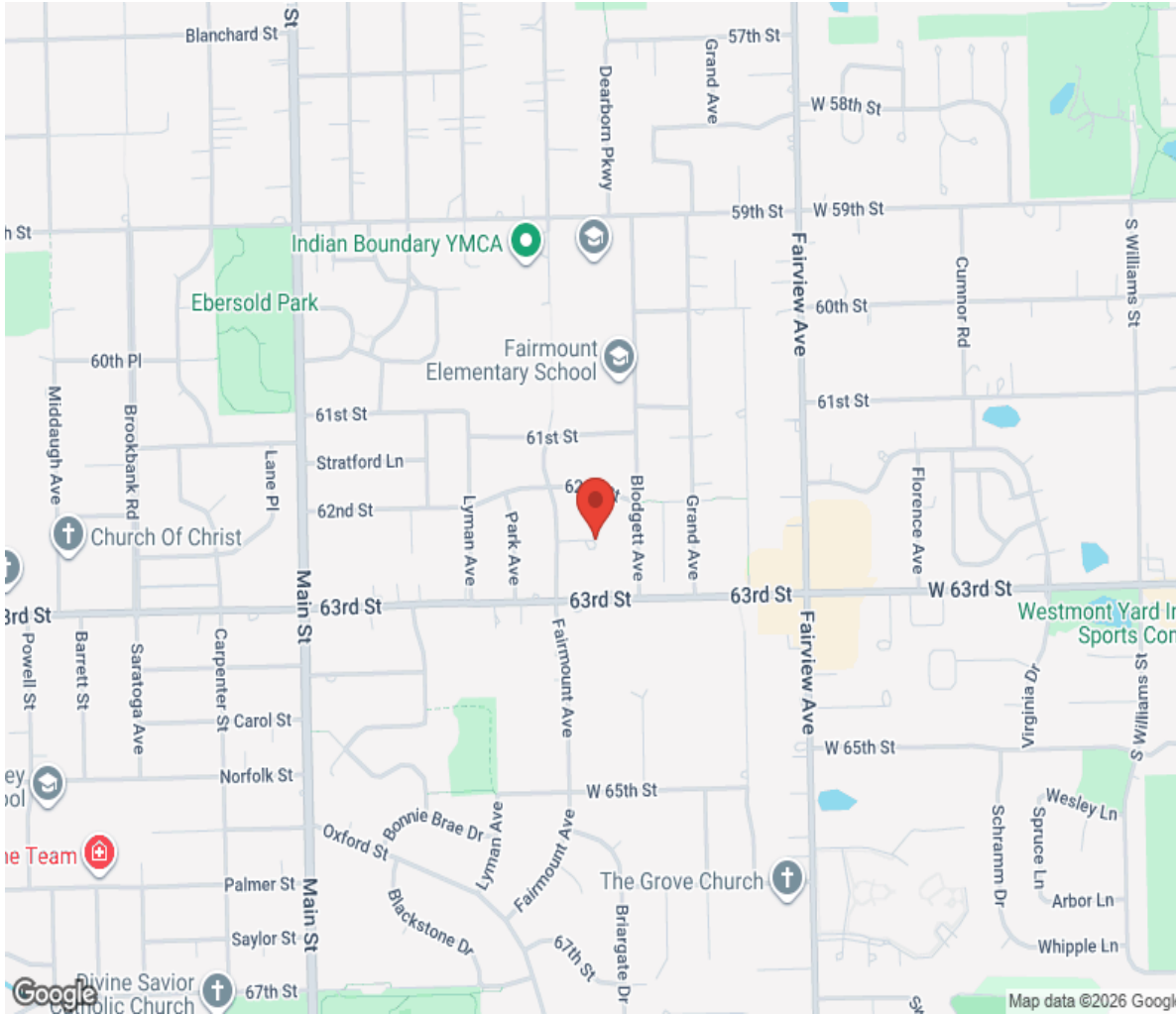
**TOTAL: 3592 sq. ft**

Basement: 44 sq. ft, 1st floor: 1808 sq. ft, 2nd floor: 1740 sq. ft

EXCLUDED AREAS: 1780 sq. ft



# Location



# Hamptons

INTERNATIONAL

**+44 (0)20 8618 4551**

**[international@hamptons.co.uk](mailto:international@hamptons.co.uk)**

**[www.hamptons-international.com](http://www.hamptons-international.com)**