

Hamptons

INTERNATIONAL



905 S Park Pl, Rogers, AR 72758

5 🏠 3 🚗

£400,000

(\$527,500)

Property details



Key features

- **Age: Over 50 Years Old**
- **Sewer: Public**
- **Fireplace Count: 1 Fireplace**

905 S Park Pl, Rogers, AR 72758

5 🏠 3 🚗

£400,000
(\$527,500)

Description

Updated home on a quiet cul-de-sac in Parkwood Add. Rogers Subdivision! Open and spacious living space with sunroom! New roof and flooring, refreshed bathrooms, abundant natural light. Detached 10x20 workshop plus two 8x16 storage sheds. Seller finishing a few cosmetic updates. Located just minutes from schools, hospitals, and Pinnacle Hills Promenade, plus walking distance to Rogers Aquatic Center! Quick, easy access to I-49. Enjoy a covered front porch, spacious backyard and everyday essentials!







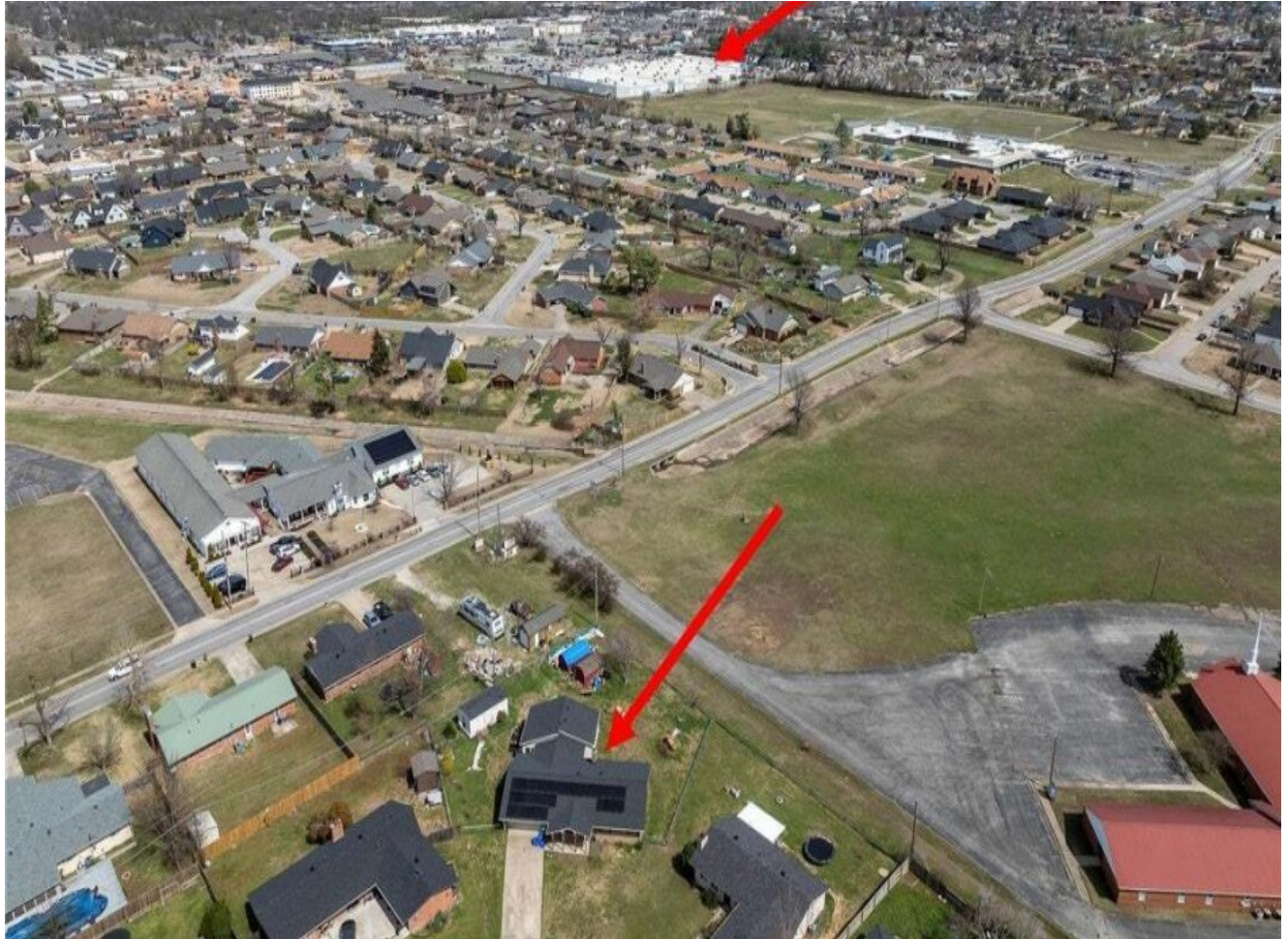














Location



Hamptons

INTERNATIONAL

+44 (0)20 8618 4551

international@hamptons.co.uk

www.hamptons-international.com