

Hamptons

INTERNATIONAL



38 W Minnehaha Pkwy, Minneapolis, MN 55419

4 🏠 3 🛏

£820,000
(\$1,095,000)

Property details



Key features

- **Garage Count: 2 Car Garage**
- **Heating - Fuel Type: Gas**
- **Sewer: Public**
- **Fireplace Count: 2 Fireplaces**
- **Cooling: Central A/C**
- **Water: City Water**
- **Special Program: Global Luxury**

Attributes

 **Garage**

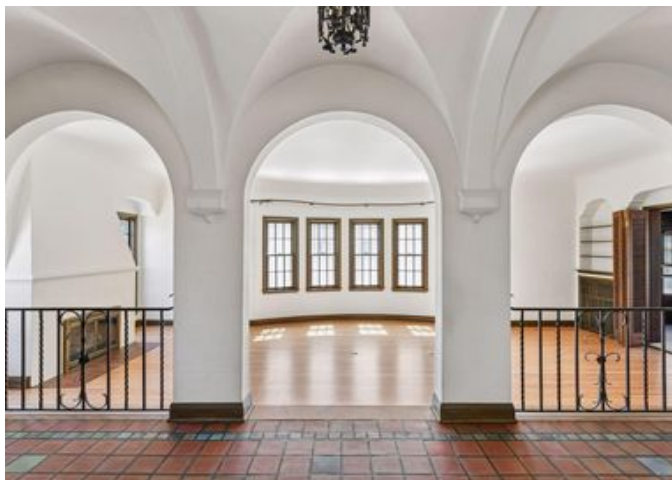
38 W Minnehaha Pkwy, Minneapolis, MN 55419

£820,000
(\$1,095,000)

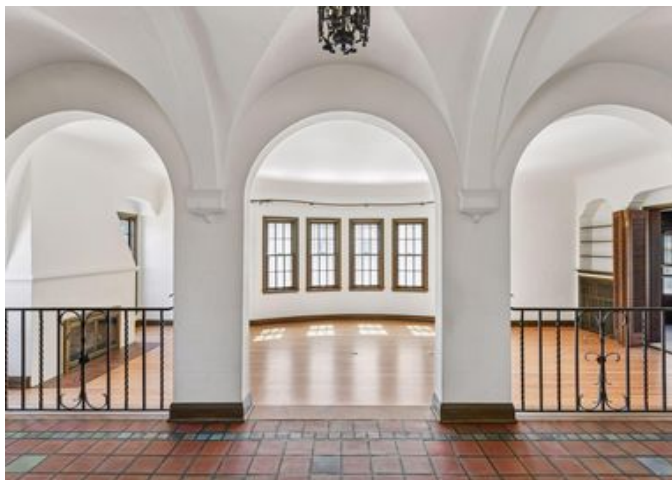
4  3 

Description

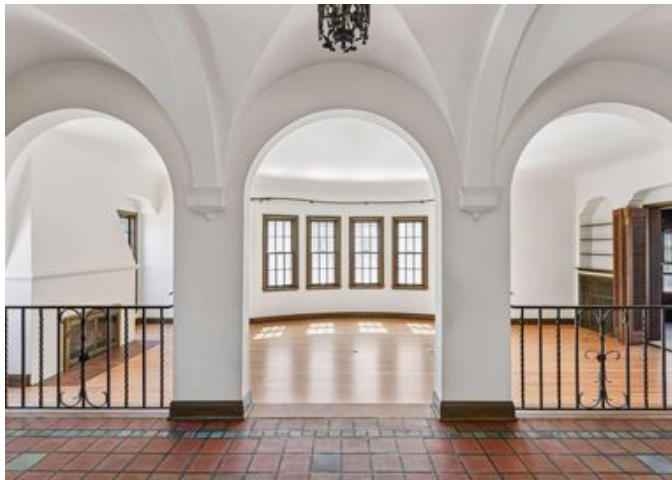
Set along the picturesque curves of Minnehaha Parkway, with sweeping, tree-lined views of Minnehaha Creek, this exceptional Mediterranean-style residence is a rare architectural offering designed and built by Ella Pendergast. Distinctive and timeless, the home blends original craftsmanship with thoughtful updates while embracing its extraordinary natural setting. From the moment you enter, graceful, vaulted arches, vintage red quarry tile, wrought-iron accents, and newly refinished hardwood floors create warmth, artistry, and enduring style, framed by light and views that connect the interior to the landscape beyond. You are immediately drawn in by a striking Palladian arch foyer. To the left, the main living room is both sophisticated and welcoming, designed to capture light and scenery. A beautiful fireplace anchors the space, flanked by windows and enhanced by a dramatic five-window bay overlooking the creek and parkway. Coved ceilings, custom built-ins, and intricate wrought-iron detailing, hallmarks of Pendergast's refined approach, complete the room. Just beyond, a richly paneled den offers a more intimate retreat, with new carpet and rounded French doors opening to the backyard, ideal for quiet evenings, reading, or a beautifully appointed home office. At the rear of the entry, a versatile open room with backyard views, matching built-ins, and refinished hardwood floors adapts effortlessly as a den, media room, or future kitchen expansion. The formal dining room is a true showpiece, reimagined for today while honoring its architectural roots. Anchored by a stunning rose frieze crown molding, the space reflects both artistry and craftsmanship. French doors open to a front terrace overlooking the creek, creating an extraordinary setting for entertaining, al fresco dining, or simply enjoying serene, tree-lined views. Hardwood floors, classic paned doors, and vintage lighting complete the space. The kitchen offers an ideal working layout with abundant cabinetry, expansive counter space, and a pantry with extra-deep storage. An adjoining sun-filled informal dining area provides a warm, functional gathering space with direct backyard access for seamless indoor-outdoor living. A conveniently located powder room completes the main level. Upstairs, four generously sized bedrooms offer comfort and character, each with hardwood floors, distinctive architectural details, and windows on two sides that fill the spaces with natural light. The hallway continues the home's cohesive design with built-in cabinetry, arched openings, and original wrought-iron railings. The owner's suite, overlooking the creek, is bright and spacious with four windows, elegant picture-frame molding, and an ensuite bath featuring beautifully preserved original tile. A fully remodeled hall bath adds modern luxury with a soaking tub, new vanity, and tiled walk-in shower. The large front bedroom features charming French windows with sculpted detailing, while another bedroom offers access to a private upper-level deck overlooking the backyard. The lower level extends the home's livability with a cozy family room featuring custom built-ins, a gas fireplace, and a beautifully designed bar with extensive wine storage, perfect for collectors and entertaining. This inviting space is ideal for family gatherings or hosting friends. A mudroom provides direct access to the garage, while a large laundry room and additional storage complete the level. Throughout, original details, vintage light fixtures, sculpted millwork, and intricate wrought-iron accents have been carefully preserved and enhanced, reflecting the vision of one of the region's early female architectural voices. This is a rare opportunity to own not just a home, but a piece of architectural history, where design legacy, modern livability, and an exceptional setting along one of Minneapolis' most beloved parkways come together.



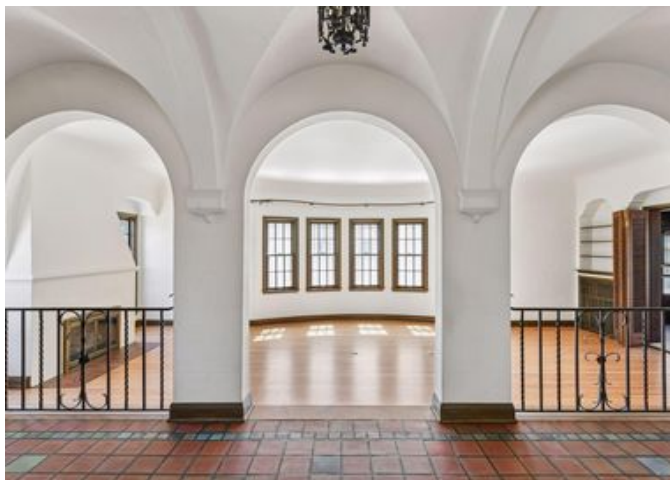




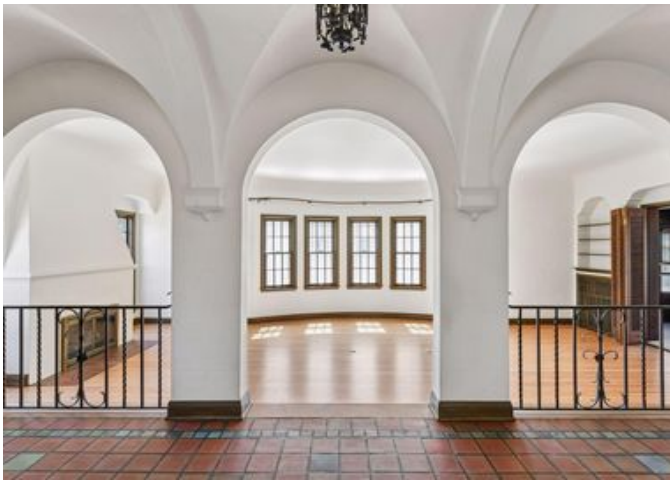




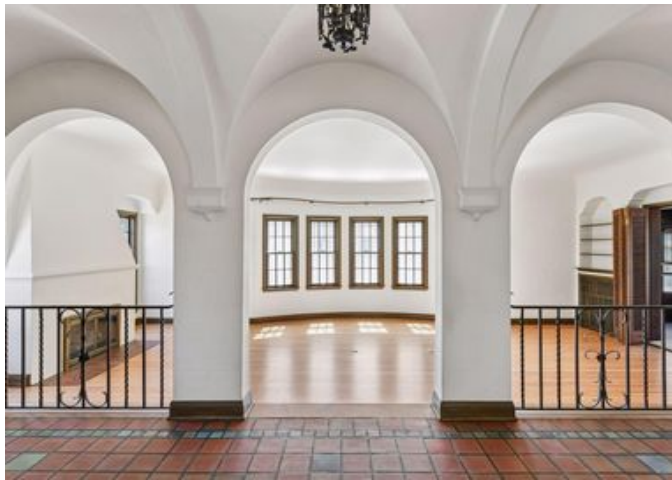




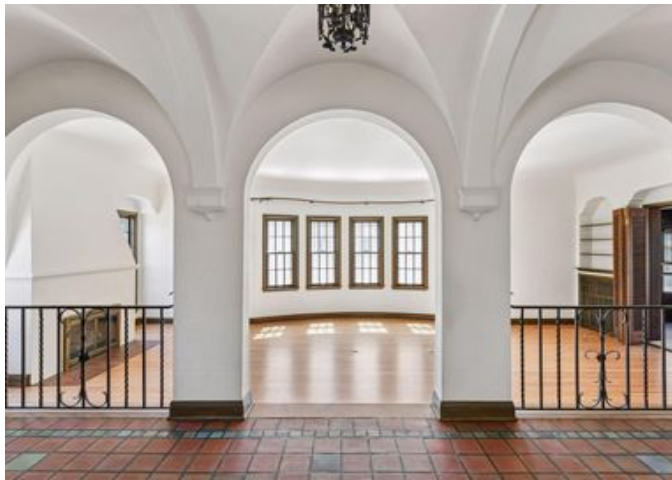




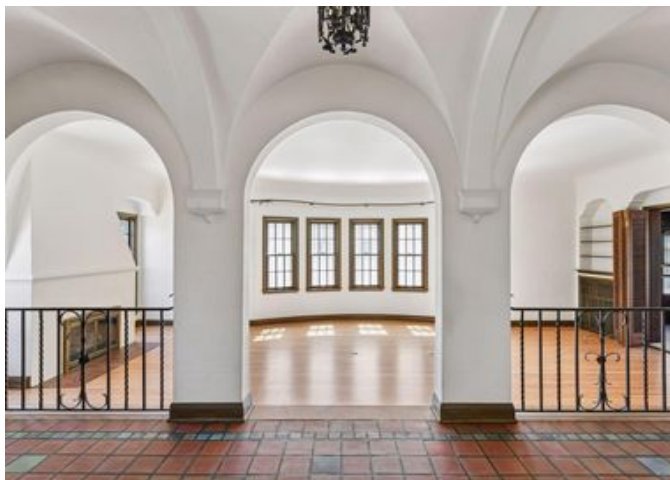




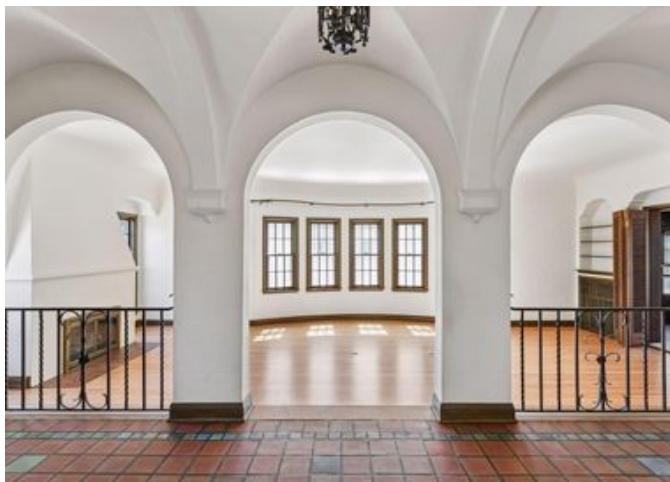




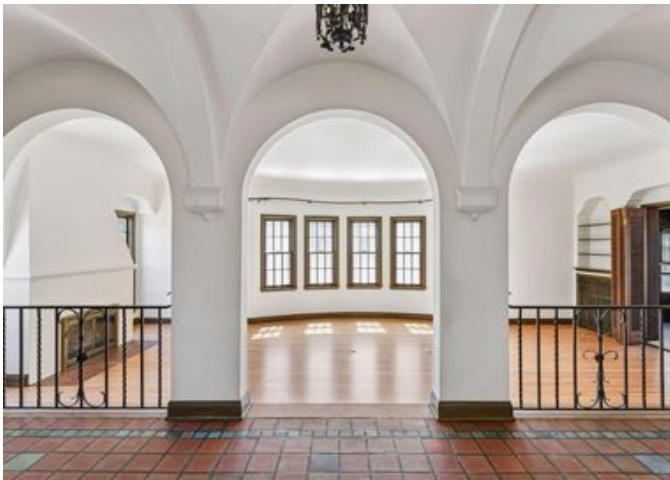




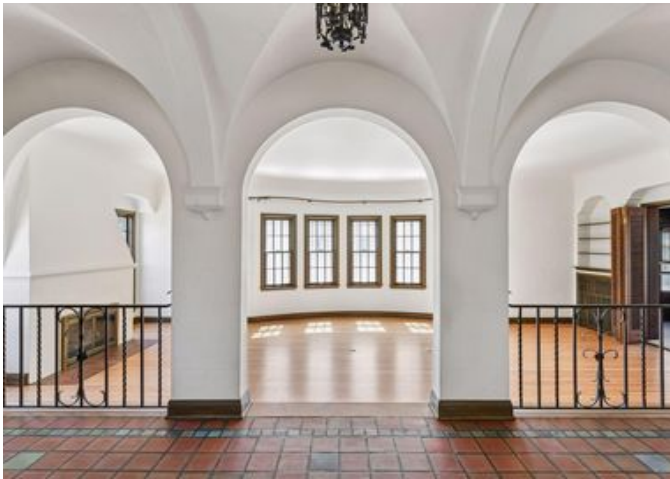




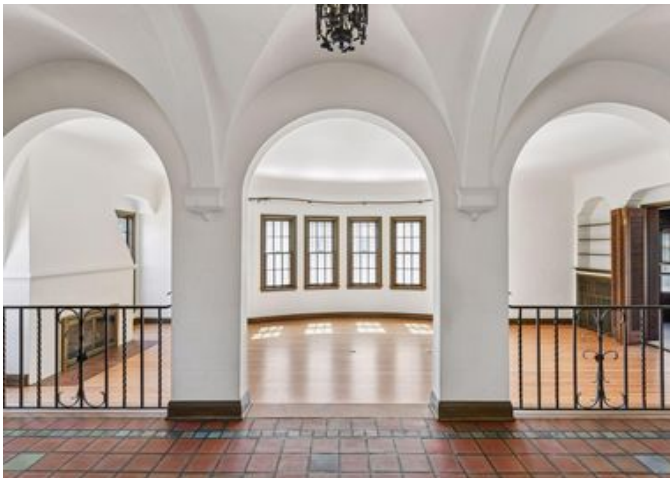




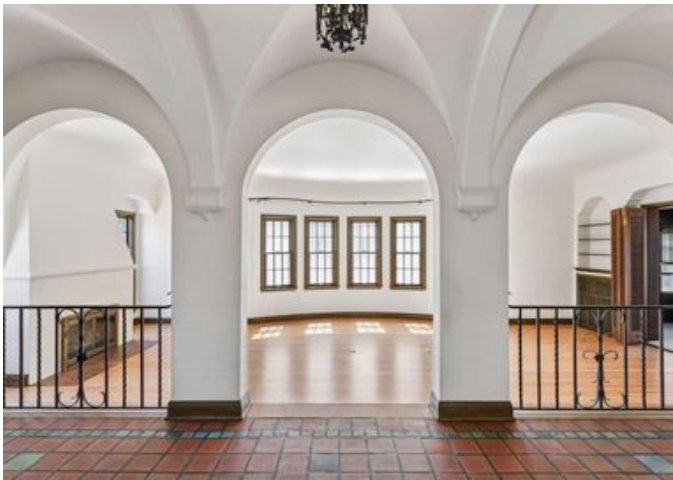






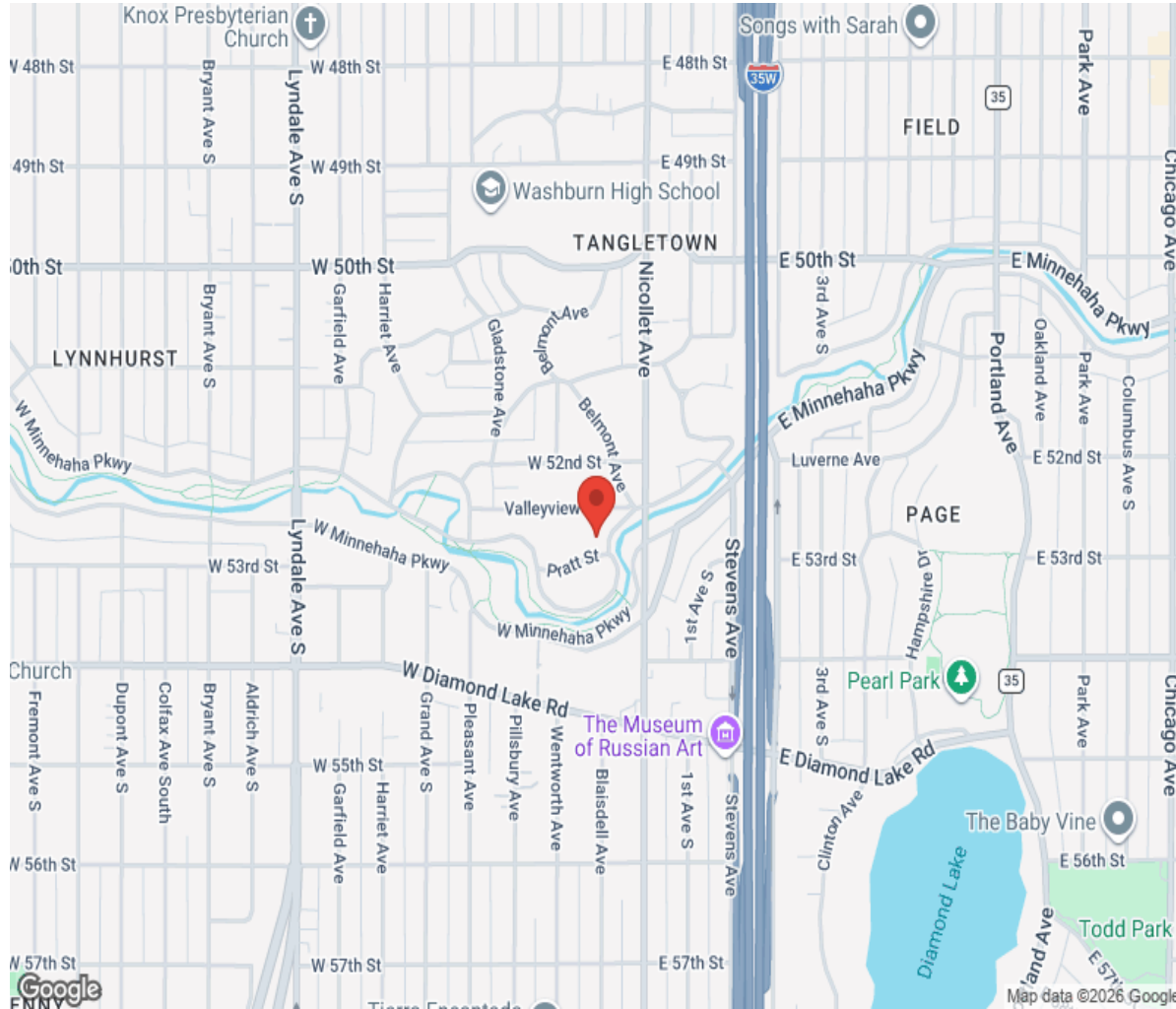








Location



Hamptons

INTERNATIONAL

+44 (0)20 8618 4551

international@hamptons.co.uk

www.hamptons-international.com