

# Hamptons

INTERNATIONAL



**1464 Minnehaha Ave W, Saint Paul, MN 55104**

10 🏠 4 🚗

**£750,000**

**(\$999,999)**

## Property details



### Key features

- Heating - Fuel Type: Gas
- Sewer: Public
- Garage Count: 5 + Car Garage
- Fireplace Count: 1 Fireplace
- Cooling: Window A/C
- Special Program: Global Luxury
- Water: City Water

### Attributes

-  Garage
-  Private parking
-  Garden

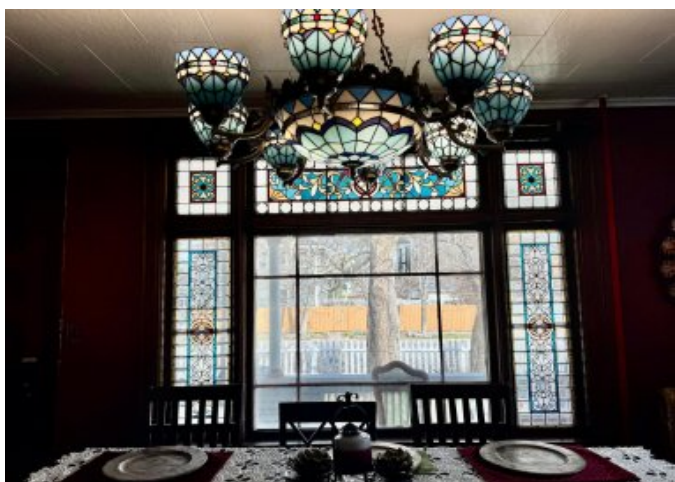
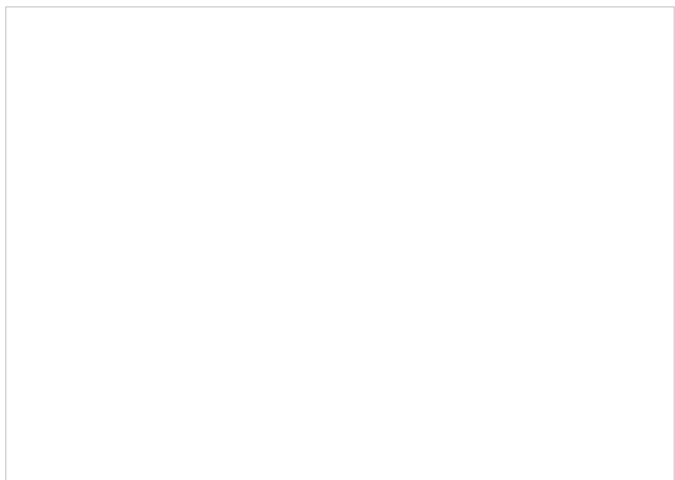
**1464 Minnehaha Ave W, Saint Paul, MN 55104**

**£750,000**  
**(\$999,999)**

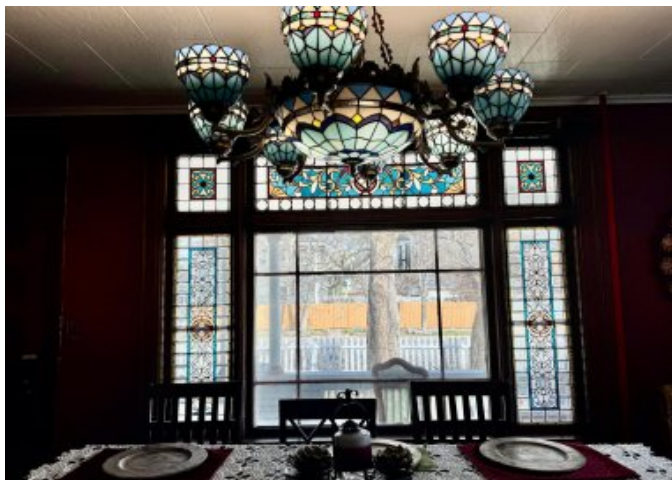
10 🏠 4 🚗

## Description

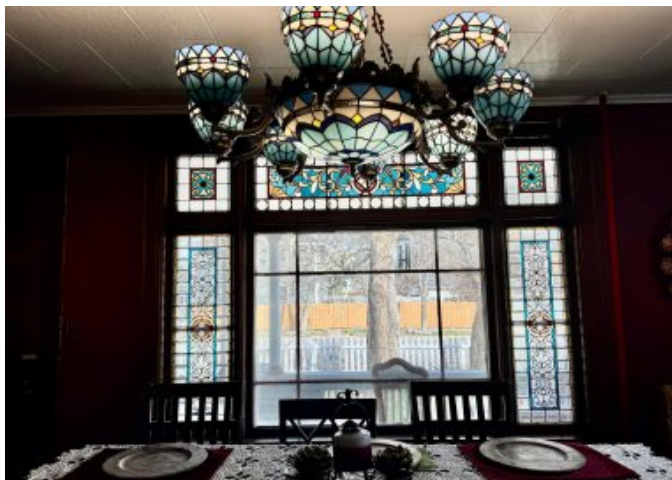
This is a rare opportunity to own a piece of Saint Paul history. The Frederick Grant Mansion, a late 19th-century masterpiece, perfectly marries the grandeur of the 1800s with the high-end amenities expected of a modern estate. Situated on a sprawling double lot, this property is a private sanctuary defined by architectural integrity and whimsical outdoor living. **The Main Residence:** Timeless Craftsmanship Step through the entryway and back in time, where the golden glow of tiger oak woodwork and stained glass windows illuminate every room. **Historic Details:** Original large pocket doors provide an elegant flow between living spaces, while maple inlaid flooring runs underfoot. **Chef's Kitchen:** A modern culinary dream featuring granite countertops, a professional gas stove, and a substantial kitchen island for gathering. **Luxury Retreats:** Multiple fireplaces offer warmth and ambiance, while the bathrooms feature deep Jacuzzi tubs for ultimate relaxation. **The Carriage House & Grounds** A true rarity in the city, the property includes a massive 7-car garage with three bay doors-ideal for the serious collector. **The Breezeway:** A seamless, covered connection between the main house and the garage/carriage house. **Carriage House:** Located above the garage, this versatile space is perfect for a guest suite, studio, or private home office. **Parking:** Beyond the garage, the four-stall driveway features the original 1900s street pavers, maintaining the home's historic curb appeal. **Outdoor Living & Gardens** The exterior is as enchanting as the interior. A classic white picket fence encloses a vibrant landscape of tulips, apple trees, mulberry bushes, and rhubarb. **Relaxation:** Enjoy your morning coffee on the expansive wrap-around porch. **Play:** The rear deck features a custom slide, adding a touch of modern fun to this stately double lot.





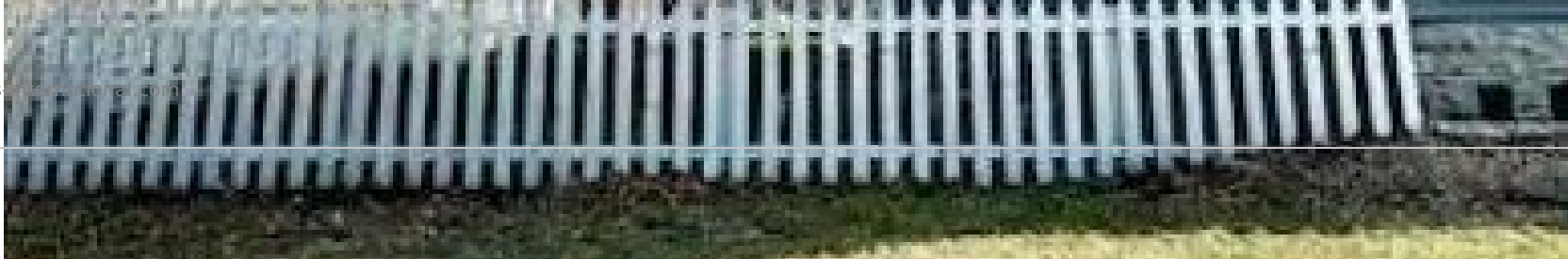




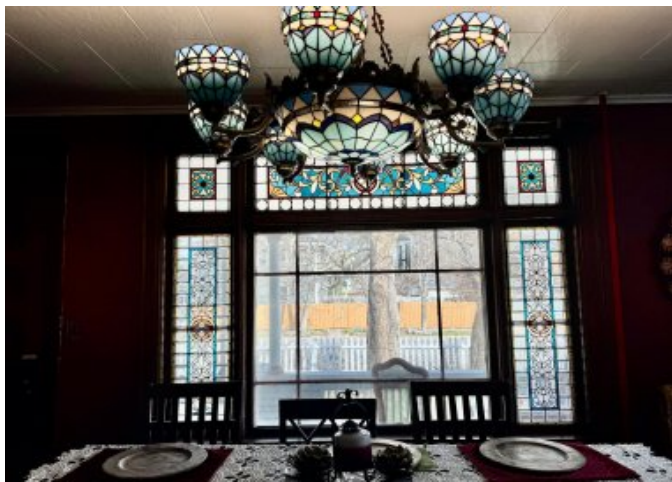


PROPERTY

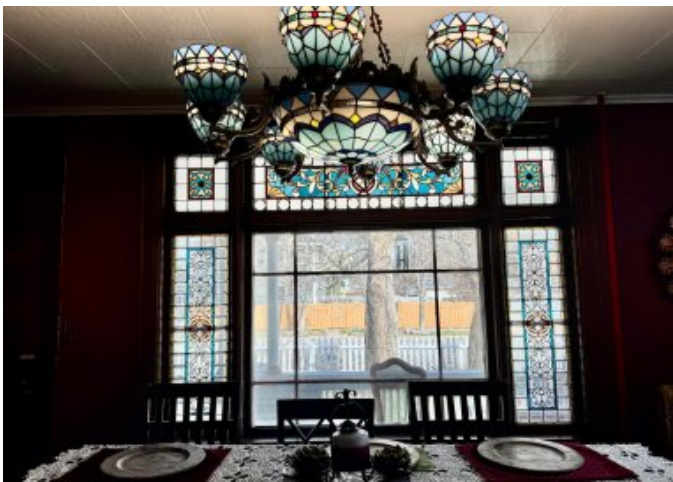




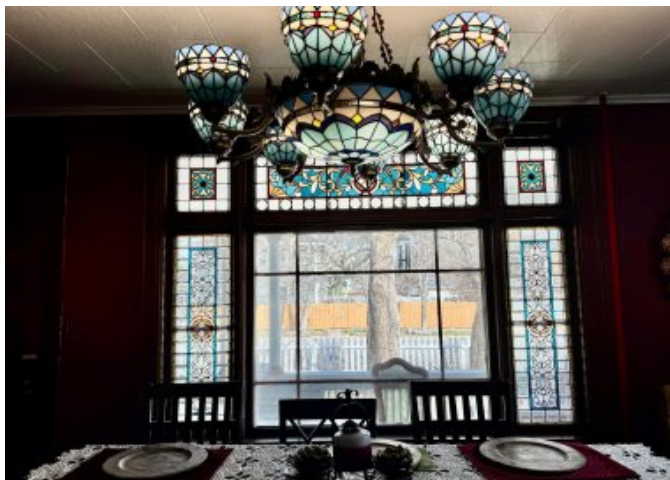




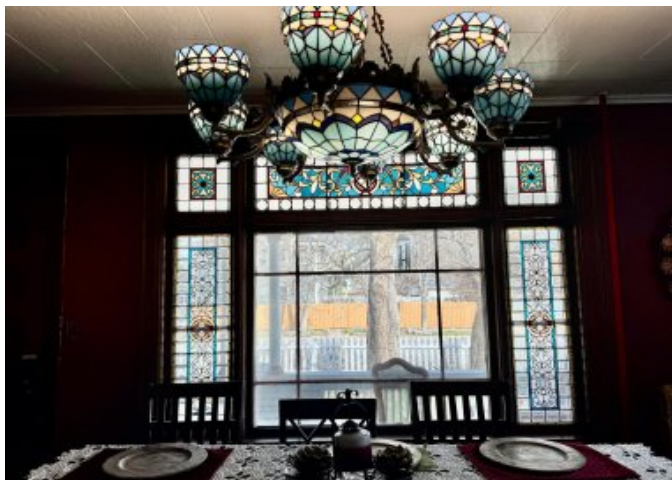




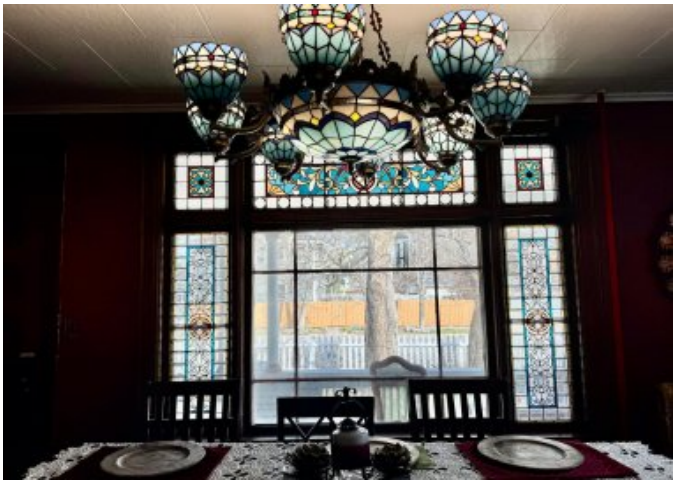




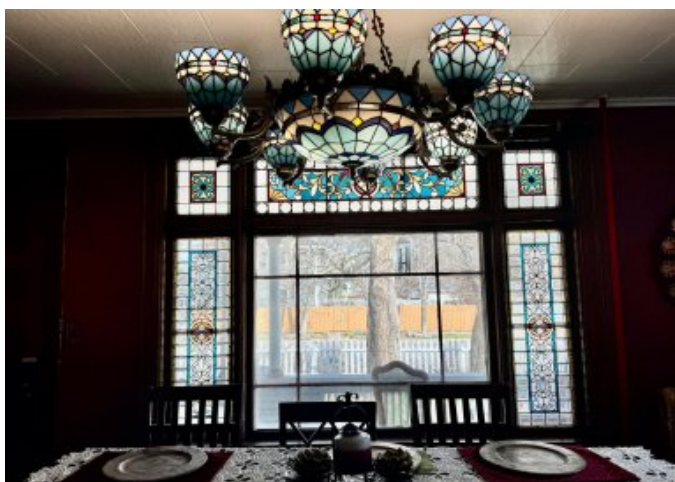
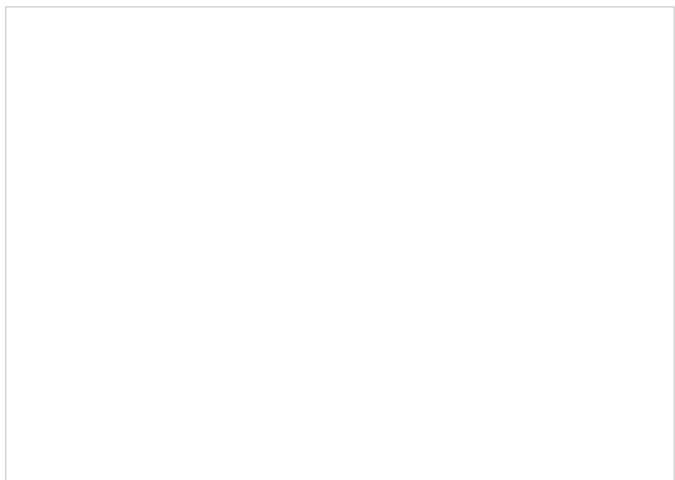




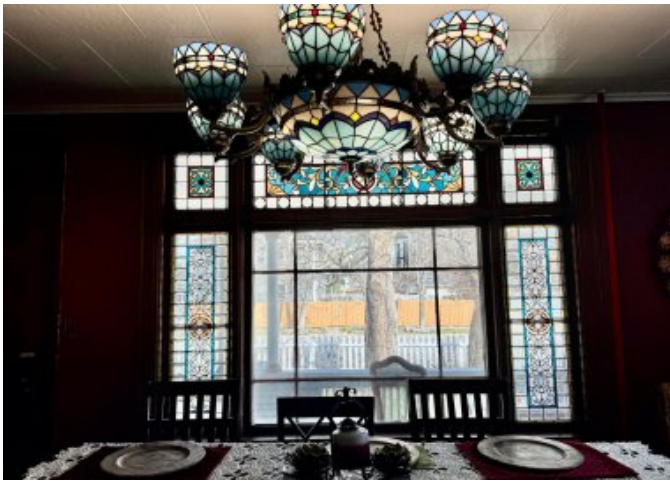




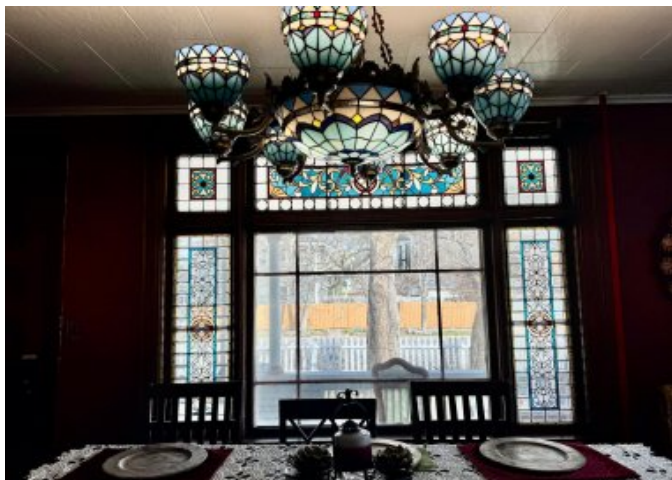




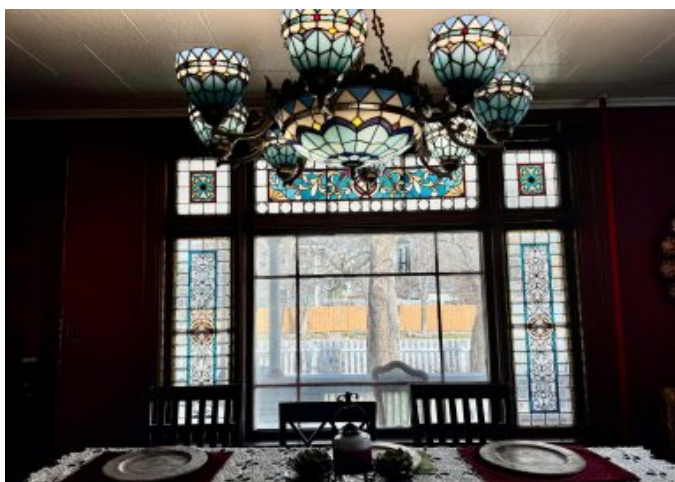




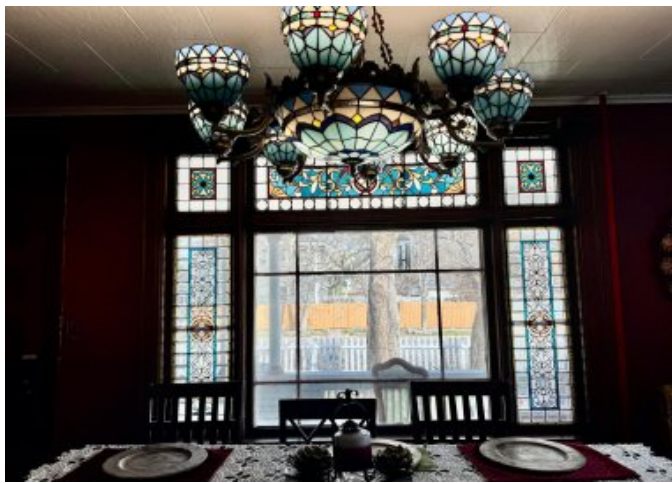




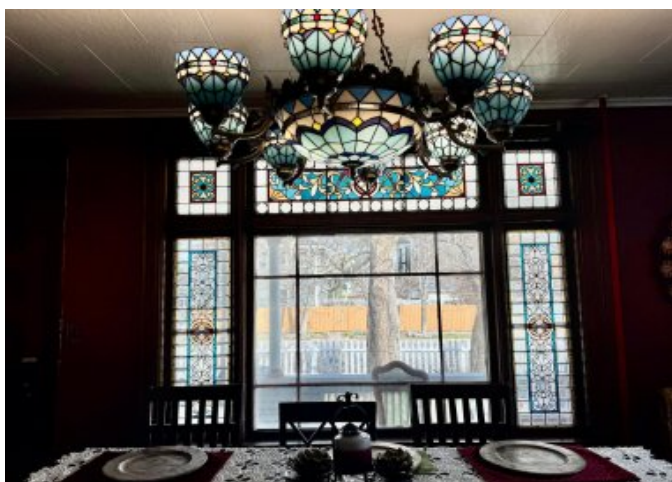
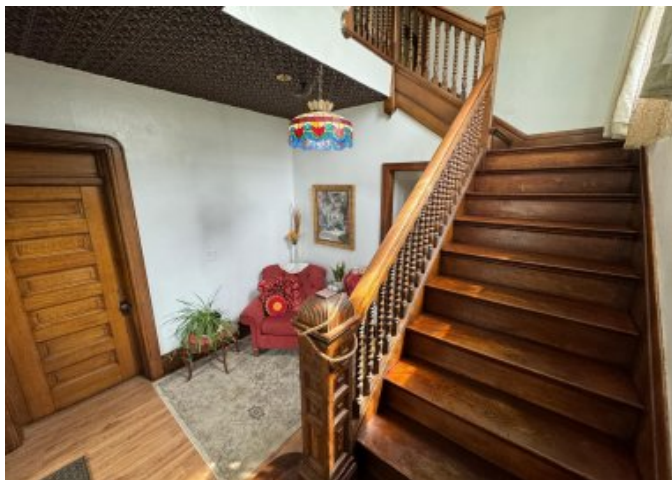




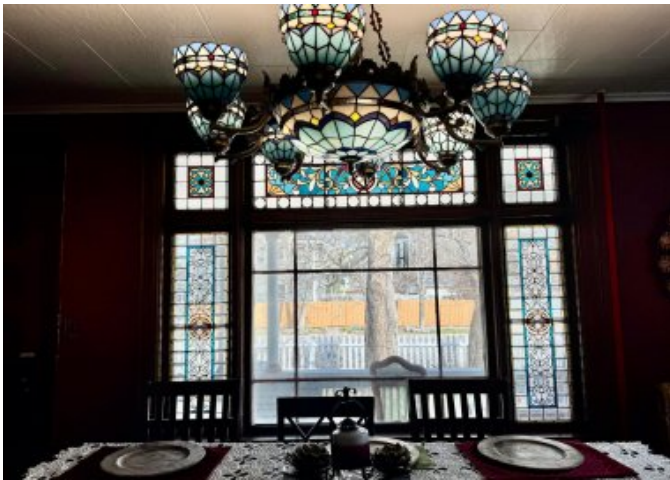




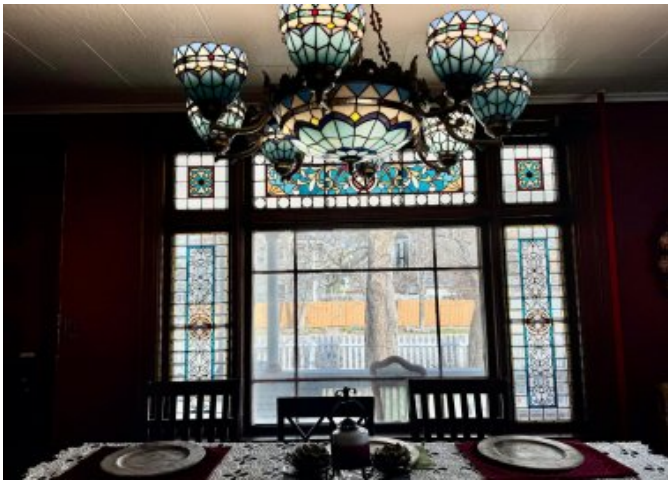




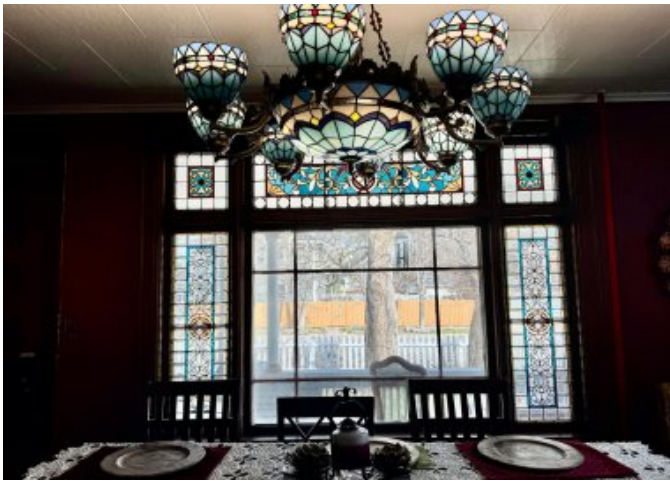




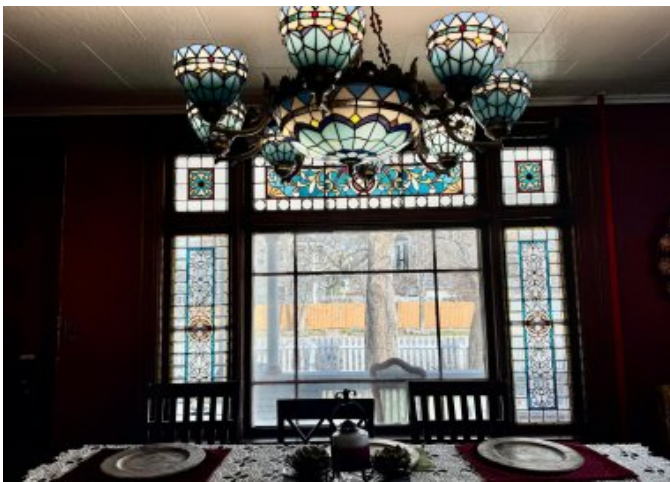




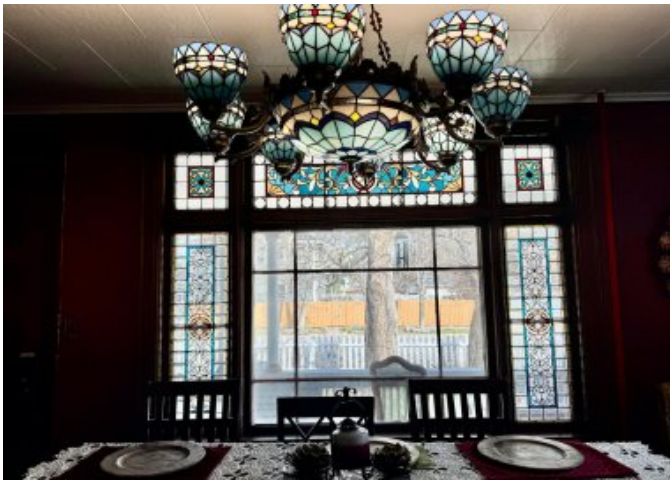




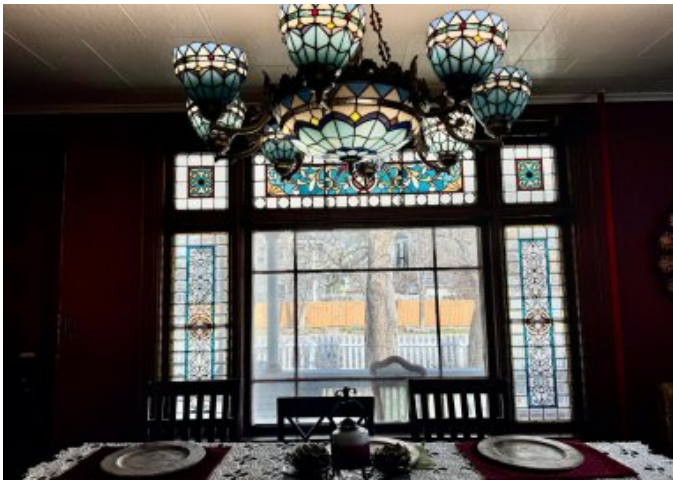




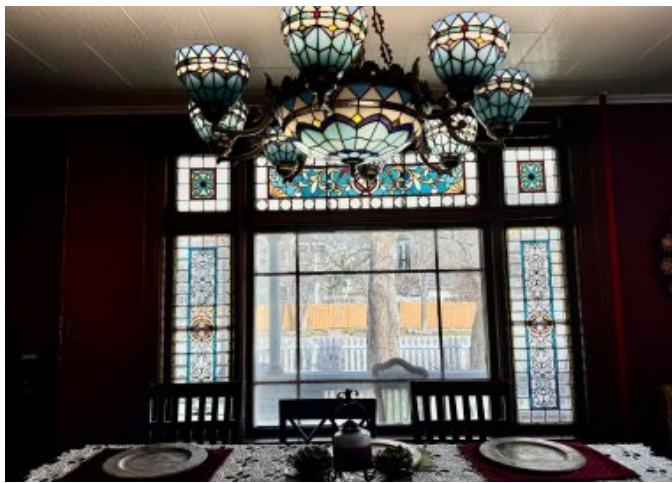




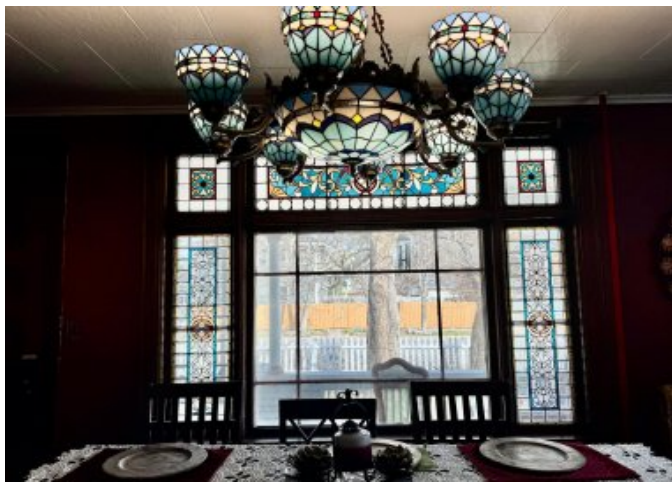




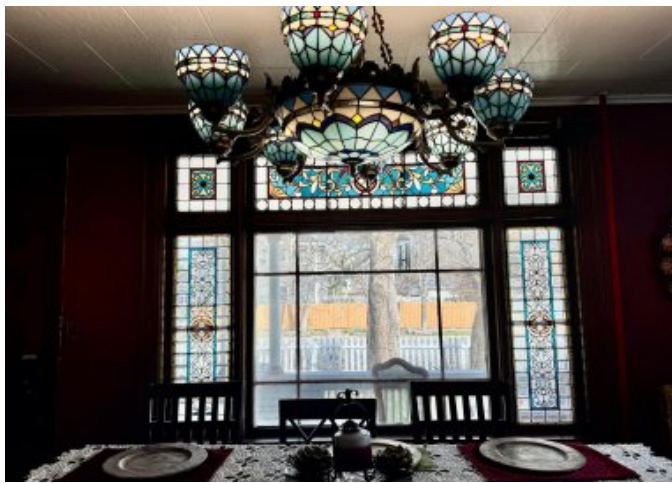




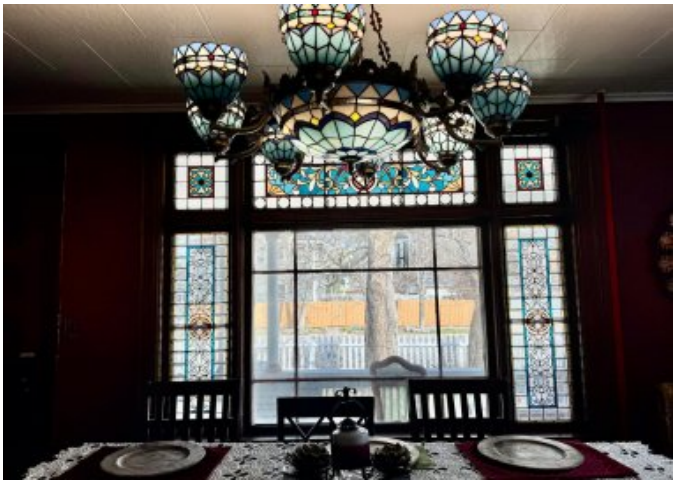






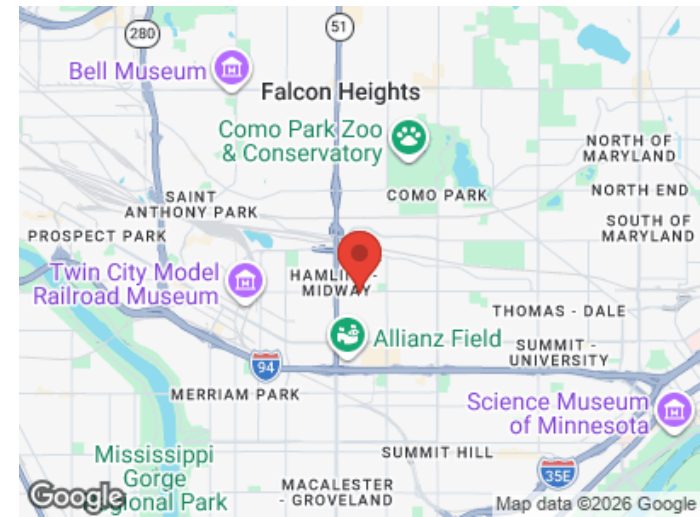
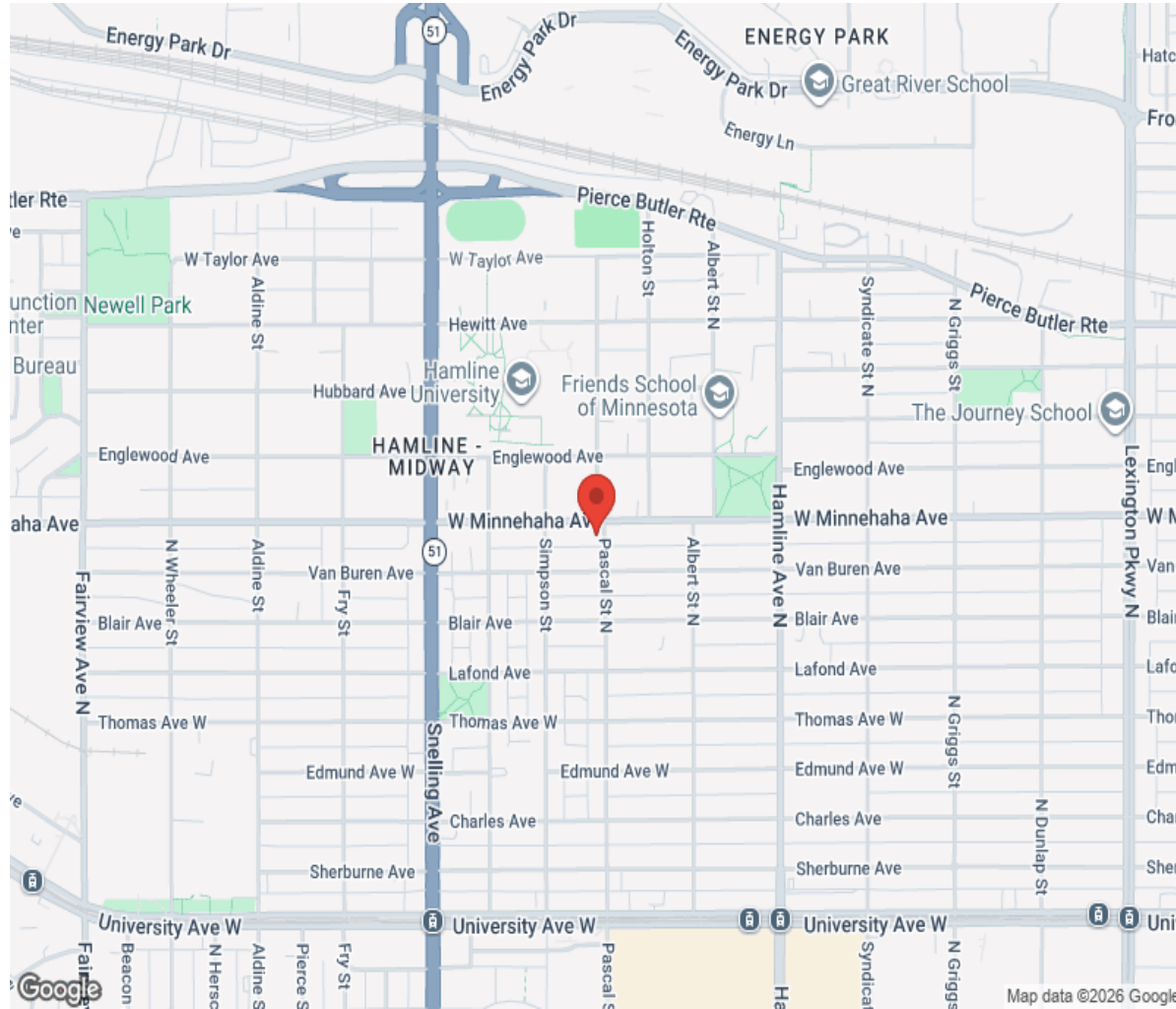








# Location



**Hamptons**

INTERNATIONAL

**+44 (0)20 8618 4551**

**international@hamptons.co.uk**

**www.hamptons-international.com**