

Hamptons

INTERNATIONAL



Wimbledon Place, The Broadway, London, SW19

2  2  1 

£840,000

(£840,000)

Property details



Key features

- Two-bedroom duplex apartment in
- Energy-efficient and built for modern living
- Rooftop gardens with far-reaching views
- Concierge and co-working space for residents
- Moments from Wimbledon Station - 10 minutes
- Surrounded by 2147 acres of green space
- 999-year leasehold with peppercorn rent

Attributes

- Apartment

Wimbledon Place, The Broadway, London, SW19

£840,000

(£840,000)

2 🏠 2 🚗 1 🚗

Description

Outstanding 2-bedroom duplex apartment with access to exceptional resident amenities, ideally located in the heart of Wimbledon. Contact us today to arrange a viewing and discover everything this impressive home has to offer. Wimbledon Place show home now available to view! Book an appointment with Hamptons! Live at the intersection of style, space, and connectivity in this impressive three-bedroom apartment at Wimbledon Place, a visionary development by Thornsett bringing 135 design-led homes to one of London's most sought-after neighbourhoods. Thoughtfully designed for growing families, upsizers, or those seeking generous living space in a well-connected London location, this three-bedroom residence offers expansive open-plan living and dining areas, ideal for entertaining, relaxing, or working from home. With a lift to all floors and energy efficiency at its core, this car-free development champions sustainable, future-forward living. Enjoy a seamless blend of indoor comfort and outdoor beauty, with access to a stunning communal rooftop terrace offering sweeping views across London. Whether it's unwinding after a busy day or making the most of remote working, the on-site co-working space and dedicated concierge service make everyday living effortless. With completion set for 2026, now is the perfect time to register your interest and secure your place in this dynamic new community at Wimbledon Place. Situation Perfectly positioned on The Broadway, Wimbledon Place places you at the heart of one of London's most desirable neighbourhoods. Renowned for its unique blend of urban sophistication and village charm, Wimbledon offers an exceptional quality of life, just moments from central London. From your doorstep, you'll find an eclectic mix of independent boutiques, delis, and popular restaurants, alongside everyday essentials and well-known high-street brands. A short walk takes you to Wimbledon Station, with quick links via National Rail, the District Line, and Tramlink, offering effortless access to the City, West End, and beyond. But it's not just about convenience. Wimbledon is a green haven, home to over 2,000 acres of surrounding parkland, including Wimbledon Common and Cannizaro Park, ideal for weekend strolls, dog walks, or outdoor workouts. The area is also famed for its sporting prestige, as the proud home of the All England Lawn Tennis Club, and offers top-tier education with 10 top universities within a 60 minutes. Whether you're a professional, a couple, or an investor, Wimbledon offers a lifestyle that's effortlessly connected, culturally rich, and endlessly appealing. Property Ref Number: HAM-64193 Additional Information Service Charge: £4.50 per sq. ft. per annum Ground Rent: Peppercorn Tenure: 999 year leasehold with a share of freehold The photos shown are of the show home





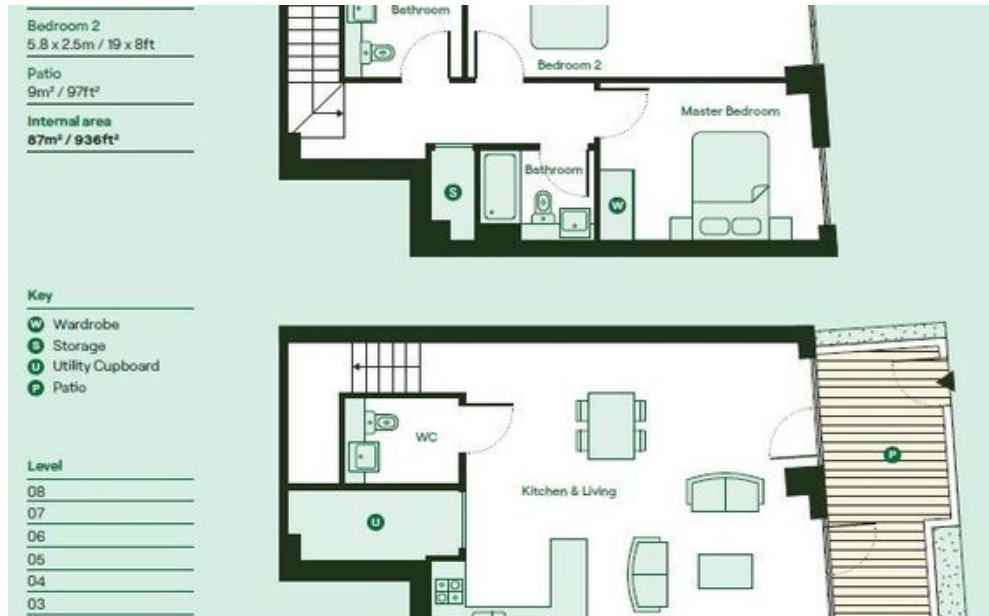




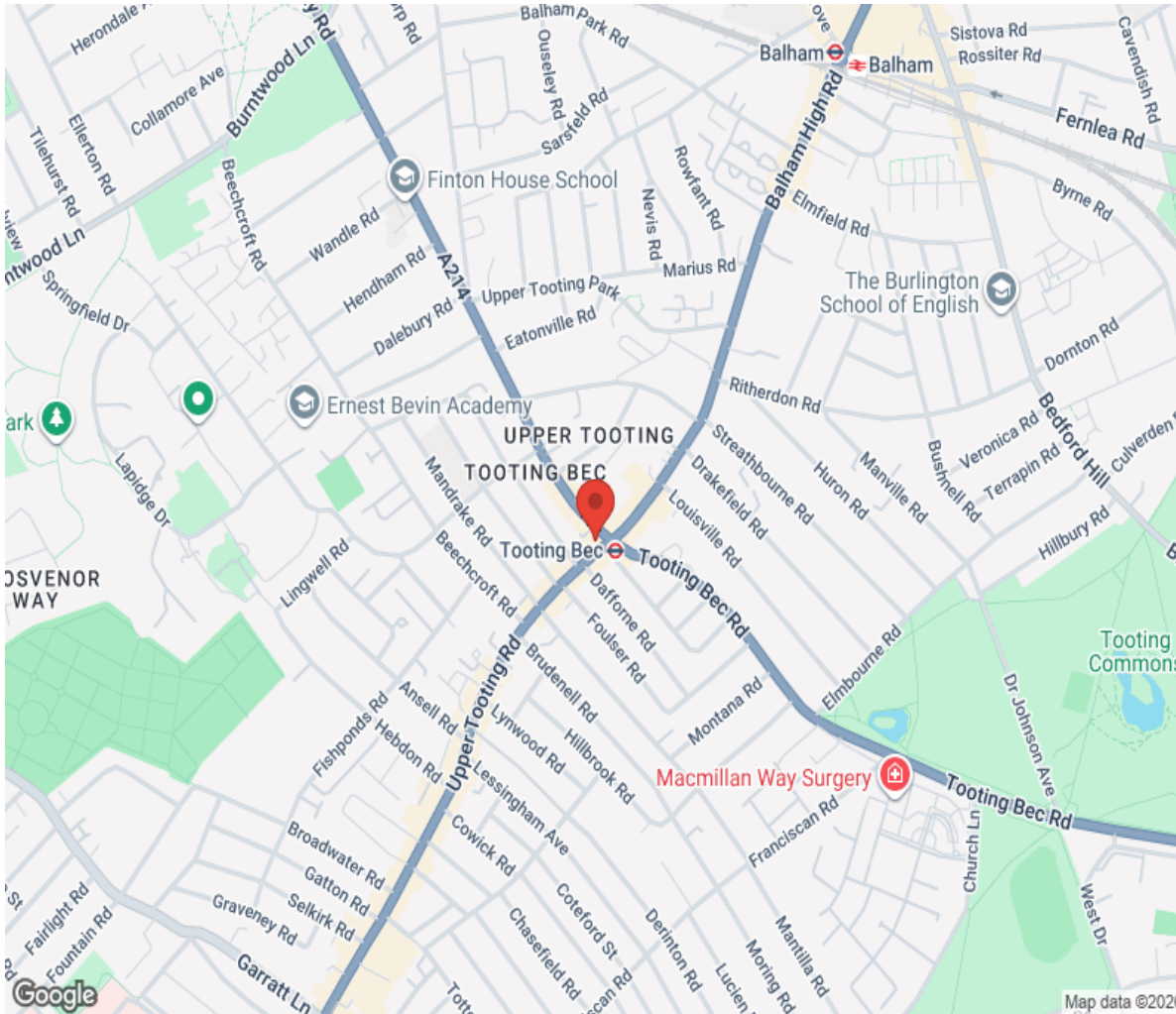




Floor plan



Location



Hamptons

INTERNATIONAL

+44 (0)20 8618 4551

international@hamptons.co.uk

www.hamptons-international.com