

Hamptons

INTERNATIONAL



©2026 NFI-MLS, Inc

578 Courtney Chase Dr, St Augustine, FL 32092

3 3

£510,000

(\$675,000)

Property details



Key features

- **Garage Count: 3 Car Garage**

Attributes

 **Garage**

578 Courtney Chase Dr, St Augustine, FL 32092

£510,000
(\$675,000)

3  3 

Description

Better than new and ready to move right in! Courtney Chase at Silverleaf home built by ICI, known for their custom luxury finishes. Located on a premier 60 foot corner lot, this Serena floor plan is a versatile, thoughtfully designed home that perfectly balances luxury, functionality and comfort across a single, expansive level. A 3-car tandem garage provides extra storage, or you can create your own little workshop. The 12 foot ceilings create a grand entry and highlight the light and bright atmosphere. You will love the stunning open-concept kitchen, living room (with 13 foot tray ceiling) and dining area making a warm, inviting space to gather with family and friends. The kitchen is a chef's delight, boasting the "Deluxe Kitchen" upgrade, complete with a spacious center island that doubles as a breakfast bar, ample cabinetry and new appliances. This is where meal prep transforms into an experience, with room for everyone to gather, whether it's a weekend brunch or a holiday feast. Added features included smooth walls, hardwood floors, and a gas stub on the lanai for future outdoor kitchen or gas grill connection. Bring the outdoors in by opening up the sliding doors that lead out to the screened lanai, this is sure to be a favorite spot for al fresco dining, relaxing and entertaining. A large ensuite will beacon you to relax at the end of the day and provide a spa like atmosphere to prepare for your day. Additional improvements made by sellers include gutters, water softener treatment system, refrigerator, washer and dryer, new curtains and rods, plus a laundry tub and cabinet. Habitech security system that can be used whether monitored or not. Access to the resort style amenities at both the main Silverleaf community and walking distance to the BRAND NEW Johns Island subdivisions amenities; including multiple pools, pickleball courts, playground, walking paths and more. Located just minutes from historic downtown St. Augustine, pristine beaches, shopping, dining, and top-rated schools, this home offers the perfect balance of everyday convenience and show-stopping entertaining space. Schedule your private showing today!









© 2016 NEFMLS, Inc





36 NEFMLS, Inc









36 NEFMLS, Inc













© 2016 NEFMLS, Inc





© 2016 NEFMLS, Inc













© 2016 NEFMLS, Inc







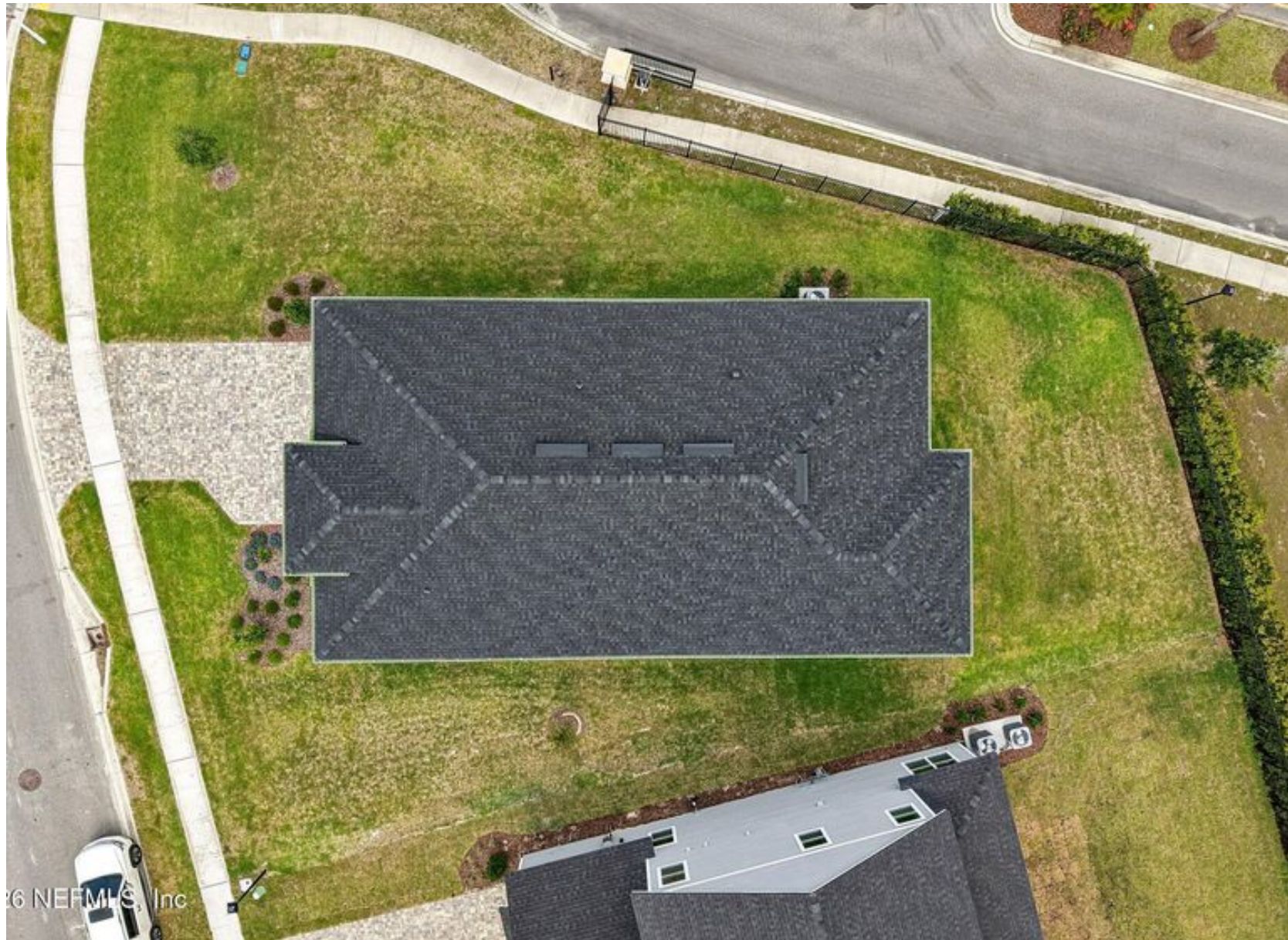


© 2016 NEFMLS, Inc





















© 2016 NEFMLS, Inc





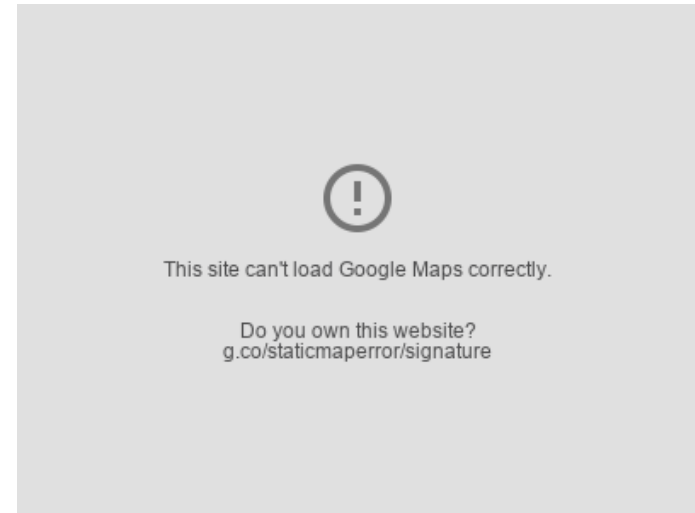
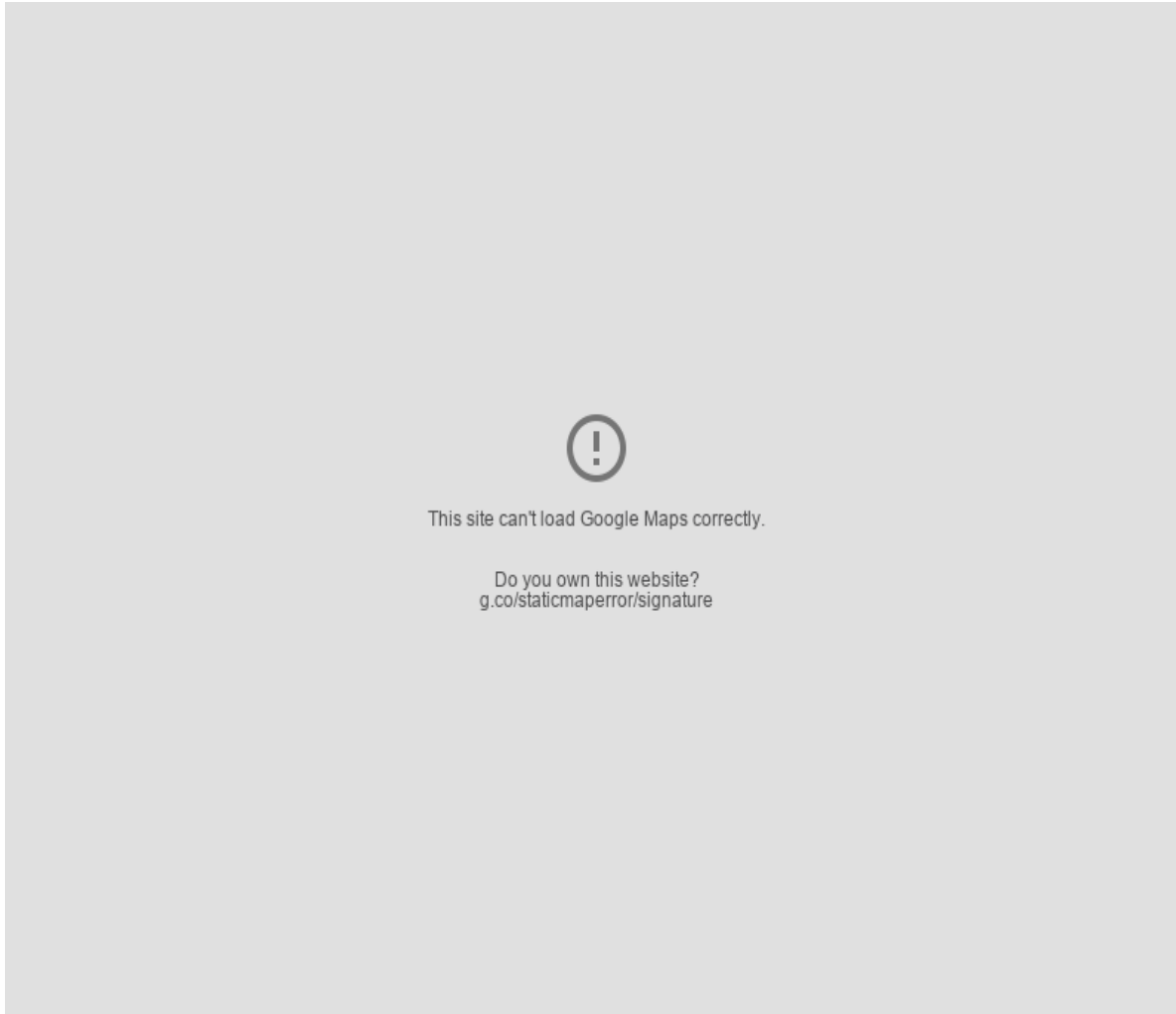








Location



Hamptons

INTERNATIONAL

+44 (0)20 8618 4551

international@hamptons.co.uk

www.hamptons-international.com