

# Hamptons

INTERNATIONAL



DMLS



**4300 Edgehill Ct, Raleigh, NC 27612**

6 🏠 4 🚗

**£540,000**

**(\$725,000)**

## Property details



### Key features

- **Age: Over 50 Years Old**
- **Sewer: Public**
- **Fireplace Count: 2 Fireplaces**
- **Basement: Finished**
- **Flooring: Tile**
- **Flooring: Hardwood**
- **Fencing: Fenced Yard**
- **Exterior Description: Brick**
- **Fireplace Description: Wood Burnin**
- **Location: Cul-de-sac**

### Attributes

- **Apartment**

**4300 Edgehill Ct, Raleigh, NC 27612**

**£540,000**  
**(\$725,000)**

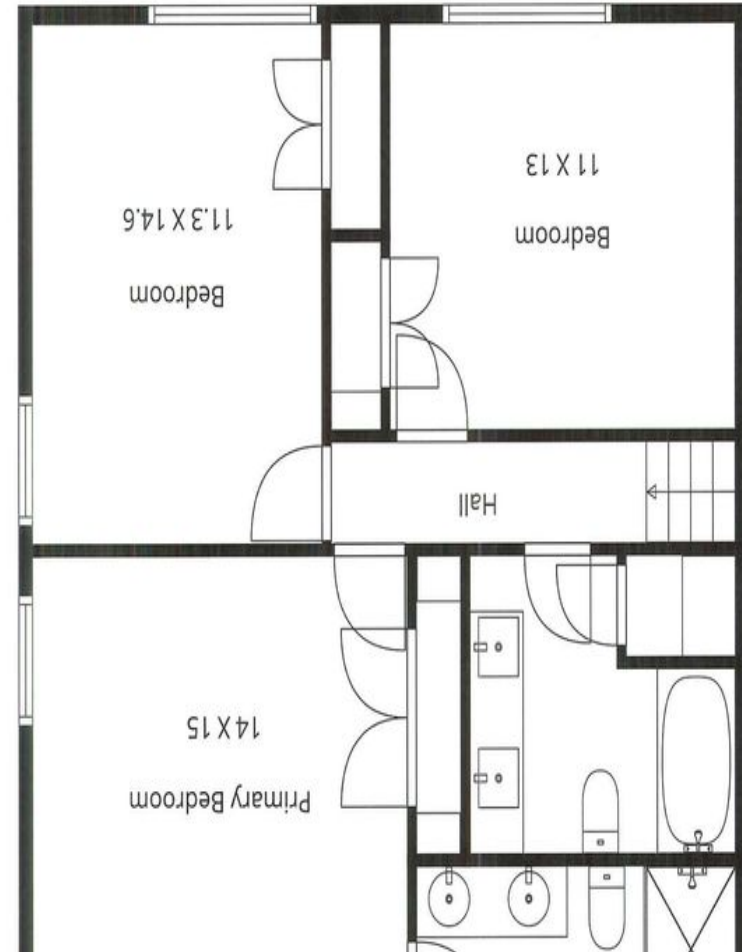
6 🏠 4 🚗

## Description

Welcome to 4300 Edgehill Court--an exceptional multigenerational home in the heart of Raleigh offering space, flexibility, and an unbeatable location. Just a short walk to Crabtree Valley Mall, minutes from Downtown Raleigh, and surrounded by abundant shopping and dining, this address delivers convenience at every turn. Tucked away on a quiet cul-de-sac, this 6-bedroom, 4-bathroom home offers a rare dual-access layout with an additional driveway and private entry from North Hills Drive--enhancing both privacy and functionality. Inside, you're welcomed by gleaming hardwood floors and an inviting, thoughtfully designed floor plan featuring multiple living areas ideal for entertaining or everyday living. Skylights throughout the home flood the space with natural light, creating a bright and airy atmosphere. Upstairs, you'll find a spacious secondary bedroom and a luxurious primary suite complete with a fully remodeled bath featuring a zero-entry tiled shower for a modern, spa-like feel. The lower level expands the living space even further, offering a large recreation area, oversized additional bedrooms, and direct access to the expansive patio and private backyard--perfect for relaxing with your morning coffee or hosting gatherings. One of the home's most impressive features is the fully attached in-law suite/apartment with its own private entrance. Complete with a full kitchen, remodeled bath, and private bedroom, this space is ideal for multigenerational living, accommodating guests, or generating rental income for the savvy investor. 4300 Edgehill Court is the perfect blend of versatility, location, and opportunity--designed to grow with you while offering comfort and style at every level.



31 W/15

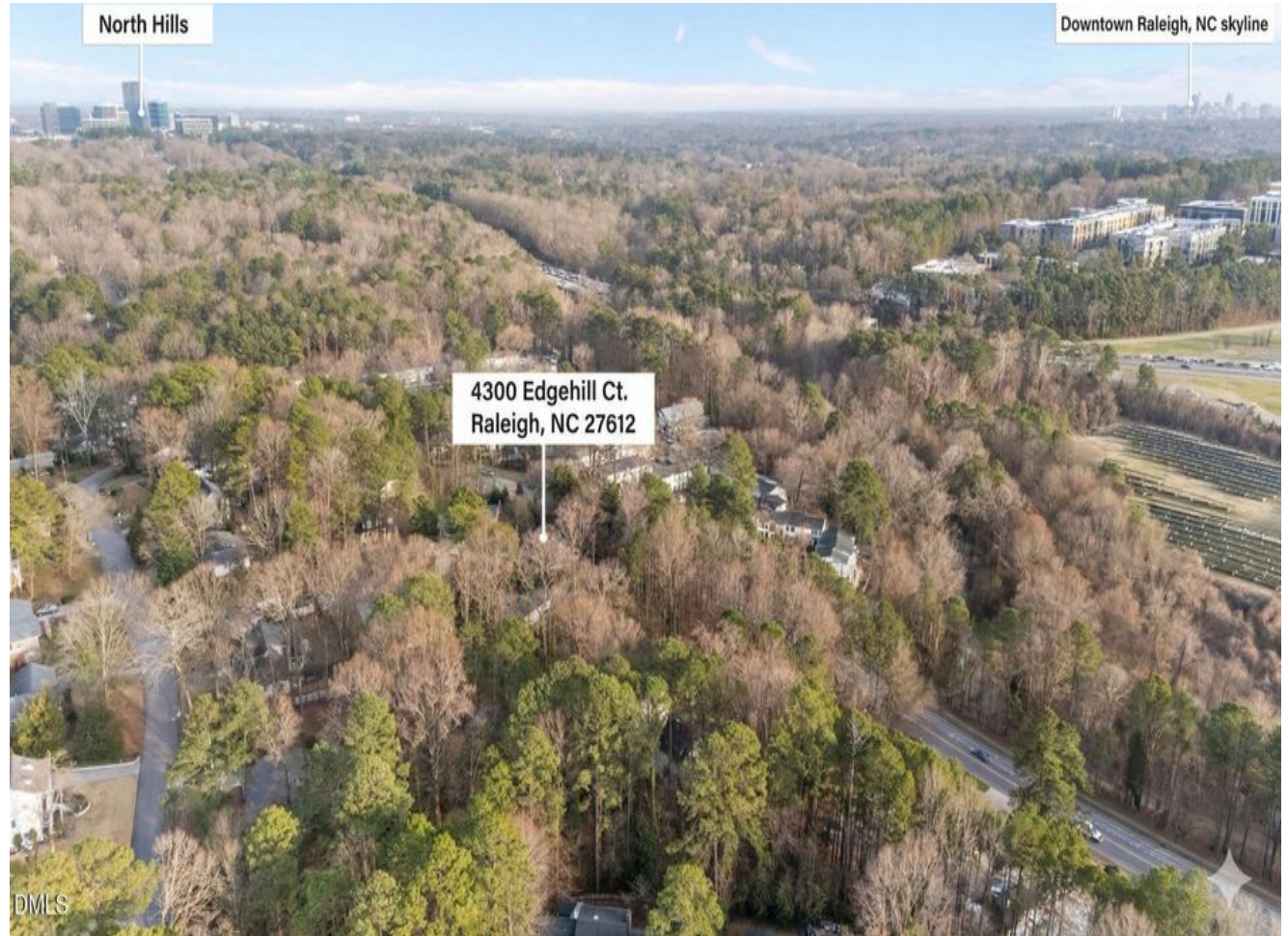




S



DMLS













S









S









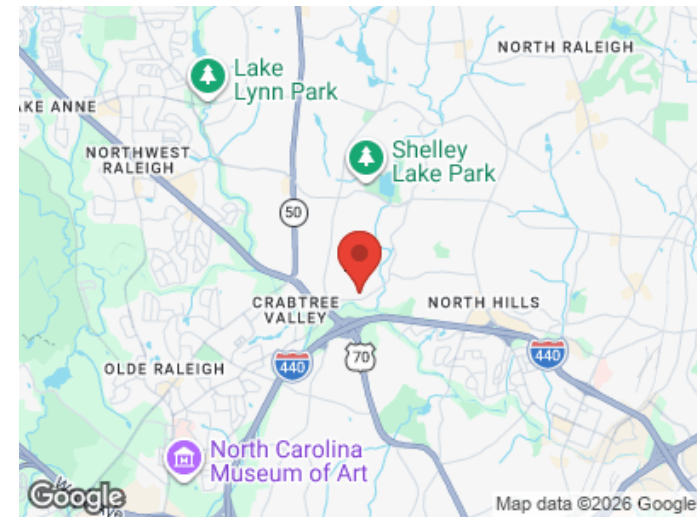
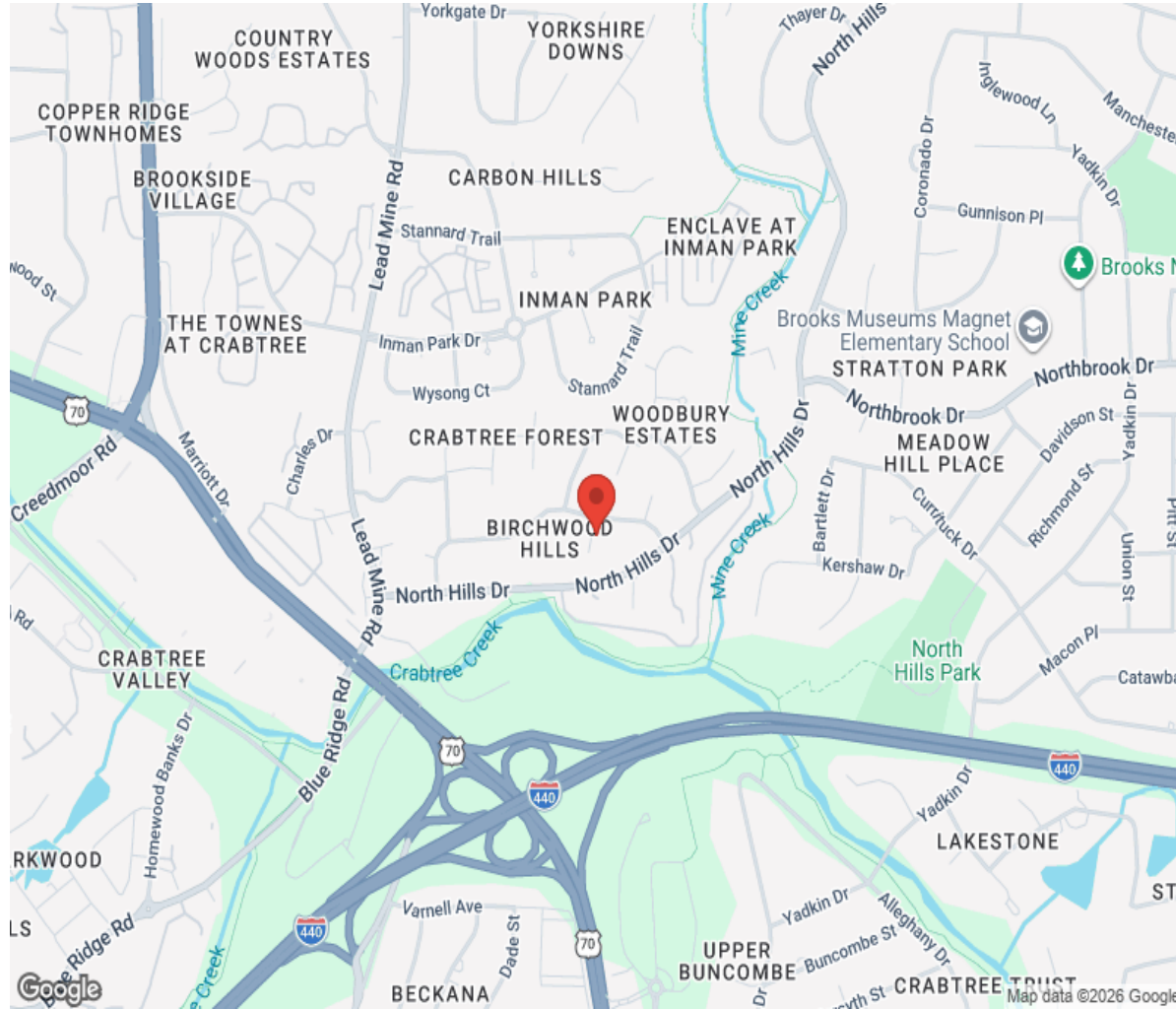
S





S

# Location



# Hamptons

INTERNATIONAL

**+44 (0)20 8618 4551**

**[international@hamptons.co.uk](mailto:international@hamptons.co.uk)**

**[www.hamptons-international.com](http://www.hamptons-international.com)**